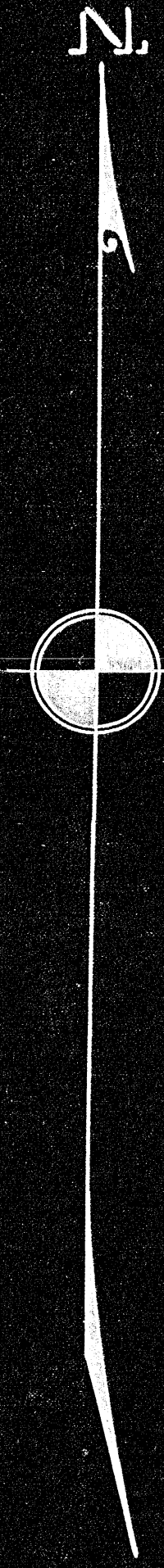


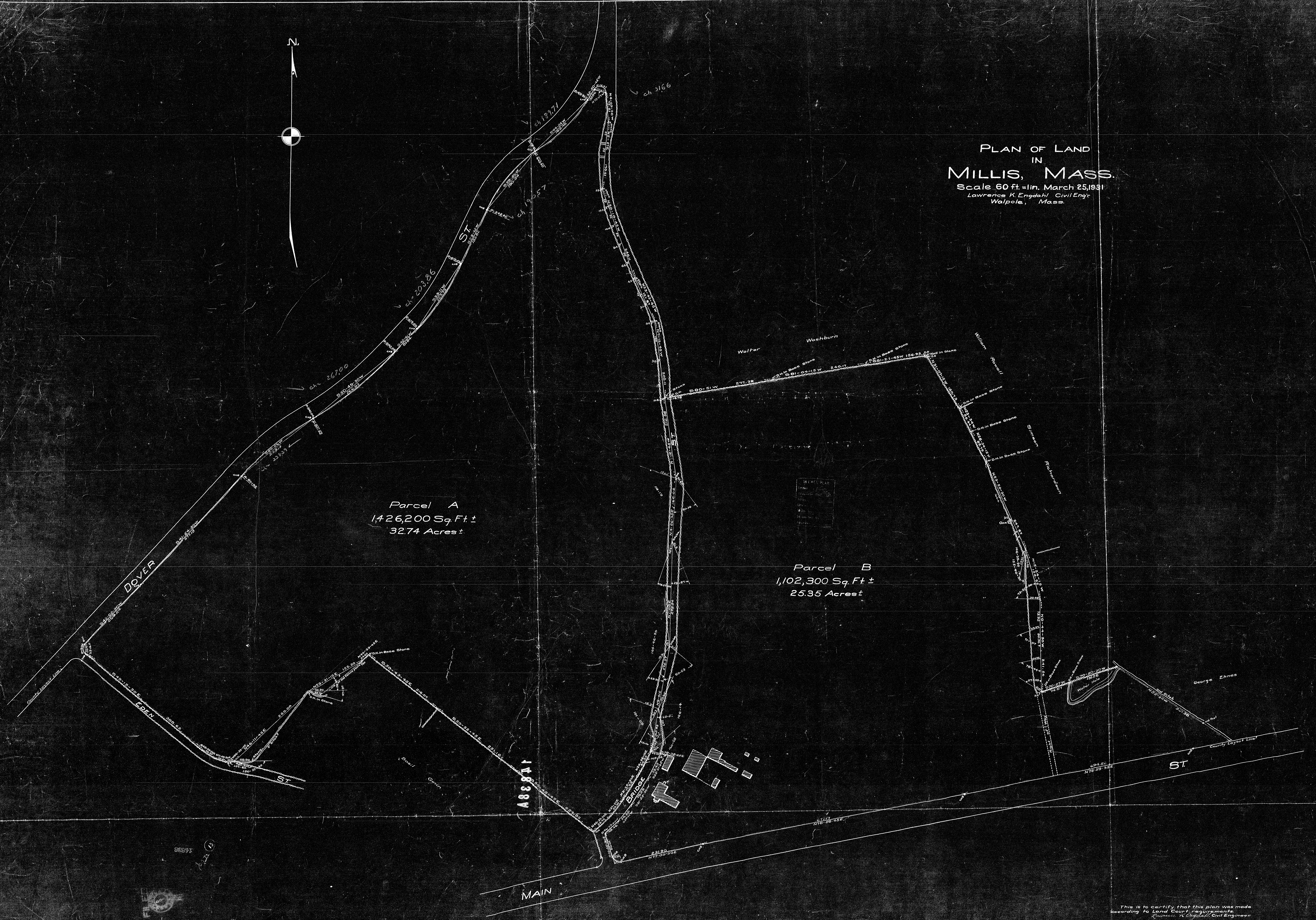
17881



PLAN OF LAND  
IN  
**MILLIS, MASS.**  
Scale 60 ft = 1 in. March 25, 1931  
Lawrence K. Engdahl, Civil Engr.  
Walpole, Mass.

Parcel A  
1,426,200 Sq. Ft. ±  
32.74 Acres ±

Parcel B  
1,102,300 Sq. Ft. ±  
25.35 Acres ±



This is to certify that this plan was made according to Land Court requirements.  
Lawrence K. Engdahl, Civil Engineer