

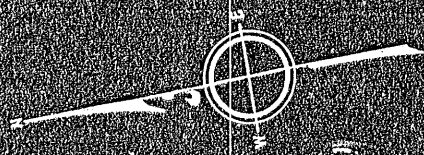
PLAN OF LAND IN CANTON
Scale 100 feet to an inch
MARCH 1924.

Robert B. Bellamy,
Civil Engineer

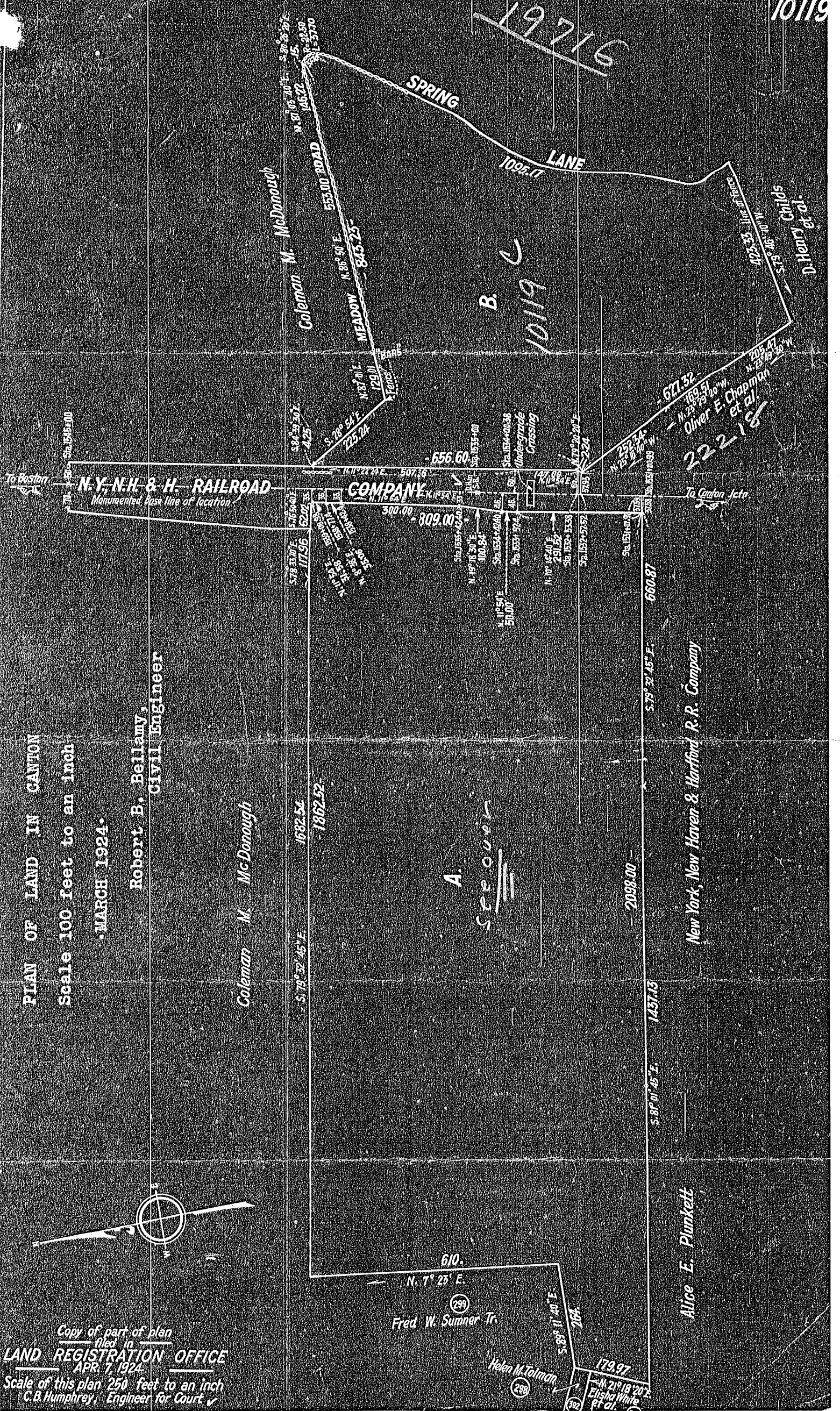
Coleman M. McDonough

New York, New Haven & Hartford R.R. Company

Alice E. Plunkett



Copy of part of plan
filed in
LAND REGISTRATION OFFICE
APR. 7, 1924.
Scale of this plan 250 feet to an inch
C.B. Humphrey, Engineer for Court



B. 10119

A. Spoon

222-18
Oliver E. Chapman et al.

D. Henry et al.

Fred W. Sumner Tr.

Helen M. Tolman

Elisha White et al.