

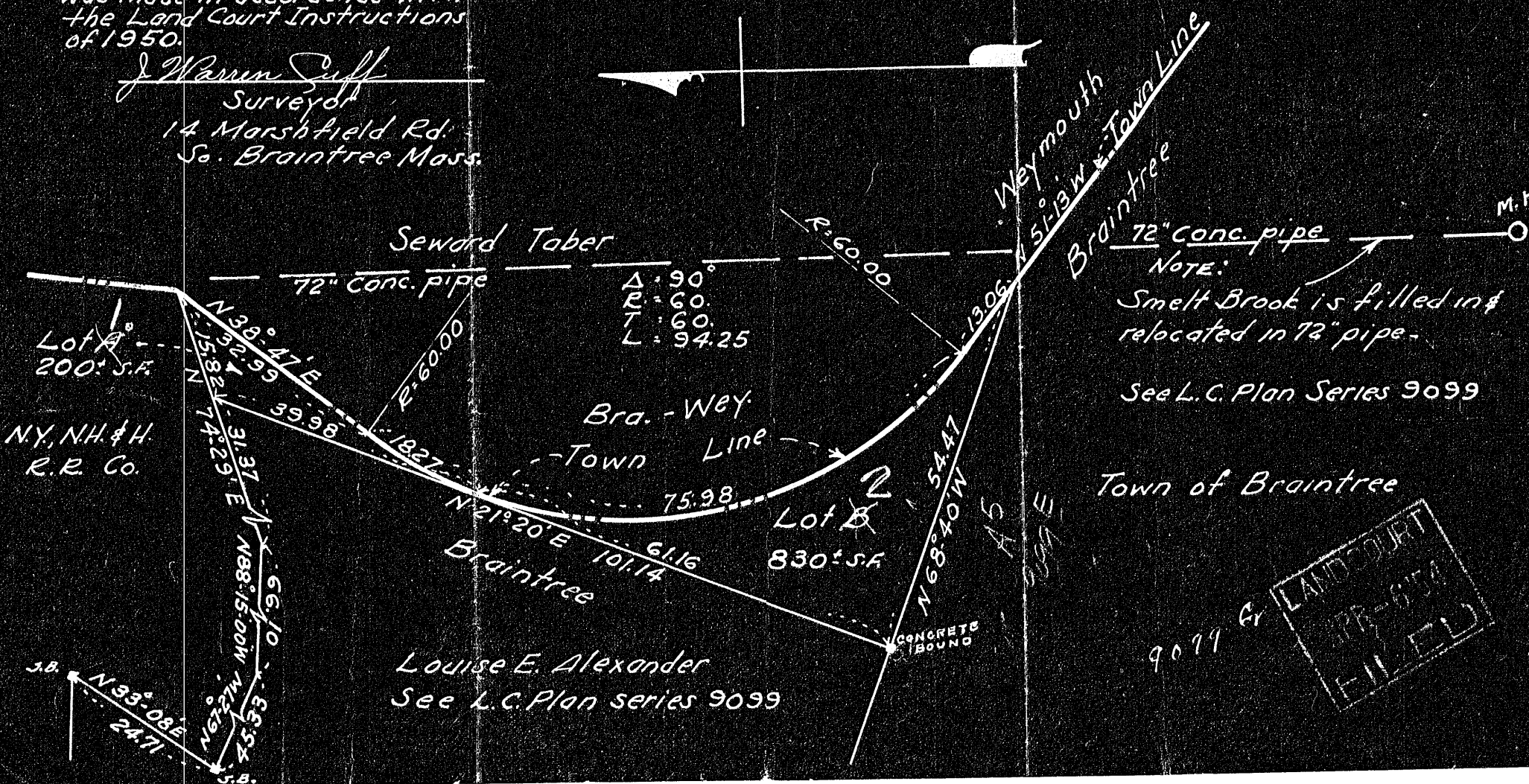
PLAN OF LAND  
 IN  
 BRAintree, MASS.  
 OWNER: LOUISE E. ALEXANDER  
 SCALE 1"=20' DEC. 1953  
 J.W. CUFF - SURVEYOR  
 BRAintree, MASS.

Subdivision of part of Lot A  
 Shown on plan 9099A  
 with cert. 6354

APPROVAL UNDER THE  
 SUBDIVISION CONTROL LAW  
 NOT REQUIRED. Dec 28 1953  
 Joseph M. Maguire  
 Edward J. [unclear]  
 William J. [unclear]  
 Mark [unclear]  
 Joseph W. [unclear]  
 PLANNING BOARD TOWN OF BRAintree

I certify that this plan & survey  
 was made in accordance with  
 the Land Court Instructions  
 of 1950.

J. Warren Cuff  
 Surveyor  
 14 Marshfield Rd.  
 So. Braintree Mass.



Louise E. Alexander  
 See L.C. Plan series 9099

LAND COURT  
 FILED

A true copy of plan filed  
with Norfolk Registry District  
of the Land Court  
Attest:

Asst. Recorder

9099 E

Subdivision of part of Lot A shown on plan 9909A

Filed with Cert. of Title No. 6354 Registry District of Norfolk  
County

LAND IN BRAINTREE

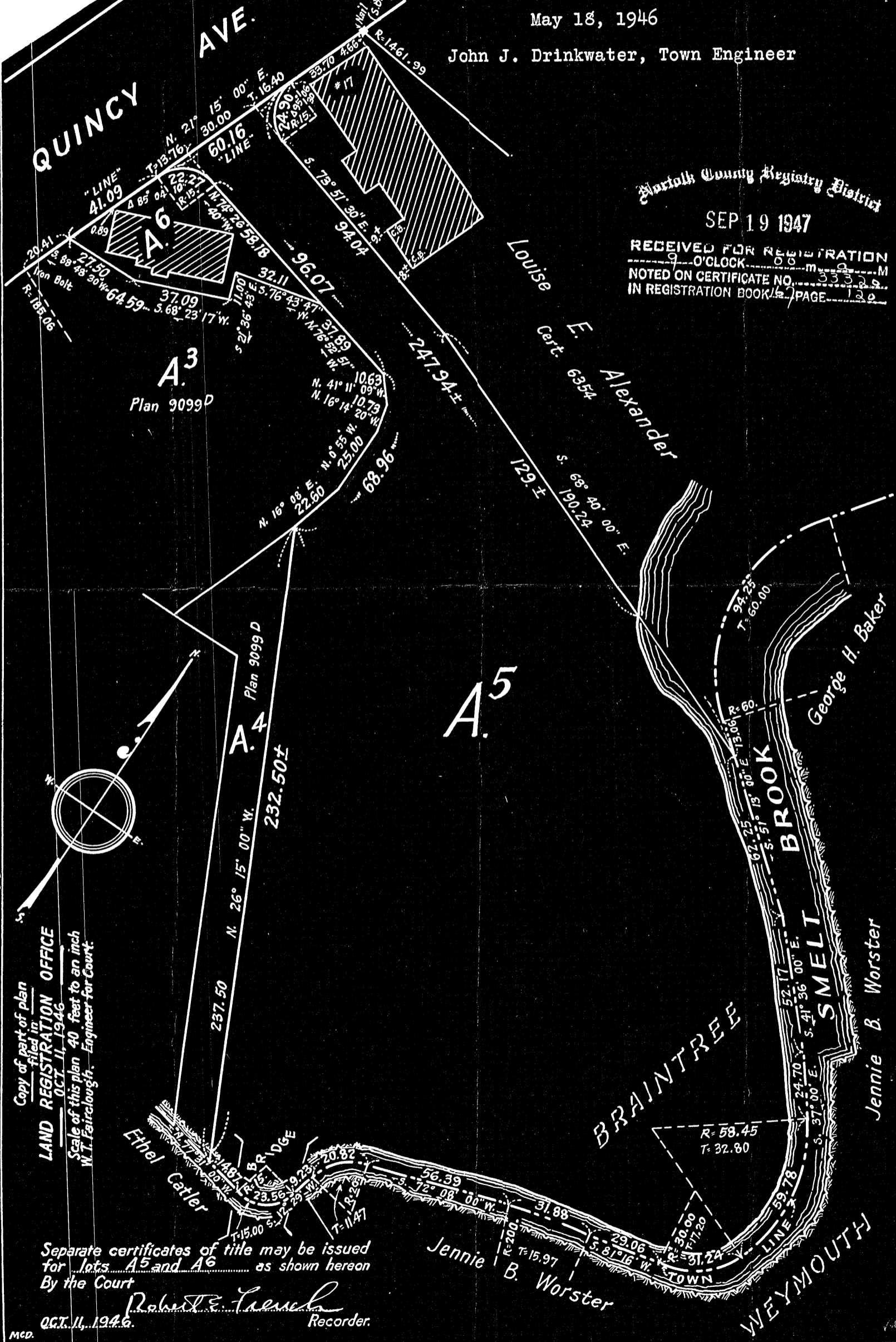
May 18, 1946

John J. Drinkwater, Town Engineer

Norfolk County Registry District

SEP 19 1947

RECEIVED FOR REGISTRATION  
9 O'CLOCK 05 m  
NOTED ON CERTIFICATE NO. 35329  
IN REGISTRATION BOOK PAGE 129



Louise E. Alexander, Owner. Certificate 6354

Copy of part of plan  
filed in  
**LAND REGISTRATION OFFICE**  
OCT. 11, 1946  
Scale of this plan 40 feet to an inch  
W. T. Fairclough, Engineer for Court.

Separate certificates of title may be issued  
for lots A5 and A6 as shown hereon  
By the Court

*Robert E. French*  
Recorder.  
OCT. 11, 1946.

med.