

PLAN OF LAND IN BROOKLINE

Charles O. Baird, Jr., Surveyor

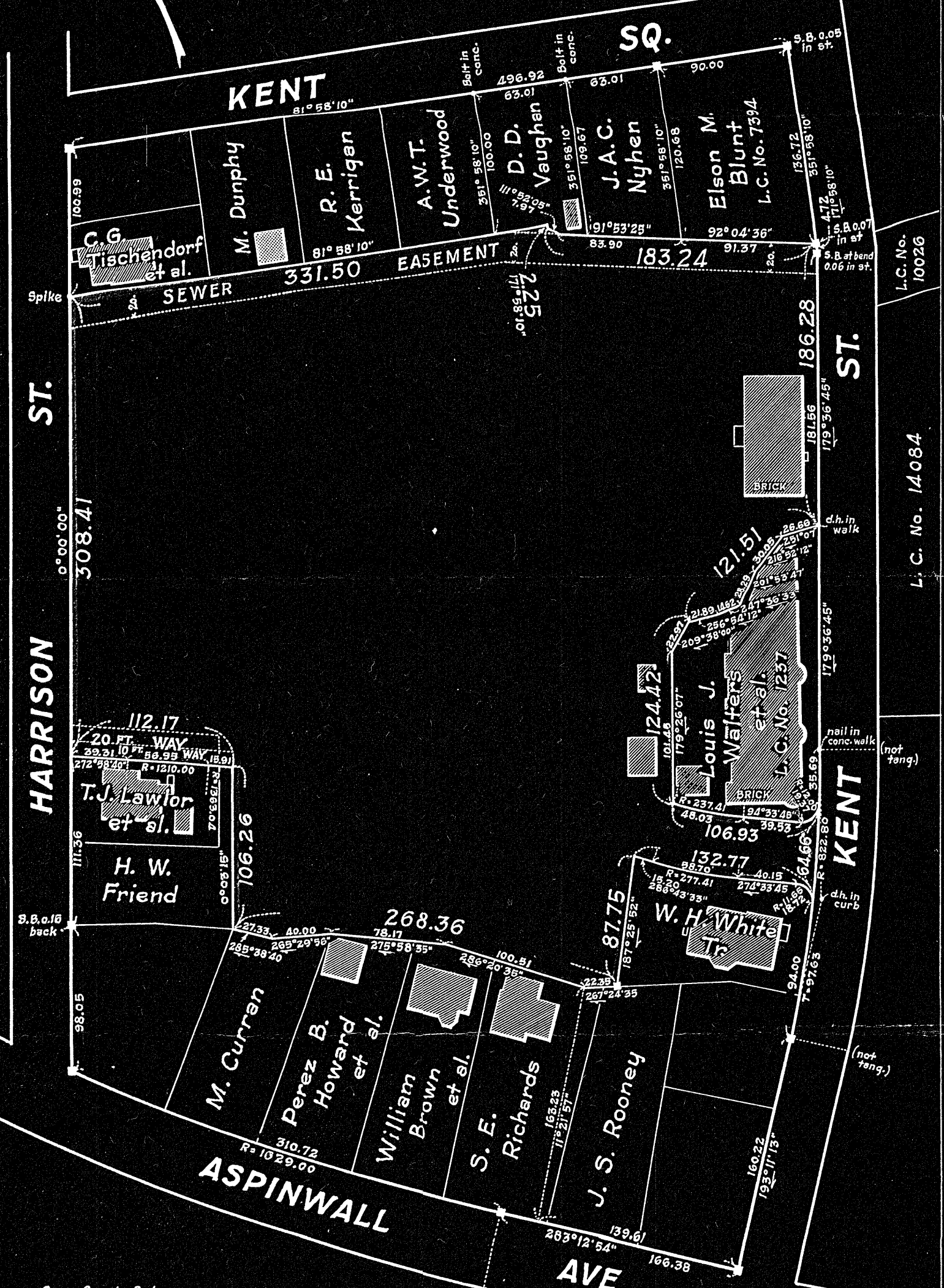
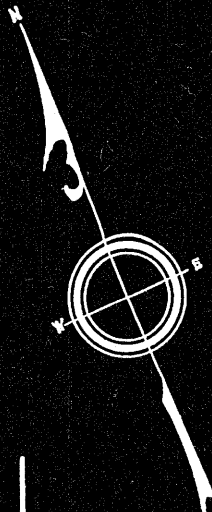
DECEMBER 12, 1932

15425 A

North County Registry District

JUN 21 1934

RECEIVED FOR REGISTRATION  
9 O'CLOCK 48 m 7 M  
NOTED ON CERTIFICATE NO. 18146  
IN REGISTRATION BOOK 91 PAGE 146



HARRISON ST.

KENT SQ.

KENT ST.

ASPINWALL AVE.

Copy of part of plan  
filed in  
LAND REGISTRATION OFFICE  
JUNE 15, 1933  
Scale of this plan 80 feet to an inch  
C.B. Humphrey, Engineer for Court

NOTE:  
All lines oriented by azimuths.

L.C. No. 10026  
L.C. No. 14084

Subdivision of Lots A - E incl. Shown on Plan 1237<sup>A</sup>

1237<sup>B</sup>

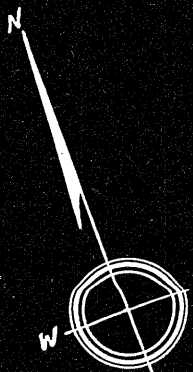
Filed with Cert. of Title No. 227 Registry District of Norfolk County

LAND IN BROOKLINE

Dec. 14, 1946

Joseph Selwyn, Civil Engineer

S.B. 0.06  
in St.



Norfolk County Registry District

APR 22 1948

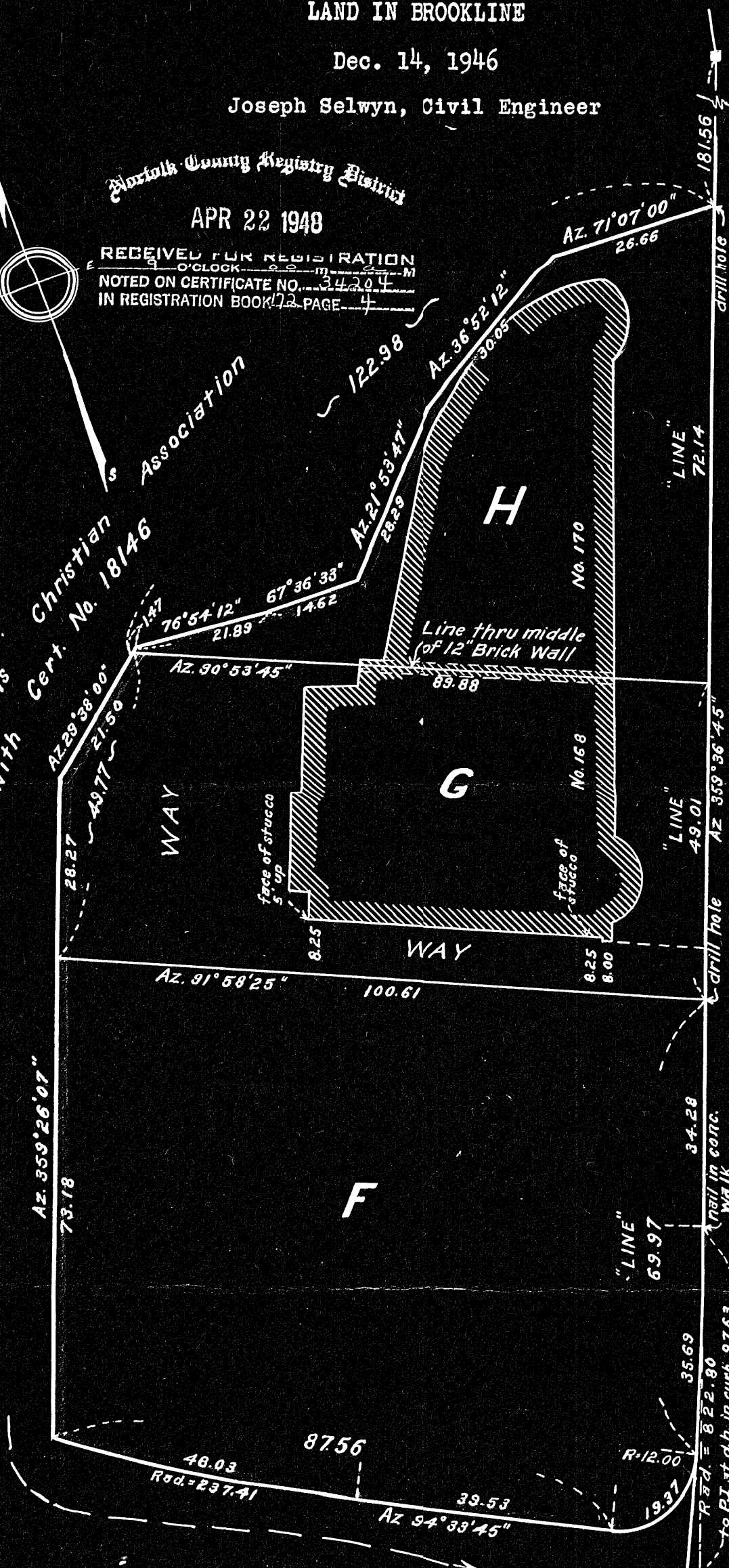
RECEIVED FOR REGISTRATION  
O'CLOCK  
NOTED ON CERTIFICATE NO. 34204  
IN REGISTRATION BOOK PAGE 4

Christian Association  
Cert. No. 18146

Boston Young Men's  
Filed with Cert. No. 18146

Northeastern University of the  
L.C. Plan No. 15425A

John M. Shadrawy - Owner - Cert. No. 32258



KENT STREET

KENT STREET

Separate certificates of title may be issued  
for Lots F, G, and H as shown hereon  
By the Court

Robert E. French  
Recorder.

DEC. 13, 1946.

Copy of part of plan  
filed in  
LAND REGISTRATION OFFICE  
DEC. 13, 1946  
Scale of this plan 20 feet to an inch  
W.T. Fairclough Engineer for Court