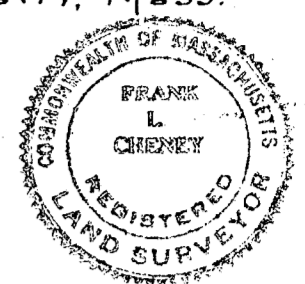


454+77.46
R.R. Mon.
dh. S.B.

Plan of Land in WALPOLE, MASS.

Scale: 1 in. = 50 ft. Cheney Engineering Co.
Needham, Mass.

May 14, 1964.



Subdivision of part of
Land Court Plan 154
filed with Cert. No. 5, Book 1,
Norfolk Registry District

I certify that this actual
survey was made on the ground
in accordance with the Land
Court instructions of 1959.

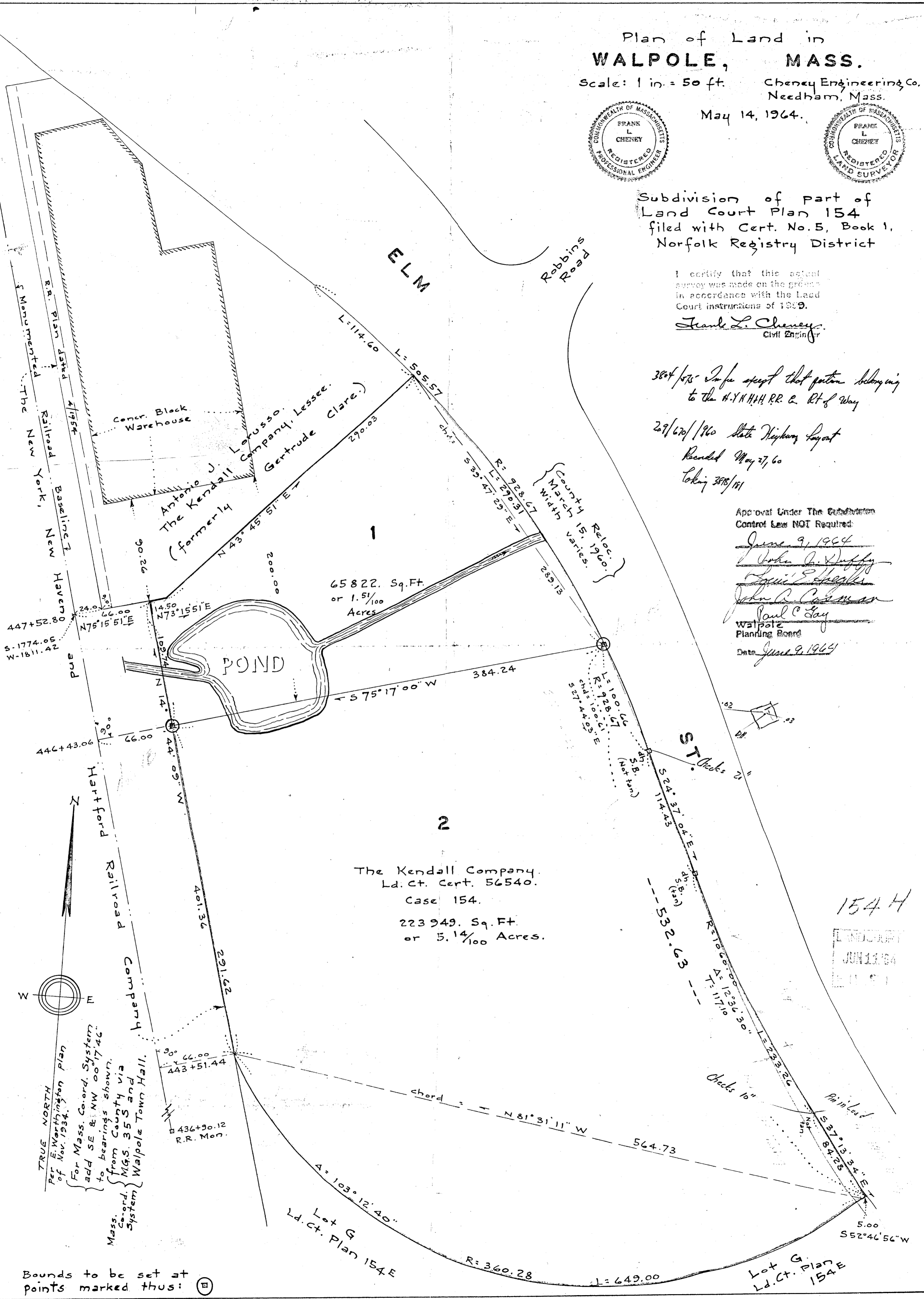
Frank L. Cheney
Civil Engineer

*384/151 In fee except that portion belonging
to the N.Y.N.H.H.R.R. & Rt. of Way*

*29/620/1960 State Highway Layout
Recorded May 27, 60
Taking 3078/151*

Approval Under The Subdivision
Control Law NOT Required

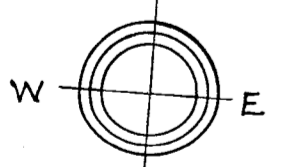
June 9, 1964
John A. Duffy
John A. Casman
Paul C. Day
Walpole
Planning Board
Date *June 9, 1964*



65 822. Sq. Ft.
or 1.51/100
Acres

The Kendall Company.
Ld. Ct. Cert. 56540.
Case 154.
223 949. Sq. Ft.
or 5.14/100 Acres.

154 H
LAND COURT
JUN 11 1964
154 H



Per E. Worthington Plan
of Nov. 1934.
For Mass. Co-ord. System
add SE & NW 00°17'46"
to bearings shown.
from County via
M.G.S. and
Co-ord. System
Walpole Town Hall.

Bounds to be set at
points marked thus: