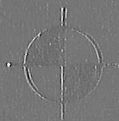


677



MTS

WE SUPPLY SOLUTIONS.

Main technical source

FIELD BOOK

#894



WE SUPPLY SOLUTIONS. **Maine Technical Source**

494 U.S. Route One, Yarmouth, ME 04096
207-846-5143 • 800-322-5003 • 207-846-3674 FAX
AND

110 Winn Street, Woburn, MA 01801
781-932-8888 • 800-332-1599 • 781-932-0450 FAX
AND

2634 James Street, Syracuse, NY 13206
315-414-0306 • 888-475-2479 • 315-414-0310 FAX



*Expert Instrument
Repairs and
Adjustments*

Name

Address

Phone

F.B. 677

COUNTY OF NORFOLK
ENGINEERING DEPT.
649 HIGH STREET
DEDHAM, MA 02026

1-781-461-6128

This book is published on a fine 50% cotton-content ledger paper, specially treated for maximum archival service, and protected by a water resistant surface sizing.

DT-0659

Surveying

AGL
SOKKIA
NIKON
DAVID WHITE
SCHONSTEDT
LUFKIN
SUBSURFACE
LEICA

Drafting

AERVOE
PRESCO
SPRAYON
MOTOROLA
SUUNTO
SECO
CHICAGO STEEL TAPE
CRAIN

CHARTPAK
ALVIN
SAFCO
STAEDTLER
MAYLINE
ROTOLITE
ROLATAPE

Computer Products

HEWLETT-PACKARD
AUTOCAD
LAND DESKTOP
REPAIR/SUPPORT

GPS

CYRAX
TRAINING
RENTAL
SALES
GARMIN

TRIMBLE
TRAINING
RENTAL
SALES
LEICA

Projects (continued)

FB.
677
/IA

18

Silver Lake Bellingham

Topcon
3003

P. Sunny 30's. 1-15-13 T.C.
E.C.

Ke #22 BS #21
SS4 531

3989 → 4141

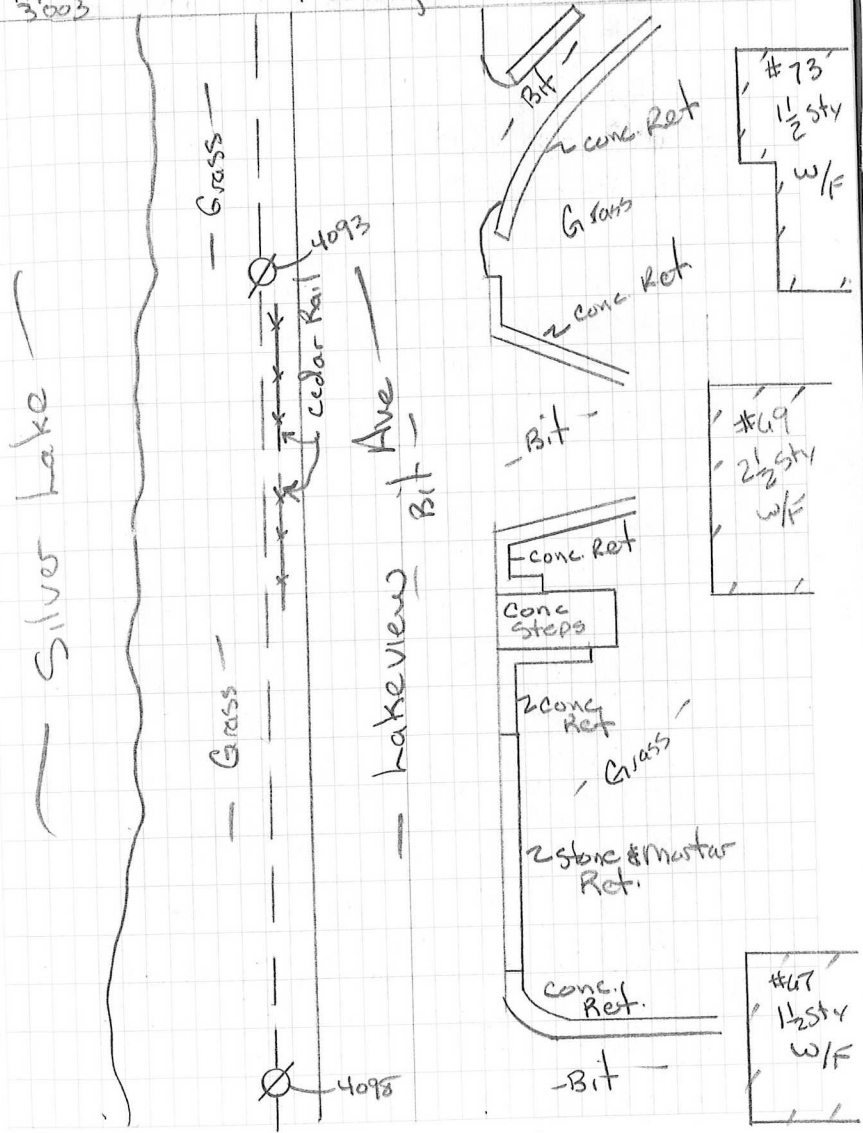
Continued from Book 457
pg 153

677/21

Topcon
3003

P. Sunny 30's.

1-15-13 T.C.
E.C.



3

Silver Lake Bellingham

Topcon
3003Tc # 23
5.48

P. Sunny 30's 1-7-13

Bs # 24
4.98T.C.
E.C.

4142 → 4244

Tc # 24 Bs # 23
5.07 5.39

4245 → 4350

677/4
477

5

Silver Lake Bellingham

Topcon
3003

Sunny 20's 1-18-13

T.C.
E.C.T.C. # 24 B.S. # 25
5.16 5.37

4351 → 4382

T.C. # 25 B.S. # 24
5.46 5.08

4383 → 4385

T.C. # 25 B.S. # 24 F.S. # 33
5.46 5.08 5.29

H2 X = 277-49-37 H2 DIST = 102.98

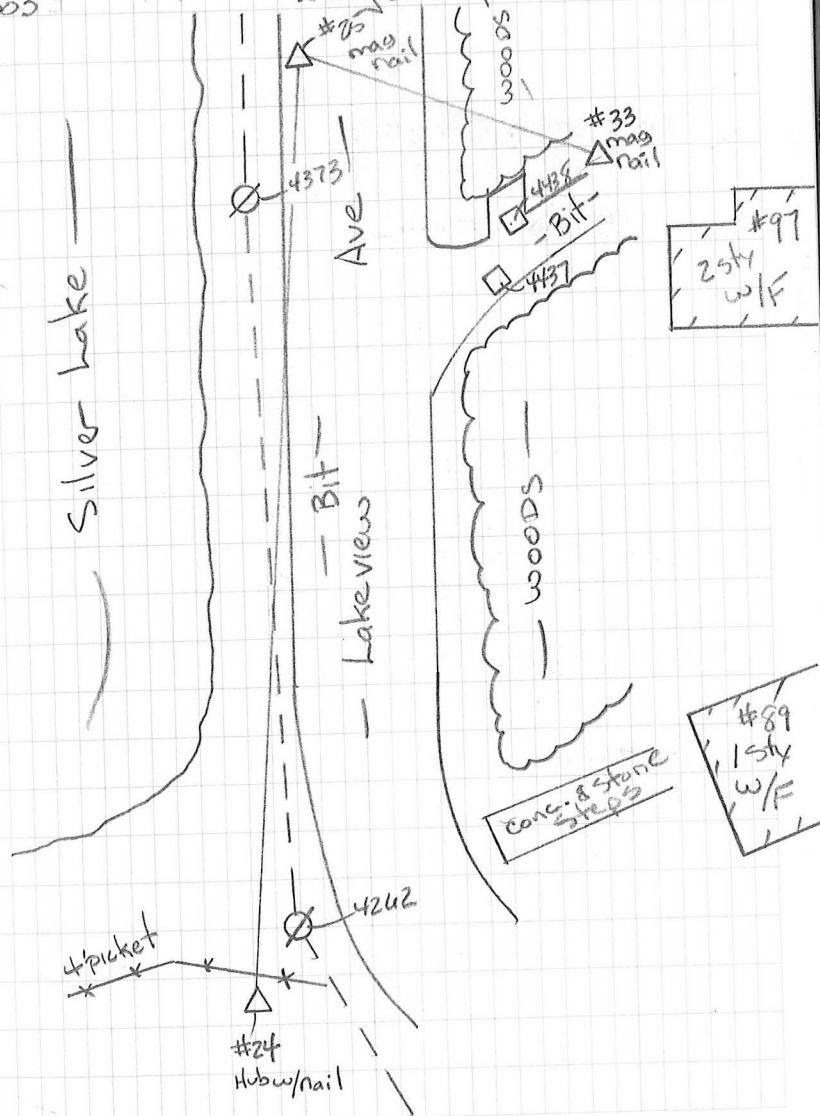
T.C. # 33 B.S. # 25
5.38 5.37 5.37

4386 → 4390

Topcon
3003

Sunny 20's

1-18-13

T.C.
E.C.477
6

7

Silver Lake Bellingham

Topcon
3003

-

Sunny 20's. 1-21-13

T.C.
E.C.Ac # 25 B.S. # 26
5.48 5.15

4391 → 4504

477/8

Topcon
3003

-

Sunny 20's

1-21-13

T.C.
E.C.

- Silver Lake -

Ave

- Bit -

Lakeview

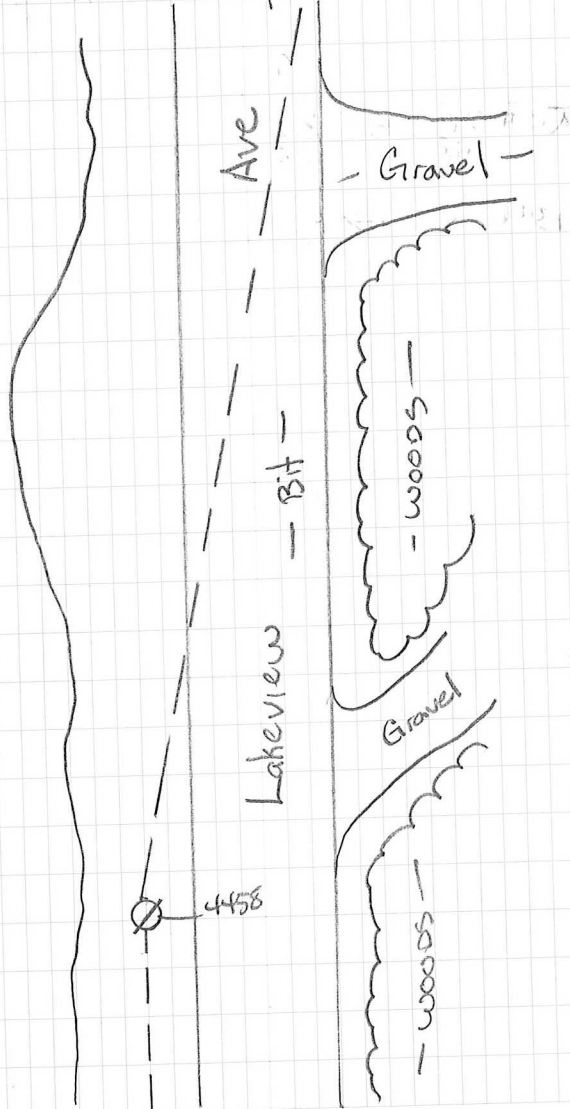
Gravel

- Gravel -

- woods -

- woods -

4458



15

677/16

17 Bellingham St. Acc. Victor Lane

Inst.	Tape	w/ther	Date	Crow
Topcon 3003	-	Sunny 70s.	9-17-13	T.C. E.C.

Re#17 B.S.#16 F.S.#96
5.39 5.30 5.39

H2X 281-22-21 H2DIST = 200.48

Re#96 B.S.#17 F.S.#97
5.48 5.30 4.66

H2X = 165-46-28 H2DIST = 49.68

Re#97 B.S.#96 F.S.#98
4.75 5.31 5.18

H2X = 218-53-01 H2DIST = 43.62

Re#98 B.S.#97 F.S.#99 = #9
5.42 =

H2X = 187-10-47 H2DIST = 185.76

Re#99 = #9 B.S.#98 F.S.#100 = #8
5.51 5.18 5.33

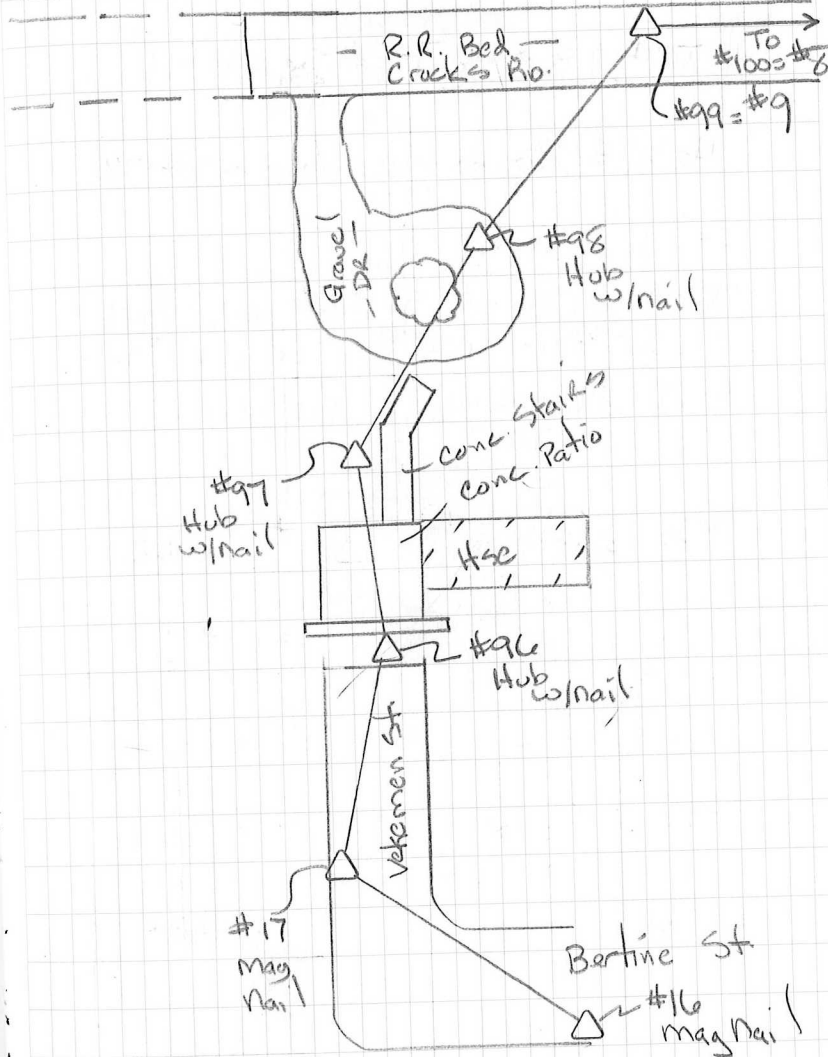
H2X = 231-08-21 H2DIST = 398.42

5.42

5.33

677/18

Inst.	Tape	w/ther	Date	Crow
Topcon 3003	-	Sunny 70s.	9-17-13	T.C. E.C.



5.18

19 Bellingham St. Acc. Victor Kane
 Inst. Tape Wthr Date crew
 Topcon - Sunny 70's. 9-17-13 T.C.
 3003 E.C.

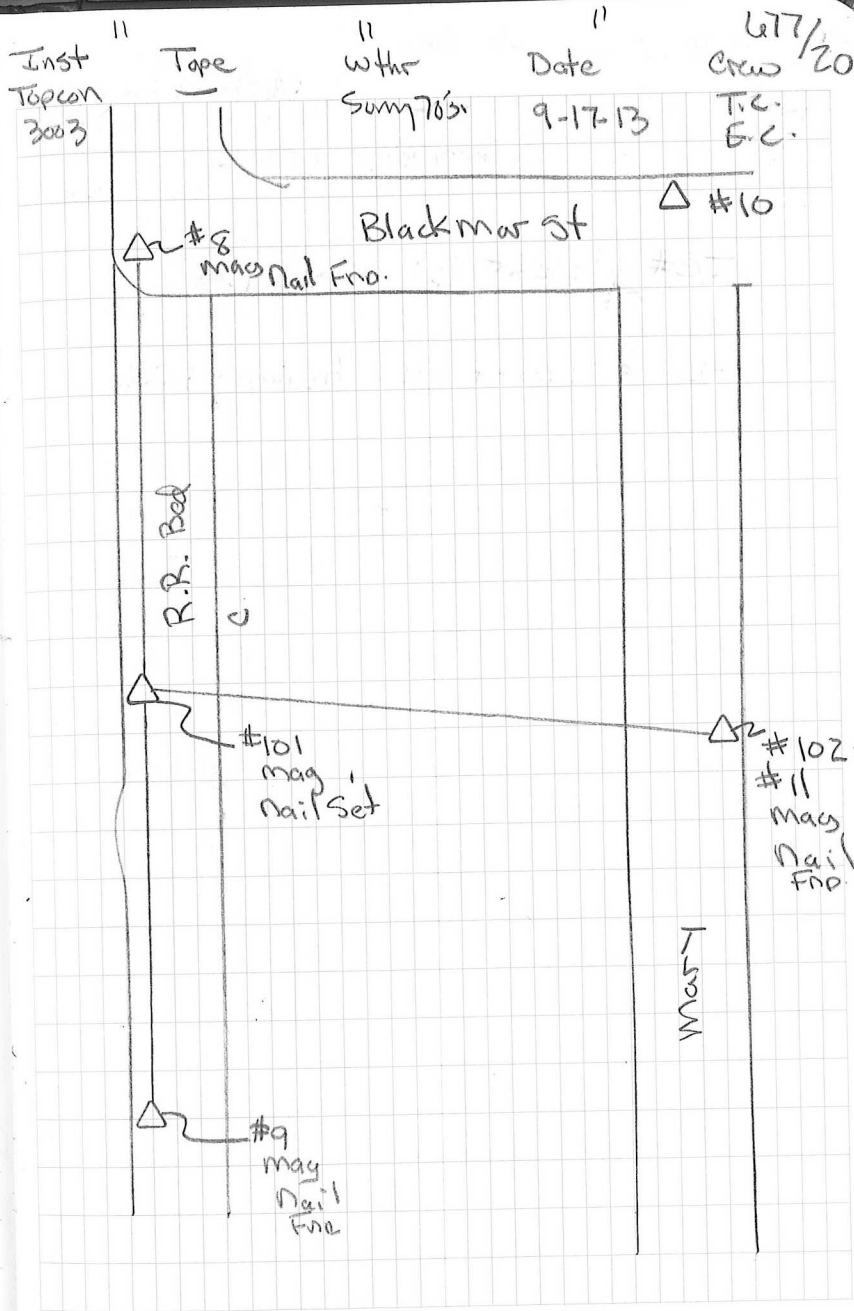
Re# 9 B.S.#8 F.S.# 101 = P.O.-L.
 5.51 5.33 4.94

H2X = 00-00-00 H2D15T = 1168.72

Re# 101 B.S.# 9 F.S.# 102 = #11
 5.03 5.42

H2X = 278-54-16 H2D15T = 158.82

4.94



21 Bellingham St. Acc.

Inst	Tape	wther	Date	Victor Lane crew
Topcon 3003	-	Sunny 70's	9-7-13	J.C. E.C.

π # 11 B.S. # 101 F.S. # 103
 5.43 4.94 4.88

H₂X = 170-48-36 H₂DIST = 113.87

π # 103 B.S. # 11 F.S. # 104 = 15
 4.97 5.32 4.87

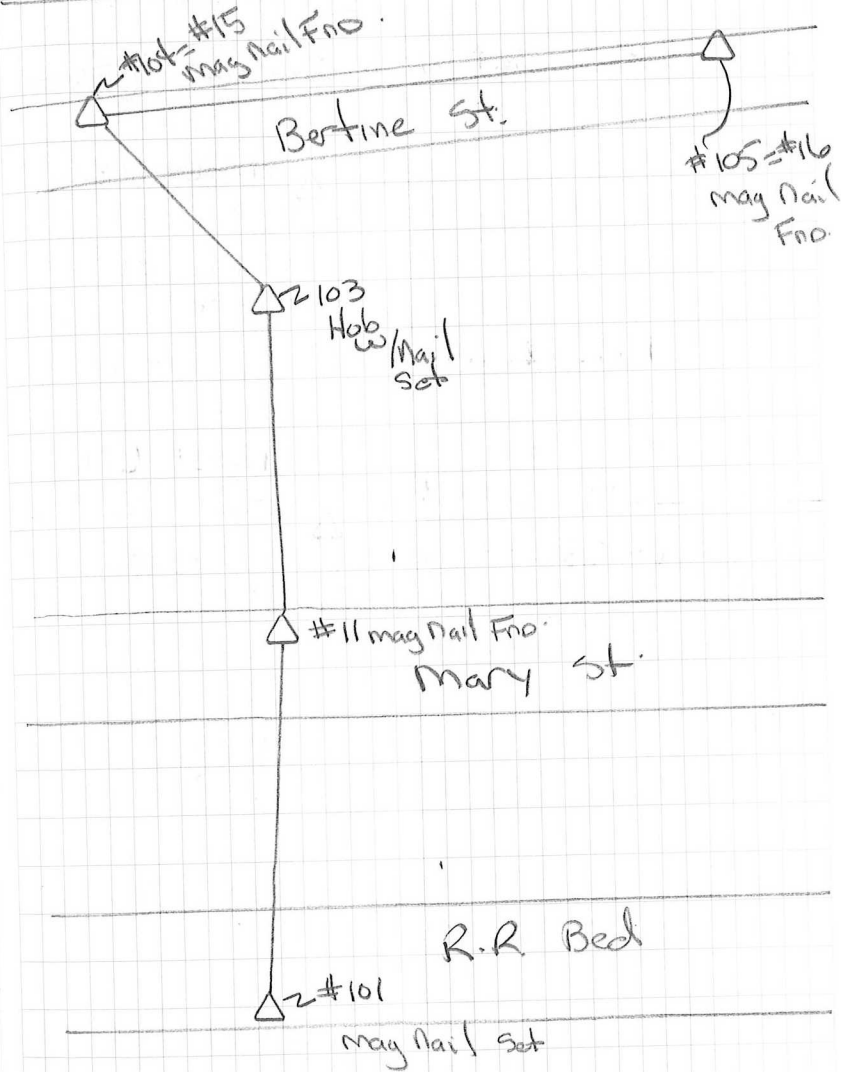
H₂X = 144-41-43 H₂DIST = 42.56

π # 104 B.S. # 103 F.S. # 105 = #16
 4.96 4.88 5.24

H₂X = 281-00-58 H₂DIST = 249.84

677/22

Inst.	Tape	wther	Date	crew
Topcon 3003	-	Sunny 70's	9-17-13	T.C. E.C.



23 Bellingham St. Acc

Inst.	Tape	with	Date	Crew
Sokkia SDL30	-	Sunny 70's.	9-18-13	T.L. E.C.

Bm 3.07 259.07 (256.00)

TP#1 1.46 257.67

8.64 246.31

TP#2 5.99 240.32

1.12 241.44

TP#3 12.31 249.13

0.31 249.44

TP#4 8.77 240.67

2.01 242.68

TP#5 11.37 231.31

1.60 232.91

TP 6 7.46 225.45

0.55 226.00

TP 7 9.07 216.93

5.46 222.39

" " " " 11/7/24

Inst.	Tape	with	Date	Crew
Sokkia SDL30	-	Sunny 70's.	9-18-13	T.L. E.C.

TBm "I" Spk in UP#1 Bertine St.

High point in Bit

Top of Nail in Hub ΔPT#96

Top of Step

Top Nail in Hub ΔPT#97

Top of Rock

Top May Nail ΔPT#98

Top of Rock

29 Bellingham St. Acc. Victor Lane
 Inst. Sokkia Date crew
 SOK30 Sunny 70s. 9-18-13

Bm $\frac{222.39}{\downarrow}$ -4.42 217.97
 (217.99)
 .02 ✓

Bm 1.05 $\frac{251.37}{\downarrow}$ (250.32)

TP#1 7.99 243.38
 6.20 $\frac{249.58}{\downarrow}$

TP#2 3.77 245.81
 0.57 $\frac{246.38}{\downarrow}$

Bm 11.74 234.64
 (234.64)
 .00 ✓

Bm 8.29 $\frac{228.28}{\downarrow}$ (217.99)

4.06 224.22

Bm 9.96 $\frac{234.18}{\downarrow}$ 1.55
 (230.63)

11 11 11 077/26
 Inst. Sokkia Date crew
 SOK30 Sunny 70s. 9-18-13
 T.C.
 E.C.

Top Nail DPT#9

Top "H" Top of flange Bolt on Hyp "Mary St"

High point of wall

Top Nail in Hub DPT#103

Top ^{mag} Nail in DPT#15

Top mag nail DPT#9

Top of mag Nail DPT#101

Top mag nail DPT#8

27 Bellingham St. Acc. Victor Lane
 Inst. Tape wthr Date Crow
 Topcon - Sunny 70s. 9-18-13 T.C.
 3003 E.C.

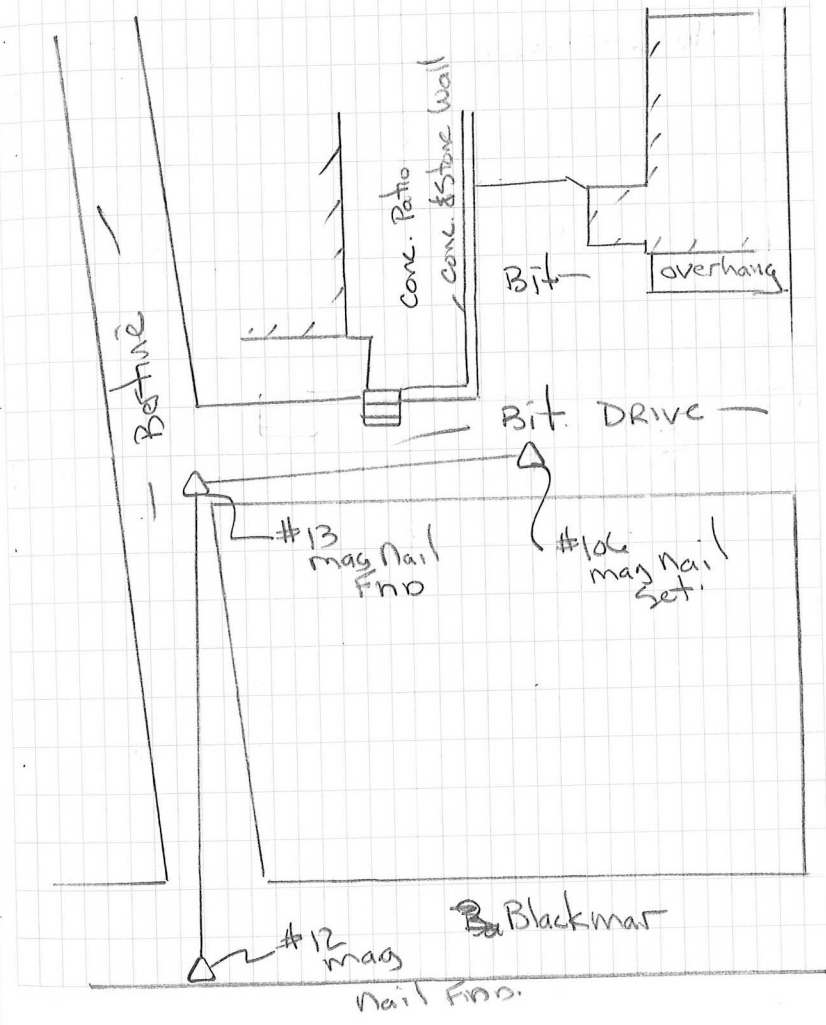
TC # 13 B.S # 12 F.S # 106
 5.68 5.33 5.39

H₂X = 278.03.12 H₂DIST = 55.12

TC # 106 B.S # 13
 3.48 5.59

4652 - 4691

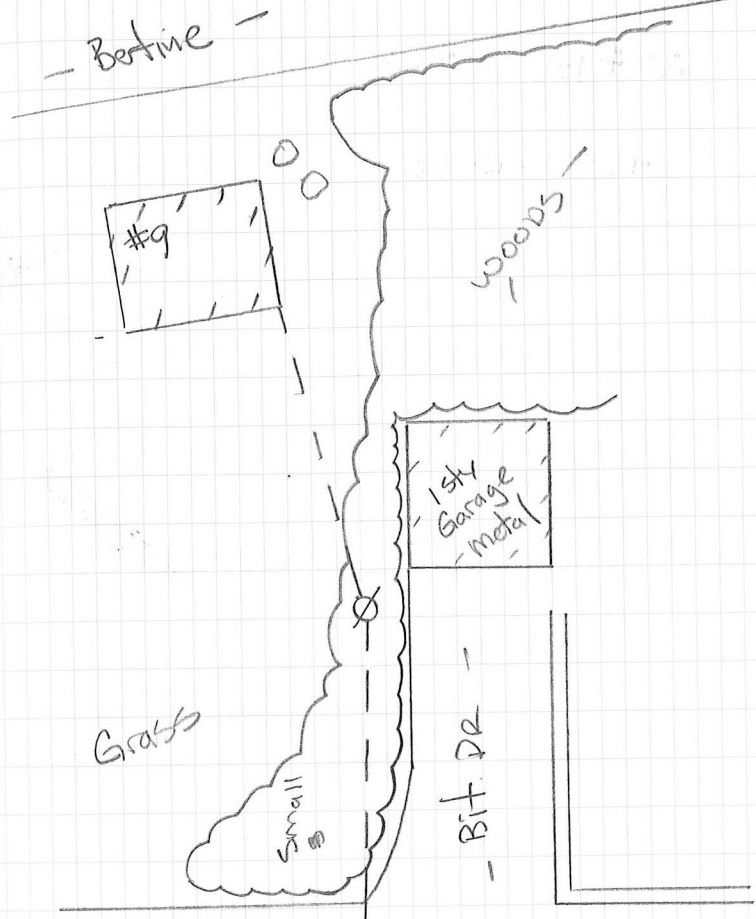
11 11 11 11 077/28
 Inst. Type wthr Date Crow
 Topcon 3003 - Sunny 70s. 9-18-13 T.C.
 E.C.



2nd 31 Bellingham St. Acc. Victor Lane
 Inst. Topcon 3003
 Tape -
 Wthr Sunny 70's.
 Date 9-18-13
 Crew T.C. E.C.

TC # 103 B.S # 11
 4.87 531
 4763 - 4815

11 11 11 UT/32
 Inst. Topcon 3003
 Tape -
 Wthr Sunny 70's.
 Date 9-18-13
 Crew T.C. E.C.



35 Bellingham St. Acc.

Inst.	Tape	wthr	Date	Crew
Sokkia SDL30	—	Sunny 80	9-19-13	T.L. E.L.

Bm 1.27 257.27 (256.00)TP#1 0.95 256.32
7.85 264.17TP 2 3.96 260.21
3.63 263.84TP#3 14.77 249.07
~~2.55~~ 251.19TP#4 15.42 235.77
4.15 239.92TP 5 6.96 232.96
4.17 237.13TP 6 3.57 233.56
3.41 236.97Bm 5.89 231.08
(231.10)
.021

Victor Lane

Inst.	Tape	wthr	Date	Crew
Sokkia SDL30	—	Sunny 80's	9-19-13	T.L. E.L.

677/36

" " " " " " " "
TBM I Spk in UPL #1 Bertine St.

High point in Rock

Top Nail in Hub APT # 108

High point in Rock

Top mag Nail APT 107

Top conc. wall

Top mag Nail APT # 106

Top mag Nail APT # 13

37 Bellingham St. Acc. Victor Lane

Inst.	Type	w/ht	Date	Crow
Sokkia	-	Sunny Co's.	9-23-13	T.C. E.C.
Set 4	-			

Te# 16 BS# 15
5.50 5.00

4889-4926

Te# 16 BS# 15 FS# 109
5.50 5.00 5.59

H2X = 291-47-15 H2DIST = 130.72

Te# 109 B.S# 16 FS# 110
5.75 5.35 4.96

H2X = 196-33-00 H2DIST =

Te# 109 B.S# 110
5.75 4.96

4927-4958

— 9-24-13 —

Te# 109 BS# 110
5.19 5.06

4959-4987

Te# 109 BS# 16 FS# 111
5.19 5.92 4.58

H2X = 191-55-05 H2DIST =

4987

5.06

477/38

Inst.	Type	w/ht	Date	Crow
Sokkia	-	Sunny Co's.	9-24-13	T.C. E.C.
Set 4	-			



5.08

39 Bellingham St. Acc. Victor Lane

Inst.	Tape	with	Date	Crew
Sakkia	-	Sunny	9-24-13	T.C.
Set 4		60's		E.L.

Te# 111 BS# 109
487 505

4988 - 5021

Te# 96 BS# 97
5.39 4.59

5022 - 5086

Te# 97 BS# 98
4.74 5.18

5087 - 5167

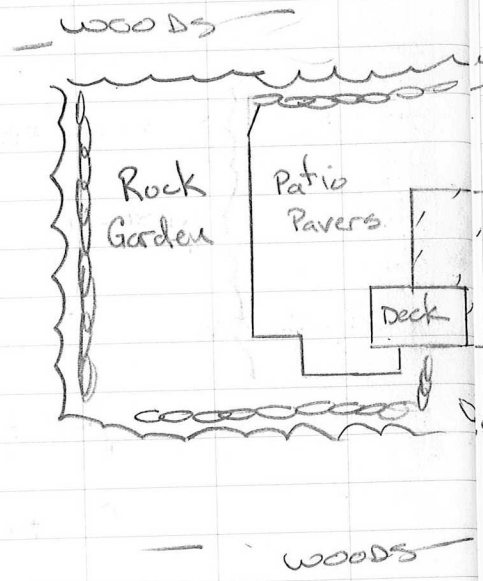
4.59
99

6/1/40

41

Bellingham St. Acc. Victor Lane.

Inst.	Tape	withr	Date	Crew
Sokkia Set 4	—	Sunnylo's	9-24-13	TC EC.



011/42

Inst.	Tape	withr	Date	Crew
Sokkia Set 4	—	Sunnylo's	9-24-13	TC E.C.



43 Bellingham St. Acc. Victor Lane
 Inst. Tape Wthr Date Crew
 Sokkia — Sunny 70's 9-30-13 T.C.
 Set 4 E.C.

Re# 98 B.S.# 9
 5.40 5.46

5168 - 5232

Re# 9 B.S.# 8 F.S.# 12
 5.41 5.42 5.42

H2X = 176-40-55 H2DRT = 56.29

Re# 112 B.S.# 9
 5.58 5.46

5233 - 5274

Re# 11 B.S.# 10 F.S.# 13
 5.48 5.35 5.20

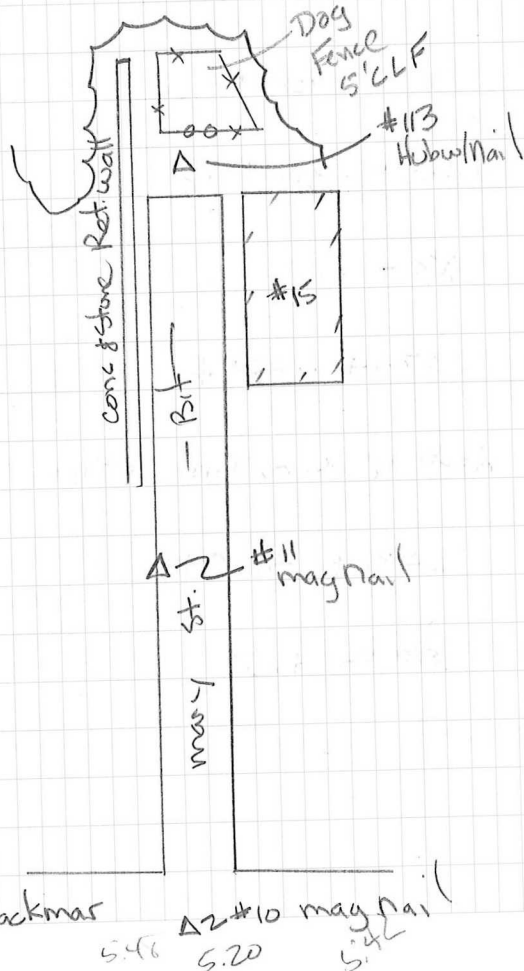
H2X = 184-46-55 H2DRT = 147.20

Re# 113 B.S.# 11
 5.34 5.34

5275 - 5332

5.34

44
 Inst. Tape Wthr Date Crew
 Sokkia — Sunny 60's 9-30-13 T.C.
 Set 4 E.C.



45 Bellingham St. Acc. Victor St.
 Inst. Tape Wthr Date Crew
 Sokkia - Sunny 6's. 9-30-13

re# 18 B.S.# 14
 5.09 5.32

5333 - 5407

10-1-13

re# 19 B.S.# 18
 5.56 5.37

5408 - 5403

re# 19 B.S.# 18 F.S.# 114
 5.56 5.37 5.48

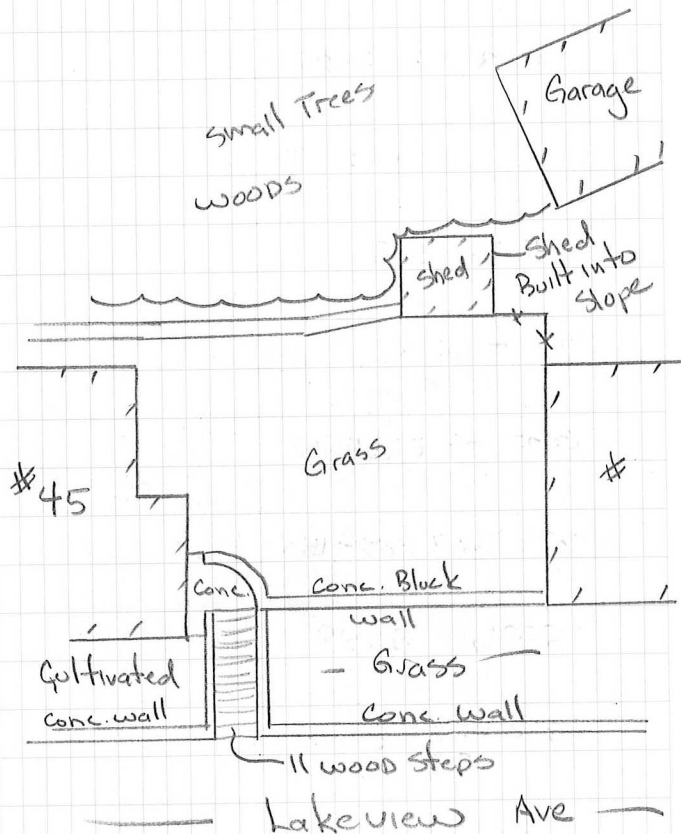
H2X 203-08-40 H2D15T=

re# 114 B.S.# 19
 5.41 5.42

5414 - 5476

5.48

11 11 11
 Inst. Tape Wthr Date Crew
 Sokkia - Sunny 7's. 10-1-13 T.C.
 Set 4 E.C.



BD 5475

47 Bellingham St. Acc. Victor St.

Inst.	Tape	Wthr	Date	Crew
Sokkia	-	Sunny 70's	10-1-13	T.C. E.C.
Set 4				

Te# 114 B.S# 19 F.S# 115
 5.01 5.42 5.06

H2 \bar{x} = 287-35-40 H2 DIST

Te# 114 B.S# 115
 5.01 5.06

5477 - 5496

Te# 115 B.S# 114
 5.20 5.48

5497 - 5555

Te# 18 B.S# 14
 5.70 5.00

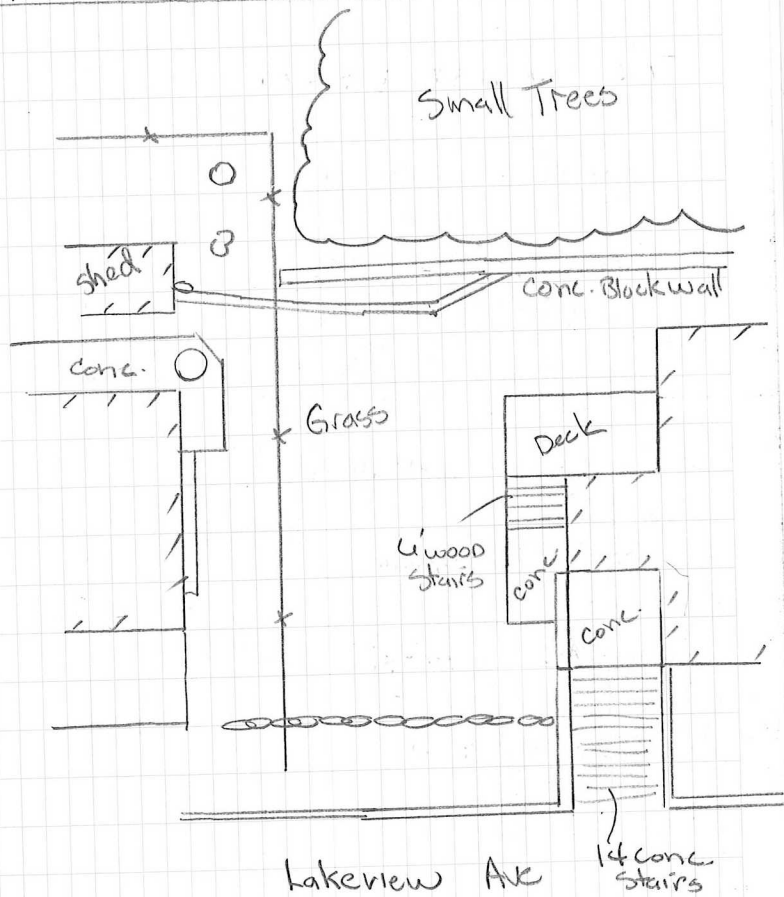
5556 - 5558

Te# 14 B.S# 12
 5.39 5.00

5559 - 5562

" " " " 47/48

Inst.	Tape	Wthr	Date	Crew
Sokkia	-	Sunny 70's	10-1-13	T.C. E.C.
Set 4				



49

BELLINGHAM SILVER LAKE

L803 CHECK DRAINAGE → INV.

T=24°

FILE: LAKE ST 3-24-14

TC @ 31 @ 5.48

BS 3A @ 5.4

TBM DE @ 5.4

F#5701

MFLY 3A @ "

F#5718

9'x5' BOX CULVERT
LAKE ST.

3/27/14

BELLINGHAM

T=30°

L803

SILVER LAKE

RF T

TC 4

HI=5.50

HO=5.4

BS 3

PH ♂

5730

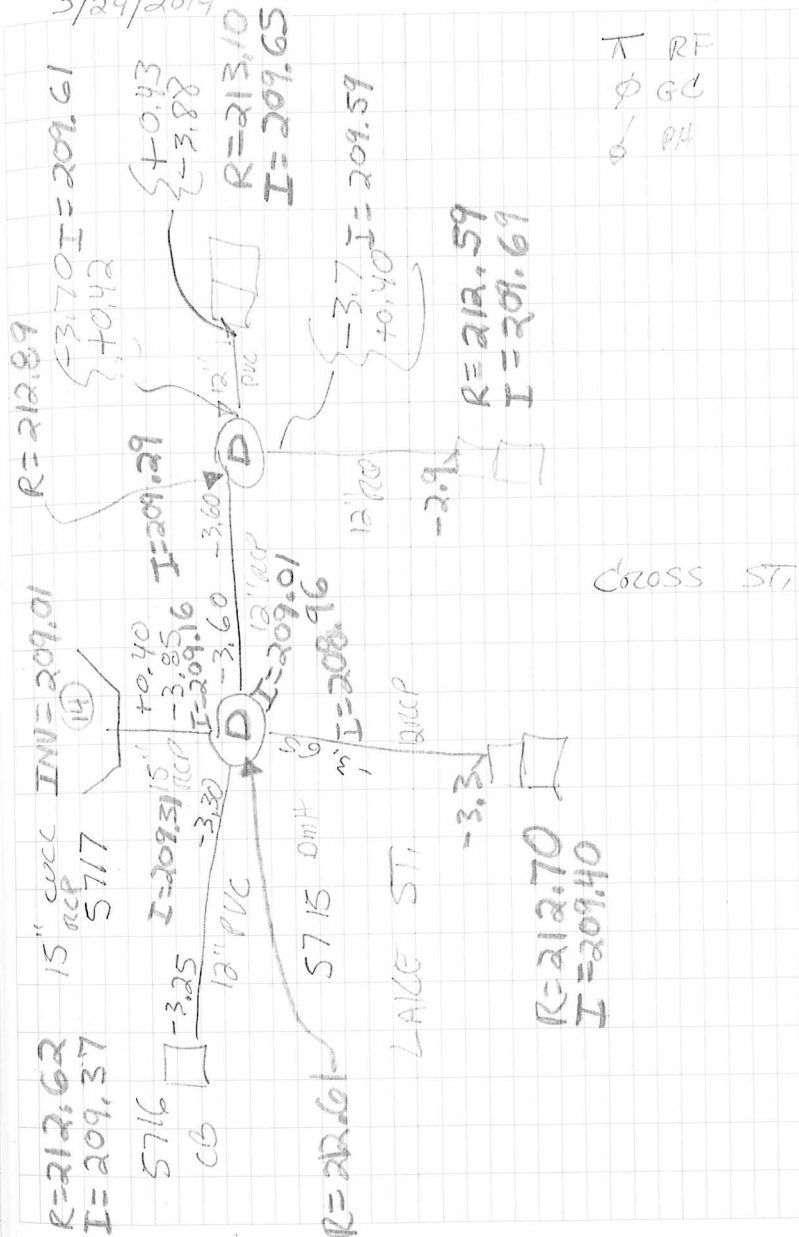
MFLY 3

5763

MFLY 3

3/24/2014

677/50



L703 BELLINGHAM LAKE
 HIAWATHA

AC 16 BS @17

VD = 13.67 Om = 104.81 () R

HI = 5.31 H.O. = 5.00

8001

MFLY BM I (5560) R

8002

EP

8026

MFLY M

π PH

φ GG

T = 10° F

SUNNY

2/28/2014

53/611 1019 Bertine St

TS16 #8167 Cloudy 50's 4/22/19

RTF-CP

File: 1019-4-22-19

T@107 H15.01 BS 16 @ 6.0

Available Pts 5790-6000

Stk #15 good ✓ stored as #5790

Topo Pts 5791-5873

5874 Temp MN/SET @ 6.00

5875 MFLY #16

T@5874 H15.61 BS 107 @ 6.00

Topo Pts 5876-5926

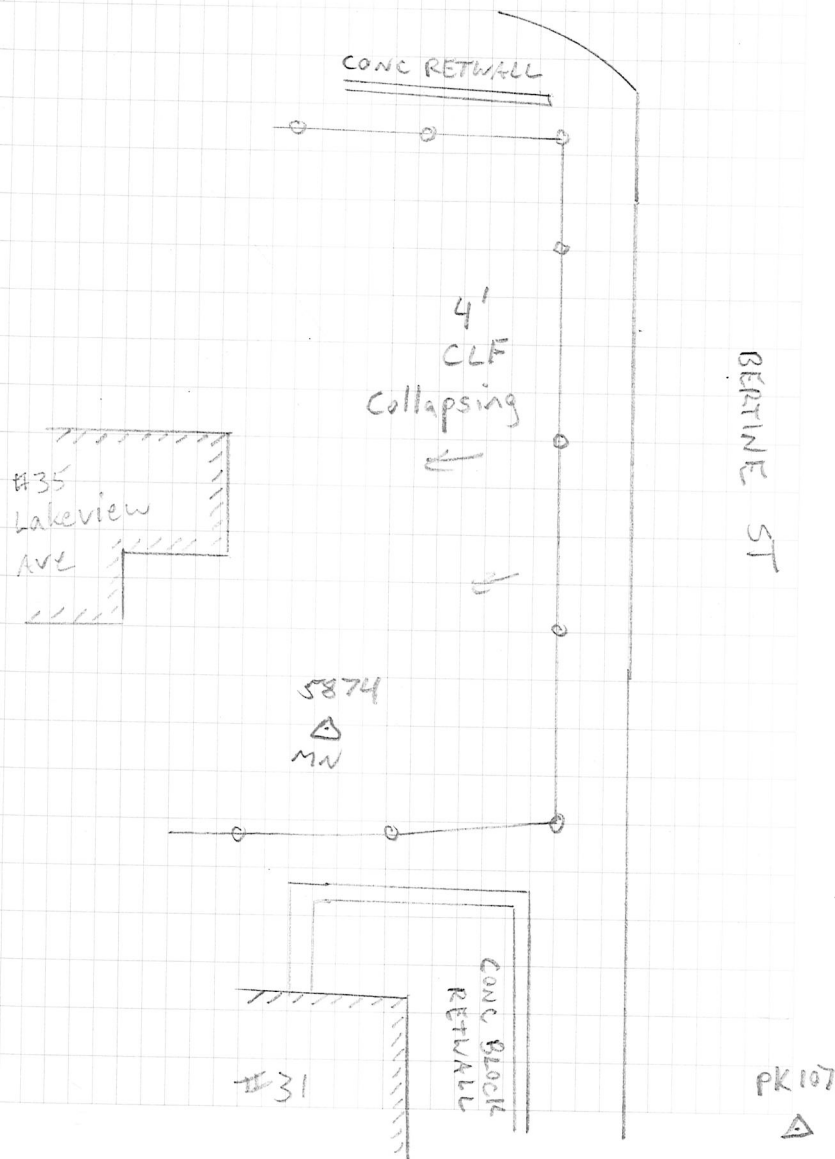
*5918 @ 9.00

5927 MFLY 107

Bellingham

54

△ PK 16



53/611 1019 Bertine St
TS16 #8167 Cloudy 50's 4/22/19
RTF-CP
File: 1019-4-22-19

⊗ @ 107 H15.01 BS 16 @ 6.0
Available Pts 5790-6000

STK #15 good ✓ stored as #5790

- Topo Pts 5791-5873

5874 Temp MN/SET @ 6.00
5875 MFLY #16

⊗ @ 5874 H15.61 BS 107 @ 6.00

Topo Pts 5876-5926

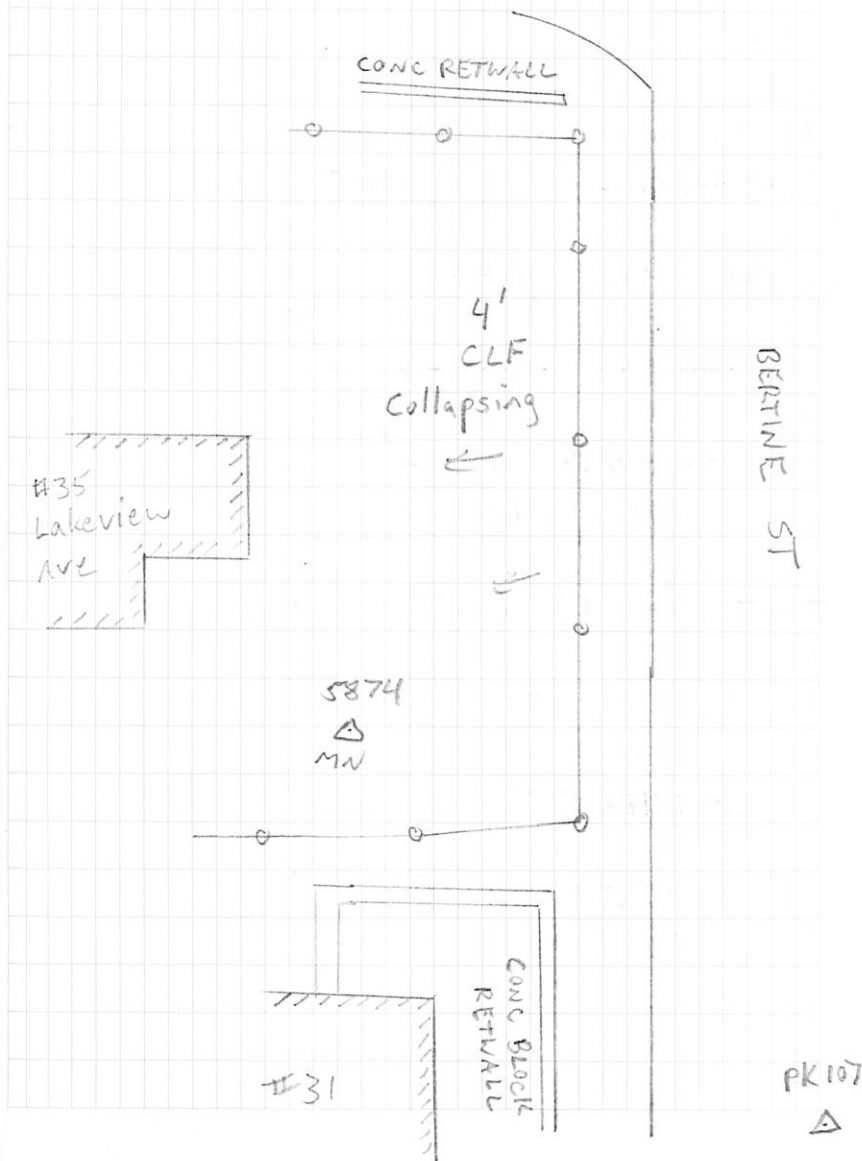
* 5918 @ 9.00

5927 MFLY 107

Bellingham

54

△ PK 16



55/677 1084 ROGER ST BELLINGHAM

TS16 CLUTY 40'S 11/30/2020 RTF
2997 CP

FILE:1084_TRAV/1084_55

TRV 70+
MON 3000

TE11 HI=5.53 BS 8@4.85

FS 70(MN/SET)@5.27

HZ & 171.27.59 DIST 171.039

TE11 / BS 70 / FS 8

HZ & 188.32.01 DIST. 684.516

TE 70 HI=5.27 BS 11@5.53

FS 13 (658/39) @5.27

HZ & 106.40.45 DIST. 105.023

TE 70 / BS 13 / FS 71 @5.41 (MN/SET)

HZ & 104.23.17 DIST. 283.716

TE 70 / BS 71 / FS 11

HZ & 148.55.57 DIST. 171.037

55-FS 300 (1" IP UP 0.4' @0.9

HZ & 346.24.13 DIST. 146.19

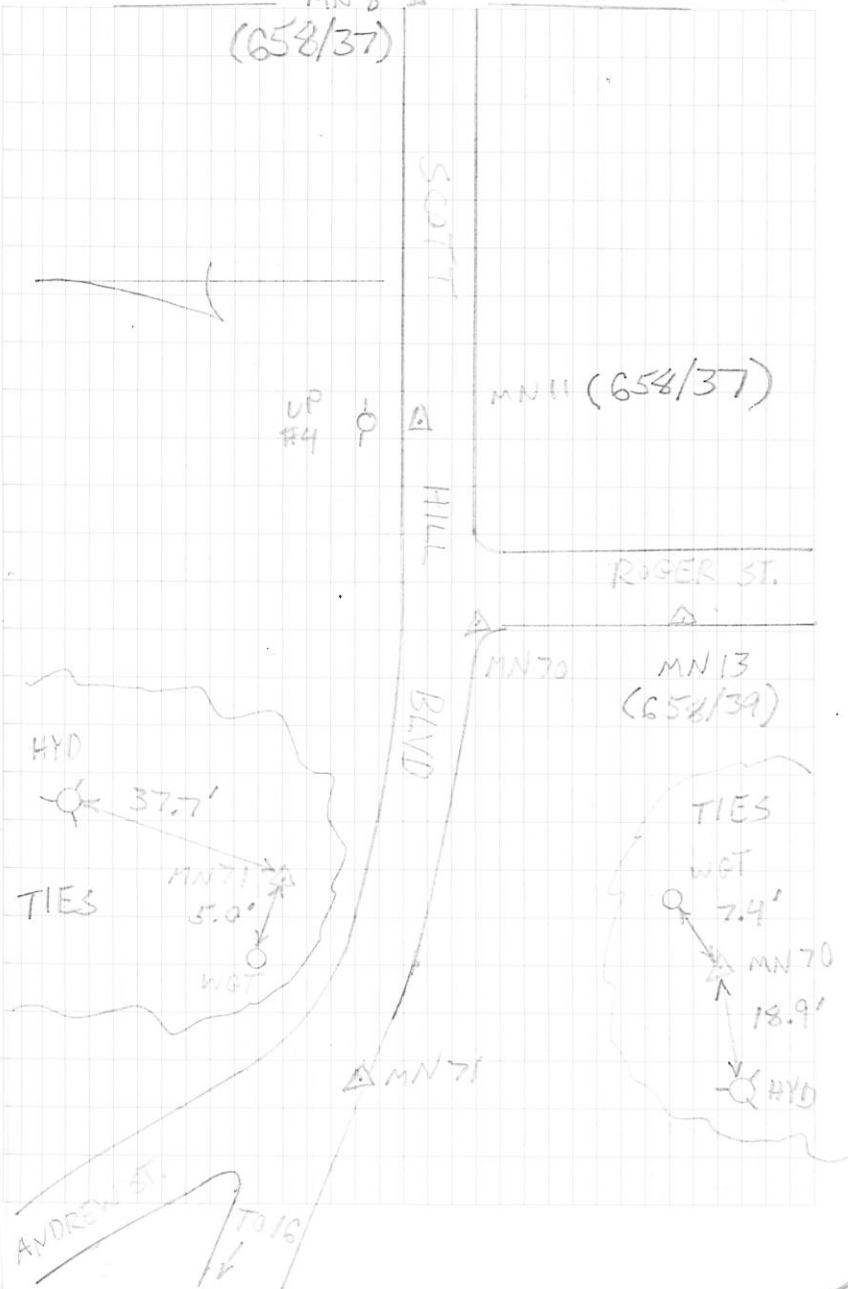
TE 71 HI=5.41 BS 73@5.27

FS 16 (658/41) @5.39

HZ & 199.51.37 DIST. 260.470

MNS A
(658/37)

S. MAIN ST



57/6/20
 1084 ROGER ST. BELLINGHAM
 TS 16 CLOUDY 50'S 12/1/2020 RTF
 2997 1084-TRAV/1084.SS CP

π@16 HI=5.43 BS 71@5.43
 FS 72 (MN/SET) @ 5.18
 HZ & 175.52.27 DIST. 255.039

SS 301 3" METAL POST VP 4' HZ 141.09.36 DIST 76.35

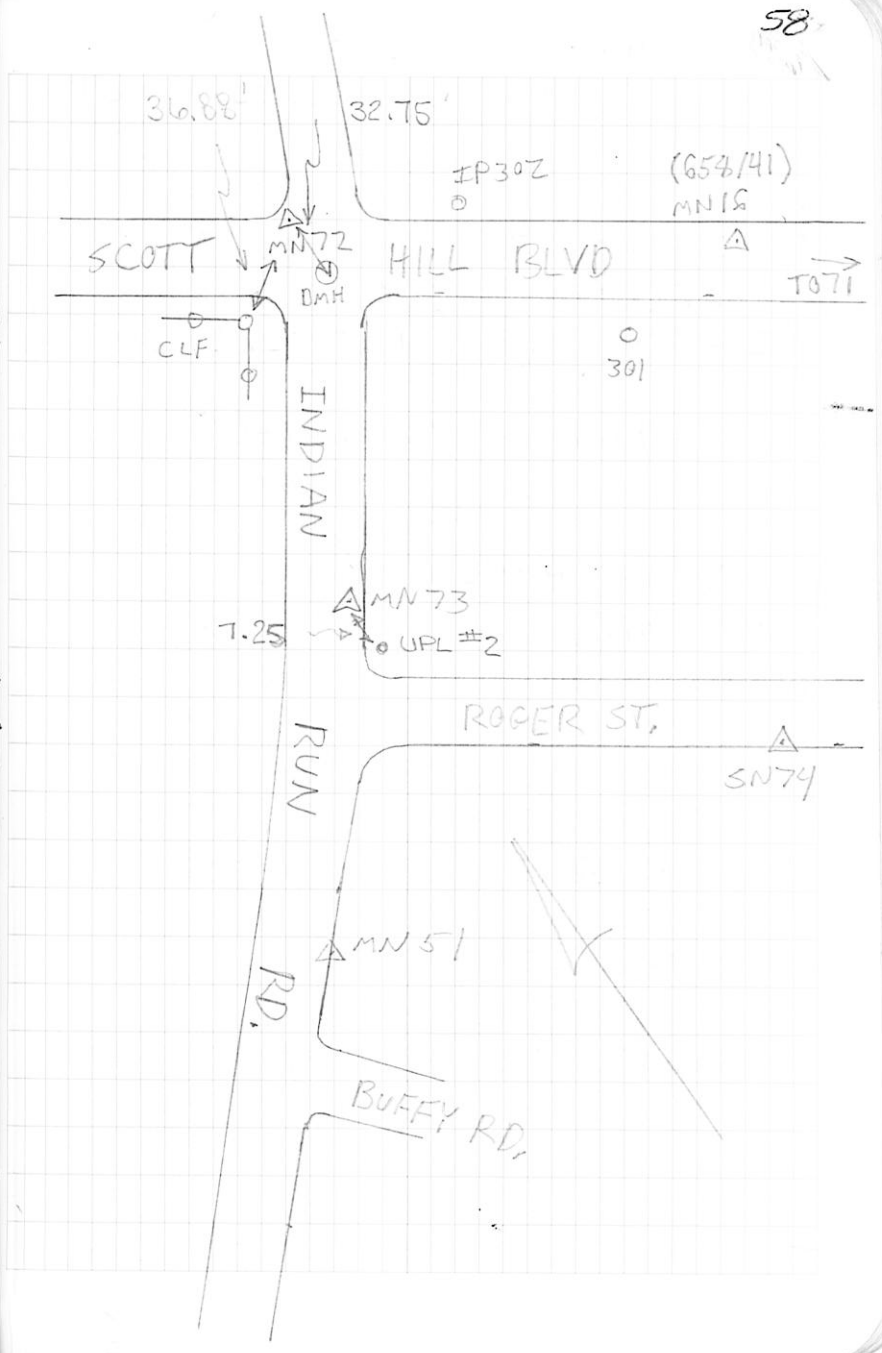
π@72 HI=5.18 BS 16@5.43
 FS 73 (MN/SET) @ 5.35
 HZ & 77.51.02 DIST. 297.4836.

SS 302 1" IP FLUSH @ 1.3
 HZ 357.05.07 DIST 90.122

π@73 HI=5.35 BS 72@5.18
 FS 74 (HT/SET) @ 5.35
 HZ & 113.12.17 DIST 295.999

π@73/BS 74/FS 51 (658/71) @ 5.24
 HZ & 87.25.27 DIST 151.014'

π@73/BS 51/FS 72
 HZ & 159.22.16 DIST 297.74829



59/677

1084 ROGER ST. BELLINGHAM

TS 10
2997

CLOUDY 50'S 12/1/2020

RTF
CP

T@ 74 HI=5.35 BS 73@5.35

FS 75 (H/T SET) @ 5.15

HZ & 164.54.13 DIST 424.04

SS 303 REBAR (CAPPED "LAND PLANNING") 6.0

HZ & 21.58.57 DIST 101.96

304-308 SHOTS ON ST/WALL

309 DH/FND 6.0

HZ & 308.33.49 DIST 45.63

T@ 75 HI=5.15 BS 74@5.35

FS 76 (DH/SET) @ 5.10

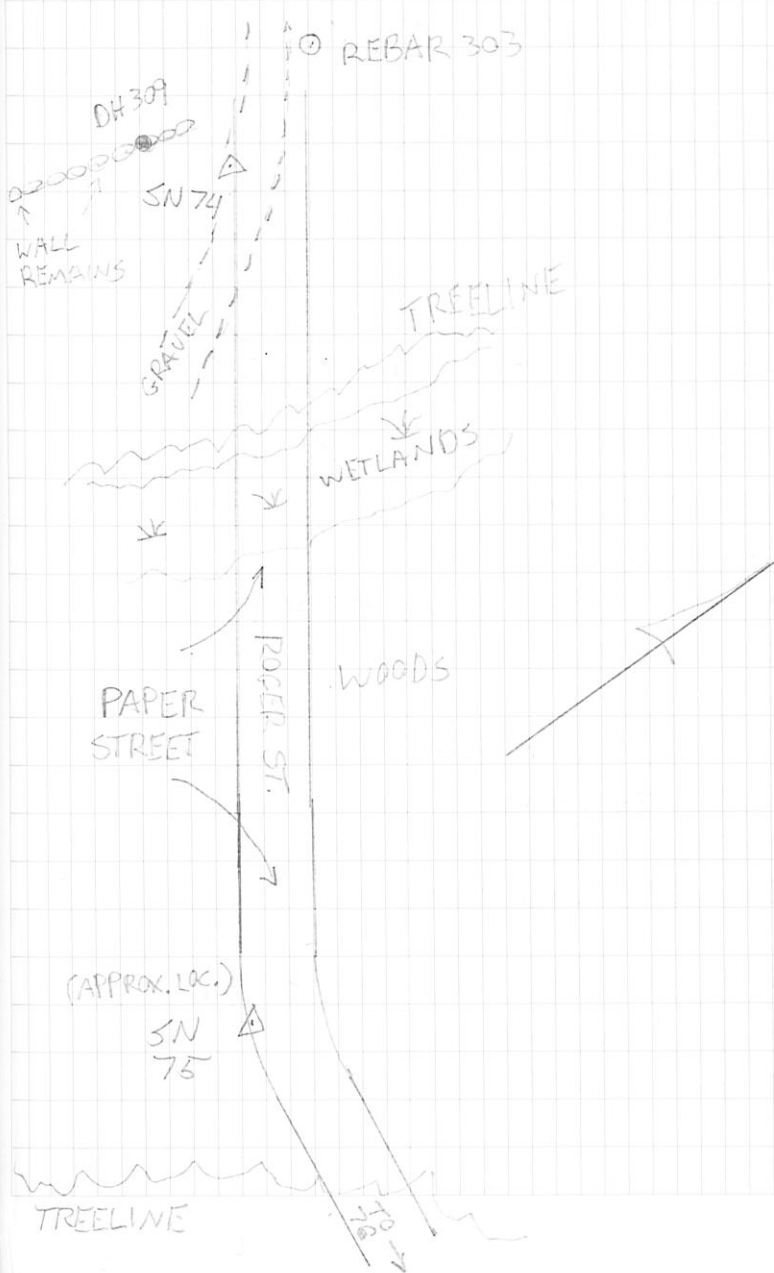
HZ & 142.58.10 DIST 188.856

SS 310-315, 317 SHOTS ON ST/WALL

316 1 1/2" IP IN ST/WALL ..

HZ & 262.27.32 DIST. 198.73

60



1084 ROGER ST BELLINGHAM

TS 16 CLEAR 30'3 12/2/2020 ATE CP
2997 1084 TRAV/1084.55

T @ 76 HI = 5.23 BS 75 @ 5.30
FS 13 @ 5.12
HZ \angle 99°-06'-23" DIST 183.376'
FS 77 @ 5.10 STKNAIL SET.
HZ \angle = 248-38'-43" DIST = 312.031'

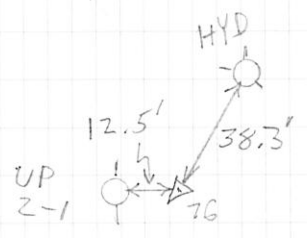
SHOTS ON WALL 318 -
325 END OF WALL.
326 IP FND. 1" UP .5"
 \angle = 149°-31'-51" DIST = 45.108'
327 BRAN POLE FND 328

T @ 77 HI = 4.94 BS 76 5.23
FS 329 DHL FND 5.10
 \angle = 223-13-07 DIST = 50.54'
333-338 WALL SHOTS.

T @ 76 5.23 BS. ON 13 @ 5.12
FS 339 DHL FND 6.0
 \angle = 191°-54'-05 DIST = 269.907'

330-332 USED AS CALC. PNT'S

T @ 13 5.12 BS ON 76 (5.23)
FS TO AMAG SET 5.25
 \angle = 181°-50'-32" DIST = 105.291'
FS 340 1/2" REBAR. FLUSH.
 \angle = 266°-07'-22" DIST = 44.287'



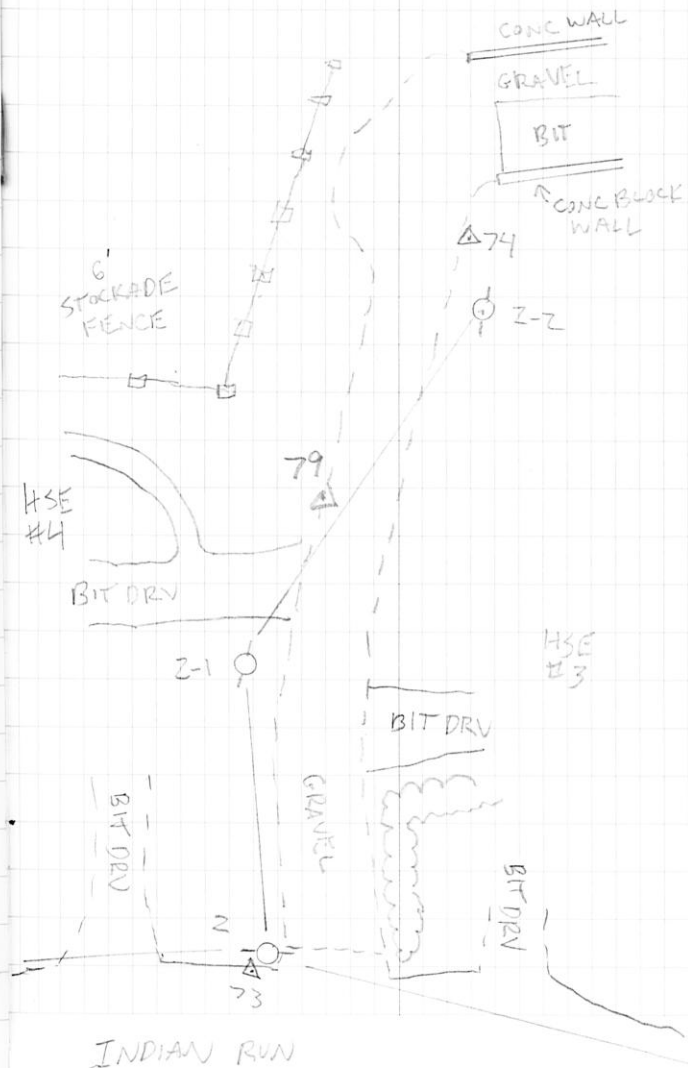
65/677 1084 ROGER ST BELLINGHAM
TS16 CLEAR 30'S 12/15/2020 RIF
2997 FILE: 1084-DETAIL CP

TC 73 → BS 74

(5.05) (6.0)

10865-10976

10977 MFLY 74



67/67 1084 ROGER ST. BELLINGHAM
TS16 P. CLOUDY 40'S 12/28/2020 RTF
2997 CP
FILE: 1084-STK122820
1084-DETAILZ

TC11 → BS 70 PTS 10978-10982
(5.52) (5.40)

STK 10605 NF	STORE 10978
10602 NF	10979
10653	10980
10653 NF	10981
10651 NF	10982

DETAIL ~~10983~~-10983-10997 10997 MPLY 70

TC13 → BS 70
(5.34) (5.40)

DETAIL 10998-11006 11006 MPLY 70
11011-11013

STK 10606 NF	STORE 11007
10608 NF	11008
10609 NF	11009 = old CLF CORNER
10611 NF	11010

68
1084 ROGER ST BELLINGHAM
TS16 CLEAR 40° 12/29/2020 RTF
2997 CP
1084-STK122820
1084-DETAILZ

TC75 → BS 76 11014-
(5.03) (5.40)

STK 10619	STK FND	STORE 11014
10622 NF		11015
10621 NF		11016
10614 NF		11017
10654 NF		11018
10655	DH/FND SHOT AS #341	
10629		11019

341 DH/FND #2 & 191.57.26 DIST. 226.16'

78 SN/SET #2 & 178.15.27 DIST 290.35'

DETAIL 11020-11023 10x12 SHED

69/67 1084 ROGER ST BELLINGHAM
TS16 12/29/2020 RTF
2997 CP

TC 78 → BS 75
(4.72) (5.60)

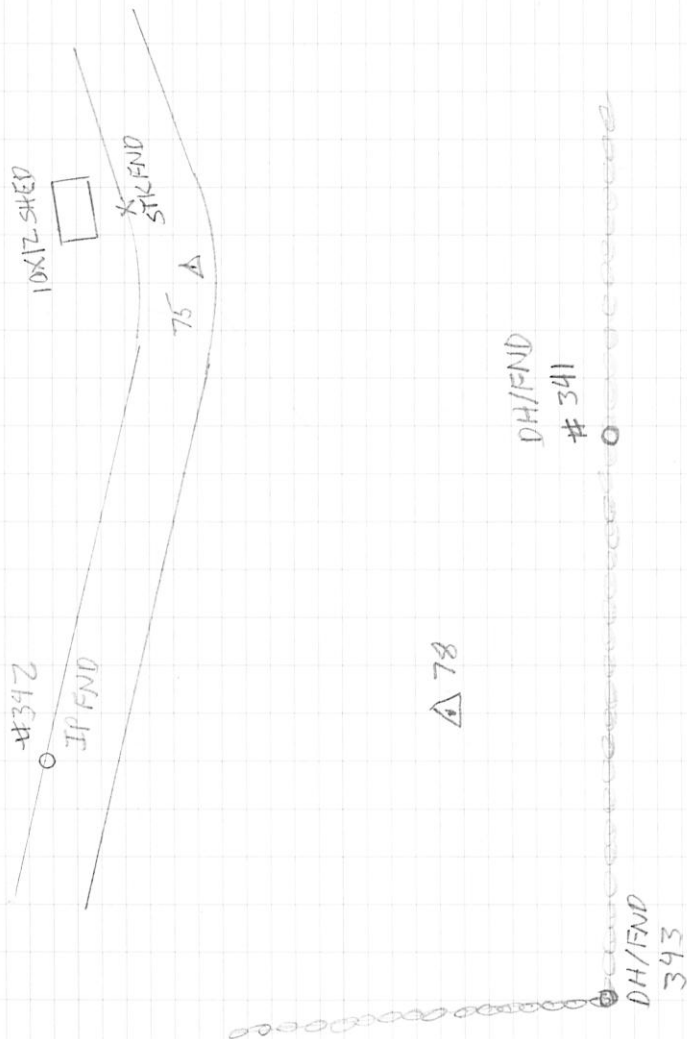
FS 342 - 3/4" IP UP 0.5
HZ & 301.30.31 DIST 232.54'

FS 343 - DH/FND
HZ & 178.02.59 DIST 179.60'

ST/WALL 11025, 26, 28, 29, 30-33

STK 10630	NF	STORE 11024
10656	NF	11027

11034 MFLY 75



7/6/11 1084 ROGER ST BELLINGHAM
TS 16 P. CLOUDY 30'S 1/6/2021 RTF
2997 1084 - DETAIL 2 CP
1084 - STK 122820

TR 74 → BS 73
(5.26) (5.40)

DETAIL 11035 - 11083 11084 MFLY
FS 79 MAG/SET (6.0)
HZ & 3.32.34 DIST 152.342'

344 - 1 1/2" IP FND FLUSH
HZ & 160.23.02 DIST 58.81'

STK 10627 NF STORE 11085
10634 NF 11086

TR 79 → BS 73
(5.29) (5.40)

DETAIL 11087 - 11112 11113 MFLY 73

STK 10635 - NF STORE 11114
10636 NF 11115

72
109

TR 79 / BS 73

FS 345 1 1/2" AXLE FND UP 1.2' BASE SH OT
HZ & 02 44 52 DIST 150.526'

TR 73 → BS 72
(5.23) (5.40)

DETAIL 11116 - 11121 MFLY 72 11122

73/677 1084 ROGER ST BELLINGHAM
 TS16 P. CLOUDY 30'S 1/7/2021 RTF
 2997 FILE: 1084-STK12820 CP

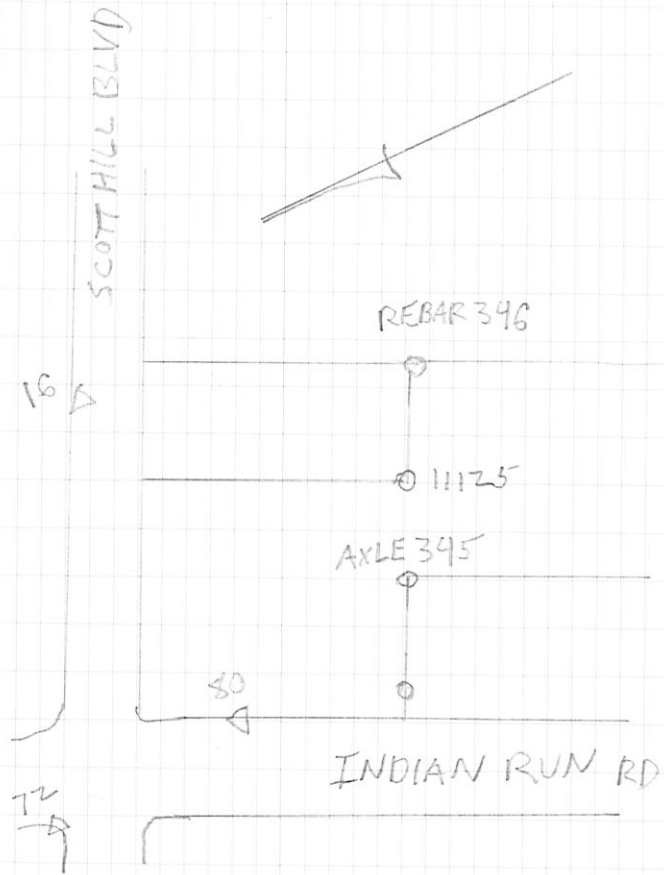
T@72 → BS 16
 (5.09) (5.40)

FS 80 @ 5.15' MN/SET
 HZ & 65-18.42 DIST 92.690'
 11125 3" IP VP 4' IN CONC

STK 10646 NF	STAKE 11123
10645 NF	11124
10647 NF	11126
10648 NF	11127
10649 NF	11128
10650 NF	11129

T@80 → BS 72
 (5.15) (5.09)

FS 346 @ 1.32 CAPTED REBAR LAND PLANNING
 HZ & 135-54.34 DIST 231.953'



75/677

1084 BELLINGHAM

TS 16 CLEAR 40'3 W/4/2021 RTF CP

2997 FILE: 1084 TRAVII-4-21

SEE PG 58

X@73 HI=5.15 BS 51 @ 5.02

FS 81 (MAG/SET) @ 5.21

HZ & 160.36.04 DIST 299.486

FS 74 @ 5.10

HZ & 272.34.19 DIST 296.00

FS 347 @ 8.0 (CAPPED REBAR, LAND PLANNING)

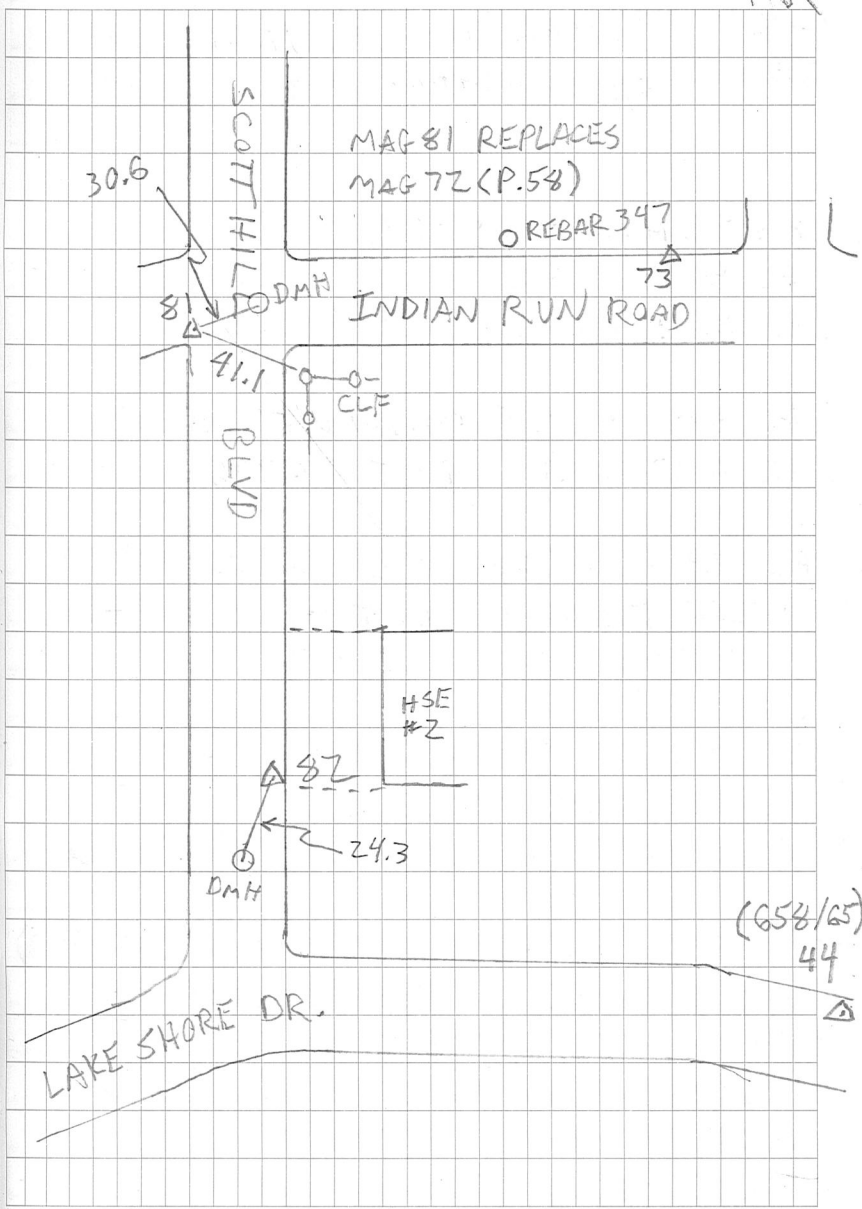
HZ & 169.59.59 DIST 120.336

X@81 HI=5.21 BS 73 @ 5.15

FS 82 (MAG/SET) @ 5.30

HZ & 89.38.23 DIST 207.429

76



77/677

1084 BELLINGHAM

7346

CLEAR 50'S

11/9/2021

RTF

2997

FILE: 1084 TRAV 11-4-21

LP

T@82 H15.24 BS 81 @ 5.24

FS 44 @ 5.32

HZ & 113.12.50 DIST 482.336

FS 348 1" IP DOWN 0.5' (6.00)

HZ & 13.26.21 DIST 63.906

FS 349 1.75" IP UP 2' (0.2)

HZ & 338.08.00 DIST 71.02

T@44 H15.32 BS 82 @ 5.24

FS 48 @ 5.32 5.22

HZ & 182.43.03 DIST. 538.892

- FS 350 3/4" REBAR w/DIT DOWN 0.3' (5.10)

HZ & 1.15.33 DIST. 271.021

- FS 351-354, 357, 358 FENCE SHOTS

- FS 355 1" IP IN PAVEMENT (5.10)

HZ & 296.58.10 DIST. 86.951

- FS 356 3/4" IP LEANING NW'LY

HZ & 318.33.02 DIST 49.93

78

SCOTT HILL BLVD

D82

350

BERNER

355

356

T@44 BS 82

FS 359 3/4" REBAR UP 0.2'

HZ & 175.49.39 DIST 123.255

D 44 (658/65)

LAKE SHORE DR.

359

T@48 H15.22 BS 44 @ 5.32

FS 49 @ 5.10

HZ & 129.09.51 DIST 158.890

FS 360 1/2" IP FLUSH

HZ & 8.33.00 DIST 116.808

360

D 48 (658/69)

D 49 (658/69)

79/677

1084 BELLINGHAM

TS16

P. CLOUDY 50'S 11/19/2021 RSP

2997

FILE: 1084 TRAV 11-10-21

CP

 $\pi @ 51 | H1 = 5.07$ BS 73 @ 5.18

FS 83 @ 5.18 (MAG/SET)

HZ & 186.03.20 DIST 343.601

 $\pi 51 / BS 83 / FS 73$ HZ & 173.56.40 $\pi @ 83 | H1 5.18$ BS 51 @ 5.07

FS 73A @ 5.18 (73)

HZ & 358.09.09 DIST 494.038

FS 84 @ 5.32 (MAG/SET)

HZ & 181.55.44 DIST 507.836

 $(\pi 83 / BS 84 / FS 51$ HZ & 178.04.16)

- FS 361 1" LI IRON W/PIN IN MIDDLE

HZ & 193.25.25 DIST 186.145

- FS 362 DH/FND

HZ & 208.15.26 DIST 92.166

- FS 363 3/4" REBAR DOWN 0.4'

HZ & 231.40.37 DIST 51.288

80
73

ROGER ST.

INDIAN RUN RD

51

BUFFY RD.

HSE #27

363 ○

HSE #29

362 ○

HSE #37

361 ○

83
UP #5
3.2'

HSE #57

84 △

81/611

1084 BELLINGHAM

TS16

P. CLOUDY 50'S 11/10/2021 RIF

2997

CP

TC 84 HI=5.32 BS 83 @ 5.18

FS 85 @ 5.09 (MAG/SET)

HZ & 172.13.24 DIST 200.423

(TC 84/BS 85/FS 83A HZ & 187.46.36)

- FS 364 1" IP UP 0.5' LEAN NE'LY 0.15 (5.1)

HZ & 18.48.56 DIST 62.248

- FS 365 1 1/2" IP UP 1' (0.15)

HZ & 168.53.58 DIST 144.219

- FS 366 1/2" REBAR DOWN 0.2 (5.4)

HZ & 186.57.44 DIST 176.051

TC 85 HI=5.09 BS 84 @ 5.32

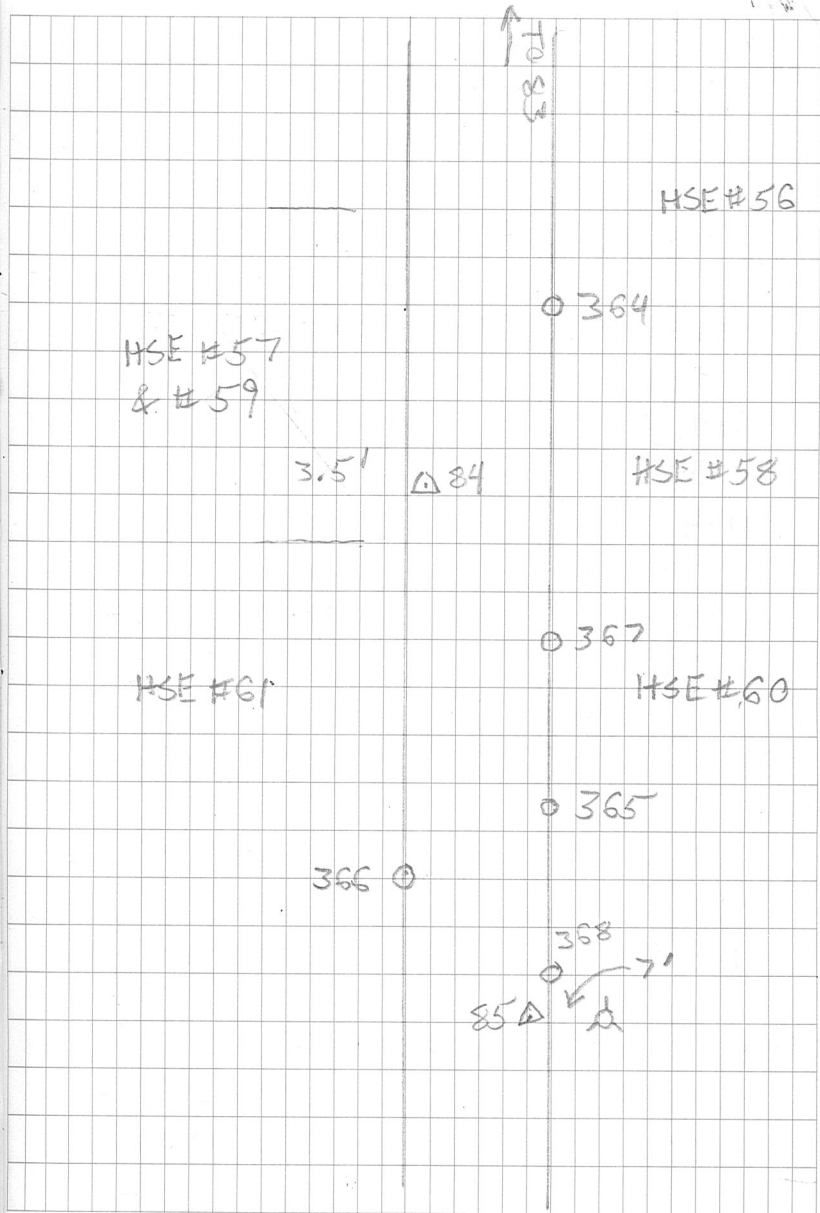
- FS 367 1 1/2" IP FLUSH/MANGLED

HZ & 7.37.52 DIST 106.340

- FS 368 1" IRON ROD UP 0.2 BENT

HZ & 30.45.55 DIST 7.814

82



83/67

1084 BELLINGHAM

TS16
2997

CLEAR 30'S

11/18/2021

RTF
CP

FILE: 1084-11-17-21.

T@84 H1 5.29 BS 85 @ 6.5

STK PT

STORE PT

11144

11149 NF

11143

11150 NF

11142

11151 COR CLF

11141

11152 COR CLF

11139

11153 NF

11140

11154 NF

11138

11155 NF

T@83 H1=5.56 BS 84 @ 6.09.0

STK PT

STORE PT

11135

11156 STRKND

11133

11157 NF

T@51 H1=5.09 BS 83 @ 5.56

STK PT

STORE PT

11132

11158 NF

INDIAN RUN RD

84/8

T@83 H1 5.56 BS 51 @ 5.10

- FS 369 3/4" POINTED I. PIN FLUSH

HZ \$ 177.51.41 DIST 150.45

- FS 370 DH/FND

HZ \$ 327.36.04 DIST 81.127

HSE 46

O 369

O 362

HSE 40

A83

HSE 29

HSE 36

X 11156

HSE 27

85/677

ROGER ST BELLINGHAM

TS16

CLEAR 30'S

11/24/2021

RTR

2997

FILE: 1084-11-24-21

CP

A@70 H1=5.41 BS 13@5.26

FS 371 DH/FND (LOOSE)

H2 & 257-42-19 DIST

11159 STR FND

11160 & 11161 ST/WALL

11162 MFLY 13

A@75 H1=4.97 BS 76@5.10

11163 - 11180 wet flags

11181 MFLY 76

86
1001

85/677

ROGER ST BELLINGHAM

TS16

CLEAR 30'S

11/24/2021 RTR

2997

FILE: 1084-11-24-21

CP

A@70 HI=5.41 BS 13@5.26

FS 371 DH/FND (LOOSE)

HZ 257-42-19 DIST

11159 STR FND

11160 & 11161 ST/WALL

11162 MFLY 13

A@75 HI=4.97

BS 76@5.10

11163 - 11180

wet flags

11181 MFLY 76

86

87
6/17

BELLINGHAM LAKESHORE DRL

TS16

CLOUDY 40'S 2/21/2022 RTF

2997

CP

FILE: 1054-2-22-22

 $\pi @ 44 (P.78) HI = 5.26 BS 82 @ 8.7$

11187 MAG/SET

LOC 11188-11201

11202 MFLY 48

 $\pi @ 11187 BS 44$

LOC 11203-11228

11229 MFLY 82

 $\pi @ 8 | HI = 5.21$

BS 82 @ 5.1

LOC 11230-11238

88

89/677

BELLINGHAM LAKE SHORE DR.

7516

CLEAR 40'S 3/11/2022 RTF

2997

FILE: 1084-3-11-22 CP
PR

TC 48 HI=5.32 BS 44 @ 5.58

FS 86 (MAG SET) @ 5.42

HZ & 179.22.04 DIST 206.966

FS 372 @ 5.1 (ALSO #6849)

CONC BND BROKEN

HZ & 359.29.27 DIST 453.44

FS 373 @ 7.50 REBAR FND $\frac{7}{8}$ " UP 0.1'

(ALSO #7301)

HZ & 3.40.04 DIST 266.059

FS 87 (MAG SET) @ 5.35

HZ & 0.30.33 DIST 261.440

FS 374 @ 8.4 CAPPED REBAR VP 0.5'

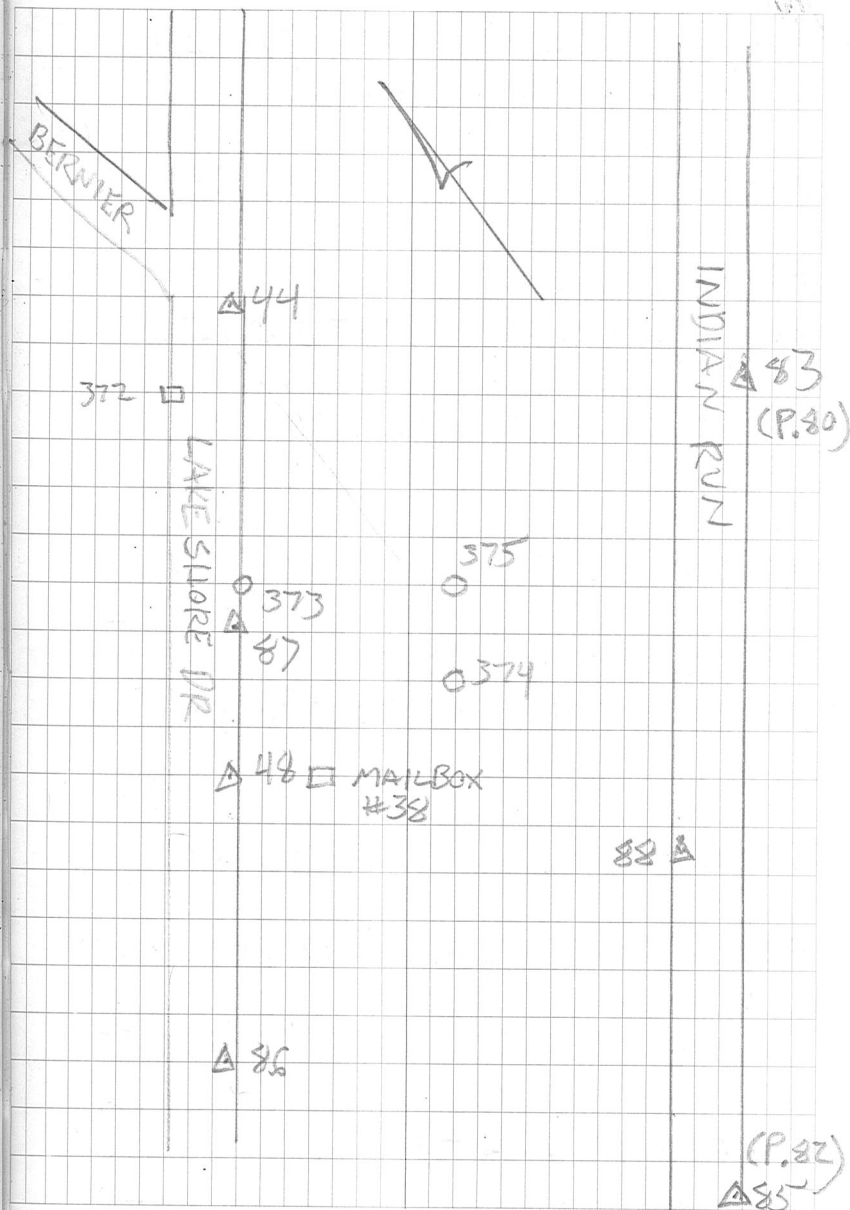
HZ & 40.34.40 DIST 218.876

TC 87 HI=5.35 BS 48 @ 5.32

FS 44 @ 5.58 HZ & 179.00.30 DIST 277.488

FS 375 @ 5.5 CAPPED REBAR VP 0.3'

HZ & 267.31.56 DIST 139.400



9/6/77 BELLINGHAM LAKE SHORE DR
TS16 CLEAR 40'S 3/11/2022 RTF
2997 FILE: 1084-3-11-22 CP
PR

TC86 HI=5.42 BS 48 @ 5.32

FS 88 (MAG SET) @ 5.48
HZ & 69.44.08 DIST 309.723

11239 CL END CONC RET WALL
11240 " " " "

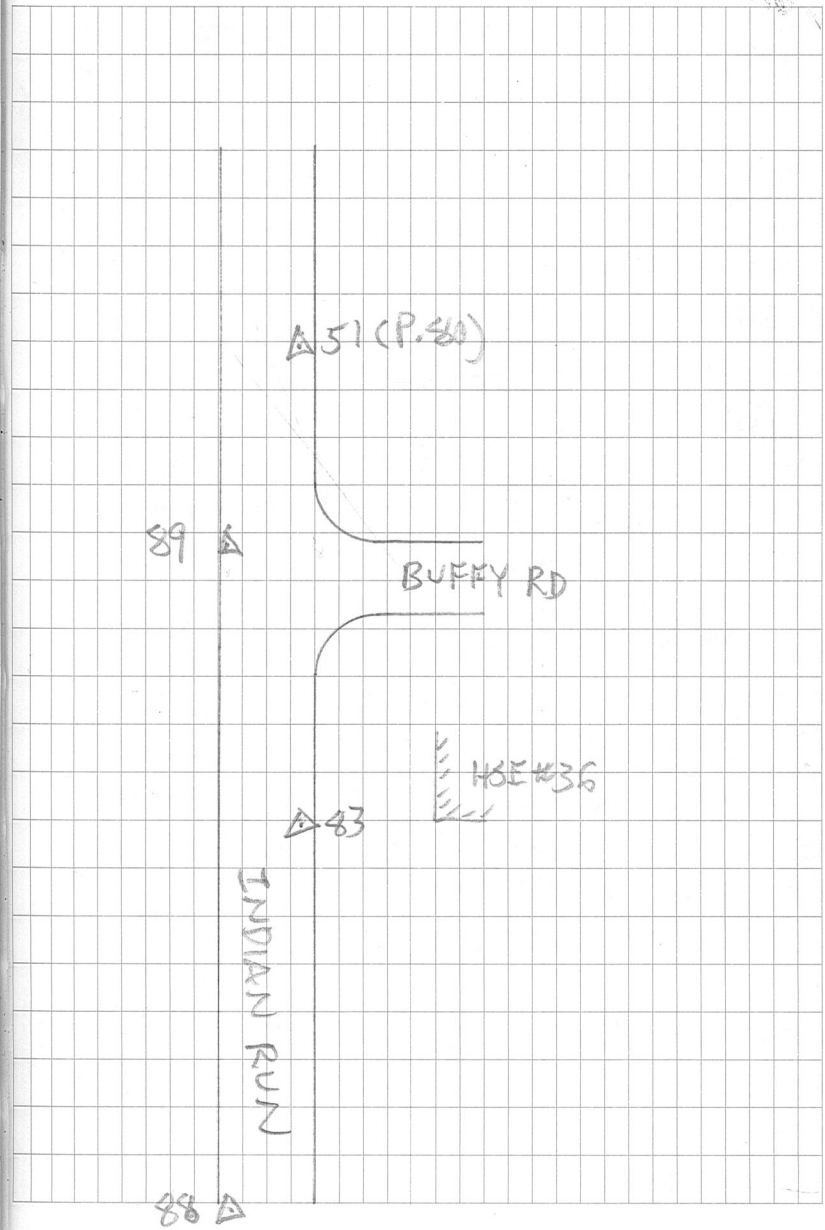
TC88 HI=5.48 BS 86 @ 5.41

FS 83 @ 4.76 HZ & 113.16.35 DIST 443.977
FS 85 @ 5.40 HZ & 285.51.03 DIST 264.322

TC 83 HI=4.76 BS 88 @ 5.48

FS 51 @ 5.25 HZ & 177.30.10 DIST 343.599
FS 89 (MAG SET) @ 5.04
HZ & 173.08.33 DIST 281.860

131
(CONT. P. 107)



93/67

PLAINVILLE

TS16
2997

P. CLOUDY 50'S 11/20/2020

RTF
CP

FILE: 1085_PLAINVILLE

T@500 HI=5.22 BS503@5.42

STK508 OUT 0.11/RIGHT 0.03

STORED @ #1000

SHOOT #503 AS #100

ALL BOUNDS LOCATED WITH 2 SETS OF ANGLES

T@503

BS 100

FS 101 @ 5.40 HZ& 58.22.10 DIST 78.497

FS 102 @ 5.40 HZ& 84.16.29 DIST 133.272

FS 103 @ 5.40 HZ& 66.16.55 DIST 169.500

FS 104 @ 5.40 HZ& 331.34.18 DIST 64.839

FS 105 @ 5.40 HZ& 330.11.09 DIST 153.749

FS 106 @ 5.40 HZ& 83.28.36 DIST 11.287

FS 107 @ 5.40 HZ& 223.39.12 DIST 66.425

FS 108 @ 5.40 HZ& 342.47.52 DIST 134.714

FS 1 @ 5.45 HZ& 175.36.48 DIST 449.288

T@500 BS 1 FS 100

HZ& 184.23.12 DIST 134.714

T@1 HI=5.45 BS500@5.22

FS 2 @ 5.25 HZ& 183.29.59 DIST 387.228

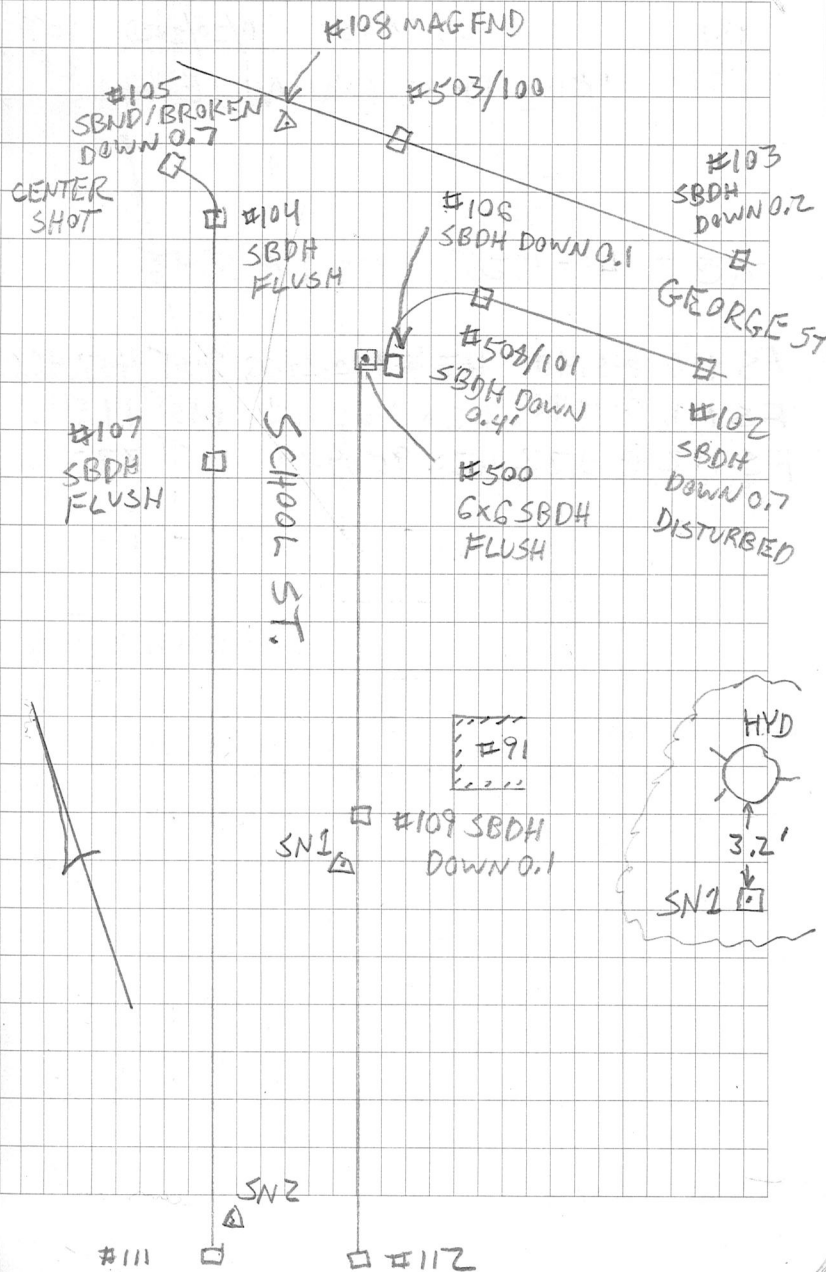
T@1 BS 2 FS 500

HZ& 176.30.00 DIST

FS 109 @ 5.40 HZ& 218.03.53 DIST 10.460

SCHOOL ST./GEORGE ST.

94



95/67

PLAINVILLE

RSIS
#2997

P. CLOUDY 50'S 11/20/2020
FILE: 1085 - PLAINVILLE

RTE
CP

$\pi @ 2$ HI = 5.25 BS 1 @ 5.45

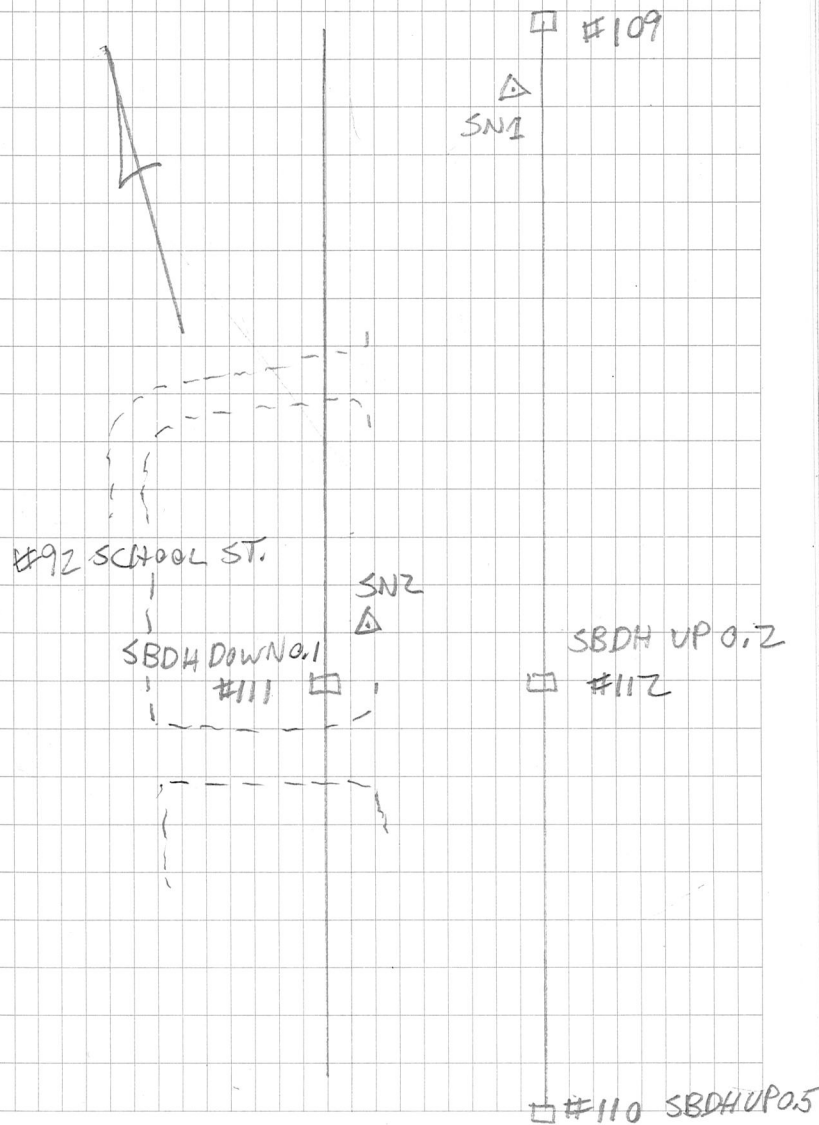
FS 110 @ 5.40 HZ \times 170.24.06 DIST 407.466

FS 111 @ 5.40 HZ \times 240.27.12 DIST 14.543

FS 112 @ 0.32 HZ \times 95.09.14 DIST 37.356

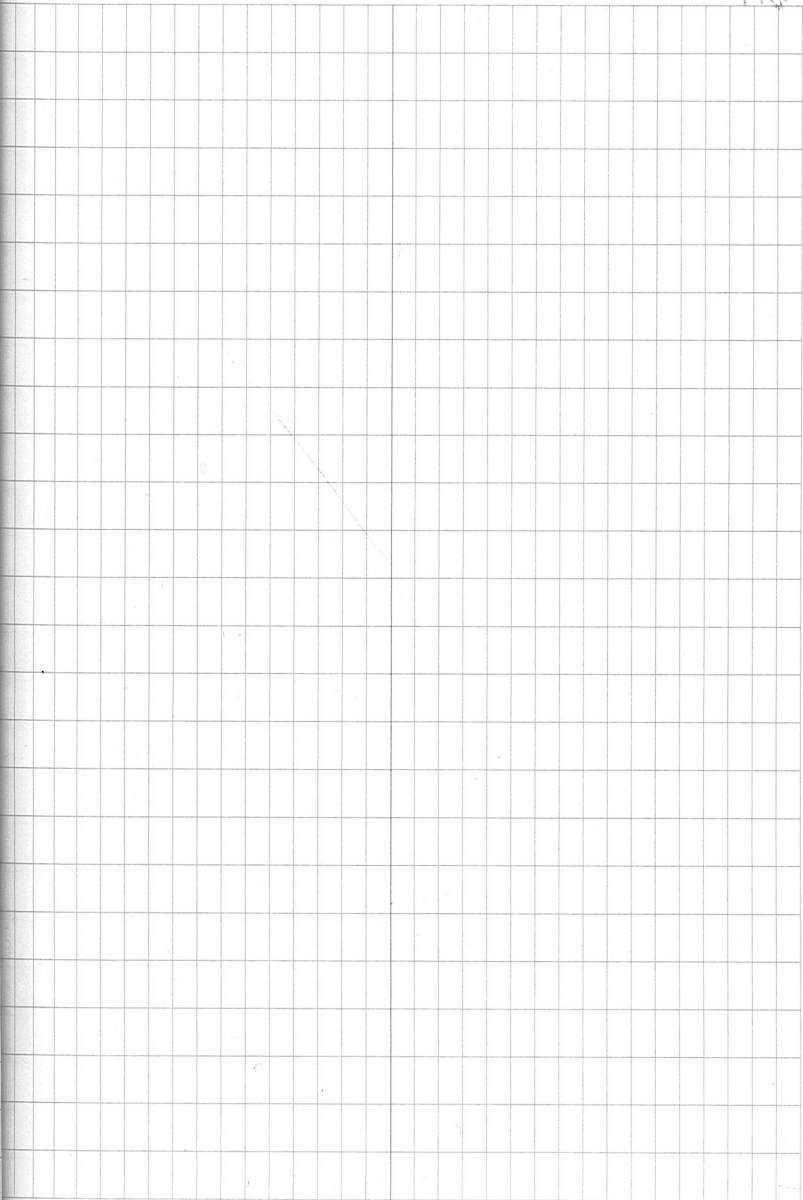
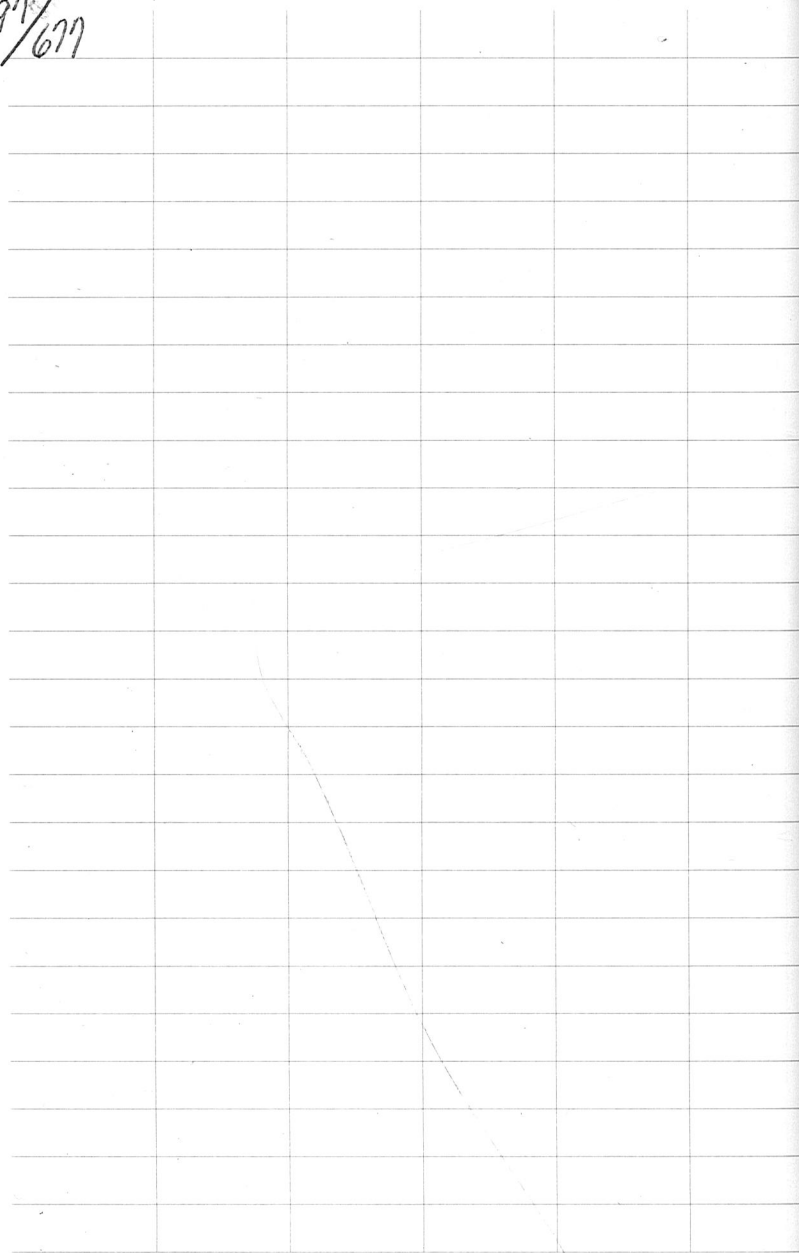
SCHOOL ST

96



97/677

98



99/107

WEYMOUTH

TS16
8167

CLOUDY 80'S 7/1/2021

FILE: 1089-CALC_7.1.21

TC 530 SBDH H1 4.98

BS 529 SBDH 5.35

FS 1 (SCRIBE 101) 5.29

TC 530 BS 1

STK PT	STORE PT	
534	9000	6x6 SBDH BROKEN
536	9001	6x6 SBDH
537	9002	" "
539	9003	IN BIT WALK
533	9004	IN BIT DW
	9005	IN 28" MAPLE
538	9006	6x6 SBDH

TS16
8167

7/1/2021

FILE 1089 LOCATION

CP
RFTC @ PNT1 $\overset{00-00}{\rightarrow}$ ON SBDH 530

D=271.4305

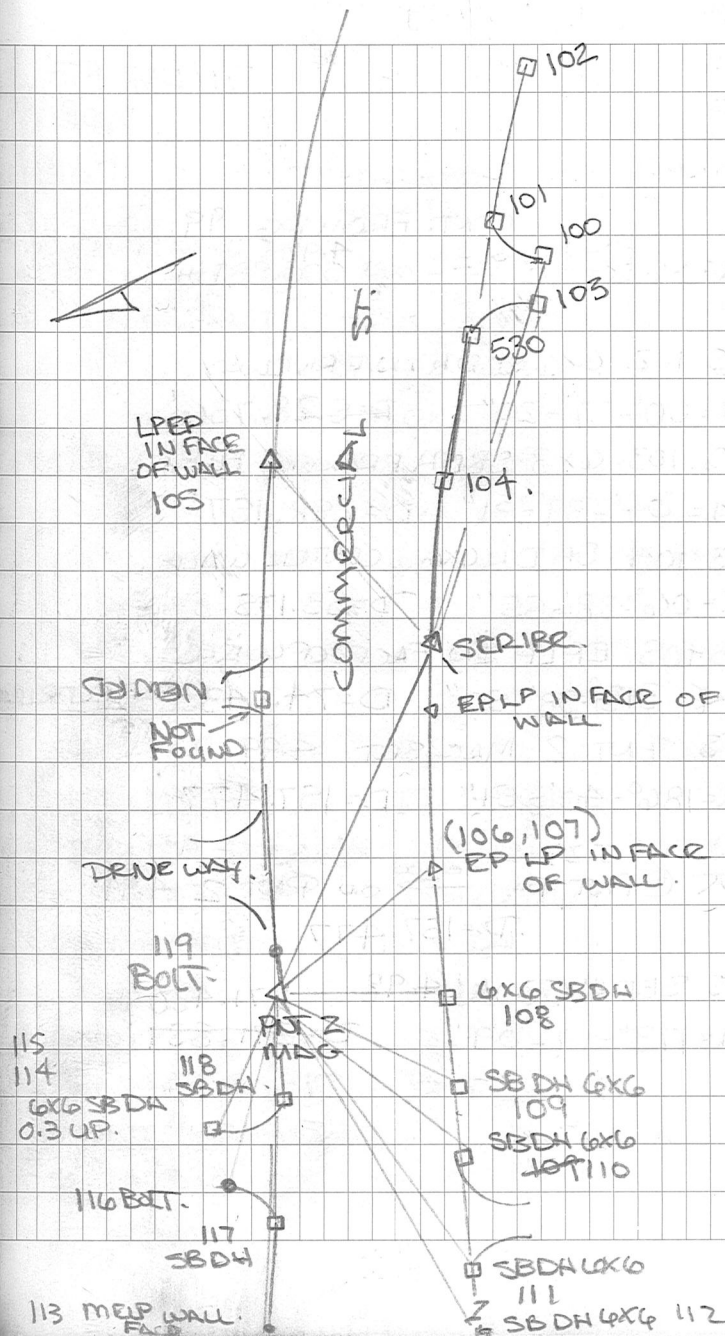
FS 100 6x6 SBDH FLUSH

A=04°-00'-16" D=337.9240'

FS 101 6x6 SBDH 0.1 DN.

A=35°-39'-45" D=361.993'

100



101/6M

WEYMOUTH

TS16

7/1/2021 RTF

2997

CP

8167

5.29 CONT. FROM PG. 99
 Scribe $\overset{\infty}{\infty}$ ON 4.98
 $\overset{\infty}{\infty}$ ON 530 SBDH

FS. 102 6x6 SBDH IN DRIVEWAY.

 $\angle = 00^{\circ}-37'-20''$ D=528.736'

FS. 103 6x3 SBDH BROKEN FLUSH.

 $\angle = 04^{\circ}-39'-31''$ D=298.157'

FS 104 SBDH 6x6 CENTER WALK.

 $\angle = 06^{\circ}-38'-55''$ D=53.175'

FS 105 EPLP IN FACE OF WALL.

 $\angle = 313^{\circ}-33'-57''$ D=74.043 REFLECTORLESS

FS PNT 2 MAG SET 4.99

 $\angle = 186^{\circ}-40'-51''$ D=157.477'

5.29

K @ PNT 1 $\overset{\infty}{\infty}$ ON PNT 2 4.99

D=157.477

FS SBDH 530A 4.98 271.430'

 $\angle = 173^{\circ}-19'-09''$ D=271.859'

WEYMOUTH

102

TS16

7/6/2021

8167

71° OVERCAST
HUMID.RTF
CP

1089 CALL 7-1-2021 1089 LOCATION (4.90)
 (5.03)

K @ PNT 2 MAG $\overset{\infty}{\infty}$ ON PNT SCRIBE

D=157.478'

FS TO SBDH 530B 6x6 SBDH CENTER FLUSH
 (9.45) $\angle = 355^{\circ}-46'-18''$ D=308.

428.249'

FS 106 LEAD PLUG PIN. (0.00) REFLECTORLESS

 $\angle = 50-15-50$ D=56.773

FS 107 MELP. (0.0) HD TARGET

 $\angle = 50^{\circ}-15'-26''$ D=56.756'

FS 108 SBDH 6x6 (0.40) DN (5.4)

 $\angle = 111^{\circ}-18'-10''$ D=69.070'

FS. 109 SBDH 6x6 0.1 DN. (5.4)

 $\angle = 133^{\circ}-43'-18''$ D=120.956'

FS 110 SBDH 6x6 0.4 DN. (1.45)

 $\angle = 140^{\circ}-07'-34''$ D=163.887'

FS 111 SBDH 6x6 FLUSH 0.2 DN (5.4)

 $\angle = 144^{\circ}-43'-17''$ D=256.112'

FS 112 SBDH 6x6 0.1 DN. (5.4)

 $\angle = 147^{\circ}-10'-05''$ D=392.975'

103/6/11

WYMOUTH

TS16

7/6/2021

8167

OVERCAST 82°

CP
RTF

T @ 2 (S.03) → ON 1 (S.90)
D = 157.478'

FS 113 LEAD PLUG PIN FACE OF WALL

 $\angle = 158^{\circ} - 07' - 27''$ D = 257.786

FS 114 SBDH 6x6 0.3 UP (S.1)

 $\angle =$ D = 103.375'

FS 115 SBDH 6x6 0.3 UP (S.1)

(S.03) (4.90)
T @ 2 MAG → ON 1 SCRIBE

FS 116 SBDH 6x6 0.3 UP (S.1)

 $\angle = 189^{\circ} - 41' - 52''$ D = 103.381'

FS 116 BOLT AT WALL BASE (S.1)

 $\angle = 172^{\circ} - 05' - 12''$ D = 159.8648'

FS 117 SBDH 6x6 FLUSH (S.4)

 $\angle = 161^{\circ} - 02' - 18''$ D = 191.139'

FS 118 SBDH 6x6 FLUSH (S.4)

 $\angle = 169^{\circ} - 36' - 47''$ D = 47.800'

FS 119 BOLT DIT. BASE OF WALL (S.4)

 $\angle = 324^{\circ} - 47' - 36''$ D = 24.162'

104

TS16

7/13/2021

8167

OVERCAST 70°

CP

RTF

FILE: 1089 LOC. 7.13.21

D = 271.420'

T @ PNT (10530) → ON SCRIBE (1)
(S.31) SBDH FLUSH (S.16)

FS MAG PNT 3 (S.32)

 $\angle = 180^{\circ} - 44' - 52''$ D = 696.433'

T @ PNT (10530) → ON PNT 3

SBDH (S.31) MAG (S.32)

D = 696.433'

FS = SCRIBE (1A) (S.16)

 $\angle = 179^{\circ} - 15' - 08''$ D = 271.433'

(S.32)

(S.31)

T @ PNT 3 MAG → ON PNT 10530 SBDH

D = 696.433'

FS DH WALK $\angle = 97^{\circ} - 25' - 09''$ D = 31.493' 120 (S.4)FS DH SB $\angle = 380^{\circ} - 06' - 25''$ D = 157.579' 121 (S.4)FS EPLP $\angle = 209^{\circ} - 01' - 20''$ D = 417.303' 122 (S.4)FS SBDH $\angle = 200^{\circ} - 46' - 59''$ D = 417.322' 123 (S.4)

FS DH 124, 125, DH IN CURB (SB NOT FND)

FS SCRIBE 1B $\angle = 359^{\circ} - 47' - 26''$ D = 967.851' (1.67)

(CONT. ON NEXT PAGE)

105/677

SB
DH

7/13/2021

CP
RTE.

106

123 FLUSH

EPLP 122

120

DRAIN
WALK

MAG.
NL 3

NOT FND

NFND

121

SB BACK OF SIDEWALK

ST

COMMERCIAL

FISKE AVE.

10530
SB DH

1 SCRIBE

107/677

108

131/677

BELLINGHAM BUFFY RD.

TS16 CLEAR 40'S 3/11/2022 RFB
 2997 FILE: 1084-3-11-22 CP
 PR

TEST 9 H1 = 5.04 BS 83 @ 4.76

FS 51^A @ 5.25 HZ 203.16.07 DIST. 66.123

FS 376 1/2" REBAR BASE SHOT 0.32
 HZ 217.46.16 DIST 48.019

FS 377 CBDH 6x6 FLUSH 5.40
 HZ 268.34.36 DIST 57.379

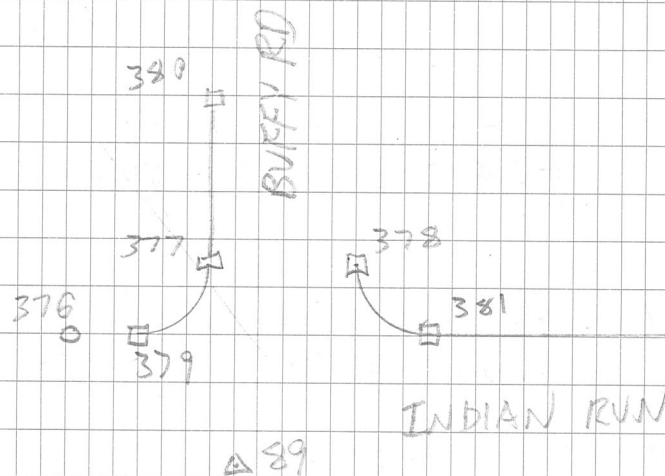
FS 378 CBDH 6x6 FLUSH 5.40
 HZ 316.03.08 DIST 58.205

FS 379 CBDH 6x6 VP 0.5' 0.32
 HZ 221.31.56 DIST 43.766

FS 380 CBDH 6x6 FLUSH 5.40
 HZ 270.54.06 DIST 118.051

FS 381 CBDH 6x6 FLUSH 5.40
 HZ 339.52.35 DIST 70.949

132



133/677

BELLINGHAM SCOTT HILL BVD

TS16

CLEAR 40'S

3/14/2022

RTP

Z997

FILE: 1084-3-14-22

CP

PR

K@8 HI=5.60 BS70 @ 3.69

FS 90 (SN SET) @ 4.68
HZ# 359.41.33 DIST 635.615

STK CALC Z99 STORE 11241

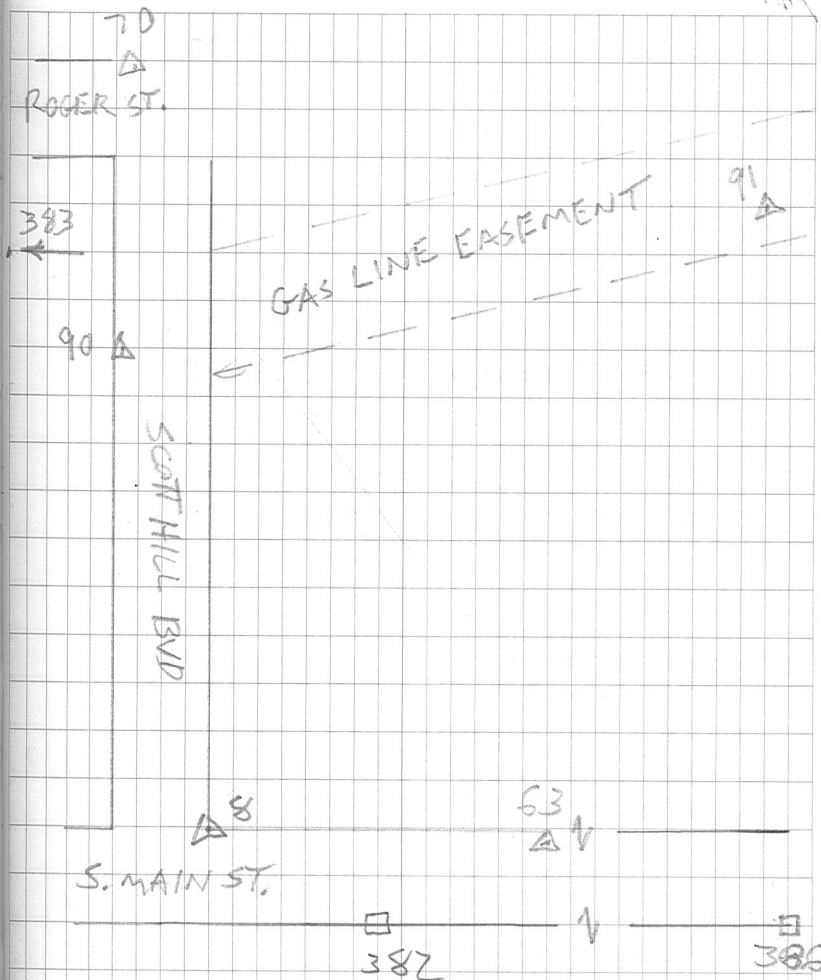
FS 382 6X6 SBDH DOWN 0.2' 5.10
HZ# 114.43.28 DIST 259.816FS 63 @ 5.10 (MAG FND)
HZ# 103.35.32 DIST 540.149

K@90 HI=4.68 BS8 @ 5.60

FS 70 @ 3.69 HZ# 181.12.08 DIST 218.443

FS 91 (SN SET) @ 5.15
HZ# 252.11.23 DIST 1018.661FS 383 REBAR FND 1/2" UP 0.1'
HZ# 121.59.50 DIST. 124.304

134



135/677

BELLINGHAM SCOTT HILL BVD

3/14/2022

RTF
CP
PR

TE91 HI=5.15 BS90 @ 4.68

FS 384 1" IP FLUSH 5.40

HZ \$ 283.45.22 DIST 61.116

FS 385 DH FND 5.10

HZ \$ 285.51.36 DIST 439.987

TE63 HI=5.54 BS8 @ 5.60

FS 386 6x6 SBDH DOWN 0.7' 5.10

HZ \$ 188.04.44 DIST. 317.964

TS16 P. CLOUDY 50'S 3/15/2022 RTF

2997 FILE:1084-3-15-22

CP
PR

TE392 HI=5.0 BS75 @ 5.4

FS 387 1.5" IP FLUSH

HZ \$ 257.06.04 DIST. 123.459

136

137/677

BELLINGHAM ROGER ST

138

TS16

P. CLOUDY 40'S 3/25/2022

2997

RTR

FILE: 1084-3-25-22

SEE P. 56 FOR SKETCH

$\pi @ 13$ HI = 5.33 BS 70 @ 5.10

11242 MFLY 76

11243-11246 OH

11247-11249 CONC PAD

11250 MFLY 76

$\pi @ 76$ HI = 5.19

BS 13 @ 5.10

11252-11254 OH

11255 MFLY 13

139/677

BELLINGHAM

TS 16 CLOUDY MIST 50° 3/31/2022 RTF
2997 CP
PR

FILE: 1084-3-31-22

TC 544 HI=5.18 BS 548 @ 5.33

FS 92 @ 5.08 HZ 11.42.11 DIST 107.09

FS 93 @ 5.44 HZ 18.47.53 DIST 52.256

FS 94 @ 5.40 HZ 20.39.40 DIST 276.609

FS 95 @ 5.54 HZ 178.58.18 DIST 165.001

FS 96 @ 4.14 HZ 179.42.15 DIST 63.578

TC 92 HI=5.08 BS 544 @ 5.18

FS 388 @ 5.40 1.5" IRON

HZ 84.49.12 DIST 163.886

389 2" FENCE POST 4' HIGH

TC 93 HI=5.44 BS 548 @ 5.33

FS 390 @ 6.10 1.5" IP UP 0.7' BASE SHOT

HZ 280.42.28 DIST 159.433

FS 391 @ 5.72 1" IP TOP CENTER

HZ 262.45.35 DIST 158.884

LAKE SHORE DR

140

TC 96 HI=4.14 BS 548 @ 5.33

FS 392 @ 5.40 3/4" I. ROD DOWN 1.5'

HZ 230.54.28 DIST 19.704

FS 393 @ 2.30 2" IP UP 2' BASE SHOT

HZ 264.36.11 DIST 141.05

TC 95 HI=5.54 BS 548 @ 5.33

FS 394 @ 8.55 1" IP UP 1.2' BASE SHOT

HZ 265.36.31 DIST 142.967

FS 395 @ 5.6 1" IP UP 0.2' TOP CENTER

HZ 265.45.57 DIST 142.833

FS 396 @ 5.4 3/4" I. ROD FLUSH

HZ 238.57.33 DIST 20.553

FS 397 @ 1.31 SPIKE FOUND

HZ 169.28.10 DIST 200.125

FS 398 @ 6.5 3/4" I. ROD FLUSH

HZ 111.03.10 DIST 108.873

FS 399 @ 5.4 7/8 I. Rod UP 0.2

HZ 129.53.56 DIST 44.716

TC 94 HI=5.40 BS 544 @ 5.18

FS 400 @ 5.40 CAPPED REBAR

HZ 237.25.16 DIST 81.888

141/677

BELLINGHAM

TS16 CLEAR 50'S 4/21/2022 RTK
2997 CP

FILE: 1084_4_21_2022 PR

π @70 HI=5.15 BS13 @ 5.33
FS 97 (MN SET) @ 5.47
HZ & 103.29.26 DIST 294.447

π @97 HI=5.47 BS70 @ 5.15
FS 81 @ 5.10
HZ & 199.07.21 DIST 522.278

FS 98 (MN SET) @ 5.29
HZ & 236.50.36 DIST 332.995
SHOTS ON ST/WALL 401-404

π @98 HI=5.29 BS97 @ 5.47
SHOTS ON ST/WALL 405-410

411 1" IRON PIPE 0.8 DOWN

FS 412 \angle 331°-15'-57" D=52.674'

FS 413 \angle 175°-59'-46" D=33.228'

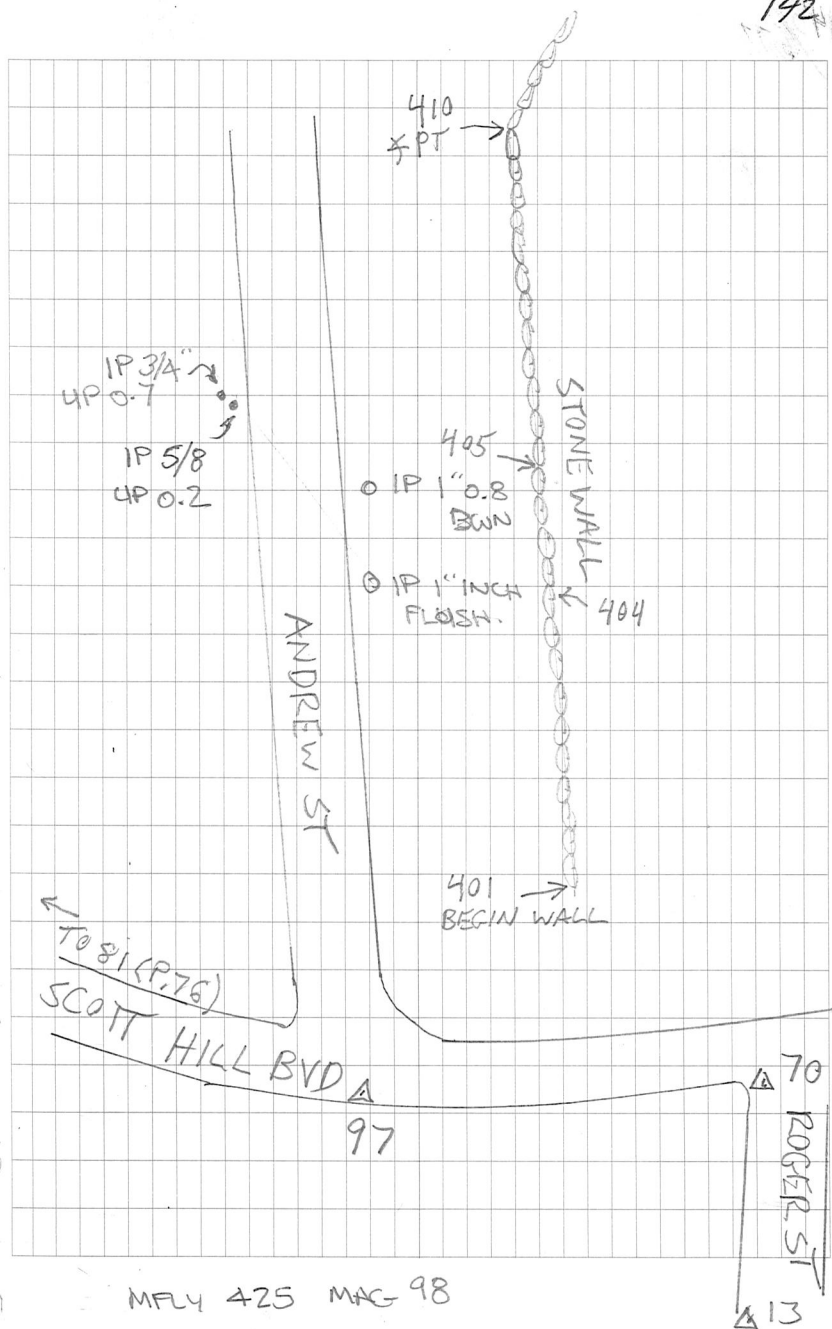
FS 414 \angle 176°-15'-09" D=33.051'

π @91 HI=4.88 BS90 @ 5.40

SHOTS ON ST/WALL 415-423

MFLY ON STR 90 424.

142



143/617 BELLINGHAM / FRANKLIN

TS 16 CLEAR 80'S 7/7/2023 RTF
2997 FILE: 1102 BND LOC CP
PR

* HELD RTK LOCATION ON STK 1 (1001)
FROM 7/6/23. ORIENTATE ON 1002
TO ESTABLISH STK 2.

Te1 HI=5.32 BS 2 @ 5.19 D=501.506

FS 3 @ 5.12 (SN/SET)
HZ 4 172.31.21 DIST. 591.538

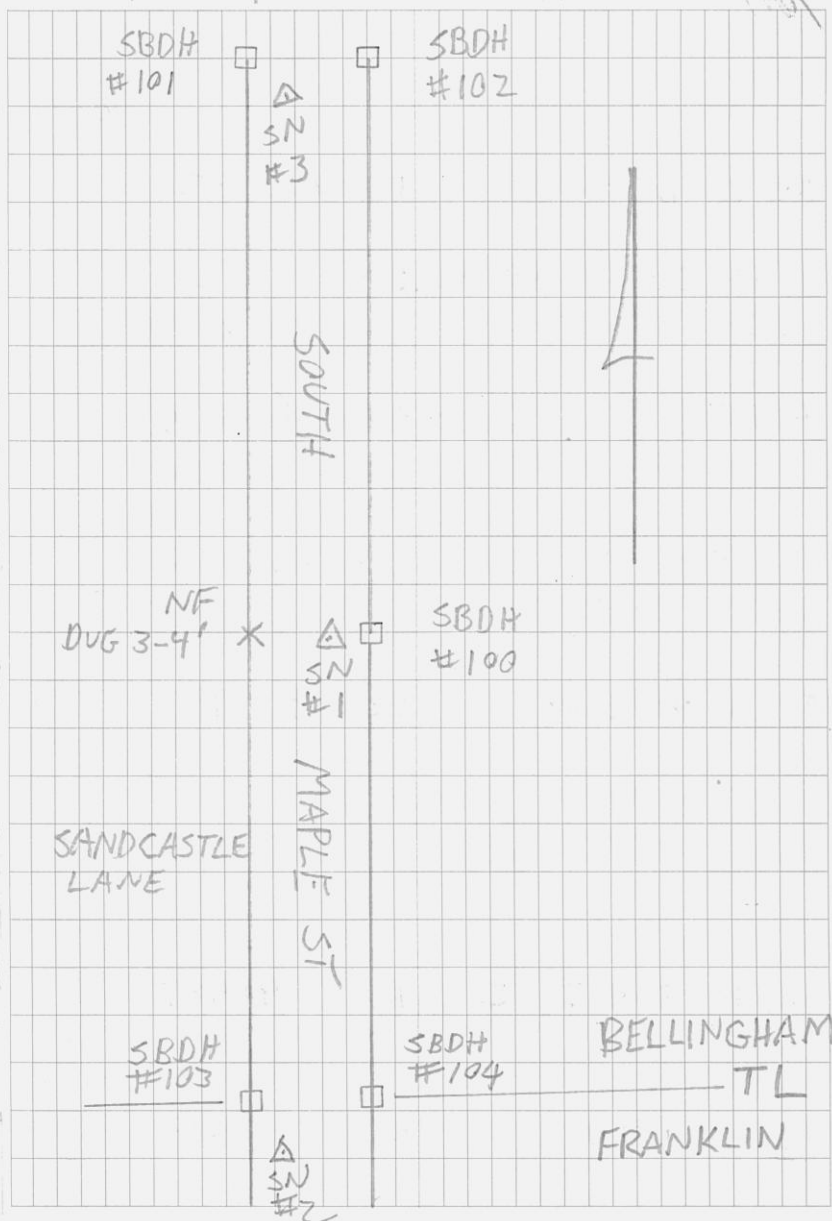
FS 100 @ 7.5 GxG SBDH FLUSH
HZ 4 274.10.56 DIST. 10.406

Te3 HI=5.12 BS 1 @ 5.32

FS 101 @ 5.4 GxG SBDH DOWN 0.4
HZ 4 130.11.22 DIST. 13.094

FS 102 @ 5.4 GxG SBDH FLUSH
HZ 4 261.28.32 DIST. 40.431

144
MAPLE / PROSPECT ST



145/677

FRANKLIN

TS16

2997

7/7/2023

RTE

CP

PR

A@Z H1=5.19

BS1@5.32

FS4@5.01 (SN/SET)

HZ# 169.56.22 DIST 269.692

FS103@5.4 6x6 SBDH DOWN 0.3

HZ# 340.38.49 DIST 36.521

FS104@5.4 6x6 SBDH DOWN 0.1

HZ# 44.50.37 DIST 53.765

A@4 H1=5.01

BS2@5.19

FS5@4.99 (SN/SET)

HZ# 187.54.50 DIST 394.203

FS105@5.4

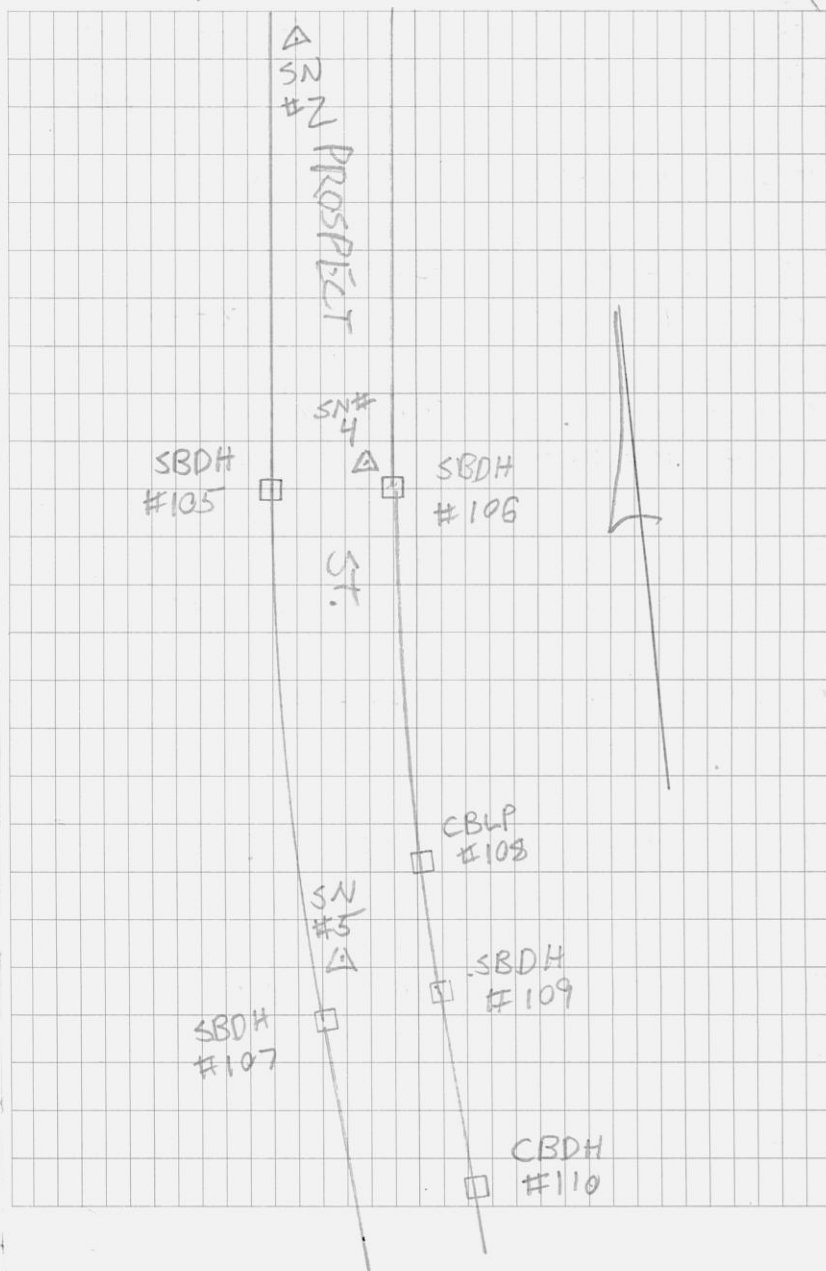
HZ# 274.27.12 DIST 41.487

FS106@5.4

HZ# 107.06.23 DIST 8.819

PROSPECT ST

146



147/677

FRANKLIN

TS16

7/7/2023

RTE

2997

CP
PR

Te 5 HI = 4.99 BS 4 @ 5.01

FND

FS 6 @ 4.90 (SN/SET)

HZ \times 168.50.21 DIST 663.225

FS 107 @ 5.4 6x6 SBDH DOWN 0.3

HZ \times 193.19.39 DIST 24.270

FS 108 @ 5.4 6x6 CBLP

HZ \times 3351.59 DIST 61.647

FS 109 @ 5.4 6x6 SBDH FLUSH

HZ \times 110.18.16 DIST 46.624

FS 110 @ 0.32 6x6 CBDH

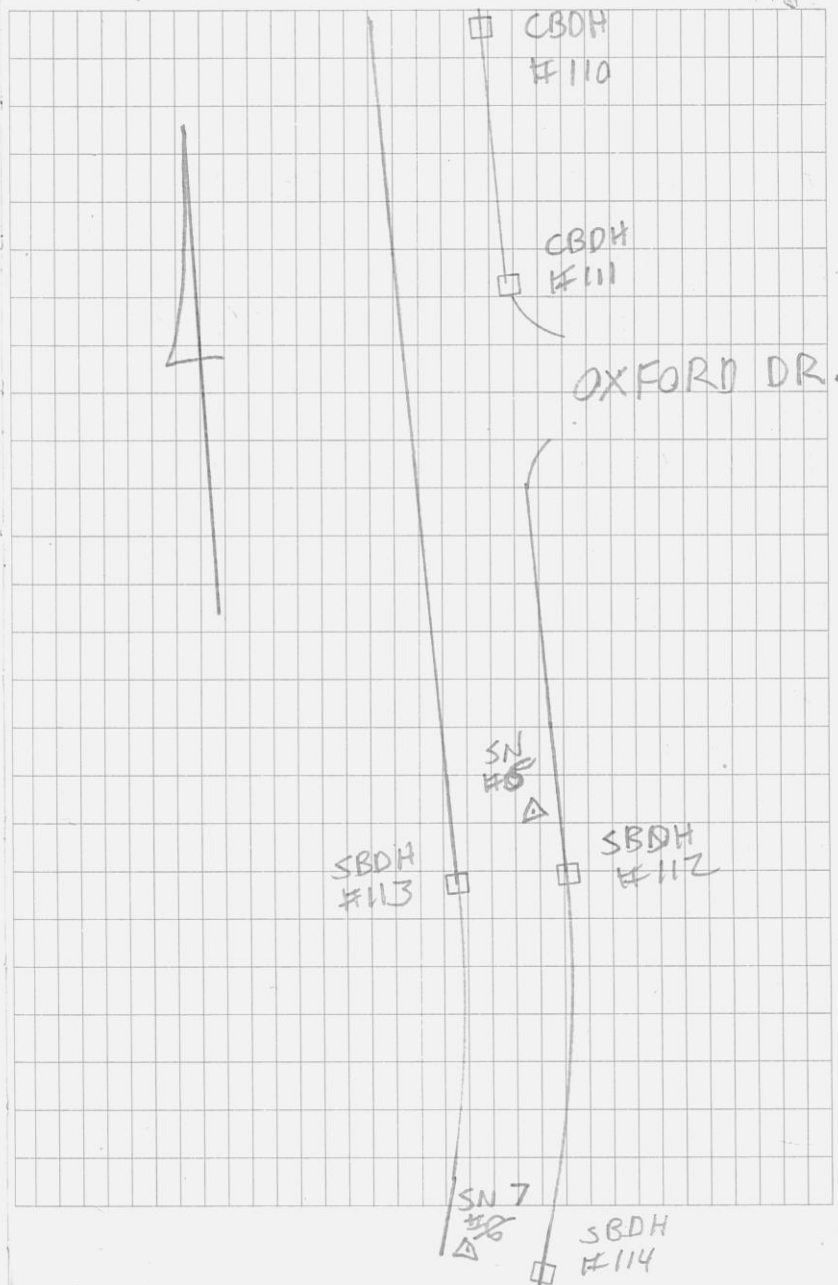
HZ \times 157.23.52 DIST 168.177

FS 111 @ 5.1 6x6 CBDH UP 0.8

HZ \times 165.19.04 DIST 384.456

PROSPECT ST

148



149/617
TS 16
2997

FRANKLIN

7/7/2023

RTE
CP
PR

π es N 6 HI = 4.90 BS 5 @ 4.99

FS 7 @ 5.39 (SN/SET)

HZ ~~7~~ 194.05.10 DIST 291.844

FS 112 @ 5.4 6x6 SBDH DOWN 0.7

HZ ~~7~~ 165.40.05 DIST 38.870

FS 113 @ 5.4 6x6 SBDH DOWN 0.7

HZ ~~7~~ 228.46.40 DIST 53.685

π @ 7 HI = 5.39 BS 6 @ 4.90

FS 8 @ 4.85 (SN/SET)

HZ ~~7~~ 173.37.04 DIST 283.738

FS 114 @ 5.4 6x6 SBDH DOWN 0.9

HZ ~~7~~ 91.40.48 DIST 43.542

π @ 8 HI = 4.85 BS 7 @ 5.39

FS 115 @ 5.4 6x6 SBDH DOWN 0.6

HZ ~~7~~ 96.36.04 DIST. 9.954

PROSPECT ST.

150



SN#7



SBDH #114
@ BASE OF LARGE PINE
PROBABLY PUSHED
↓ & ←

NF



SN
#8
△



SBDH #115

15/6/17

FRANKLIN

TS16
2997P: CLOUDY 80'S 7/19/2023 RIF
CP

FILE: 110Z LOCATION

T@4 HI=5.30 BS2 @ 5.15

FS 9 @ 5.53 GLM 14

HZ# 0.57.19 DIST. 298.663

FS 116 @ 5.4 GLM 15

HZ# 274.37.08 DIST. 34.102

T@9 HI=5.53 BS4 @ 5.30

FS 2 @ 5.15

HZ# 8.48.40 DIST. 29.355

FS 116^A @ 5.4

HZ# 6.32.51 DIST. 298.431

FS 10 @ 5.58 GLM 13

HZ# 276.25.22 DIST. 199.371

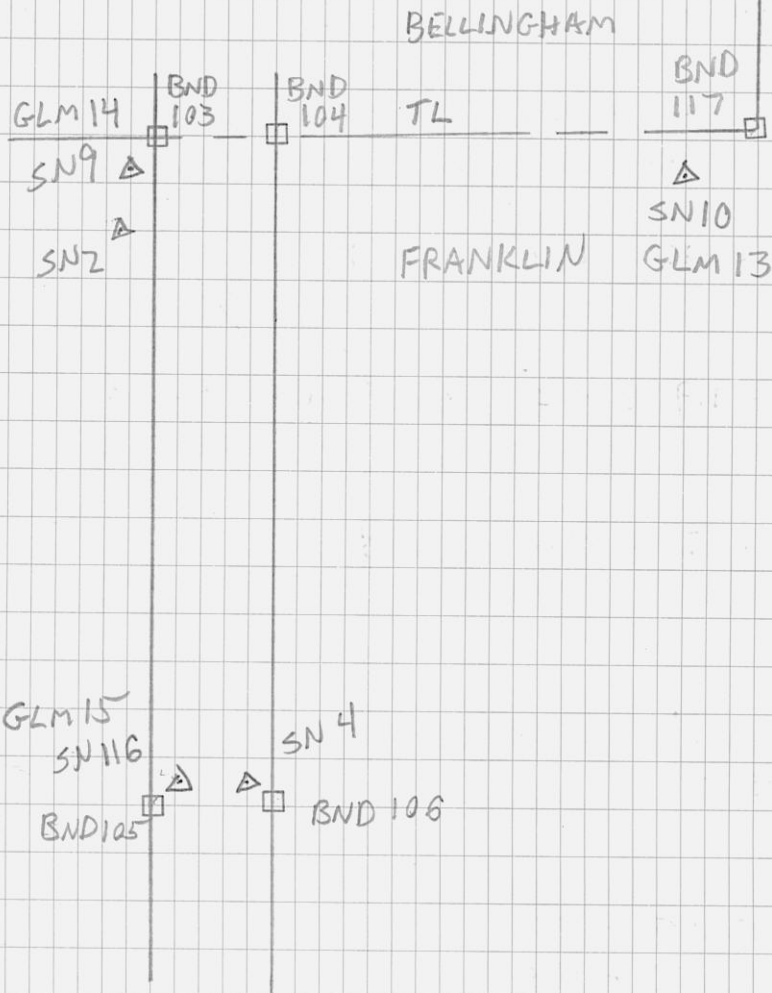
T@10 HI=5.58 BS9 @ 5.53

FS 117 @ 0.32 TL BND 10x12x4.5' H w/DH

HZ# 155.46.17 DIST. 27.660

PROSPECT ST.

152



153/677

TS 16
2997

FRANKLIN

P. CLOUDY 80'S 7/19/2023 RTK
CP

TK @ 5 HI = 5.45 BSG @ 5.27

FS 118 @ 5.4 GLM 16

HZ 308.34.10 DIST. 40.574

FS 119 @ 5.4 5x5 CBDH FLUSH

HZ 356.17.13 DIST. 374.221

FS 120 @ 5.4 GLM 1

HZ 357.40.30 DIST. 430.612

GS 16 FILE: 1102-7-19-23
2467

RTK OBSERVATIONS

SN 7 P. 150

SN 2 P. 144

SN 3 P. 144

PROSPECT ST.

154



155/677

FRANKLIN PROSPECT ST

TS 16 CLEAR 80'S 7/26/2023 RTF
2997 FILE: 1102 7-26-23 CP

(P. 152)

(P. 152)

π @ 116 HI = 5.14

BS 9 @ 5.32

FS 4 @ 0.32

H2~~x~~ 87.07.02 DIST 34.081

FS 121 (BND 106) @ 5.10

H2~~x~~ 89.40.04 DIST 42.718

π @ 4 HI = 4.75

BS 9 @ 5.32

FS 121A @ 5.10

H2~~x~~ 106.10.02 DIST 8.796

156

159/677

CURVE TABLES

HOW TO USE CURVE TABLES

Table I. contains Tangents and Externals to a 1° curve. Tan. and Ext. to any other radius may be found nearly enough, by dividing the Tan. or Ext. opposite the given Central Angle by the given degree of curve.

To find Deg. of Curve, having the Central Angle and Tangent: Divide Tan. opposite the given Central Angle by the given Tangent.

To find Deg. of Curve, having the Central Angle and External: Divide Ext. opposite the given Central Angle by the given External.

To find Nat. Tan. and Nat. Ex. Sec. for any angle by Table I.: Tan. or Ext. of twice the given angle divided by the radius of a 1° curve will be the Nat. Tan. or Nat. Ex. Sec.

EXAMPLE

Wanted a Curve with an Ext. of about 12 ft. Angle of Intersection or I. P. = 23° 20' to the R. at Station 542+72.

Ext. in Tab. I opposite 23° 20' = 120.87
 $120.87 \div 12 = 10.07$. Say a 10° Curve.

Tan. in Tab. I opp. 23° 20' = 1183.1
 $1183.1 + 10 = 118.31$.

Correction for A. 23° 20' for a 10° Cur. = 0.16
 $118.31 + 0.16 = 118.47 = \text{corrected Tangent}$.

(If corrected Ext. is required find in same way)
 Ang. 23° 20' = 23.33° + 10 = 2.3333 = L. C.

2° 19½' = def. for sta.	542	I. P. = sta.	542+72
4° 49½' = " " "	+50	Tan. =	1 .18.47
7° 19½' = " " "	543	B. C. = sta.	541+53.53
9° 49½' = " " "	+50	L. C. =	2 .33.33
11° 40' = " " "	543+	E. C. = Sta.	543+86.86
	86.86		

$100 - 53.53 = 46.47 \times 3' (\text{def. for 1 ft. of } 10^\circ \text{ Cur.}) = 139.41' =$
 $2^\circ 19\frac{1}{2}' = \text{def. for sta. } 542.$

Def. for 50 ft. = 2° 30' for a 10° Curve.

Def. for 36.86 ft. = 1° 50½' for a 10° Curve.

