

486

THE
CROSS SECTION LOOK

F.B. 486

Property of County Engineer

Address Registry of Deeds Bldg.
High St., Dedham, Ma.

Telephone 617-461-6129

INDEX

2-24 Survey for Topo at
" New Storage Bldg.
" Wollaston Rec. Facility

Inst.

Tape

Wthr & Temp.

Date

Crow

486/1

Proper

Addre

Teleph

This
50%
and i

2 / **BASLINE LOCATION**

Inst. 1486 Tape Wthr & Temp. Date Crew

Norfolk

CLUB

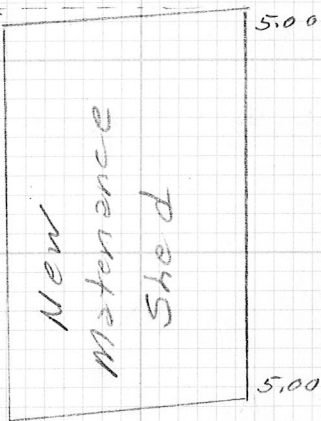
Conc. Pstho

dh Set In Water Table
Conc Fnd.

Storage Shed
Ch
Gate

AC Unit
AC Unit

0.72' off 90°



Baseline

Survey

0+0

1+0

2+0

3 / **Recreation Facility Nov, 1986**

Inst. Tape Wthr & Temp. Date Crew

County HOUSE

Morrissey
Crowley
Labeau
Carow

Conc Ent.

0 Hedges

Paved W

Walk

Roadway

5' Paved

Conc Curb

Paved

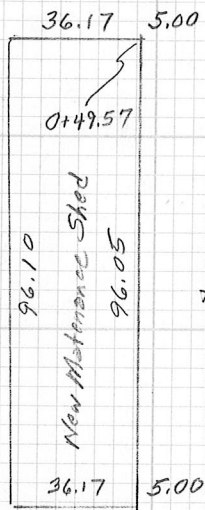
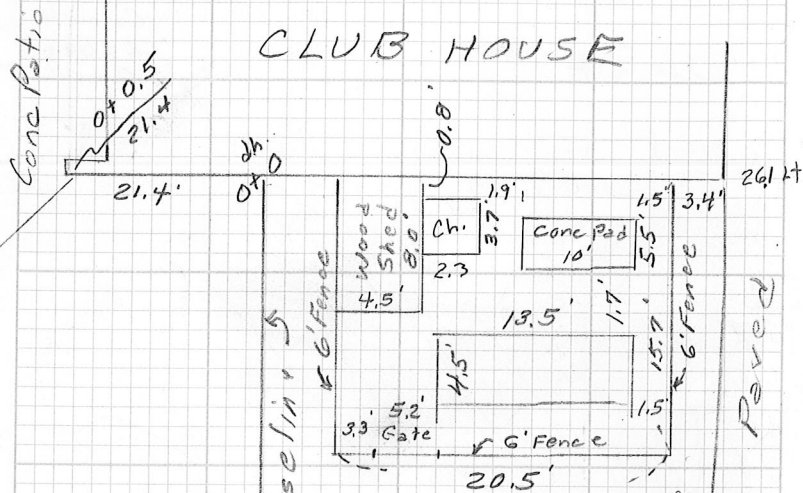
Practice Green

5' Walk

5' Walk

4/486 Detail

Inst. Tape Wthr & Temp. Date Crew



Recreation Facility Nov, 1986 5

Inst. Tape Wthr & Temp. Date Crew

Morrissey
Crowley
Lebeau
Carew



6/14/86 Level Run

Inst. Tape Wthr & Temp. Date Crew

Level Run for
X-sections

BM RR Spk In Root 4.12 $\frac{72.28}{\wedge}$ 68.16 ✓
30" Oak NB 401
Page 36

□ Square Set In Ledge 6.64 $\frac{74.22}{\wedge}$ 4.70 67.58 ✓
Sta 1+58 offset 60' Lt
Hold $\frac{67.60}{\wedge}$ Page 7

Top of Hydrant 7.29 $\frac{72.05}{\wedge}$ 9.46 64.76 ✓
near Practice Green
Sta 0+14 offset 186' Lt
~~(65.64)~~
~~NB 401 Page 38~~

BM RR Spk In Root 3.92 68.13 ✓
30" Oak (68.16)

Check on □ Sq In Ledge 4.49 67.56 ✓

Recreation Facility 7

Inst. Tape Wthr & Temp. Date Crew

BM Spk In 30" Oak 3.35 $\frac{71.51}{\wedge}$ 68.16 ✓

Top Spindle of Hyd 6.71 64.80 ✓

□ Sq In Ledge 3.91 67.60 ✓

TR m Curb 0.95 $\frac{61.58}{\wedge}$ 10.88 60.63 ✓

TR m Curb 2.26 $\frac{55.13}{\wedge}$ 8.71 52.87 ✓

~~BM~~
Front Flange Bolt 2.89 52.24 ✓
on Hyd @ Cor Evans & Ruthven Sts
(52.27)

← Diff Hydrant 11.8.39/19

81 X - Sections

Inst. 1486 Tape Wthr & Temp. Date Crew

70M Chisle Sq. In Lodge 8.25 7585 6760 B. M.

$$\begin{array}{r} 7585 \\ \hline \end{array}$$

1+58 Lt 60'
(Page 6)

0+0

Top of Water Table GS

0 0
3.80 4.6
72.05 71.3

Point of Conc. Patio GS

0+19

/

37 37
4.10 4.3
71.75 71.6

0+25

GS GS Ed Lawn Lawn
0 25 35.5 50 75

4.7 4.6 4.5 5.7 10.0
71.2 ~~70.3~~ 71.4 70.2 65.9
71.3

0+25

E.T.W BC TC Front Walk Back Walk
71.5 48 48 47.5 41.5
7.48 6.83 6.21 6.34 6.13
65.37 69.02 69.64 69.51 69.72

0+50

Conc Bldg Conc Apron
GS GS Dn Conc
0 5' 10.4 10.4
6.3 6.3 6.4 6.30
69.6 69.6 69.5 69.55

Finish Floor @ New Maintenance Bldg RR 6.31

69.54

RECREATION FACILITY @ VINCY 9
Inst. Tape Wthr & Temp. Date Crew

Conc Patio Edge of Conc. Patio - Planting on Slope

Conc Patio @ Bldg	Edge of Conc. Patio	TS	BS
19	37	50	85
3.88	4.10	5.5	14.3
71.97	71.75	73.4	61.6
		70.4	

Paved E. Bve Hedge GS
28 23
5.03 4.8
70.82 71.1

/

earth

GS	GS	GS	GS	GS	Ed Lawn	TS	BS
25	35.4	35.4	41.5	50	60	75	99
6.22	6.27	6.5	6.5	6.8	7.3	8.7	14.9
69.63	69.58	69.4	68.4	69.1	68.6	67.2	61.0
			69.4				

✓ ES 11/10/86

10 Oct / 486

Tape Wthr & Temp. Date Crew

75.85
A

0+50	ETW	On Pav	BC	TC	Front Walk
	54	50	35	35	34.5
	7.30	7.16	6.87	6.32	6.40
	68.55	68.69	68.98	69.53	69.45

End of Hedge 0+48 LT 26.5

Light Pole 0+47 LT 25'

TBM 17 Sq In Ledge 6.01 73.60 ✓
A1+58 LT 60
(Page 6)

0+55	GS	GS	Low Spot	GS @ Bldg
(Low Spot)	10	5	3	5
	3.8	3.7	4.1	4.4
	69.8	69.9	69.5	69.2

0+75	ETW	BC	TC	FW
	48	31.5	31.5	30.5
	6.27	5.71	5.19	5.22
	67.34	67.90	68.42	68.39

1 -	ETW	On Road	BC	TC
	53	50	36	35.5
	8.07	7.91	7.28	6.70
	65.54	65.70	66.33	66.91

11

Inst. Tape Wthr & Temp. Date Crew

Back Walk	GS
28.5	25
6.25	6.0
69.60	69.9

8.25 67.60 ✓

BW	GS	Low Spot	GS @ Bldg
24.5	10	0	5
4.97	4.2	4.1	4.3
68.64	69.4	69.5	69.3

FW	BW	GS	GS	GS	Low	GS @ Bldg
35.0	29.3'	25'	10'	0	4'	5'
6.82	6.57	6.5	4.4	4.1	4.4	4.2
66.79	67.04	67.1	69.2	69.5	69.2	69.4

12/486

Inst. Tape Wthr & Temp. Date Crew

$$\frac{73.61}{\wedge}$$

1+01 Lt 25' Base of Light Pole

	ETW	On Pavc	On Pavc	BC	TC
1+25	78	75	50	49.5	49
	10.41	10.28	9.05	9.05	8.38
	63.20	63.33	64.56	64.56	65.23

	GS	GS	GS	Low Spot	GS @ Bldg
1+25	25	10	0	4	5
	5.4	4.3	4.2	4.4	4.1
	68.2	69.3	69.4	69.2	69.5

	BC	TC	Fin	BW
1+11	40.5	40	39.5	34.0
Change in Slopes & Int of Walks	8.00	7.31	7.48	7.12
	65.61	66.30	71.13	66.59
			66.13	66.49

Conc Pad for Bench	1+34.5	Lt 8'	RR 4.20	69.41
	1+35	Lt 15.5	RR 4.23	69.38
	1+44	Lt 8'	RR 4.19	69.42
	1+44.5	Lt 15.5	RR 4.20	69.41

Practice

	Green	Edge Green	Edge Apron	GS
0+50	75	72	60	
	3.3	3.2	4.0	
	70.3	70.4	69.6	

Inst. Tape Wthr & Temp. Date Crew 13

check
shot
offset

FW	BW	F.P. Paved Walk	E.P.
48.5	42.5	30.5	29
8.54	8.14	6.38	6.10
65.07	65.47	67.23	67.51

Edge Pavc	GS	GS	Low Spot	GS @ Bldg
29.5	26	16	10	0
6.92	6.8	4.8	4.4	4.3
66.69	66.8	68.8	69.2	69.3
			69.2	69.2

RR
Corner of Bldg 0+0 Lt 26.1 Walk
2.18 71.13

Conc Ent 0+0 Lt 28' 1.31 72.30

Fin Floor Club House 1.12 72.49

✓ ES 11/10/86

14/486
 Inst. Tape Wthr & Temp. Date Crew
 Practice Green 73.61 ✓
 Edge Green Edge Apron GS GS
 1- 104.5 100.5 75 60
 4.3 4.2 5.9 7.4
 69.3 69.4 67.1 66.2
 TBM 2.59 to ledge 5.47 73.07 ✓

Apron
 GS GS Top Conc
 1+45.5 0 5 9 9.2
 3.6 3.6 3.7 3.46
 69.5 69.5 69.4 69.61
 GS GS
 1+45.5 38 41.5
 3.8 3.6
 69.3 69.5

ETW OnPave BC TC
 1+50 122 100 91 90
 12.22 11.50 11.22 10.56
 60.85 61.57 61.85 63.51
 62.51
 Paved Walk E. Pave GS GS GS
 26.5 25 0 25
 3.85 3.7 3.8 4.1
 69.22 69.4 69.3 69.0

Cor of concrete for bench
 1+53 Lt 7 RR 3.68 69.39
 1+53 Lt 16.7 3.64 69.43
 1+61 Lt 7.5 3.71 69.36
 1+61 Lt 17 3.66 69.41
 Cor of P22 1+74 Lt 9.5 RR 3.94 69.13

15
 Inst. Tape Wthr & Temp. Date Crew
 6.01 67.60

Earth Apron
 Top Conc GS GS Top Conc Top Conc
 17.5 18 25 25.5 37.5
 3.51 3.9 3.8 3.48 3.56
 69.56 69.2 69.3 69.59 69.51

FW BW BS OS TS
 90 78 70 50 31.5 Paved Walk
 10.64 9.86 9.2 6.0 3.85
 62.43 63.21 63.9 67.1 69.22
 T.S.
 GS GS GS @ face OS OS
 50 75 82 100 125
 5.1 6.3 7.6 9.1 13.5
 68.0 66.8 65.5 64.0 59.6

✓ ES 11/14/86

16/486

Inst.	Tape	Wthr & Temp.		Date	Crew
				73.07 ✓	
1+75	GS	GS	GS	(Paved Walk)	GS
	100	75	60	41	
	11.8	7.3	5.72	4.67	
	61.3	65.8	67.35	68.40	

1+75	GS	GS	(Paved Walk)	
	0	25	41.5	46.5
	4.2	5.5	6.15	6.38
	68.9	67.6	66.92	66.69

Corner	1+62	LT	32.5	3.86	69.21
Pad	1+62	LT	35.5	3.88	69.19
for					
Band	1+70	LT	32.5	3.89	69.18
	1+70	LT	35.5	3.90	69.17

Corner	1+80	LT	14.5	3.95	69.12
Pad	1+80	LT	2.0	3.98	69.09
for					
Band	1+86	LT	7.0	4.02	69.05

See Bottom of Page 14 for
Additional Corner

Corner Pad	1+85	RT	5.5	5.02	68.05
for	1+89.5	RT	11.5	5.08	67.99
Band	1+92	LT	0.5	5.03	68.04
	1+97	RT	5.0	5.07	68.00

17

Inst.	Tape	Wthr & Temp.		Date	Crew
	Paved				
	Walk				
31	26	11.0		7.8	
4.00	3.91	3.93		3.96	
69.07	69.16	69.14		69.11	

	GS	GS @ CLF	GS	GS
50	75	79	100	125
6.6	8.2	8.5	10.1	15.1
66.5	64.9	64.6	63.0	58.0

✓ ES 11/10/86

TBM 59
Page 6

5.47

67.60 ✓

8

18/486

Inst. Tape Wthr & Temp. Date Crew

TBM as in Lady Page 6 4.45

7205 ✓
1

1+85 2+ 28.5 Int of

	BS			Top Knot
2-	GS	03	05	
	100	75	50	29
	12.6	9.0	4.7	2.3
	59.5	63.1	67.4	69.8

	GS			EP P
2-	0	25	50	56.8
	4.3	6.0	7.4	7.41
	67.8	66.1	64.7	64.64

2+25

	Paved Walk	Grass	Paved	Conc	
2+25	17.5	24.0	43.5	45.5	53.5
	6.66	7.04	7.93	7.91	7.96
	65.39	65.01	64.12	64.14	64.09

Inst. Tape Wthr & Temp. Date Crew

19

67.60

Paved Walk RR 3.12
68.93

	GS	EP	Paved Walk EP
	25	8.6	0.5
	2.5	3.97	4.34
	69.6	68.08	67.71

	Paved Walk EP	Grass	GS
	61.7	77	100
	7.50	8.4	9.8
	64.55	63.7	62.3

	OS		Top Knoll		GS
	73	50	28	25	0
	12.4	5.2	1.5	1.7	4.8
	59.7	66.9	70.6	70.4	67.3

	Grass	Paved Walk EP		Grass	GS
	62.0	66.5	75	78.5	100
	8.68	8.73	9.7	9.7	10.9
	63.37	63.32	62.4	62.4	61.2

✓ ES 11/10/86

20/486

Inst.	Tape	Wthr & Temp.	Date	Crew
			72.05	✓
			Ledge	
2+50	GS	GS	Top Ledge	
	50	41.6	39.6	
	11.9	9.3	7.8	
	60.2	62.8	64.3	

Inst.	Tape	Wthr & Temp.	Date	Crew
2+50	Paved Walk	EP	Grass	Paved Walk
	45.3	50	58.3	63.0
	9.35	9.5	9.58	9.69
	62.70	62.6	62.47	62.36

Inst.	Tape	Wthr & Temp.	Date	Crew
2+75	GS-OS	Top Knoll	GS	GS
	25	8	0	25
	11.3	7.9	8.9	11.8
	60.8	64.2	63.2	60.3

□ Sq. Set @
T.P. Cor of Conc. Pad
for Bench
2+93 Rt. 71'

✓ End of CLF
0+70 Rt. 79.5 GS. 4.21 67.43

Inst.	Tape	Wthr & Temp.	Date	Crew
0+75	EBldg	GS		
	41	50	75	
	2.3	2.5	4.3	
	69.3	69.1	67.3	

Inst.	Tape	Wthr & Temp.	Date	Crew
				21
				Paved Walk
GS	OS	Top Knoll	GS	E
39.0	25	21	0	25
8.0	4.3	4.1	6.7	8.7
64.1	67.8	68.0	65.4	63.4
				39.2
				9.23
				62.82

Inst.	Tape	Wthr & Temp.	Date	Crew
GS	GS @ CLF			
75	82.5			
10.6	11.3			
61.5	60.8			

Inst.	Tape	Wthr & Temp.	Date	Crew	
				Paved Walk	
Low Spot	GS	EPvc	EPvc	GS	@ CLF
34'	50	51.5	59.5	75	88.6
12.2	10.9	10.82	10.52	10.8	12.5
59.9	61.2	61.23	61.53	61.3	59.6

$\frac{71.64}{\wedge}$ ✓
11.28 60.77

Inst.	Tape	Wthr & Temp.	Date	Crew
				Ladies Tee
GS @ CLF	OS GS	BS	E. Tee	On Tee
80'	100	110	122.5	150
4.5	8.8	11.1	10.5	10.3
67.1	62.8	60.5	61.1	61.3

✓ ES 11/10/86

22/486

7164 ✓

Inst.	Tape	Wthr & Temp.	Date	Crew
		GS @ 81/4	GS	GS @ CLF
1 -	41	50	75	81.5
	2.3	2.9	4.6	5.2
	69.3	68.7	67.0	66.4
		GS @ 81/4	GS	GS
1+25	41	50	75	
	2.4	3.3	4.7	
	69.2	68.3	66.9	

TR. D Sqn Ledge
Page 6

0+17.5 Lt 54' PC Curb @ 4'
0-44' Lt 116' Catch Basin

BM #25 4.12 72.28 ✓ 68.16 ✓

Rim CB 0-44 Lt 116 RR 9.28 63.00 ✓

Rim CB 1+61 Lt 112' RR 11.44 60.84

PT of Curb 1+30.5 Lt 52'

Light Pole 1+44 Lt 58.5

Back of Walk + E of 5' walk 1+62 Lt 100'

23

Inst.	Tape	Wthr & Temp.	Date	Crew
		Low spot		
GS	BS	GS	GS	
100	114	125	150	
8.0	11.0	10.7	12.7	
63.6	60.6	60.9	58.9	
GS @ CLF		Swale	GS	
83.5	100	125	150	
5.3	7.2	12.1	15.4	
66.3	64.4	59.5	56.2	

4.04

67.60 ✓

Opening

N.B. 391/30



✓ ES 11/10/86

24 | Additional Info @ Maintenance

Inst. 486 Tape Wthr & Temp. Date RR Crew
 NOV 12, 1986



TBM @ Sign Lodge 6.16 $\frac{73.76}{\wedge}$ 67.60
 Page 6

✓ ES 11/14/86

Elev. at bottom of Plywood (texture 1-11) siding on New Storage Bldg.

(69.90; 69.91; 69.96) call 69.9 E.S.

11/13/86

Bldg Norfolk Golf Course 25

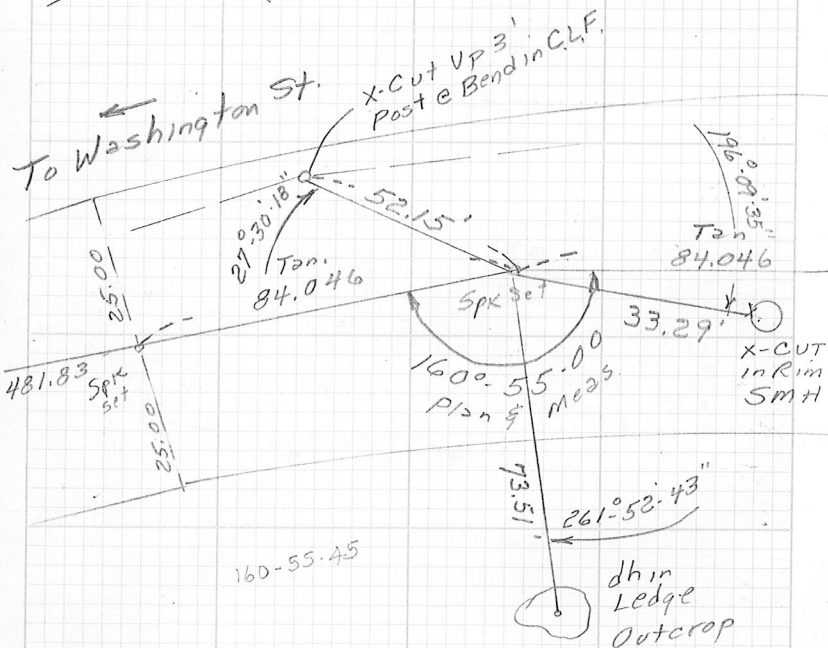
Inst. Tape Wthr & Temp. Date Crew

QUINCY

28 / Rerunning Layout of

Inst. 486 Tape Wthr & Temp. Date Crew

160-55-14	160-55-00
199-04-44	199-05-00
359-59-58	359-60-00



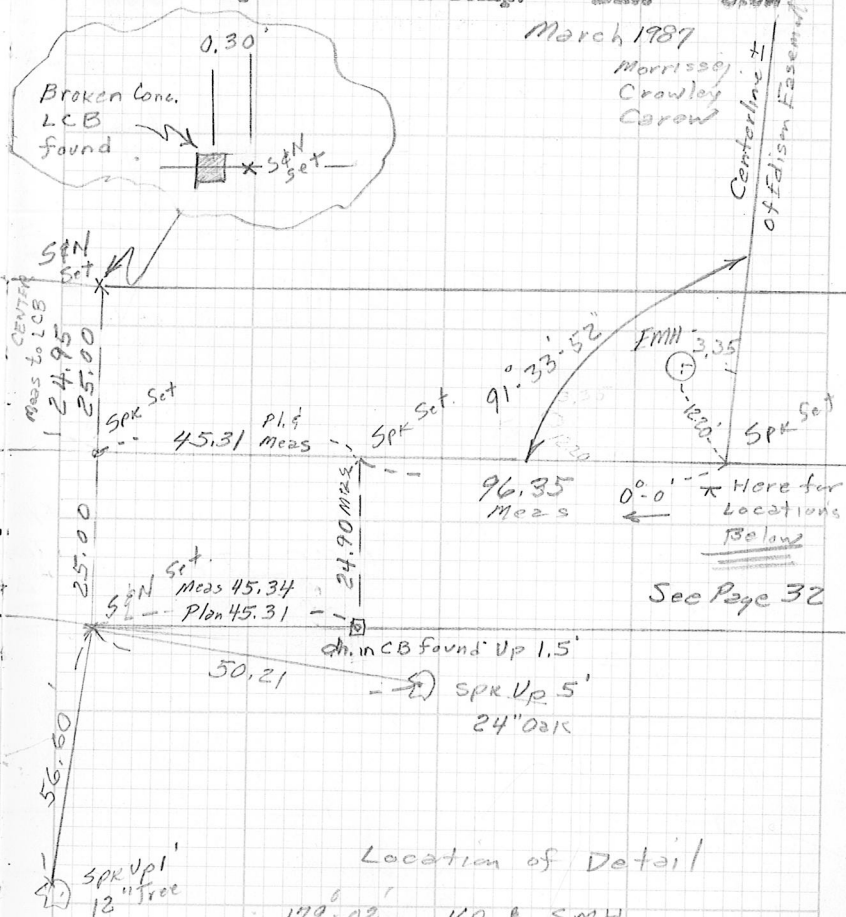
Location of Detail

- 94°-31' 103' E of Track
- 56°-07' 145' E of Track
- 54°-45' 117' Tel Plat.
- 95°-24' 172' } 36" Corr. Pipe Metal
- 69°-31' 176' }
- 192-13' 117' • 2' x 3' Box Culvert
- 197-24' 117' • 24" RCP with End Wall 2' x 8' x 6.5' High

Revere St. CANTON 29

Inst. Tape Wthr & Temp. Date Crew

March 1987
Morrison
Crowley
Carow

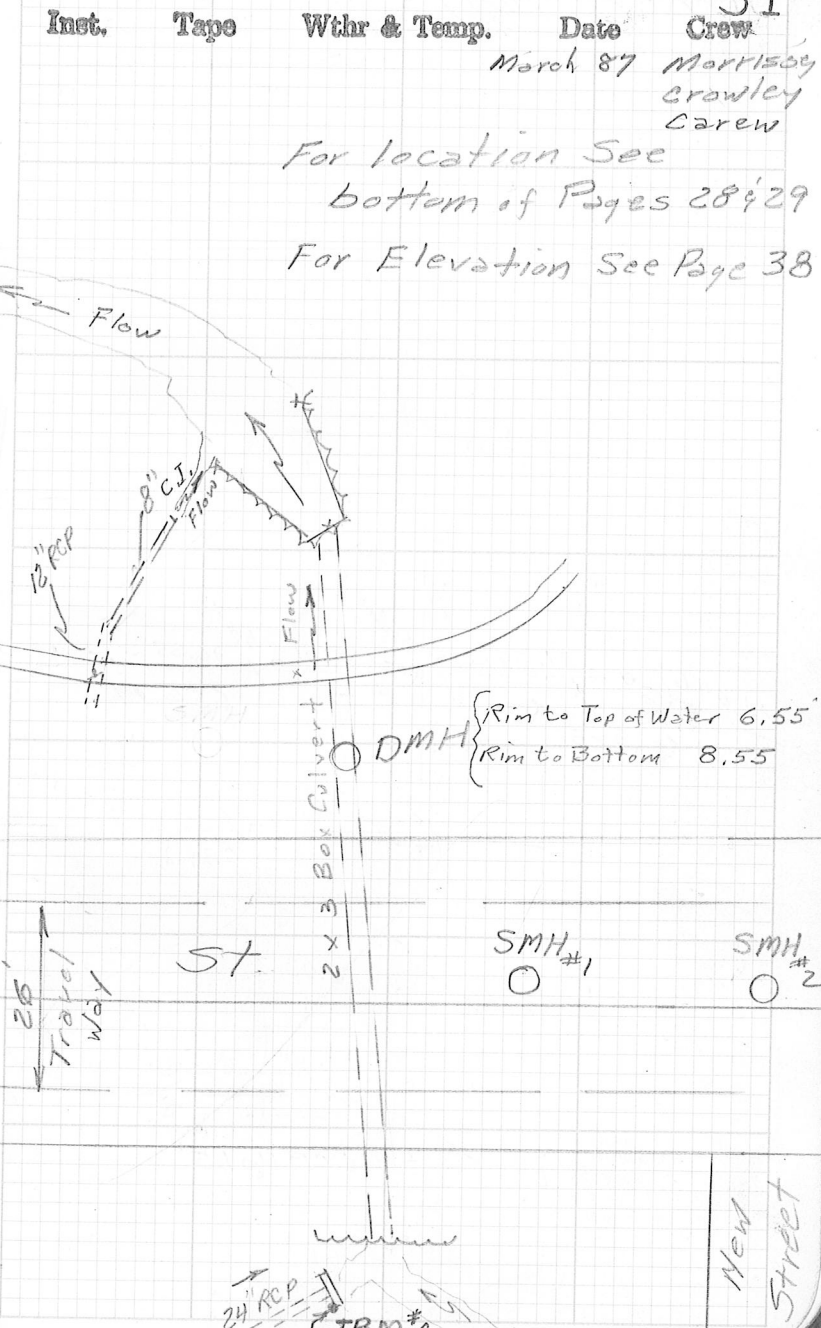
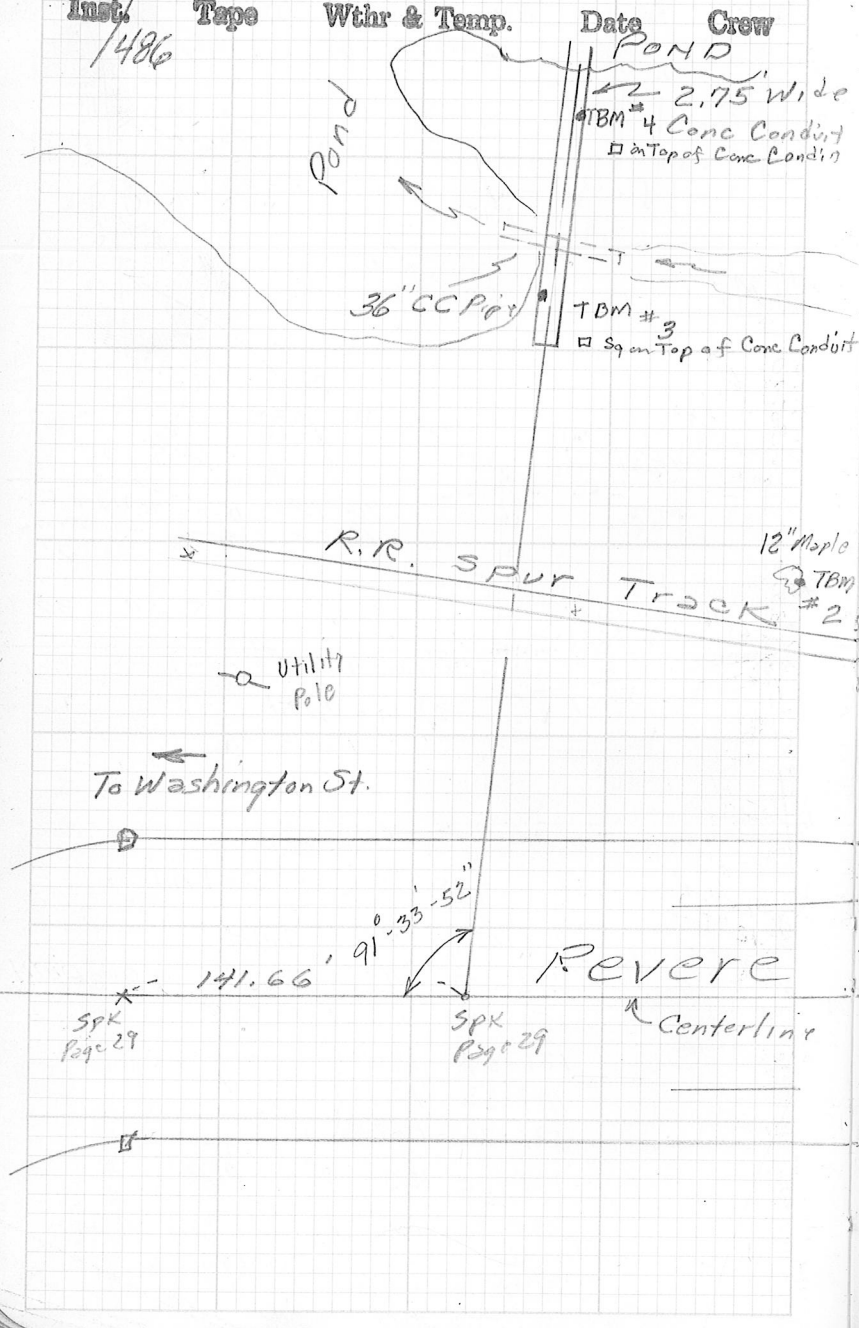


Location of Detail

- 179°-02' 160' SMH
- 159-34 115' SMH Cover Over DMH
- 150-39 126' of TRACK
- 136-57 140' } Culvert
- 139-33 127' } Wall
- 131-36 132' } Conc.
- 131-22 123' 8" CL Pipe
- 128-56 110' 1 1/2" 12" & 8" Pipes
- 130°-58' 94' 12" RCP Under track

30 Sketch of Drainage and

Location of TBMs Revere St. Cantor 31



Inst.	Tape	Wthr & Temp.	Date	Crew
1486				

Inst.	Tape	Wthr & Temp.	Date	Crew
			March 87	Morrissey Crawley Carew

For location See
bottom of Pages 28 & 29
For Elevation See Page 38

DMH {
Rim to Top of Water 6.55'
Rim to Bottom 8.55'

To Washington St.

Revere
Centerline

St.

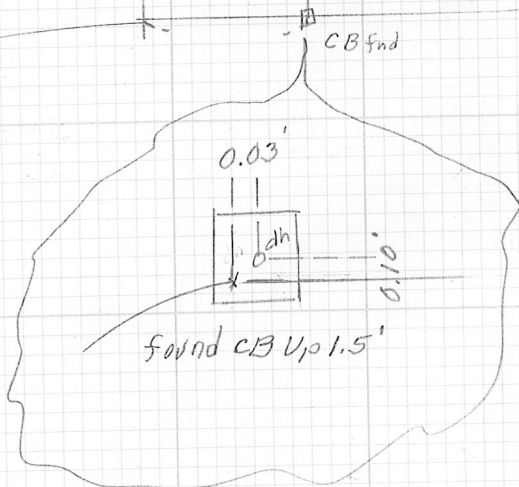
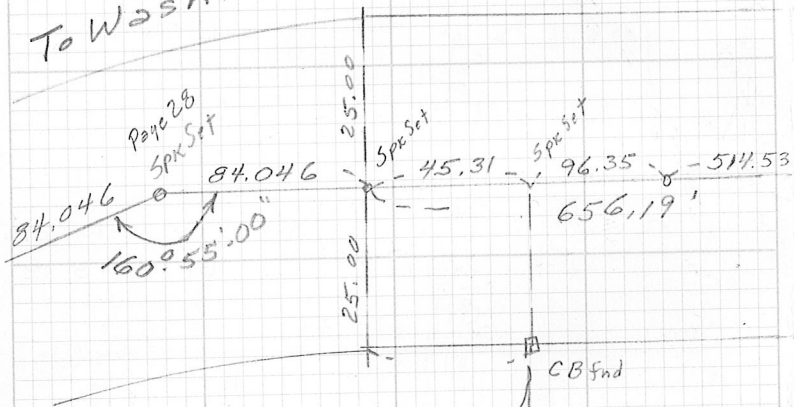
New
Street

32 Rerunning Layout of

Inst. Tape Wthr & Temp. Date Crew

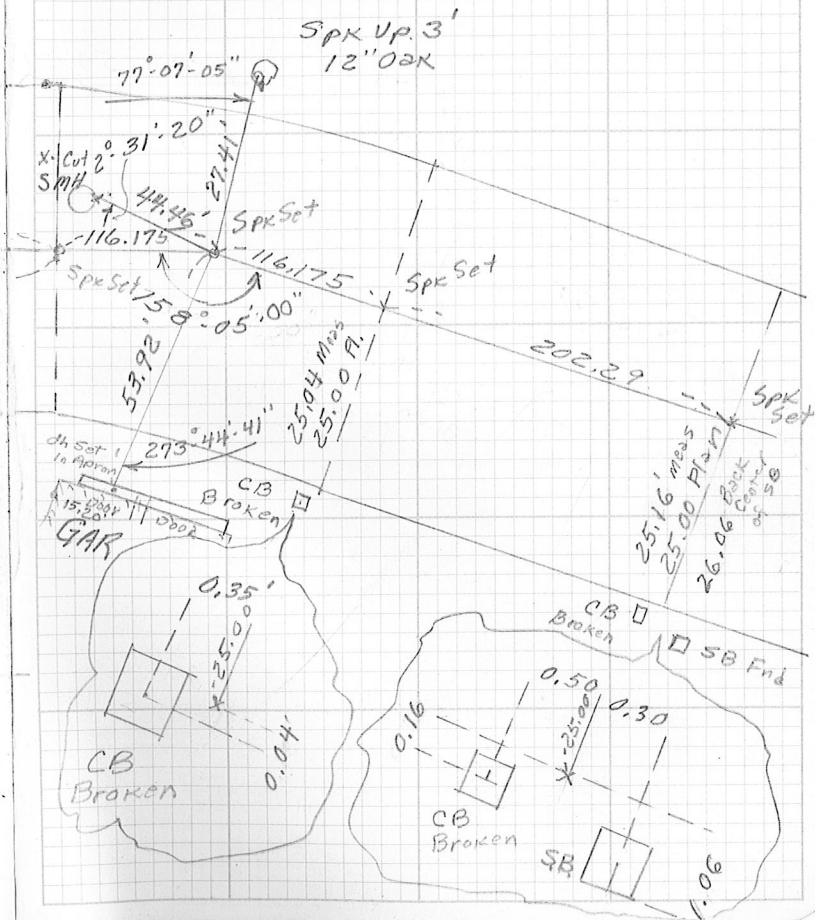
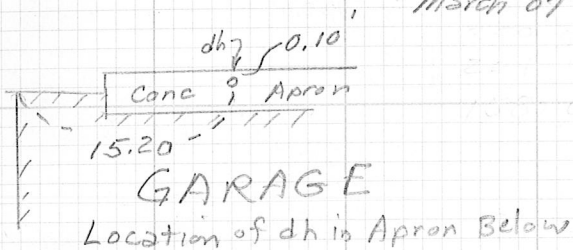
84.05
656.19
116.17
856.41

← To Washington St.



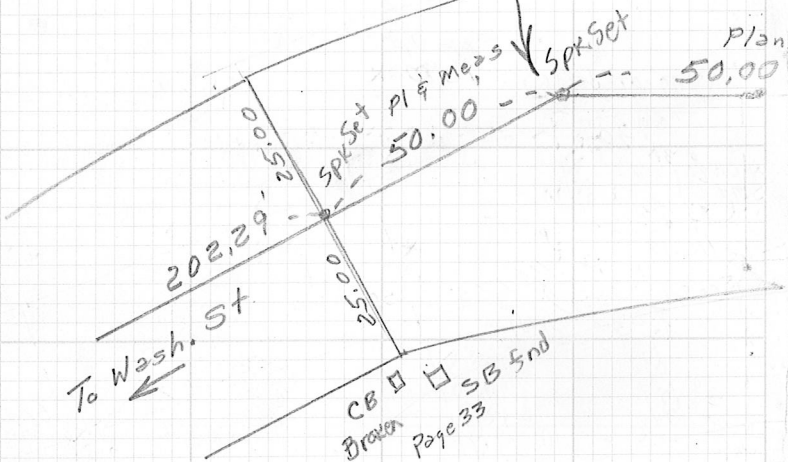
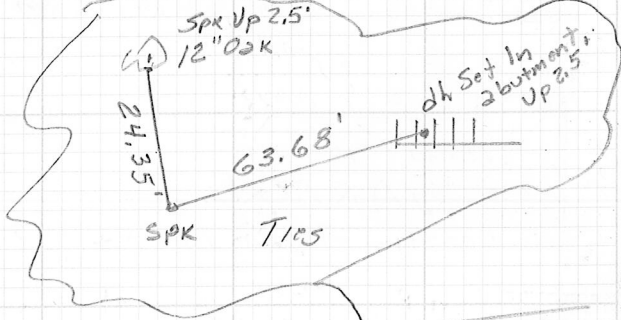
Revere St, Canton 486/33
Inst. Tape Wthr & Temp. Date Crew

March 87 Morrissey
Crowley
Carew



34 Rerunning Layout of

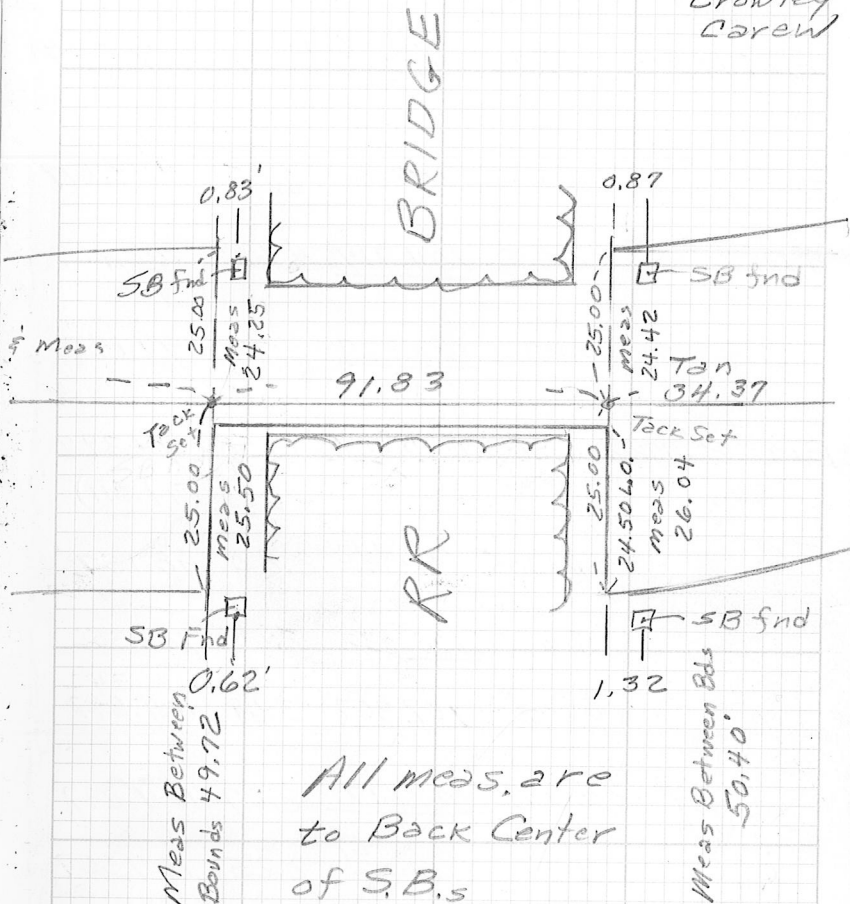
Inst. Tape Wthr & Temp. Date Crew



Revere St. Canton 486/35

Inst. Tape Wthr & Temp. Date Crew

March 87 Morrissey
Crowley
Carew



All meas. are
to Back Center
of S.B.s

Meas Between Bds
50.40

38 Elevations -- Revere St.

Inst.	Tape	Wthr & Temp.	Date	Crew
See Sketch Pages 30-31				
TBM ₁	□ Sq NE Cor 1 of Conc. Endwall Page 31	3.71	<u>76.51</u>	72.80
Inv	2 x 3 Box Culvert East Side of Revere St.	11.38	65.13	
Inv	24"	7.26	69.25	
Rim	SMH ₁	2.46	74.05	
Rim	SMH ₂	1.86	74.65	
Rim	SMH cover over DMH.	4.81	71.70	
TBM ₂	Spr Up 2' 12" Maple 50'± South of 2x3 Culvert 12' West of Spur Track	2.53	<u>75.09</u>	3.95 72.56
Inv	8" CI Pipe	7.23	67.86	
Top of	Stone Wall Culvert	5.60	69.49	
Inv	2 x 3 Box Culvert	12.22	62.87	
Inv	12" RCP Inlet Under Track	5.05	70.04	
On	Track @ 12" RCP	4.00	71.09	
TBM ₂	Spr Up 2' 12" Maple 50'± South of 2x3 Culvert 12' West of Spur Track	2.37	<u>74.93</u>	2.53 72.56

486/39

Inst.	Tape	Wthr & Temp.	Date	Crew
Level				
			<u>74.93</u>	
TBM ₃	□ Sq In South Side Top of Conc Conduit 50'± West of Spur track	2.29	<u>70.75</u>	6.53 68.40
	↳ ELEC CONC CONDUIT			
Top of	Stone Endwall (South End) 9' Long	5.3	65.5	
Inv	of 36" CC	9.60	61.15	
Top of	Stone Endwall (North End)	3.3	67.5	
Inv	of 36" CC	8.92	61.83	
Top of	Water @ Pond	7.2	63.5	
TBM ₃		7.92	<u>76.32</u>	2.29 68.40
TBM ₄	□ Sq In North Side Top of Conc Conduit 15'± East of East Edge of Pond (8.50' Top of Conc Conduit to Top of Water In Pond)	4.62	<u>76.71</u>	4.23 72.09
TBM ₃		7.48	<u>75.87</u>	8.32 68.39
TBM ₂			3.32	72.55
TBM ₁			3.09	72.78 (72.80)

40 Check Level Run - Reverse

Inst.	Tape	Wthr & Temp.	Date	Crew
TBM ₁	5.14	<u>77.94</u>		72.80
SMH ₁	3.89	74.05		
TBM ₂	2.99	<u>75.55</u>	5.38	72.56
TBM ₃	7.31	<u>75.72</u>	7.14	68.41
TBM ₄			3.62	72.10

See Page 30 for Sketch of Location of TBMs

St. Canton

Inst. Tape Wthr & Temp. Date Crew

486/41

BM ^{SEC} of Core Endwall	2.73	<u>75.53</u>		72.80
--------------------------------------	------	--------------	--	-------

Inv. @ Headwall 11.34 64.19

Bot Water 3' from Headwall 10.2 65.3

Check on 24" 6.26 69.27 OK

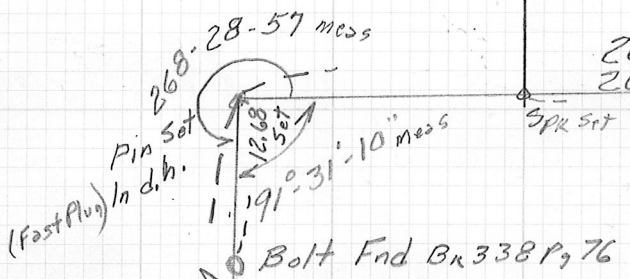
46 / Traverse Connection Washington & Revere Sts Canton 47

Inst. 486 Tape Wthr & Temp. Date Crew
 96° Sunny 15.00 to Old ch 15.06 to New Ith
 Morrissey
 Prisco
 Lebeau

435.21
 12.68
 447.89

S

(SEECALC BK 49 PG 71 & 171)

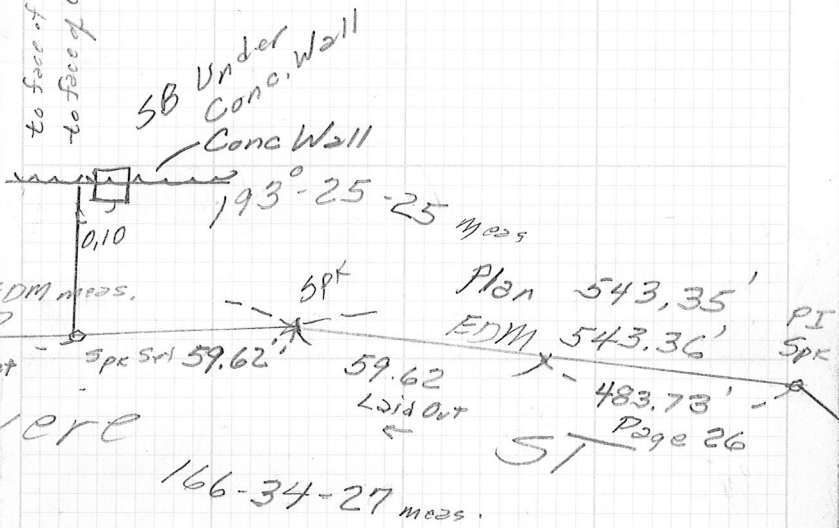


BP 29.6
 Temp 96
 VA 89-06-12
 448.09 5D
 448.035 HD

BP 29.6
 Temp 96
 VA 90-05-00
 263,795 5D
 263,79 HD

SB fnd Ties Bk
 338 P, 76

Inst. Tape Wthr & Temp. Date Crew
 to face of Bound 14.65 to face of Conc Wall 14.98
 Aug 4, 87 Morrissey
 Prisco
 Lebeau



J. BROWN
 CANTON Police

#15 hrs

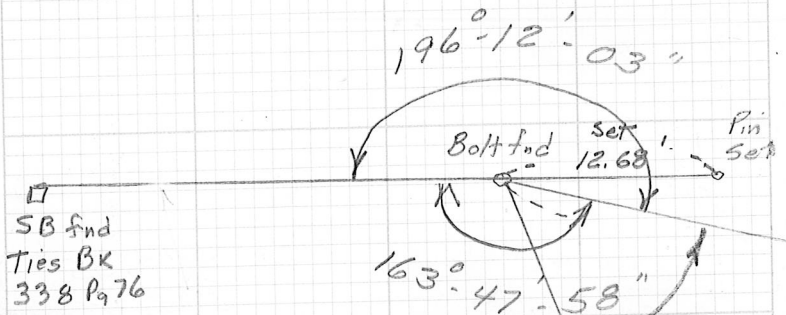
48 Traverse Connection Revere & Wash Sts. Canton 49

Inst. 486 Tape Wthr & Temp. Date Crew

Inst. Tape Wthr & Temp. Date Crew
 8/6/87 Morris
 Prisco
 Lebeau

90°-04'-25"

Edm 386.905 SD
 386.900 HD



SB fnd
 Ties BK
 338 P₉₇₆

386.900 EDM

Calc Bx 49
 Page 86
 Bolt fnd

Washington
 55°-45'-50"

Closing Horizon
 55-45-50
 304-14-14
 360-00-04

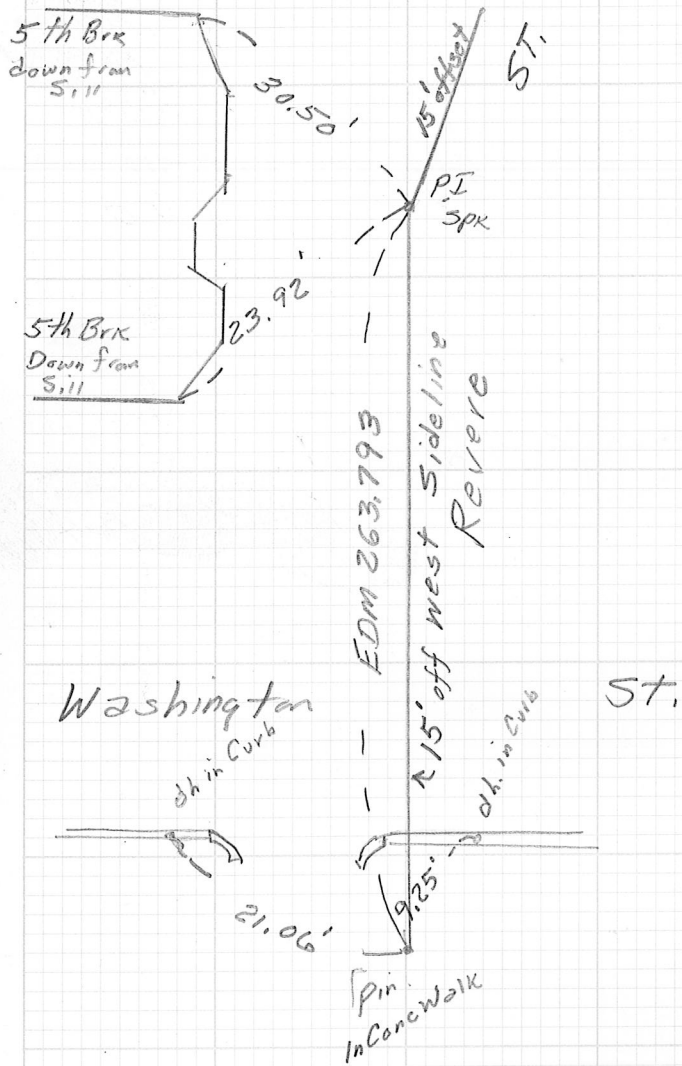
Revere St

Conc. 0.06'

SB found

STREET

50/ Connection Revere &
 Inst. 486 Tape Wthr & Temp. Date Crew



Bldg # 655
 Washington St

Washington St. Center 51
 Inst. Tape Wthr & Temp. Date Crew

52/486

Inst.

Tape

Wthr & Temp.

Date

Crew

Inst.

Tape

Wthr & Temp.

Date

Crew

53

36 54 X SECTIONS COBBS
 Inst. Tape Wthr & Temp. Date Crew

H.I. CONTINUED FROM NB 338 p. 159

INTERSECTION
 COBBS CORNER

170.94^v
 ^

		©	RIM
	0	25	26
0+55 RT		6.2	5.81
B.M.H.		164.7	165.13

			RIM
	0		32
0+62 RT			5.71
B.M.H.			165.23

		ETW	OBSERV. WELL	ETW
	0	4	13.5	25
0+70 RT		5.44	5.73	6.01
		165.50	165.47	165.21
				164.93

		©	07		
0+76 LT	60	48.5	48.5	47	35
ASK BACK	4.73	5.08	4.70	4.67	4.95
07 CONC CURB	166.21	165.86	166.24	166.27	165.99

			07
	60		47
0+76 LT	4.73		4.69
ASK BACK	166.21		166.25
		©	
07 AT		47	5.12
CONC CURB			165.82

CORNER CANTON - SHARON 486/55 JL
 Inst. Tape Wthr & Temp. Date Crew
 LEVEL ROD P.C. SO[±] 3/6/91
 PRISCO
 LEONE
 GOTTI
 CAREW

28	35	50	60
6.06	5.7	6.3	6.3
164.88	165.2	164.6	164.6

	07	©	ETW	
25.5	24.5	24.5	19	0
5.32	5.37	5.74	5.96	5.27
165.62	165.57	165.20	164.98	165.67

	07	ETW	
35	25.5	19	0
4.95	5.32	5.96	5.27
165.99	165.62	164.98	165.67
	©	ETW	
35	25.5	19	0
5.47	5.68	5.96	5.27
165.47	165.26	164.98	165.67

56 / X SECTIONS COBBS CORNER

Inst. Tape Wthr & Temp. Date Crew

1/486

INTERSECTION
COBBS CORNER

170.94^v
^

0+79 LT
ENTRANCE

<	ASPH
60	50
3.81	4.32
167.13	166.62

0+87 RT
BEGIN ASPH
CURB

0	ETW	@ CURB
4.93	5.5	35
166.01	5.01	5.55
	165.93	165.39

1+0 LT

75
3.07
167.87

1+0 RT

0	ETW	@
	6.5	40.5
	4.48	5.03
	166.46	165.91

1+02 LT
AT & ON CONC
CURB

@ CURB @	55	53.5	50
	3.66	3.73	3.86
	167.28	167.21	167.08
on CURB	55	53.5	
	3.24	3.33	
	167.70	167.61	

CANTON - SHARON

Inst. Tape Wthr & Temp. Date Crew

3/6/91

PRISCO
LEONE
GENITI
CAREW

57

Level	ROD	P.C.	So±
35	25	19	0
4.97	5.30	5.50	5.16
165.97	165.64	165.44	165.78

on CURB	35	40	50	55	75
	5.27	4.7	5.5	5.9	5.2
	165.67	166.2	165.4	165.0	165.7

GAS	STA	ETW	
60	50	35	26
3.56	3.90	4.45	4.77
167.38	167.04	166.49	166.17

CURB on	40.5	50	60	75	100
	4.75	3.8	4.6	4.9	4.7
	166.19	167.1	166.3	166.0	166.2

ETW	35	28	22	0
	4.32	4.55	4.66	4.32
	166.62	166.39	166.28	166.62

58/ X SECTIONS COBB'S CORNER

Inst. Tape Wthr & Temp. Date Crew

1486

170.94^v

1+02.5 LT	<u>60</u>	@	<u>07</u>	
07+AT	3.43	57.5	57.5	55
CON CURB	167.51	3.53	3.08	3.19
		167.41	167.86	167.75

0+16 RT	<u>0</u>	@	conc	@
BEGIN CONC	3.65	2		4
ISLAND	167.29	3.60		3.64
		167.34		167.30
		<u>07</u>	conc	<u>07</u>
		2		4
		3.31		3.32
		167.63		167.62

0+16 LT	<u>75</u>	@	<u>07</u>	CURB	
CONC	2.61	73.5	73.5	73	60
CURB	168.33	2.64	2.19	2.20	2.5
		168.30	168.75	168.74	168.4
			167.63	167.62	

0+46.5		RIM MH	
CONC ISL. RT		9'	<u>0</u>
+ M.H LT		2.20	2.16
		168.74	168.78

CANTON - SHARON 59

Inst. Tape Wthr & Temp. Date Crew

Level Rod P.C. SOT 3/6/91 PRISCILLA LEONE GENETTI CAREW

53.5 SAME AS 1+02 LT

3.28

167.66

ETW	@ CURB
<u>8</u>	<u>50</u>
3.79	4.26
167.15	166.68

CURB	@	ETW	
<u>43</u>		<u>37</u>	<u>23</u>
3.86		4.01	4.00
167.08		166.93	166.94

07 CURB	07
<u>3</u>	
1.75	1.75
169.19	169.19

@ CURB	@
<u>3</u>	
2.14	2.21
168.80	168.73

60 X SECTIONS COBBS CORNER

Inst. Tape Wthr & Temp. Date Crew

1486

INTERSECTION
COBBS CORNER

170.94^v
^

1750

LT & RT

50	40	18	0
1.95	1.95	2.04	2.01
168.99	168.99	168.90	168.93

CANTON → SHARON

Inst. Tape Wthr & Temp. Date Crew

LEVEL

ROD

P.C. SOT

3/6/91

PRISCO
LOONE,
GENITT,
CAREW

61

8	26	50
2.19	2.39	2.45
168.75	168.55	168.49

- 8.34

162.60^v

THIS SQ CONC BLOCK SIGN
STA 1755 RT 35'
ELEV 162.60 NB338/138
WASH. ST.

62 X SECTIONS COBBES
 Inst. 486 Tape Wthr & Temp. Date Crew

+10.19

181.13
 /
 K

+53.5 RT 0

W.G.

WG
 19.5
 12.31
 168.82

+85 RT 0

G.G.

66
 17
 10.78
 170.35

+97 RT 0

WG

WG
 18.5
 10.12
 171.01

2+0 RT

± LT

40 20
 10.21 9.82
 170.92 171.31

2+10 RT

W.G.

0
 WG
 13.5
 9.35
 171.78

CORNER CANTON - SHARON 63.1
 Inst. Level Tape Rod Wthr & Temp. Date Crew
 P.C. 50° 3/7/91 PRISCO
 Leone
 Genitti
 CAREW

T.P. Chis 59 SET IN CONC
 ISLAND SHARON ST. SIDE
 ELEV 170.94 W.B. 338/138

0 20 40
 9.70 10.00 10.35
 171.43 171.13 170.78

45
 64 X SECTIONS COBBES
 Inst. Tape Wthr & Temp. Date Crew
 1486

BAY RD

181.13
 ^

2+13 RT

0

W.G.
 24.5
 9.54

W.G.

171.59

2+15.5

0

W.G.
 8.5
 8.93
 172.20

W.G.

2+30 LT

6.6

26

0

G.G.

8.83

172.30

2+34 LT

@ CURB ON AT

6.6 6.6 6.5.5 48.5 0.0

Asph CURB

8.76 8.31 8.30 8.26 8.24
 172.37 172.82 172.83 172.87 172.89

2+37.5 LT

on BK

51.5

ON CONC CURB

8.21

172.92

2+38 LT

ON FAT

CONC CURB

CORNER CANTON & SHARON
 Inst. Tape Wthr & Temp. Date
 LEVEL ROD P.C. 50± 3/7/91

65
 CREW
 PRISCO
 LEONE
 GENITTI
 CAREW

@ CURB	ON S.W.	ON	@ CURB	ETW	ETW	ETW
48	36.5	36	36	19.5	3	0
8.79	8.84	8.85	9.30	8.37	7.76	7.66
172.34	172.29	172.28	171.83	172.76	173.37	173.47

ON AT BK	ON	@ CURB	ETW	ETW	ETW
49	48.5	48.5	34.5	3	0
8.19	8.13	8.68	9.00	7.29	7.43
172.94	173.00	172.45	172.13	173.84	173.70

ON	ON	ETW	ETW	ETW
51.5	48.5	34.5	3	0
8.20	8.14	SAME AS ABOVE		
172.93	172.99			
@	@			
51.5	48.5			
8.70	8.63			
172.43	172.50			

RG

66 / X SECTIONS COBBS

Inst. Tape Wthr & Temp. Date Crew

486

181.13 ✓
 $\begin{array}{r} \hline \end{array}$

		Asph		07
	@ CURB	07	<	SIDE
2+50 RT	<u>0</u>	<u>27</u>	<u>27</u>	<u>35</u>
	6.67	7.96	7.67	6.83
	174.46	173.17	173.49	174.30

		ENT + EXIT	
2+50 LT	<u>75</u>	<u>60</u>	
ENTRANCE	7.82	7.55	
GAS STA.	173.31	173.58	

+7.95

184.21 ✓
 $\begin{array}{r} \hline \end{array}$

			CONC CURB	
2+56 LT	<u>75</u>	<u>60</u>	<u>50</u>	<u>34.5</u>
ASK AHEAD	9.55	8.96	8.70	9.24
ON CONC CURB	174.66	175.25	175.51	174.97

2+56.5 LT			07	07
ASK AHEAD			<u>50</u>	<u>34.5</u>
ON + @ CONC CURB			8.08	8.74
			176.13	175.47

CORNER CANTON SHARON 67^{SW}

Inst. Tape Wthr & Temp. Date Crew
 LEVEL ROD P.C. 50[±] 3/7/91 PRISCO
 LOONE
 GENITT
 CAREW

WALK 7	GRASS		
<u>40</u>	<u>42</u>	<u>50</u>	<u>60</u>
6.95	6.30	6.5	7.4
174.18	174.83	174.6	173.7

GAS STATION	E+W	E+W	
<u>50</u>	<u>40</u>	<u>27.5</u>	<u>2.5</u>
7.55	7.60	7.90	6.75
173.58	173.53	173.23	174.38

-4.87 (176.26 ✓)

T.P. GRAN HEADER

@	07	07 ASP	@ CURB	E+W	E+W	
<u>33</u>	<u>28</u>	<u>27</u>	<u>27</u>	<u>25</u>	<u>2.5</u>	<u>0</u>
9.32	9.30	9.36	9.82	10.04	9.46	9.41
174.89	174.91	174.85	174.39	174.17	174.75	174.80

07				
<u>33</u>				
9.09				
175.12				
@ 107				
<u>33</u>				
9.10				
173.11				

SAME AS ABOVE 0

RC

68 X SECTIONS COBBS CORNER
 Inst. Type Wthr & Temp. Date Crew
 /486

184.21
 ^

2+58.5 RT 0
 W.G.

W.G.
 18.5
 9.90
 174.31

	0	@ CURB	on	SIDE
2+60 RT	0	22.5	22.5	30
ASPH CURB	9.15	10.09	9.76	9.11
	175.06	174.12	174.45	175.10

	on CURB	50	@ WALL	41
2+73 LT	54 53.5	50	43	41
BEGIN STONE WALL	7.58 7.58	7.0	7.0	6.8
	176.63 176.63	177.2	177.2	177.4
	60		43	41
	8.57	8.21	5.32	5.32
	175.64	176.00	178.89	178.89

2+75 LT D.M.H.
 RIM 10.5
 8.56
 175.65

	0	RIM	on
2+85 RT	0	23	07
C.B + GRAN		8.45	7.92
HEADER		175.76	176.29

BAY RD SHARON
 Inst. Tape Wthr & Temp. Date Crew
 LEVEL ROD PC. 50°F 3/7/91
 PRISCO
 Leone
 Genitt
 CAREW

WIK	GRASS	60
34.5	50	60
9.20	9.5	9.5
175.01	174.7	174.7

BKS.W.	on ASPH	@ CURB	ftw	0
31	20.5	20.5	2'	0
7.74	8.55	9.09	8.45	8.43
176.47	175.66	175.12	175.76	175.78

HEADER	BK S.W.
23.5	28
7.90	7.75
176.41	176.46
176.31	

RGL

70/ X SECTIONS COBBS CORNER

Inst. Tape Wthr & Temp. Date Crew

1490

184.21

BAY RD

2+86 LT

C.B. & GRAN
HEADER

BK S.W.
30
6.99
177.22

ON HEADER

22.5
7.89 7.90
176.32 176.31 175.80

RIM
22
8.41

3+0 LT

60
7.2
177.0

50
6.8
177.4

BK 41.5
6.5 4.48 4.47
177.7 179.73 179.74 178.2

ON WALL @WALL
39.5
6.0

3+0 RT

0
6.97
177.24

18
7.26
176.95

30 DRIVE
6.90
177.31

3+02 LT

ASK ASK
AHEAD AT
& ON STONEWALL

@ 60
7.2
177.0

@ 40.5
6.6
177.6

ON WALL OR
38.5
4.27
179.94

ON 60
4.42
179.70

ON 40.5
4.31
179.90

3+035 LT
ASK AHEAD

ON AT STONE
WALL

ON 60
4.51
179.70

ON 40.5
4.31
179.90

ON WALL
38.5
4.24
179.97

@ WALL 60
5.8
178.4

@ 40.5
5.3
178.9

BAY RD
Inst. Tape
LEVEL ROD

SHARON
Wthr & Temp.
P.C. 50±

Date
3/7/71

71
Crew
PRISCO
Leone
Genitt
CAREW

ETW

2.5 0
782 7.81
176.39 176.40

BK S.W.

30
6.12
178.09

ON CURB @
18 18
6.75 7.26
177.46 176.95

ETW
2 0
6.96 6.97
177.25 177.24

40
6.69
177.52

50
6.46
177.75

60
6.10
178.11

@WALL
38.5
5.7
178.5

BK S.W.
29
5.94
178.27

ON CURB + @
18.5 18.5
6.54 7.04
177.67 177.17

ETW
0
6.76
177.45

@ 38.5
5.4

SAME AS ABOVE

178.8

72 X SECTIONS COBB'S CORNER

Inst. Tape Wthr & Temp. Date Crew

1486

BAY RD

184.21

185.38

+ 3.28

@CURB

3+11 RT	0	18.5	18.5	30
Asph CURB	7.54	7.74	7.40	7.5
	177.84	177.64	177.98	177.9

3+14 LT		30	28.5	07
Asph CURB		7.2	7.25	7.30
		178.2	178.13	178.08

3+20 LT		60	50	40
E DR.		5.64	5.89	6.22
		179.74	179.49	179.16

3+30 RT	0	30		e-wik
W.G.		6.58		5.9
		178.80		179.5

3+30.5 LT	@ BID			
ASK AHEAD	49	40	32	26
@ TOP RET	4.4	5.66	6.20	6.40
TIMBERS	181.0	179.72	179.18	178.98
		07	07	07
		4.5	5.0	5.3
		180.9	180.4	180.1

BAY RD
Inst. Tape
LEVEL ROD

SHARON
Wthr & Temp.
P.C. 35°
windy

73
Date Crew
3/8/91
PRISCO
LEORF
GEMINI
CAREW

- 2.11

182.10

B.M. ROC BOT CONC STEP
HSE # 36 Elev (182.08) USE
NIB 330/138

50
7.3
178.1

@CURB ETW

185	2	0
7.76	7.43	7.54
177.62	177.95	177.84

30	ETW	ETW	
6.60	18	1	0
178.78	7.01	6.66	6.65
	178.37	178.72	178.73

@	ETW	
24	19	0
6.51	6.73	6.65
178.87	178.65	178.73
07		
5.9		
179.5		

30 74 / X SECTIONS COBBS CORNER

Inst.	Tape	Wthr & Temp.	Date	Crew
1486				

BAY RD

185.38



3+31 LT		07
ASK AHEAD	<u>40</u>	32
07 @ AT	4.5	5.0
TIMBERS	180.9	180.4

	<u>40</u>	32
	4.8	5.2
	180.6	180.2

3+38 LT		@
ASPH CURB	<u>30</u>	20.5
	6.27	6.52
	179.64	178.86

TIMBER
07
5.9

3+50 RT	ETW <u>0</u> 5.79	@CURB <u>18</u> 6.07	07 <u>18</u> 5.65
	179.59	179.29 31	179.73

3+50 LT		@BD
		<u>48</u>
		4.1
		181.5
		181.3

75

Inst.	Tape	Wthr & Temp.	Date	Crew
BAY RD LEVEL	RD	35°	3/7/91	PRISCO LEDIE Gerrit CAREW

TIMBERS	07+@	ETW	
<u>26</u>	24	19	0
5.3	5.9		
180.1	179.5		

TIMBERS	<u>26</u>
	5.9
	179.5

07 CURB @	ETW		
<u>18</u>	1	0	
6.30	6.67	6.31	6.317
179.08	178.68	179.07	179.07

	GRASS		
<u>30</u>	<u>40</u>	<u>50</u>	<u>60</u>
5.8	6.3	6.1	6.1
179.6	179.1	179.3	179.3

30	07 CURB @	@	
<u>4.4</u>	<u>18.5</u>	<u>18.5</u>	0
180.0	5.69	6.03	
	176.69	179.35	

78 X SECTIONS COBB'S CORNER

Inst. Tape Wthr & Temp. Date Crew

1/486

BAY RD

185.38

^

4+0 RT

ETW	ETW	
<u>0</u>	<u>18</u>	<u>30</u>
4.06	4.45	4.6
181.32	180.93	180.8

4+0 LT

<u>60</u>	<u>50</u>
3.07	3.29
182.31	182.09

+3.86

188.23

^

4+05 LT
BEGIN ASPH
CURB

4+11 LT
AT E 017
STONE MASON
RET WALL

@
41
6.20
182.03

017
41
4.15
184.08

BAY RD SHARON

Inst. Tape Wthr & Temp. Date Crew

Level

cloth

P.C.
windy

35°

3/7/91

PRISCO
LEONE
Genl. Insp.
CAREW

79

40

4.8

180.6

40

3.59

181.79

50

5.2

180.2

30

3.96

181.42

60

5.6

179.8

ETW

18.5

4.40

180.98

-1.01

184.37

T.P. TOP COR WALL

ON CURB @

<u>30</u>	<u>18</u>	<u>0</u>
6.5	6.73	7.12
181.7	181.58	181.11
		181.43

WALL	@WALL		@	ETW
<u>31.5</u>	<u>30</u>	<u>07</u>	<u>18</u>	<u>0</u>
6.3	6.2	6.46	6.87	6.62
181.9	182.0	181.77	181.36	181.61

<u>011</u>	<u>011</u>
3.86	3.90
184.37	184.33

80 / X SECTIONS CORBBS CORNER

Inst. Tape Wthr & Temp. Date Crew

426

188.23

4+13 RT
 BEGIN ASPH
 CURB + TOP
 SLOPE

	$\frac{1}{0}$ ETW	@	ASPH CURB
	$\frac{0}{6.57}$	$\frac{18}{6.85}$	$\frac{07}{6.45}$
	181.66	181.38	181.78

4+50 RT

	$\frac{0}{5.56}$ ETW	@	07 WIK
	182.67	$\frac{18}{5.89}$	$\frac{07}{5.46}$
		182.34	182.77

4+50 LT

	$\frac{60}{1.7}$	GRASS	$\frac{50}{1.7}$	$\frac{40}{1.7}$
	186.5	186.5	186.5	

4+70 RT
 G.G.

	$\frac{0}{6.6}$	$\frac{66}{23}$	$\frac{495}{183.28}$
--	-----------------	-----------------	----------------------

4+73 RT
 W.G.

	$\frac{0}{5.19}$	WG	$\frac{215}{5.19}$
			183.04

BAY RD SHARON

Inst. Tape Wthr & Temp. Date Crew

81
 PRISCO
 Leone
 Gentry
 CAREY

@ WALL

$\frac{30}{6.5}$	$\frac{07}{4.0}$	$\frac{34}{5.6}$	$\frac{50}{6.1}$
181.7	184.2	182.6	182.1

@ STEP

$\frac{30}{4.87}$	$\frac{31.5}{4.83}$	$\frac{07}{4.36}$	$\frac{07}{7.35}$	$\frac{07}{3.7}$ Wood PORCH	@
183.36	183.40	183.87	183.88	184.5	$\frac{38}{3.6}$
					184.6

BK WALL

$\frac{31.5}{2.98}$	$\frac{07}{30}$	@	$\frac{30}{5.1}$	$\frac{07}{5.57}$	CURB @	$\frac{18.5}{5.90}$	$\frac{0}{0}$
185.25	185.24	183.1	182.66	182.33			

82 / X SECTIONS COBBS CORNER

Inst. Tape Wthr & Temp. Date Crew

486

188.23

4+91 RT
BRICK STEP

etw	@ CURB	07
0	18	
4.47	4.73	4.31
183.76	183.50	183.92

5+0 RT

etw	@ CURB	07	30
0	18		
4.34	4.56	4.07	4.4
183.89	183.67	184.16	183.8

5+0 LT

etw	50	40	31.5
0			
0.9	0.9	1.1	1.40
187.3	187.3	187.1	186.83

+3.29

189.98 ✓

5+20.5 RT
END ASP CURB

etw	@CURB	07 CURB
0	18	07
5.75	6.04	5.81
184.23	183.94	184.17

60	50
2.5	2.6
187.5	187.4

BAY RD SHARON
Inst. Tape Wthr & Temp. Date Crew

Level Cloth PC 35° 3/7/91
windy

83

Crew
PRISCO
Leone
(GENT)
CAREW

@ STEP	07	ON BK STEP
30		37
46	4.3	3.97
183.6	183.9	184.24

@HSE
48
43
183.9

07	@	07	@
30	30		18
1.43	3.8	4.16	4.63
186.80	1844	184.07	183.60

-1.54

186.69 ✓

T.P. BOLT IN WALL P.C.
CENTRAL ST

30	@conc	@HSE
6.1	6.01	4.8
5.98	5.98	
183.9	183.97	184.00

38.5	37	37	07	@CURB	0
2.31	2.35	5.0	2.6	25.5	
187.67	187.63	185.0	5.20	5.65	
			184.78	184.33	

84 X SECTIONS COBBS CORNER

Inst. Tape Wthr & Temp. Date Crew

486

189.98

^

07 @WALL

5+35 LT	53	51.5	51.5
CATCH BASIN	1.26	1.36	4.4
	188.72	188.62	185.6

G.G.

5+37 LT	10	0
GAS GATE	5.53	
	184.45	

5+39 RT	ETW	ETW	20.5
DR. WAY	0	1.8	5.58
	5.54	5.80	184.40
	184.44	184.18	

5+40.5 LT	0	14.5
CALL OUT	5.53	5.39
EXITING ETW	184.45	184.59
PROFILE CENTRAL ST.		

G.G.

5+41.5 LT	19	0
G.G.	5.35	
	184.63	

BAY RD SHARON 85

Inst. Tape Wthr & Temp. Date Crew

Level Cloth cloudy 30 windy MAR 11, 91 PRISCO LEONE Genitt CAREW

CURD	RIM	ETW	ETW
49	48.5	40.5	18
4.54	5.15	7.95	5.40
185.44	184.83	185.03	184.58
			184.41

25	30	@ APRON	CEAR	FLOOR GAR
5.89	6.05	44	48	48
184.09	183.93	6.01	5.96	5.92
		183.97	184.02	184.06

0+50	PROFILE	CENTRAL	ST
ETW	1+0	ETW	1+50
4.33		2.33	0.85
185.65		187.65	189.13

86 / X SECTIONS COBB'S CORNER

Inst. Tape Wthr & Temp. Date Crew

1/86

189.98

^

5+44.5 LT

G.G.

10
5.51
184.47

0

5+50 RT

ETW
0
5.45
184.53

ETW L \leftarrow
18
5.71
184.27

5+50 LT

ETW
87.5
297
187.01

5+52 LT

D.M.H

RIM
16
5.32
184.66

0

5+57 RT

BEGIN ASPH

CURB

ETW
0
5.43
184.55

@
21.5
5.70
184.28

07
5.42
184.56

BAY RD SHARON

87

Inst. Tape Wthr & Temp. Date Crew

Level

cloth

Cloudy
↓

30°
windy

MAR 11, 91

PRISCO
LEOTE
GENITT,
CAREW

15ph DRIVE @GAR GAR Floor

27.5	25	30	39	40.5	47.5	47.5
5.56	5.92	6.00	6.08	6.40	6.38	6.05
184.42	184.06	183.98	183.90	183.58	183.60	183.93

50
4.33
185.65

ETW CENTRAL ST
10
4.60
185.38

19
5.24
184.74

0

@ CONC APROT 07 @ BID.

30	38	38	40
6.00	6.2	5.95	5.86
183.98	183.8	184.03	184.12

88/ X SECTIONS COBBS CORNER

Inst. Tape Wthr & Temp. Date Crew

1486

189.98

5+64.5 RT	ETW	@	07
CONC RET	0	22	
WALL	5.41	5.80	5.34
	184.57	184.18	184.64

5+64.5 RT			ETW
ASPH CURB			57
			4.15
			185.83

5+67.5 RT	0	RIM	07
CATCH BASIN		22.5	
& HEADER		5.99	5.38
		183.99	184.60

+ 4.50

190.99 ✓

5+74.5 RT		@ CURB	07
END CONC	0	18.5	
RET WALL	5.60	5.83	5.53
	184.59	184.36	184.66

BAY RD SHARON

89

Inst. Tape Wthr & Temp. Date Crew
 LEVEL CLOTH Cloudy 30° windy MAR 11, 91 PRISCO
 Leone
 CAREW

07	@	07	07	@GRD
22.5	30	39	41	50
5.30	6.4	6.9	6.45	10.5
184.68	183.6	183.1	183.34	183.53
			179.5	179.4

GRASS	07	@	
50	36.5	36	22
3.6	4.50	4.96	5.42
186.4	185.48	185.02	184.56

GRAN		
23	30	
5.35	6.4	
184.63	183.58	

- 4.29 SPK Pole #3
 (185.694)

22.5	30	@ CONCRETE WALL	BK	@GRD
5.3	6.5	39	40.5	50
184.9	183.7	7.6	7.22	9.7
		182.6	182.97	182.28
				180.5
				179.8

90/ X SECTIONS COBBS CORNER

Inst. Tape Wthr & Temp. Date Crew

486

190.19

5+85 RT	0	18	30
BEGIN STONE	5.59	5.72	5.22
RET WALL	184.60	184.47	184.97
			184.1

6+0 RT	0	18.5	
	5.50	5.50	5.02
	184.69	184.69	185.17

6+0 LT	60	50	
	1.4	2.2	
	188.8	188.0	

6+08 RT	0	19.5	
END STONE	5.42	5.42	4.94
RET WALL	184.77	184.82	184.77
			185.25

+3.92

190.93

BAY RD SHARON 91

Inst. level Tape cloth Wthr & Temp. Date Crew

cloudy 30.8 windy

MAR 11, 91

PRISCO
LSONE
GENTLE
CREW

07 WALL @	40	50
39	11.1	10.9
7.8		
182.4	179.1	179.3

30	40	41	50	60
5.7	7.5	10.6	11.0	11.4
184.5	182.7	179.6	179.2	178.8

40	30	17	0
3.2	4.0	5.39	5.69
187.0	186.2	184.80	184.50

30	40	42	50	60
5.8	7.6	9.7	11.3	11.8
184.4	182.6	180.5	178.9	178.4

-3.18

186.01

T.P. HIGH PT
STONE WALL

54 92 / X SECTIONS COBBES CORNER

Inst. Tape Wthr & Temp. Date Crew
/486

190.93

6+34 LT
ASK A HEAD
ON + AT STONE MASON

on WALL	on WALL
47.5	41.5
2.34	3.39
188.59	187.54

RET WALL

@ WALL	@ WALL
on @ Footing	
47.5	41.5
5.11	5.37
185.82	185.56

6+37 LT
END ASPH CURB
& TOP CONC STEP

CONC on PLAT	on	@
50	47	STEP
1.59	1.58	2.13
189.34	189.35	188.88

6+38.5 LT
ON + @ STONE
FOOTING

6+44 LT
ON & AT
BACK 1ST
STEP

on WALL	on STEP @ BK 1ST	on STEP
48	41	37.5
2.1	2.60	4.96
188.8	188.33	185.97
		185.94
		185.29
		185.26

BAY RD SHARON 93 st

Inst. Tape Wthr & Temp. Date Crew
Level cloth SUNNY 38° 3/12/91 PRISCO
LEONE
GENITH
CAPRW

ON 1ST STEP

40	37.5	37.5	30	24	18	0
5.70	5.74	4.72	4.75	5.05	6.14	5.85
185.23	185.19	186.21	186.18	185.88	184.79	185.08

@ STEP

40	37.	30	24
6.30	6.15	6.24	5.99
184.63	184.78	184.69	184.94

@ STEP ON STONE WALL CURB @

on	45	44	30	on	17	0
2.13	2.79	1.72	4.8	5.99	6.21	6.84
188.80	188.4	189.21	186.1	184.94	184.72	184.09

on on FTW

47	39.5	18
5.41	5.44	6.84
185.52	185.49	184.09

@ @

47	39.5
5.28	6.37
185.65	184.56

< WALL on @ WALL FTW

36.5	34	32	30	18	0
4.39	4.53	4.59	6.29	6.33	6.13
186.54	186.40	186.34	184.64	184.60	184.80
					185.24

94 / X SECTIONS COBB'S CORNER

Inst. Type Wthr & Temp. Date Crew

1486
 6+48 LT
 STONE MASON
 WALL RET
 190.93
 45
 232
 188.61
 077 2

6+50 RT
 0
 5.56
 185.37
 1.5
 5.52
 185.41
 19
 5.36
 185.57
 501
 185.92

6+50 LT

6+61 LT
 BEG 17 ASPH
 CURB
 43.5
 6.6
 184.3
 40
 6.5
 184.4

6+65 RT
 W. G.
 0
 21
 4.55

6+73 RT
 END ASP CURB
 0
 5.04
 185.89
 1
 5.04
 185.89

BAY RD SHARON 95

Inst. Level Tape Cloth Wthr & Temp. Date Crew
 sunny windy 38° 3/12/91 PRISCO
 Leone
 Genetti
 CAREW

07 @ WALL
 39.5 38 30 17 0
 3.47 6.24 6.39 6.05 5.59
 187.46 184.69 184.54 184.88 185.34

30 46 60
 5.4 9.6 10.9
 185.5 181.3 180.0

@ GAR DR WAY
 45.5 40 30 17 0
 6.25 6.46 6.42 6.04 5.56
 184.68 184.47 184.51 184.89 185.37

07 CURB @
 30 22 17.5 0
 6.4 5.7 5.53 5.92 5.33
 184.5 185.2 185.40 185.01 185.60

18.5 07 25 30 Edge Asph 07 DR
 4.69 4.38 4.6 5.1 5.0 8.14 9.37
 186.24 186.55 186.3 185.8 182.79 181.56

96 X SECTIONS COBBS CORNER
 Inst. Tape Wthr & Temp. Date Crew
 1/486

19093
 6+89 RT
 ASK BK
 E DR. WAY

Inst.	Tape	Wthr & Temp.	Date	Crew
0	L		19	
4.61	460	435		
186.32	186.33	186.58		

6+97 RT
 BEGIN ASPH
 CURB

Inst.	Tape	Wthr & Temp.	Date	Crew
0	L		19	
4.38	398	3.67		
186.55	186.95	187.26		

7+0 RT

Inst.	Tape	Wthr & Temp.	Date	Crew
0	L		19	
4.26	4.24	3.93		
186.67	186.69	187.00		

7+0 LT

Inst.	Tape	Wthr & Temp.	Date	Crew
0	L		30	
6.4	6.7	6.2		
184.5	184.2	184.7		

7+10 LT
 ASK AHEAD
 AT E ON STONE
 MASON WALL

Inst.	Tape	Wthr & Temp.	Date	Crew
0	L		31	
6.3	6.3			
184.6				
0	L		50	
2.05				
188.88				

BAY RD SHARON
 Inst. Tape Wthr & Temp. Date Crew
 level cloth SUNNY 38° 3/12/91 PRISCO LEONE GENIT-CAREW

DRIVE

Inst.	Tape	Wthr & Temp.	Date	Crew
22	L		30	
4.17	500	639		
186.76	185.93	184.54		
50	L		50	
7.69		887		
183.24		182.06		

Inst.	Tape	Wthr & Temp.	Date	Crew
25	L		30	
3.7	4.3	5.3		
187.23	186.6	185.6		
40	L		40	
6.8				
184.1				
50	L		50	
8.0				
182.9		182.3		

Inst.	Tape	Wthr & Temp.	Date	Crew
0	L		25	
3.69	3.7	4.2		
187.34	187.2	186.7		
30	L		30	
6.1				
184.8				
50	L		50	
7.5				
183.4		182.5		

on CURB @

Inst.	Tape	Wthr & Temp.	Date	Crew
28	L		24	
6.2	4.6	4.36		
184.7	186.3	186.57		
18	L		18	
4.80				
186.13				

WALL @ on CURB @

Inst.	Tape	Wthr & Temp.	Date	Crew
31	L		24	
5.8	4.1	3.96		
185.1	186.8	186.97		
18	L		18	
4.39				
186.54		186.98		

WALL on

Inst.	Tape	Wthr & Temp.	Date	Crew
31	L		31	
3.12				
187.81				

98 / X SECTIONS COBBS CORNER
 Inst. Tape Wthr & Temp. Date Crew

486

19293
 ^

7+16 LT
 END ASPH
 CURB

@ WALL

50	40	32
2.16	2.94	3.05
188.77	187.99	187.88

+4.15

19293
 ^

7+26 RT
 SLOPE

0
 5.42
 187.51

ETW

1
 5.41
 187.52

@

185
 5.17
 187.76

CURB

7+26 LT
 E DRIVEWAY

E

DRIVE

60	50	40
3.35	3.51	4.21
187.58	189.42	188.72

7+35 LT
 BEGIN ASPH
 CURB

@GAR	DR EDGE	40
55.5	48.5	
3.16	3.34	3.7
189.77	189.59	189.2

BAY RD SHARON
 Inst. Tape Wthr & Temp. Date Crew

99

PRISCO
 Leone
 Genitt
 CARAW

30	01 CURB @	18	0
3.6	3.96	4.28	3.76
187.3	186.97	186.65	187.17

2.15 188.78

T.P. GRAN HEADER

07

24	30	40	60
4.75	4.9	6.0	6.6
188.18	188.0	186.9	186.3

30	ETW	18	0
5.03	5.86	5.42	
187.90	187.07	187.51	

07 CURB @

30	19	0
4.5	5.06	5.46
188.4	187.87	187.47
		5.09
		187.84

30 100 / X SECTIONS COBBS CORNER
 Inst. Tape Wthr & Temp. Date Crew
 /486

192.93
 ^

7+45 RT
 Top Slope

$\frac{0}{4.74}$	$\frac{0.5}{4.74}$	$\frac{18}{4.56}$	4.13
188.19	188.19	188.37	188.80

7+50 RT

$\frac{0}{4.57}$	$\frac{18}{4.36}$	$\frac{39}{3.91}$	
188.36	188.57	189.02	

7+50 LT

@ HSE	$\frac{48}{2.6}$	$\frac{40}{2.7}$
#70	190.3	190.2

7+60 LT
 RIM CATCH
 BASIN + GRAN HEADER

$\frac{40}{2.4}$	
190.5	

7+64 RT
 RIM CATCH BASIN
 & GRAN. HEADER

$\frac{0}{4.05}$	$\frac{21}{4.17}$
188.88	188.76

BAY RD SHARON 101
 Inst. Tape Wthr & Temp. Date Crew
 level cloth SUNNY 38° 3/12/91
 PRISCO
 LEONG
 GENTILE
 CAREW

Top Slope

$\frac{30}{3.3}$	$\frac{40}{1.6}$	$\frac{50}{0.9}$	$\frac{60}{0.5}$
189.6	191.3	192.0	192.4

Top Slope

$\frac{30}{3.6}$	$\frac{40}{1.7}$	$\frac{50}{0.9}$	$\frac{60}{0.5}$
189.3	191.2	192.0	192.4

on CURB @ Etw

$\frac{30}{3.1}$	$\frac{18.5}{4.41}$	$\frac{0}{4.83}$
189.6	188.52	188.10

on GRAN RIM Etw

$\frac{30}{2.9}$	$\frac{22.5}{4.13}$	$\frac{22}{4.14}$	$\frac{0}{4.71}$	$\frac{0}{4.21}$
190.0	188.80	188.79	188.22	188.72

on GRAN BOT Top

$\frac{30}{3.59}$	$\frac{21.5}{3.57}$	$\frac{30}{3.4}$	$\frac{38}{0.6}$	$\frac{50}{0.7}$
189.34	189.36	189.5	192.3	192.2

36 102 / X SECTIONS COBB'S CORNER

Inst. 486 Tape Wthr & Temp. Date Crew

192.93

7+69 LT
ONE CONC STEP
+ PLAT
BRICK CAPPED

BK PLAT	07	BK STEP
46	47	47
1.01	0.98	1.58
191.92	191.95	191.35

7+80 LT
WATER GATE

WG	
25	0
2.95	
189.98	

8+0 RT

	@ CURBS	07
0	18	
2.85	2.50	2.02
190.08	190.43	190.91

8+0 LT

	60	50	40
2.4	2.6	2.6	2.6
190.5	190.3	190.3	190.3

8+0.4 LT
TREE WELL

	50	@	07 Block	CTR WELL
1.8	2.2	33	30	1.7
191.1	190.7	191.18	191.2	

BAY
Inst.
LEVEL

RD
Tape
Cloth

SHARON
Wthr & Temp.
SUNNY 38°
windy

Date
3/12/91

103
Crew
PRISCO
Leong
Genitt
CREW

	@ STEP		on CURB @	ETW
07	43	30	17.5	0
1.57	2.4	2.7	3.89	4.33
191.36	190.5	190.2	189.04	188.60
				189.02

30	40	50	60
1.0	0.5	0.3	0.1
191.9	192.4	192.6	192.8

	07 CURB @		
30	18.5	0	
2.8	2.94	3.39	
190.1	189.99	189.54	

07	Block	07	@	ETW
	27		18	0
2.00	2.5	2.85	3.30	2.75
190.93	190.4	190.08	189.63	190.18

104/X SECTIONS COBBS CORNER

Inst. Tape Wthr & Temp. Date Crew

1486

192.93
^

8+28 LT

	<u>50</u>	<u>30</u>
	0.1	0.7
	192.8	192.2

8+34 RT

END ASP CURB

ETW	@ CURB	on	
<u>0</u>	<u>185</u>		<u>30</u>
1.91	1.45	1.21	0.48
191.02	191.48	191.72	192.45

+7.05

198.40
^

8+50 RT

ETW			GRASS
<u>0</u>	<u>175</u>	<u>30</u>	<u>40</u>
7.01	6.54	5.7	5.6
191.39	191.86	192.7	192.8

8+50 LT

@ISE	EDGE	FLAG
<u>57</u>	<u>48.5</u>	<u>WIK</u>
5.75	5.59	4.45
192.65	192.81	192.61

BAY RD SHARON

Inst. Tape Wthr & Temp. Date Crew

105

LEVEL Cloth SUNNY Windy 40° PM

3/12/91 PRISCO
LEONE
GENITT
CAREW

	<u>6.6</u>	on CURB @	
25	<u>22</u>		<u>18</u>
1.8	2.09	2.28	2.70
191.1	190.84	190.65	190.23

<u>50</u>
0.2
192.7

-1.58 191.35

T.P. R.O.C. BOT BRICK
STEP HSE # 70

<u>50</u>	<u>60</u>
5.4	5.1
193.0	193.3

		on CURB @	ETW
<u>33</u>	<u>30</u>		<u>185</u>
5.8	6.3	7.28	7.70
192.6	192.1	191.12	190.70

106 / X SECTIONS CORBBS CORNER
 Inst. Tape Wthr & Temp. Date Crew
 /486

192.40
 ^

8+54 RT	ETW	@	on
BEGIN ASP	0	18.5	CURB
CURB	6.92	6.45	6.14
	191.48	191.95	192.26

8+55 LT	50	40	31.5	31.5
BEGIN CONC	5.9	6.07	6.15	6.50
RET WALL	192.5	192.33	192.25	191.90

8+58.5 LT
 END ASPH
 CURB

8+60. LT	50	on+AT	on
on WIK @	6.2	37.5	wik
BK 3RD	192.2	6.20	37
BRICK STEP		192.20	192.20

8+60.5 LT			191.56
on 3RD BRICK	37.5	37	37
STEP AT BACK	SAME AS ABOVE	6.84	
2ND STEP			191.56

BAY RD SHARON
 Inst. Tape Wthr & Temp. Date Crew
 level L cloth SUNNY 40 = 3/13/91 PRISCO
 Leong
 Genitt
 CAREW

30	50
5.5	5.2
192.9	193.2

@	on	CURB @	ETW
0.7	30	18.5	0
6.51	7.18	7.11	7.55
191.89	191.22	191.29	190.85
			191.48

CONC RET	@	ASPH	ETW
on	on	on	CURB @
31.5	30	30	18.5
6.50	6.52	7.6	7.16
191.90	191.88	190.8	191.24
			190.88
			191.61

on WIK	on+AT	on	@	ETW
@ STEP	33	31	30	18
33.5	6.22	6.50	6.51	7.7
192.28	192.18	191.90	191.89	190.71
				190.94
				191.61

on STEP
33.5
6.86
191.54

on 2ND	33.5	33	SAME AS ABOVE	0
33.5	6.86			
191.54				

108 / X SECTIONS COBBS CORNER
 Inst. Tape Wthr & Temp. Date Crew
 486

198.40
 ^

8+61.5 LT
 ON BACK 1ST
 BRICK STEP
 AT 2ND

on WALL 50
 6.35
 192.05
 on WALL 37
 6.27
 192.13
 @ 7.31

8+62 LT
 END CONC
 RET WALL +
 ON 1ST STEP

on 50
 6.35
 192.05
 @ 50
 7.31
 189.09

8+67 LT
 DRIVE +
 W.G.

GAR FLOOR 59
 9.91
 188.49
 DRX WELL IN 10.16
 187.8
 DRY WELL SG 9.96
 188.44
 50 9.46
 188.94

8+73 LT
 BEGIN ASPH
 CURB + CONC
 RET WALL

BAY RD SHARON
 Inst. Tape Wthr & Temp. Date Crew
 LEVEL CLOTH SUNNY 40 ± 3/13/91
 PRISCO
 Leone
 Genitt
 CAREN

109

← ON BK 1ST ON WALL ON @ WALL ETW
 @ 2ND
 37 33.5 33.5 31 30 18 0
 7.97 7.97 6.25 6.26 6.27 8.0 7.46 6.78
 190.43 190.43 192.15 192.14 192.13 190.4 190.94 191.62

on 1st STEP on WALL @ WALL ETW
 37 33.5 33.5 on 30 18 0
 7.96 7.97 6.24 6.27 8.0 7.46 6.77
 190.44 190.43 192.16 192.13 190.4 190.94 191.63

@ @ STEP
 37 33.5
 8.71 8.53
 189.69 189.87

DRIVE W.G. ETW ETW
 40 30 26.5 19 18 0
 8.87 8.12 7.89 7.12 7.31 6.63
 189.53 190.28 190.51 191.28 191.09 191.77

@ 30.5 @ on CURB @ ETW
 WALL on on 30 19 18.5 0
 8.14 4.50 4.52 8.02 6.68 7.18 6.49
 190.26 193.90 193.88 190.38 191.72 191.22 191.91

110 / X SECTION SECTIONS COBBS

Inst.	Tapo	Wthr & Temp.	Date	Crew
-------	------	--------------	------	------

19840
^

	58	<u>50</u>	<u>40</u>
8+75 LT	9.6	9.3	8.5
TIMBER RET	198.4	189.1	189.9
WALL AT	<u>58</u>	on wood	on
ε on	5.9	<u>50</u>	<u>40</u>
ASK BACK	192.5	5.9	58
		192.5	192.6

	AT		GROUND
8+78 LT	58.5	<u>50</u>	<u>40</u>
ASK BACK	5.6	5.8	5.7
TIMBER RET	192.8	192.6	192.7
WALL AT ε	<u>58</u>	on	wood
on	4.0	<u>50</u>	<u>40</u>
	194.4	4.1	4.0
		194.3	194.4

8+95 LT	<u>60</u>	<u>50</u>	<u>40</u>
END ASP	3.4	3.6	3.7
CURB	195.0	194.8	194.7

+556

19882
^

CORNER BAY RD SHARON

Inst.	Tapo	Wthr & Temp.	Date	Crew
-------	------	--------------	------	------

111

	33	33	33	32.5	4.7	4.5	3.0	1.85	0
	8.2	5.8	4.5	4.5	4.4	4.5	7.67	6.66	7.11
	190.2	192.6	193.9	193.9	193.9	193.89	190.73	191.74	191.29
									191.98

	33	32.5	32.5	31.5	30	30	1.85	0
	5.7	4.0	4.6	4.45	4.49	6.9	6.59	7.03
	192.7	194.4	193.8	193.95	193.91	191.5	191.81	191.37
								191.99

	31.5	30	30	1.85	0
	4.18	4.19	6.0	6.17	6.65
	194.22	194.21	192.4	192.23	191.75
					192.32

- 5.14

193.26

T.P. END CONC WALL

PRISCOB
LEONEX
GENTIL R
CROWE

4/16

112 / X SECTIONS COBB'S CORNER
 Inst. Tape Wthr & Temp. Date Crew
 /486

198.62

970 RT
 ETW @ CURB ON
 0 18 30
 6.41 6.12 5.62 5.5
 192.41 192.70 193.20 192.9
 193.3

970 LT
 60 @ ON @
 52 52 50 ON 47 40
 6.71 6.81 3.94 4.00 4.05 4.4 4.6
 192.11 192.01 194.68 194.82 194.77 194.42 194.2

9704 LT
 ASK BK
 @ WALL @
 50 40
 4.3 4.7
 194.5 194.1

AT @ ON
 CONC RET WALL
 ON WALL ON
 50 40
 3.97 4.26
 194.85 194.56

9705 LT
 ASK BACK
 ON @ AT
 CONC RET WALL
 @ @
 50 40
 4.00 4.32
 194.82 194.50

AT @ ON
 CONC RET WALL
 @ @
 50 40
 6.79 6.89
 192.03 191.93

BAY RD SHARON
 Inst. Tape Wthr & Temp. Date Crew
 LEVEL Cloth SUNNY 40± 3/13/91
 PRISCO
 Leon F
 Gentry
 CAREY

113

GRASS
 40 50 60
 5.6 5.2 5.0
 193.2 193.6 193.86

ON RT WALL @ ETW ETW
 35 ON 30 23 18 0
 4.50 4.53 6.6 6.94 6.95 6.41
 194.32 194.29 192.2 191.88 191.87 192.41

@ @ WALL ETW ETW
 31.5 ON 30 25 18 0
 4.6 4.51 6.8 6.93 6.92 6.35
 194.22 194.31 192.02 191.89 191.90 192.47

ON ETW ETW
 4.46
 194.36

ON @ WALL ETW ETW
 31.5 30 25 18 0
 6.86 6.8 6.93 6.92
 191.96 192.0 191.89 191.90

116 / XSECTIONS COBBS CORNER

Inst. Tape Wthr & Temp. Date Crew

1486

198.82^v

9+30 LT
BEGIN ASPH
CURB

9+41 RT
EXTRA XSECTION
TRAV SIDEWALK

	<u>0</u>	<u>1</u>	<u>19</u>
	5.82	5.80	5.75
	193.00	193.02	193.07

9+49 RT
WATER GATE

	<u>0</u>		WG
			25.5
			5.62
			193.20

9+50 RT

	<u>0</u>	<u>1</u>	<u>19</u>
	5.71	5.69	5.53
	193.11	193.13	193.29

9+50 LT

	<u>60</u>	GRASS
	1.4	<u>50</u>
		21
	197.4	196.7

BAY RD SHARON 117³⁰

Inst. Tape Wthr & Temp. Date Crew

level

cloth

SUNNY

40°

3/13/91

FRISCO
Leone
Genitti
CAREW

		on	@	
<u>40</u>	<u>30</u>		<u>17.5</u>	<u>0</u>
3.4	4.9	6.06	6.46	6.00
195.4	193.9	192.76	192.36	192.82

@ GRAN CURB <		S.W	7 EDGE	
<u>24.5</u>	<u>on</u>	<u>30</u>	<u>36</u>	<u>50</u>
5.85	5.28	5.05	5.90	4.7
192.97	193.54	193.77	193.92	194.1

			@ CURB on	
<u>30</u>	<u>40</u>	<u>50</u>	<u>58</u>	<u>59</u>
5.53	5.55	5.71	5.77	5.33
193.29	193.27	193.11	193.05	193.49

		on CURB @		
<u>40</u>	<u>30</u>	<u>0</u>	<u>18.5</u>	<u>0</u>
3.6	5.2	5.67	6.15	5.71
195.2	193.6	193.15	192.67	193.11

56 118 / X SECTIONS COBBS CORNER
 Inst. Tape Wthr & Temp. Date Crew
 1486

BAY RD.

19882^v
 X

PRO FILE

9+62 RT

CALL 0+0

BAYBERRY LANE

0	étw 1
5.55	5.55
193.27	193.27

PRO FILE

BAY RD

10+0

0	étw
5.07	5.07
193.75	193.75

BAY RD SHARON
 Inst. Tape Wthr & Temp. Date Crew
 Level cloth SUNNY 40° 3/13/91 119
 PRISCO
 LOUIS
 GENTH
 CREW

19	< 2	100	150	200
5.39	5.37	5.64	6.15	6.90
193.43	193.45	193.18	192.67	191.92

10+50	étw	11+0	étw	11+50	étw
0	0	0	0	0	0
4.49	4.49	3.39	3.39	2.31	2.31
194.33	194.33	195.43	195.43	196.51	196.51

-0.59

198.23^v

B.M. R.O.C. BOT BRICK

STEP HSE #98

ELEV 198.21

STA 10+24 LT 60'

NB 338 PG 138

54 120 / X SECTIONS COBBES CORNER
 Inst. 1486 Tape Wthr & Temp. Date Crew

NORTH MAIN ST. SHARON 121 ft
 Inst. Level 1 Tape CL 8-T H Wthr & Temp. Cloudy 38° Windy Date 3/14/91 Crew PRISCO Leone Genitt CAREW

+4.40

~~175.34~~

BAY RP
 1+53.61 =

$\frac{0+0}{6.26}$ N. MAIN ST
 169.08

0+38.5 LT
 BEGIN CONC ISLAND

0+50 LT

$\frac{28}{4.44}$
 170.90

0+50 RT

$\frac{0}{6.46}$ @ CURB
 168.88 167.84 168.08

0+57.5

@ CURB
 $\frac{0}{5.50}$
 169.84

0+58

on
 $\frac{0}{4.98}$
 170.36

0+67 LT
 CENTER ISLAND

@ GRAN CURB on
 $\frac{5.5}{5.05}$ 5 1.5
 170.29 170.65 170.55

T.P. CHIS SQ CONC
 ISLAND ELEV (170.94)

NB 330 pg 138

$\frac{28}{4.47}$ @ on on @
 170.87 170.11 179.49 170.45 170.00 169.52 168.64

@ on @ CURB
 $\frac{8}{5.18}$ 7.5 5 2.5 on 2
 170.16 170.54 170.48 170.40 169.90 169.71

50 75
 7.6 90
 167.7 166.3

on @
 $\frac{0}{4.87}$ 1.5 2
 170.47 170.40 169.92

122 / X SECTIONS COBB'S COR

Inst. Tape Wthr & Temp. Date Crew

486

175.34 ✓

0+95
END CONC
ISLAND

GRAN CURB
@ 07 07
1.5 1 0
5.03 4.59 4.63
170.31 170.75 170.71

1+0 RT

CURB
0 26 07
5.06 6.10 5.93
170.28 169.24 169.41

1+0 LT

75 50
0.8 2.8
174.5 172.5

3.09

173.09 ✓

1+19 RT
WATER GATE

WG
13 0
330
169.79

NORTH MAIN ST SHARON 123 1/2

Inst. Tape Wthr & Temp. Date Crew
Level cloth cloudy 38 3/14/91
PRISCO
CAPWAT
Leone
Genitti

07 @
1 1.5
470 5.10
170.64 170.24

50 75
7.5 7.9
167.8 167.4

BK SW CURB @ C+W
35.5 07 29 4.5 0
4.28 4.70 5.14 5.07
171.06 170.64 170.20 170.27

5.34 T.P. SPK Pole # 37
170.00

124 / X SECTIONS COBBS CORNER
 Inst. Tape Wthr & Temp. Date Crew

Inst. 486

173.09 ✓
~~X~~

1+25 RT
 END ASPH CURB

<u>0</u>	<u>23</u>	on
2.72	3.89	3.81
170.37	169.20	169.28

1+25 LT
 M.H

RIM	<u>0</u>
<u>8.5</u>	
2.90	
170.19	

1+31 LT
 D.M.H

RIM	<u>0</u>
<u>19.5</u>	
3.31	
169.78	

1+31.5 LT
 CATCH BASIN
 & GRAN HEADER

	s.w
<u>50</u>	<u>30</u>
1.1	2.77
172.0	170.32

1+50 RT
 E+V
0
 2.85
 170.24

ETW
20
 3.77
 169.32

30
 4.5
 168.6

NORTH MAIN ST SHARON 125 1/2
 Inst. Tape Wthr & Temp. Date Crew
 LEVEL Cloth cloudy windy 38° 3/14/91 PRISCO Leone CAREW

<u>30</u>	<u>50</u>	<u>75</u>
4.1	5.3	5.4
168.99	167.8	167.7

	on	RIM @ HEAD	E+V	
<u>25.5</u>		<u>3.41</u>	<u>1.5</u>	<u>0</u>
3.98	2.98	3.41	7.70	2.74
169.11	170.11	169.68	165.39	170.35

<u>50</u>	<u>60</u>
5.4	5.5
167.7	167.6

126 / X SECTIONS CORBBS CORNER
 Inst. 486 Tape Wthr & Temp. Date Crew

173.09
 /
 /

1750 LT

60 50
 0.8 1.7
 172.3 171.4

1760 LT

END ASPH
 CURB

60
 0.7
 172.4

1775 LT

DR. WAY

60
 0.80
 172.29

1784 LT
 GAS GATE

G.G.
 34
 3.06
 170.03

1790 LT

BEGIN ASPH
 CURB

40
 2.8
 170.3

NORTH MAIN ST. SHARON
 Inst. Tape Wthr & Temp. Date Crew
 Level cloth P.G. windy 45° 3/20/91 PRISCO LEONE CAREW 127

BK S.W. 07 @ CURB RIM
 30 24.5 MH 20.5 0
 2.85 3.04 3.29 3.26
 170.24 170.05 169.80 169.83

BK SW on CURB @ ETW
 50 30 24.5 0
 1.8 3.02 3.16 3.31 2.89
 171.3 170.07 169.93 169.78 170.20

E DRIVE 7 BK S.W. ETW ETW
 50 39 30 24.5 0
 1.91 29.5 3.14 3.43 2.98
 171.18 170.14 169.95 169.66 170.11

BK S.W. on CURB @ ETW
 30 24.5 0
 3.14 3.30 3.56 3.11
 169.95 169.99 169.53 169.98

128

128 / XSECTIONS COBBS CORNER
 Inst. Tape Wthr & Temp. Date Crew

486

173.09
 ^

	ETW	ETW	Z6	30
Z+0 RT	0	19		
	3.15	3.54	3.7	4.2
	169.94	169.55	169.4	168.9

	GRASS	
Z+0 LT	60	50
	0.2	0.7
	172.9	172.4

	ETW	ETW	Z
Z+33 RT	0	19	23
↳ DRIVE	3.27	3.46	3.22
	169.82	169.63	169.87

	RIM	
Z+36.5 LT	21	0
M.H.	3.77	
	167.32	

	WG.	
Z+42.5 LT	29	0
W.G.	3.20	
	169.89	

	WG.	
Z+44 LT	29.5	0
W.G.	3.15	
	169.94	

NORTH MAIN ST SHARON

129

Inst. Tape Wthr & Temp. Date Crew
 Level cloth P.C. HS Date
 PRISCO
 Leane
 CREW

	40	50	60
	5.7	7.2	7.5
	167.4	165.9	165.6

	BKS. W		ON CURB @	
	40	30	24.5	0
	2.1	3.11	3.24	3.64
	171.0	169.98	169.85	169.45

	↳ DRIVE			
	30	40	50	60
	4.16	4.92	5.71	6.44
	168.93	168.17	167.38	166.65

130 X SECTIONS COBBS CORNER

Inst. Tape Wthr & Temp. Date Crew

486

17309^v

	ETW	APRON		
2+50 RT	<u>0</u>	<u>19</u>	<u>20</u>	<u>30</u>
	3.30	3.62	3.48	7.0
	169.79	169.47	169.41	169.1

2+50 LT	<u>60</u>	<u>50</u>	<u>40</u>
	1.0	1.7	1.7
	172.1	171.4	171.4

2+58 LT	RIM	
CATCH BASIN	<u>24</u>	<u>0</u>
	3.94	
	169.15	

2+80 RT	<u>0</u>	<u>33</u>	RIM
WATER GATE	3.31	5.0	W.G.
	169.78	168.1	168.33

3+0 RT	ETW	ETW	ASPH	END
	<u>0</u>	<u>17.5</u>	<u>21</u>	<u>25</u>
	3.33	3.78	3.52	4.00
	169.76	169.31	169.59	169.09

NORTH MAIN ST SHARON

Inst. Tape Wthr & Temp. Date Crew

Level

cloth

P.C.

450

3/29/71

131^u
PRISCO
leone
CAREW

	GRASS		
	<u>33</u>	<u>40</u>	<u>50</u>
	5.1	5.8	6.5
	168.0	167.3	166.6
			<u>60</u>
			7.4
			165.7

BK S.W.	on	CURB	@
<u>30</u>		<u>24.5</u>	<u>0</u>
3.10	3.33	3.84	
169.99	169.76	169.25	

	GRASS		
	<u>30</u>	<u>40</u>	<u>50</u>
	4.78	5.7	6.3
	168.31	167.4	166.8
			<u>7</u>
			6.0
			7.3
			165.8

132 / X SECTIONS COBB'S CORNER
 Inst. 486 Tape Wthr & Temp. Date Crew

173.09 ✓
 ^

	60	56	52.5	50	40
3+0 LT	60	56	52.5	50	40
EVD ASPH	0.1	0.74	0.94	1.3	2.3
CURB	173.0	172.35	172.15	171.8	170.8

conc with @
 on +

+ 3.18

175.12 ✓
 ^

	60	3.30	171.82
3+11 LT	60	3.30	171.82
1/2 DRIVEWAY			

	40	4.7	170.4
3+22 LT	40	4.7	170.4
BEGIN ASPH			
CURB			

	0	20	20	6.48
3+27 RT	0	20	20	6.48
WATER GATE	5.33	5.5		
	169.79	169.2	168.64	

NORTH MAIN ST. SHARON 133
 Inst. Level Tape cloth Wthr & Temp. P.C. Date 3/28/91 Crew PRISCO Leone CAREW

	30	3.26	169.83
BK.S.W	30	3.26	169.83
on CURB @	24.5	3.75	
	0		
	169.64	169.34	

- 1.15

171.94 ✓

T.P. Top HYD SPINDLE

	50	40	30	24	0
BK.S.W. ETW	50	40	30	24	0
	3.93	4.25	5.31	5.76	5.36
	171.19	170.87	169.81	169.36	169.76

	30	24	24	0
BK.S.W on CURB @	30	24	24	0
	5.43	5.59	5.78	5.33
	169.69	169.53	169.34	169.79

134 / X SECTIONS COBBS CORNER
 Inst. Tape Wthr & Temp. Date Crew
 /486

175.12^v
 ^

3+45 LT 40
 END Asph 4.7
 CURB 170.4

3+50 LT 60 50
 ASK BACK 4.02 4.41
 CONC RET WALL 171.10 170.71

60 50
4.62 5.0
 170.50 170.1

3+50 RT 0 18 @ APRON on 19
6.15 5.93
 168.97 169.19

3+50 LT 60
4.8
 170.3

NORTH MAIN ST. SHARON 135
 Inst. Tape Wthr & Temp. Date Crew
 level cloth P.C. 45° 3/20/91 PRISCO
 LEONE
 CAREW

OKS.W on @ E+W
30 24.5 0
5.50 5.58 5.88 5.32
 169.62 169.54 169.24 169.80

on @
40 30 24.5 0
4.88 5.04 5.58 5.95 5.31
 170.24 170.08 169.54 169.17 169.81
 @
40
5.40
 169.72

23 30 40 50 60
5.7 6.9 7.7 8.5 9.0
 169.4 168.2 167.4 166.6 166.1

END Asph 43 30 E+W
5.31 5.60 5.96 0
 169.9 169.81 169.52 169.16

136 / X SECTIONS COBBS CORNER

Inst. 4/6 Tape Wthr & Temp. Date Crew

175.12 ✓
^

	on		WALL
	60		50
	4.8		5.0
3766 LT	170.3		170.1

ASK BACK	@		@
STONE MASON	60		50
WALL	2.41		3.25
	172.71		171.87

	60	50	40
3768 LT	1.6	2.9	3.9
BEGIN ASPH	173.5	172.2	171.2
CURB			

	W.G		0
	27.5		
	5.65		
3778 LT	169.47		
WATER GATE			

	RIM		0
	20.5		
	5.83		
3785 LT	169.29		
D.M.H			

NORTH MAIN ST SHARON

137 1/4

Inst. Tape Wthr & Temp. Date Crew
Level Cloth P.C. 4.5° 3/20/91 PRISCO
Leone
601177

	40	on WALL + CURB	@ WALL	ETW	ctw
	534	30.5	30.5	24	0
	169.78	4.98	5.57	6.02	530
		170.14	169.55	169.10	169.82

	@				
	40				
	4.34				
	170.78				
CURB	on	BKSW	on CUR	@	
30.5		30		24	0
5.14	5.14	5.55	5.73	6.01	5.29
169.98	169.98	169.57	169.39	169.11	169.83

138 / X SECTIONS COBBS CORNER

Inst. 486 Tape Wthr & Temp. Date Crew

175.12^v

3786.5 RT CATCH BASIN	ETW 0 5.28 169.84	RIM 20.5 6.12 169.00	on HEADY 5.58 169.54
--------------------------	----------------------------	-------------------------------	-------------------------------

3793 LT GAS GATE	G.G. 27 5.72 169.40	0
---------------------	------------------------------	---

3795 RT END ASPH APRON	ETW 0 5.25 169.89	@ 19.5 5.89 169.23	20.5 5.75 169.37
------------------------------	----------------------------	-----------------------------	------------------------

470 RT	ETW 0 5.23 169.89	ETW L 19 5.84 169.28	ASPH 23 5.66 169.46
--------	----------------------------	-------------------------------	------------------------------

470 LT	60 0.9 174.2	50 2.7 172.4	40 4.0 171.1	on 31 5.08 170.04	on 5.14 169.98
--------	--------------------	--------------------	--------------------	----------------------------	----------------------

NORTH MAIN ST SHARON

139^B

Inst. Level Tape Cloth Wthr & Temp. P.C. 45° Date 3/20/91 Crew PRISCO leone CAREW

on 21 5.54 169.58	30 6.3 168.82	50 7.9 167.22
----------------------------	---------------------	---------------------

30 6.6 168.5	50 8.1 167.0
--------------------	--------------------

DR. 30 6.33 168.79	END7 39 7.02 168.10	50 7.9 167.25	60 8.4 166.7
-----------------------------	------------------------------	---------------------	--------------------

GRAN CURB 30.5 5.68 169.44	@ ASPH 01 5.84 169.28	CURB @ 24.5 6.03 169.09	RIM B.M.H 20.5 5.88 169.24	0
--	--------------------------------	----------------------------------	--	---

190 / X SECTIONS CORBS CORNER
 Inst. 486 Tape Wthr & Temp. Date Crow

175.12^v
 K

4+08.5 LT
 CATCH BASIN

RIM
 24.5
 6.12
 169.00

PROFILE NORTH MAIN

4+50
 0
 4.97
 170.15

5+0
 0
 4.03
 171.09

5+50
 0
 2.51
 172.6

6+0
 0
 0.88
 174.24

+ 5.87
 178.87^v
 K

NORTH MAIN ST. SHARON 1413
 Inst. Lere Tape Cloth Wthr & Temp. PL 45° Date 3/20/91 Crow PRISCA LEONE CAREW

-2.12 173.00^v T.P. METAL POST

-2.96 175.91^v (14X1) Elev (175.903)

SEE SHARON ELEVATION BOOK
 IN OFFICE NORTH MAIN ST.
 SWLY COR 2ND CONC STEP FROM TOP
 HSE #430

Inst. Tape Wthr & Temp. Date Crew

+ 5.84

176.78
^

BAY RD. 1+76.42 =

0+0 SHARON ST.

0
6.58
170.20

	@	on	on	@
0+30 RT.	0	0.5	1.0	1.5
Bez. Conc. Island	6.32	5.98	5.90	6.22
	170.46	170.80	170.88	170.56

	@	on	on	@
0+32	0.5	0	1.5	2
on Conc Island	6.31	5.90	5.86	6.20
	170.47	170.88	170.92	170.58

	@	on	on	on	@	
0+50	25	5.5	2.5	2.5	0	3.5
Conc Island	7.58	6.53	6.27	5.92	5.90	5.80
	169.20	170.25	170.51	170.86	170.88	170.98

curb on	Grd.	on	Conc	curb
76.5	67	53	52.5	52.5
8.99	8.8	8.76	8.76	9.25
167.79	168.0	168.02	168.02	167.53
	Asph	0	Conc	curb
	80	77	77	
	9.65	9.46	9.00	
	167.13	167.32	167.78	

TP Chis Sq. Set in conc.
Island Sharon St.
side Elev. 170.94 NB 338/138

@	@	on	@	on	on	@
3.5	25	42	42	58.5	58.5	60
6.00	6.03	5.81	5.28	4.37	3.80	3.78
170.98	170.95	170.97	171.50	172.41	172.98	173.00
					Asph	70
						3.40
						173.38

144

CROSS SECTION 5

Inst. 144/486 Tape Wthr & Temp. Date Crew

176.78
^

	@	on	on	on
0+70.5	1.5	1	0	1
End Conc	6.09	5.70	5.68	5.77
Island	170.69	171.08	171.10	171.01

+ 1.44 176.95
^

0+76.5LT	60	48.5	40
ASK AHEAD	7.79	7.2	7.2
AT & on conc	169.16	169.8	169.8
CURB		on	40

0+77 LT		48.5	40
ASK AHEAD		7.12	7.12
on & AT CONC		169.83	169.83

	on	CURB
	48.5	40
	7.12	7.11
	169.83	169.84

	@ CURB	
	48.5	40
	7.58	7.57
	169.37	169.38

SHARON ST. & STOUGHTON

145

Inst. Tape Wthr & Temp. Date Crew

@
1.5
6.00
170.78

- 1.27 175.51 T.P. Top spindle Hyd.
(@ Friendly Rest.)

@	on	@	ETW	LTW	0
32.5		30	23.5	4.5	0
7.71	7.25	7.65	7.59	6.46	6.27
169.24	169.70	169.30	169.36	170.49	170.68

on
7.3
169.7

32.5	on	ETW		
7.18	30	25.5	4.5	0
169.77	7.24			
	169.71			

32.5	@	
7.62	30	
169.33	7.65	
	169.30	

146 / X SECTIONS COBBS CORNER
 Inst. 486 Tape Wthr & Temp. Date Crew

176.95 ✓
 ^

0+80 RT
 D.M.H

0

RIM
 10
 6.53
 170.42

0+82 RT

CATCH BASIN

E CONC HEADER

0
 6.28
 170.67

RIM on con
 HEADER
 20.5 21
 7.14 6.49 6.43
 169.81 170.46 170.52

0+90 RT
 END ASPH
 CURB

0
 6.73
 170.72

@ CURB on CURB
 18 18 28
 6.78 6.38 5.69
 170.17 170.59 171.26

0+92 RT
 END CONC
 CURB

0
 6.73
 170.72

ETW @ on
 17.5 27.5
 6.72 5.66 5.17
 170.23 171.29 171.78

0+95 RT
 WATER GATE

0

W.G
 41
 4.79
 172.16

SHARON ST STOUGHTON
 Inst. Level Tape Cloth Wthr & Temp. P.C. Date 3/26/91

147 / 36
 PRISCO
 LEONG
 GENITT,
 CAREW

@ conc CURB on+ RT @+on
 30.5 31 40.5 41 60
 5.78 5.21 5.20 4.66 4.63 5.03 4.22
 171.17 171.74 171.75 172.29 172.32 171.92 172.99

on @
 28 28
 5.14 5.66
 171.81 171.29

148 / X SECTIONS COBBS CORNER

Inst. 486 Tape Wthr & Temp. Date Crow

176.95 ✓
 \swarrow

170 RT $\frac{0}{6.08}$ $\frac{15.5}{6.53}$ $\frac{25}{5.68}$ ASPH $\frac{40}{4.81}$
 170.87 170.42 171.27 172.14

170 LT $\frac{60}{7.70}$ $\frac{50}{7.46}$ $\frac{40}{7.21}$
 169.25 169.49 169.74

1710.5 LT RIM C.B. & ENTRANCE $\frac{60}{7.50}$ $\frac{50}{7.33}$
 169.45 169.62

1719.5 LT ATE on CONC CURB $\frac{50}{7.22}$ @ $\frac{32.5}{6.77}$
 169.73 170.18

1720 LT on & AT CONC CURB on $\frac{32.5}{6.27}$ on+AT $\frac{32.5}{6.21}$
 170.68 170.74

SHARON STREET STOUGHTON 149

Inst. level Tape cloth Wthr & Temp. Date Crew
 48° 3/26/91 KILCO
 CAREW
 GENTH

DR $\frac{50}{4.33}$ $\frac{60}{3.98}$
 172.62 172.97

$\frac{30}{7.08}$ $\frac{ETW}{21.5}$ $\frac{ETW}{3}$ $\frac{ETW}{0}$
 7.04 6.15
 169.87 169.91 170.80

$\frac{40}{7.07}$ $\frac{25}{6.78}$ RIM $\frac{20.5}{7.00}$ $\frac{ETW}{3}$ $\frac{ETW}{0}$
 6.00 5.95
 169.88 170.17 169.95 170.95 171.00

conc CURB @ $\frac{ETW}{18}$ $\frac{ETW}{3}$ $\frac{ETW}{0}$
 $\frac{30}{6.62}$ $\frac{22.5}{6.61}$ $\frac{6.60}{5.90}$ $\frac{5.86}{5.86}$
 170.33 170.34 170.35 171.05 171.09

CURB $\frac{30}{6.24}$ on $\frac{07}{6.26}$
 170.71 170.69
 on+AT $\frac{30}{6.22}$ on+AT $\frac{22.5}{6.23}$ SAME
 170.73 170.72

4-150 X SECTIONS COBBS CORNER

Inst. 486 Tape Wthr & Temp. Date Crew

1725 RT 0 176.95
~~176.95~~
 WG
37
 4.45
 172.50

1726 0 13 25
 BEGIN CONC 5.82 6.17 4.78
 ISLAND 171.13 170.78 172.17

1728 RT 0 13 24 27.5
 AT + on 5.81 6.10 4.79 4.67
 CONC CURB 171.14 170.85 172.16 172.28
07 24 07
 4.17 4.21
 172.78 172.74

1728.5 RT
 07 + AT CONC 0 13 13 24
 CURB 5.81 6.05 5.61 4.79
 171.14 170.90 171.34 172.16

1729 LT 30 25 TEL.M.H. 07
 TEL.M.H. 6.0 6.0 22 19.5
 5.87 5.87
 171.0 171.0 171.15 171.08

SHARON ST. STOUGHTON 151 36

Inst. level Tape C Lot H Wthr & Temp. P.C. 486 Date 3/26/91 Crew PRISCO LOONE GONTH CAKEW

CONC @ + on @ + on
39 60
 4.31 3.73
 172.64 173.22

07 07 + AT 07 @
24 27.5 28 28
 4.17 4.22 4.20 4.67
 172.78 172.73 172.75 172.28

07 CURB @ ETW
19 25 0
 5.87 6.35 5.81 5.80
 171.08 170.60 171.14 171.15

152/ X SECTIONS COBBS CORNER

Inst. 486 Tape Wthr & Temp. Date Crew

176.95
^

1745.5 RT

GASOLINE

FILLER

GAS
FILLER

38.5

4.37

172.48

1750 RT

0
5.60
171.35

@ ASPH
CURB

on

@

on

12
5.76

12
5.31

24
4.72

4.11

171.19 171.64 172.23 172.84

1750 LT

60
7.19
169.76

50
7.09
169.86

40
6.98
169.97

@ CURB on

35.5

35.5

35

6.92

6.59

6.52

170.03 170.36 170.43

@ + on

↑
REVERSE
↓

1749.5 LT

ASK AHEAD

AT & CONC
CURB.

50
7.04
169.91

@ CURB on

33

6.51

170.44

6.13

170.82

1750 LT

ASK AHEAD

ON + AT
CONC CURB

on CONC
CURB

28

5.94

171.01

on

19.5

5.56

171.39

@ CONC
CURB

28

6.34

170.61

@

19.5

5.92

171.03

SHARON ST

STOUGHTON

153

Inst. Tape Wthr & Temp. Date Crew

Level

cloth

P.C.

48°

3/26/97

PRISCO
Leone
Genetti
Leone

on

AT

24.5

4.72

172.83

AT

on

28.5

4.07

172.88

CONC CURB

on

29

4.07

172.88

AT

4.50

172.45

@ + on

CONC

39.5

4.35

172.60

@ CONC

ISLAND (PUMPS)

50

4.08

172.87

on

AT

25

5.8

171.2

on

AT

18

5.52

171.43

on

18

5.52

171.43

@

17.5

5.96

170.99

@ + w

Z

5.58

171.37

0

28

5.96

170.99

@ + on

19.5

5.56

171.39

on

18

5.52

171.43

@

18

5.91

171.04

@ + w

0

0

0

154 / X SECTIONS COBBS CORNER

Inst. / 486 Tape Wthr & Temp. Date Crew

176.95 ✓
^

176.94 ✓
^

+6.00

	60	50	40
1776 LT	7.01	6.79	6.47
ENTRANCE	169.93	170.15	170.47
E.W.G.			

1777 RT	0	W.G.
WATERGATE		4
		5.55
		171.39

1782 LT	W.G.	0
WATER	14	
	5.77	
	171.17	

1789 RT	0	W.G.
WATERGATE		22
		4.63
		172.31

SHARON ST STOUGHATON 155

Inst. Level Tape Etoth Wthr & Temp. PC 488 Date 3/26/91 Crew PRISCO LEONE CARLUCCI (GEBITT)

-6.02

170.93

T.P. CHIS SQ SET CONC
ISLAND SHARON ST SIDE

ELEV (170.94) 338/138
USE

25	W.G.	ETW	ETW	0
6.03	21.5	15	2	5.39
170.91	5.99	5.80	5.39	5.39
	170.95	171.14	171.55	171.55

156 X SECTIONS COBB'S CORNER
 Inst. 486 Tape Wthr & Temp. Date Crew

176.94

		@ CURB on	@ CONC CURB on	
Z+0 RT	<u>0</u>	<u>11.5</u>	<u>24</u>	
	5.20	5.50	4.45	4.00
	171.74	171.34	171.92	172.49

			@ CONC CURB on	@+on
Z+0 LT	<u>60</u>	<u>50</u>	<u>34</u>	<u>33.5</u>
	6.80	6.51	5.83	5.40
CONC CURB	170.14	170.43	171.11	171.54
				171.57

	WG.	
Z+13 LT	<u>17</u>	<u>0</u>
WATER GATE	5.51	
	171.43	

		GAS FILLER
Z+15 RT	<u>0</u>	<u>38.5</u>
GASOLINE FILLER		4.42
		172.52

		@ ASPH CURB on
Z+20 RT	<u>0</u>	<u>11.5</u>
END ASPH CURB		5.27
		171.67
		172.09

SHARON STREET STOUGHTON 157
 Inst. Level Tape Cloth Wthr & Temp. P.C. 48 Date 3/26/77 Crew PRISCO LEONE GONITTI CAREY

	@+on	on	@	@+on CONC	@ ISLAND PUMP
ST. AT	<u>24.5</u>	<u>28.5</u>	<u>29</u>	<u>29</u>	<u>50</u>
	4.00	3.79	3.98	4.40	4.35
	172.94	172.95	172.96	172.54	172.59
					172.79

	@+ CONC CURB	@	ETW	ETW	
Z5	<u>21</u>	<u>01</u>	<u>20.5</u>	<u>15</u>	<u>0</u>
	5.1	5.16	5.17	5.58	5.17
	171.8	171.78	171.77	171.36	171.32
					171.77

@CURB
<u>24.5</u>
4.43
172.51

158 / X SECTIONS COBBS CORNER

Inst. / 426 Tape Wthr & Temp. Date Crew

176.94^v

2+22 RT	0	115	25	on	on +
END CONC	5.11	5.33	4.55	3.91	25.5
CURB	171.83	171.61	172.39	173.03	173.03

2+22.5 RT	0	ETW	on	on
on AT	5.11	5.33	3.91	27.5
con CURB	171.83	171.61	173.03	172.99

@	@
25	27.5
4.60	4.53
172.34	172.41

2+22.5 LT	60	50	@ CURB on	@
	6.88	6.41	4.5 4.5	4.5
	170.06	170.53	5.89 5.40	171.54

SHARON STREET SToughton 159

Inst. Tape Wthr & Temp. Date Crew

LEVEL CLOTH PC 48° 3/26/91 PRISCO Leone Genetti CREW

on +	on	@	on conc	
27.5		28.5	40	60
3.95	3.93	4.45	4.32	4.06
172.99	173.01	172.49	172.62	172.88

@ on	CURB	on AT	on CURB	@	ETW	
40	25	18		17.5	2.5	0
5.46	4.7	4.87	4.87	5.22	5.06	
171.48	172.2	172.07	172.07	171.72	171.88	

(CONTINUED SEE NB 538 PG 2)

160/486

Inst.

Tape

Wthr & Temp.

Date

Crew

Difference
Elevation

30.1

30.8

31.5

32.1

32.8

33.5

34.1

34.7

35.4

36.0

36.6

37.2

37.7

38.3

39.0

39.4

39.9

40.5

41.0

42.0

41.9

42.4

42.9

43.3