

NORFOLK COUNTY
ENGINEERS DEPT.

No. 428

F. B. 428

Property of NORFOLK COUNTY

ENGINEERS DEPT.

Address

649

~~630~~ HIGH ST.

DEDHAM, MASS.

Telephone

~~326-1600 - EXT 331 332~~

781-461-6128

This Book is manufactured of a High Grade 50% Rag Paper having a Water Resisting Surface, and is sewed with Nylon Water-proof Thread.

This book is manufactured of a High Grade
50% Rag Paper having a Water Resisting
Surface, and is sewed with Nylon Water-
proof thread.

Property of _____
Address _____
Telephone _____

Inst.

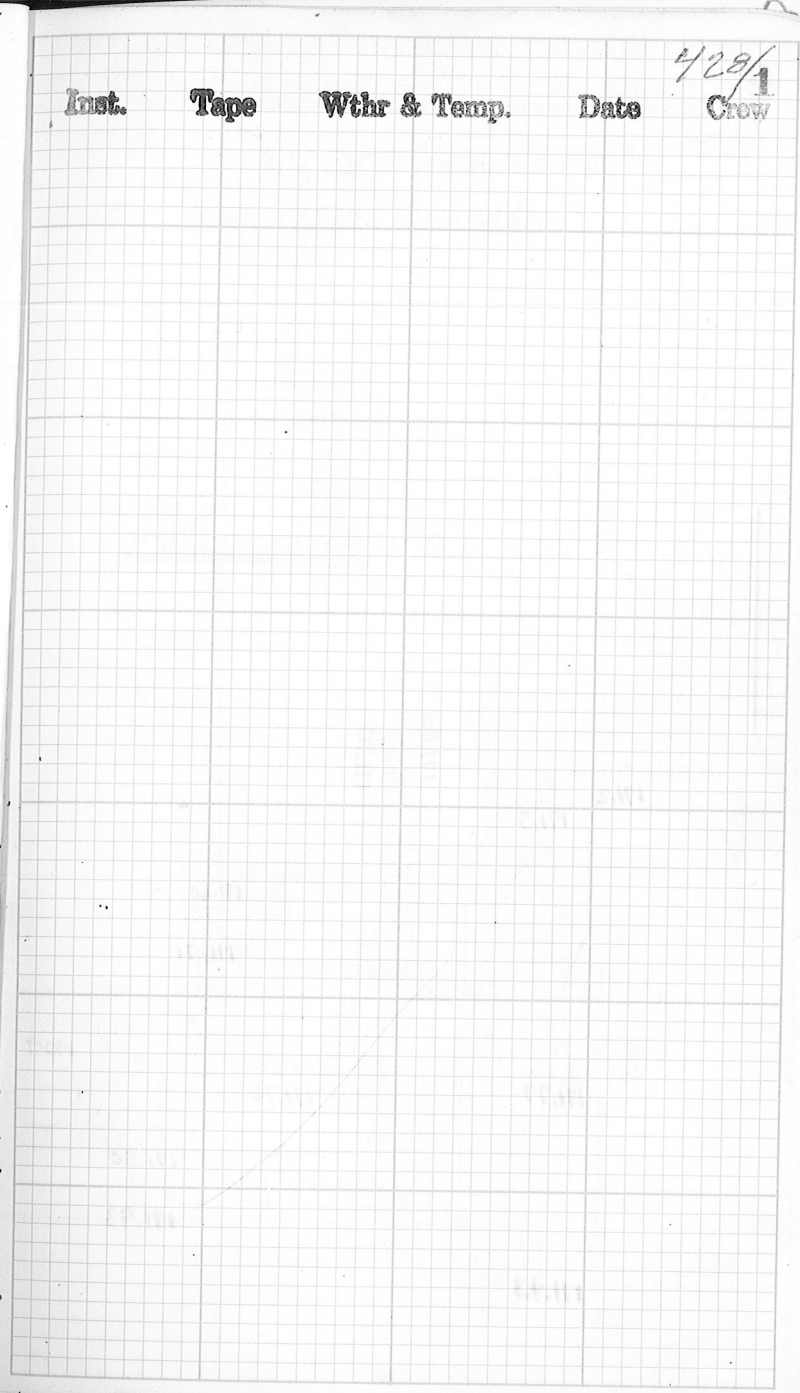
Tape

Wthr & Temp.

Date

Crow

4/28/1



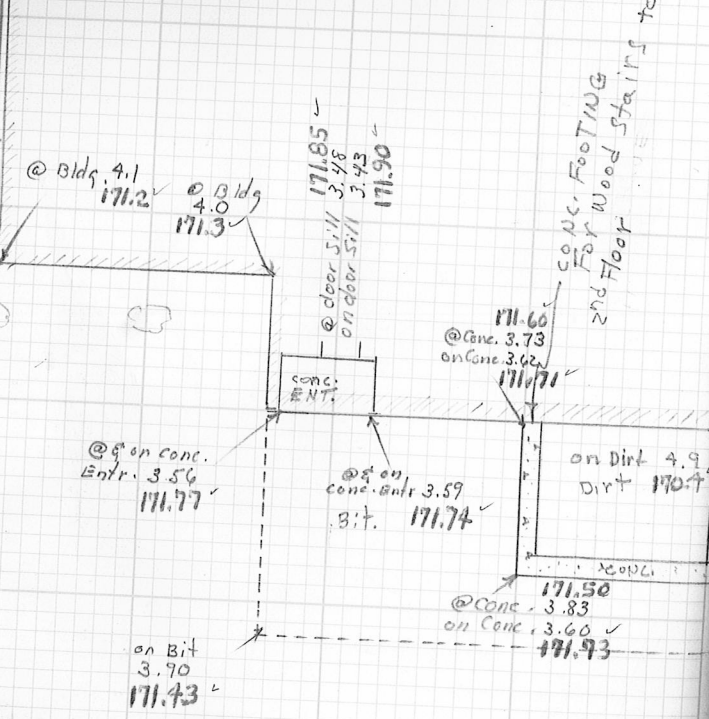
GRID ELEVATIONS & NORFOLK COUNTY
 2/ SKETCH FOR OBTAINING KEY

1428

$$+4.26 \quad \frac{175.33}{\times}$$

SEE PGS. 415

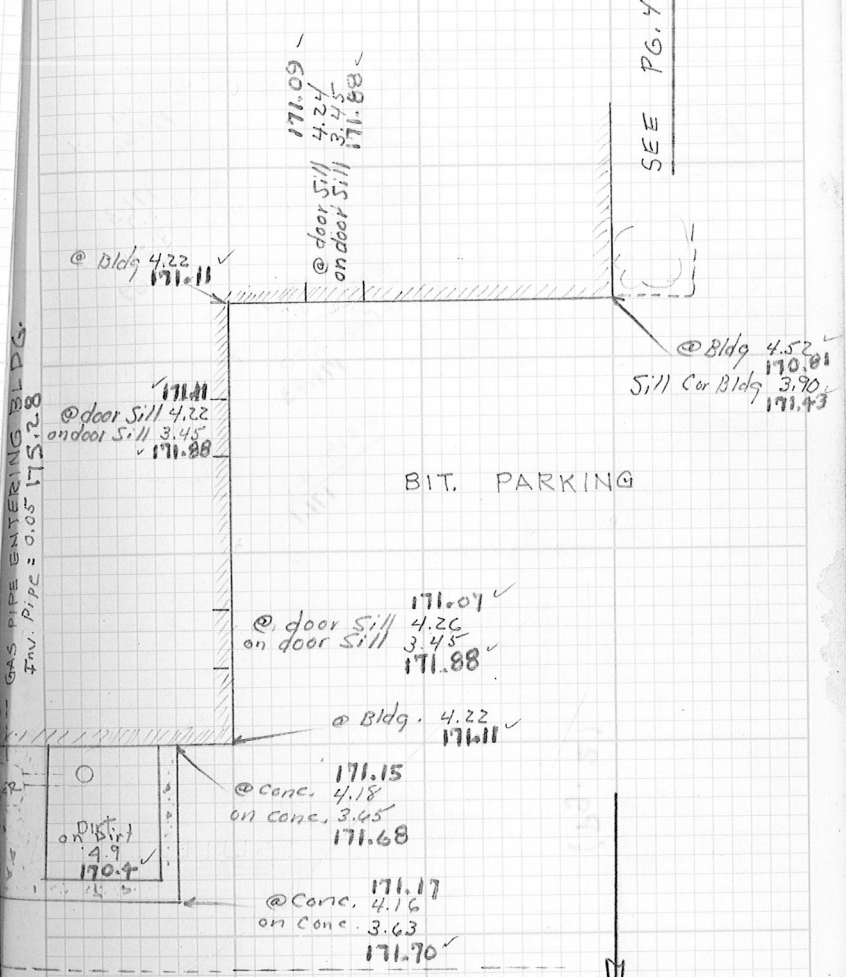
BUILDING #4



AGRICULTURAL SCHOOL - WALPOLE
 ELEVATIONS - NLY. SIDE BLDG. #4 3

B.M. 171.07 Chis. Sq. Loc. 1st Conc. Step NELY
 Side Kemp Bldg. #3 425/4

- 4.26 B.M. 171.07 (See Above)



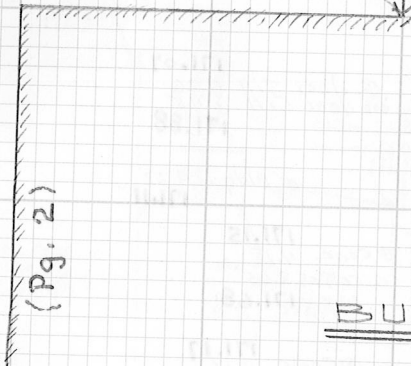
A.P.

GRID ELEVATIONS & NORFOLK COUNT
 SKETCH FOR OBTAINING KEY

428
 428

+3.43

175.23



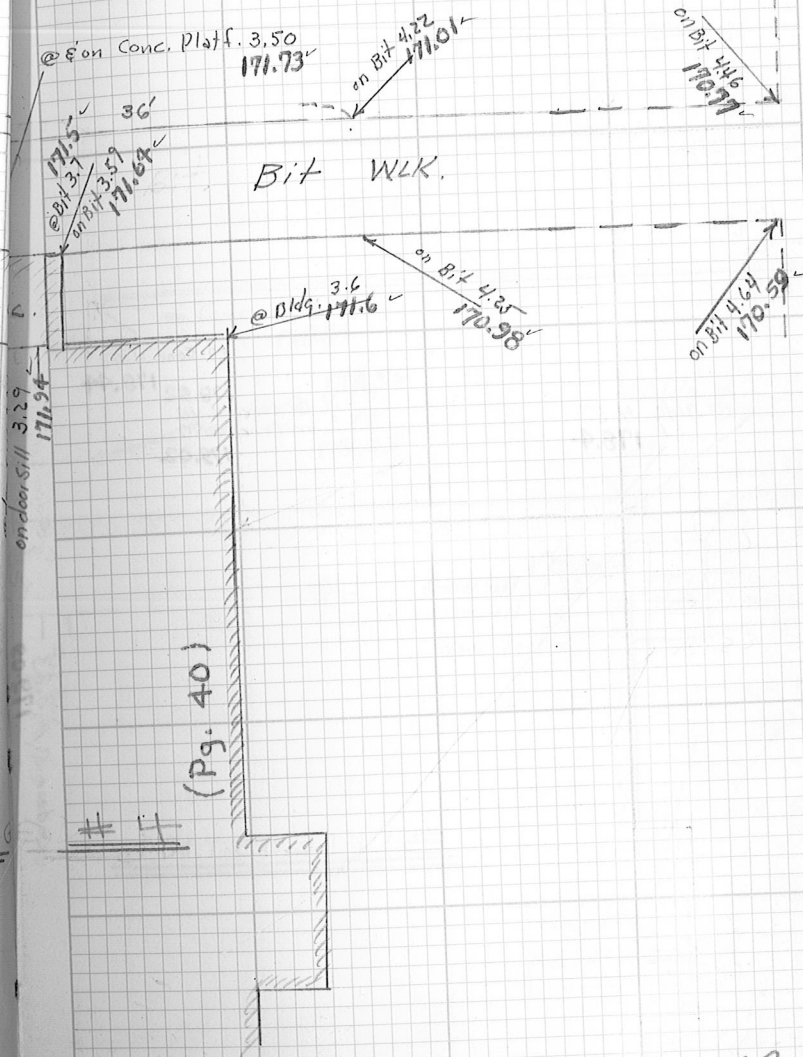
BUILDING # 4

AGRICULTURAL SCHOOL & WALPOLE
 ELEVATIONS - ELY. SIDE BLDG. #4

5

B.M. 171.80 Small Chis. Sq., Loc., Conc. Windows sill
 NEly Side Cafe. Bldg #4 428/19

-3.43 B.M. 171.80 See Above



AP

GRID ELEVATIONS - NORFOLK COUNTY

SKETCH FOR OBTAINING KEY ELEVATIONS

428

+ 1.58

182.92

SEE PGS. 289

@ Bldg 4.5
178.4

on Conc. 4.48
178.52
@ Conc. 4.40
on Conc. 3.90
179.02

on door sill 3.86
179.06

BUILDING

AGRICULTURAL SCHOOL - WALPOLE

S.W. END BLDG. #3

one

B.M. 181.34 Chis Sq. Loc. Conc. Platf. @ door Lt. to Dairy Barn Bldg #9 425/2

-1.58 B.M. 181.34 See Above



CONC. W.K.

on Conc. 4.48
178.44

@ Conc. 4.37
on Conc. 3.89
178.55
179.03

@ Bldg 4.7
178.2

@ Platf. 5.0
on Platf. 3.93
178.99

@ door Sill 3.92
on door Sill
door Locked

CONC. Platf.
@ Platf. 5.0
on Platf. 3.96
178.96

S.M.H.
Rim 6.40
176.52

INV. INFO
N.B. 427 Pg. 83

#3

SK

GRID ELEVATIONS 2 NORFOLK COUNTY

AGRICULTURAL SCHOOL 2 WALPOLE
ELEVATIONS 1/26/79 11

10 SKETCH FOR OBTAINING KEY

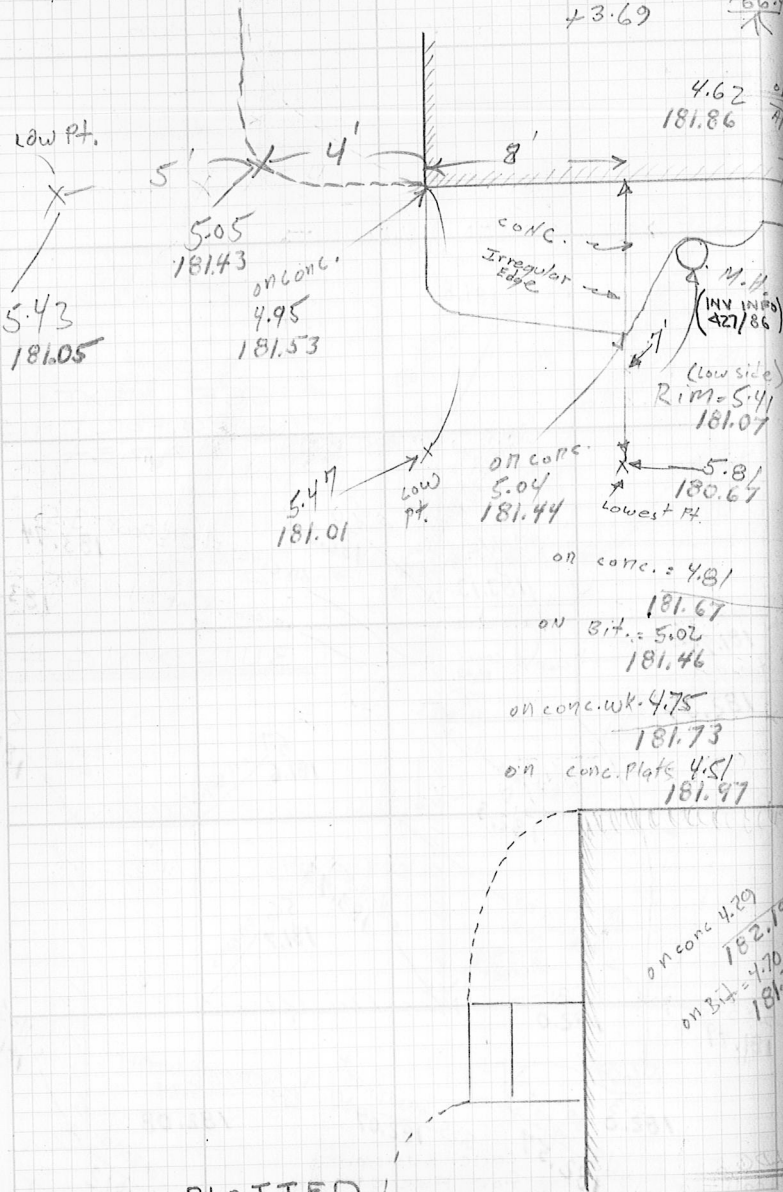
428 WLY. SIDE BLDG. #8, SLY. SIDE BLDG. #9, ELY. SIDE BLDG. #7

+3.69

186.25

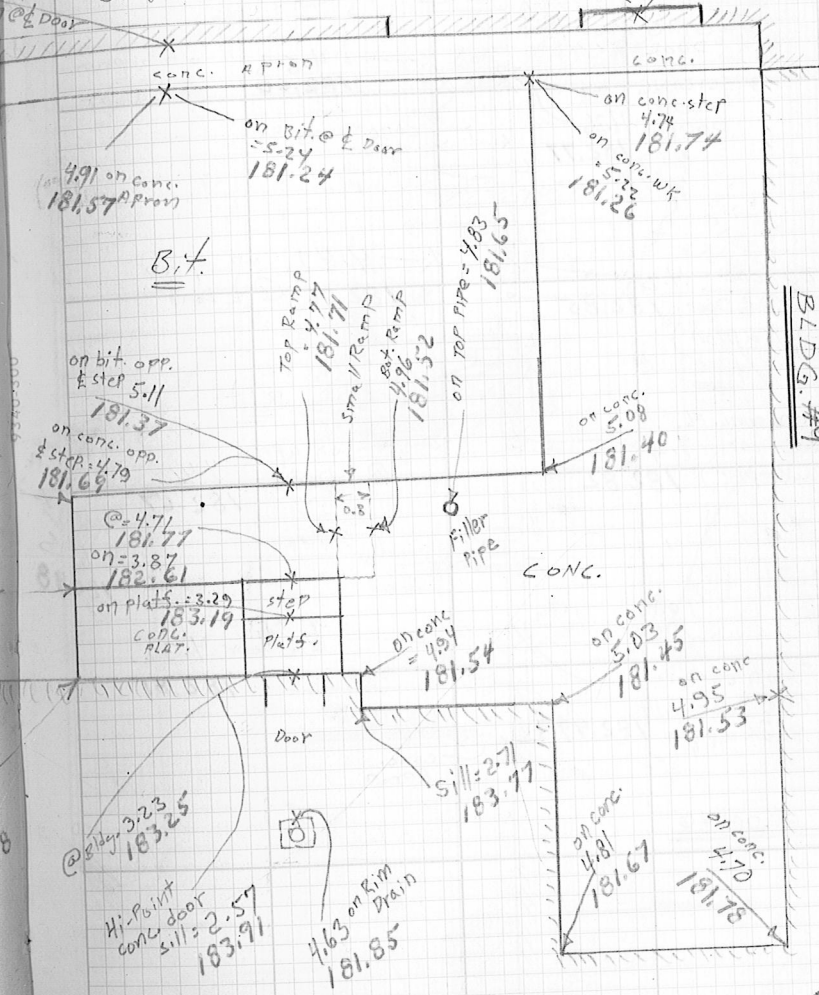
182.79 T.P. Bot. Pg 9

BLDG. #7



PLOTTED

Garage Door



BLDG. #8

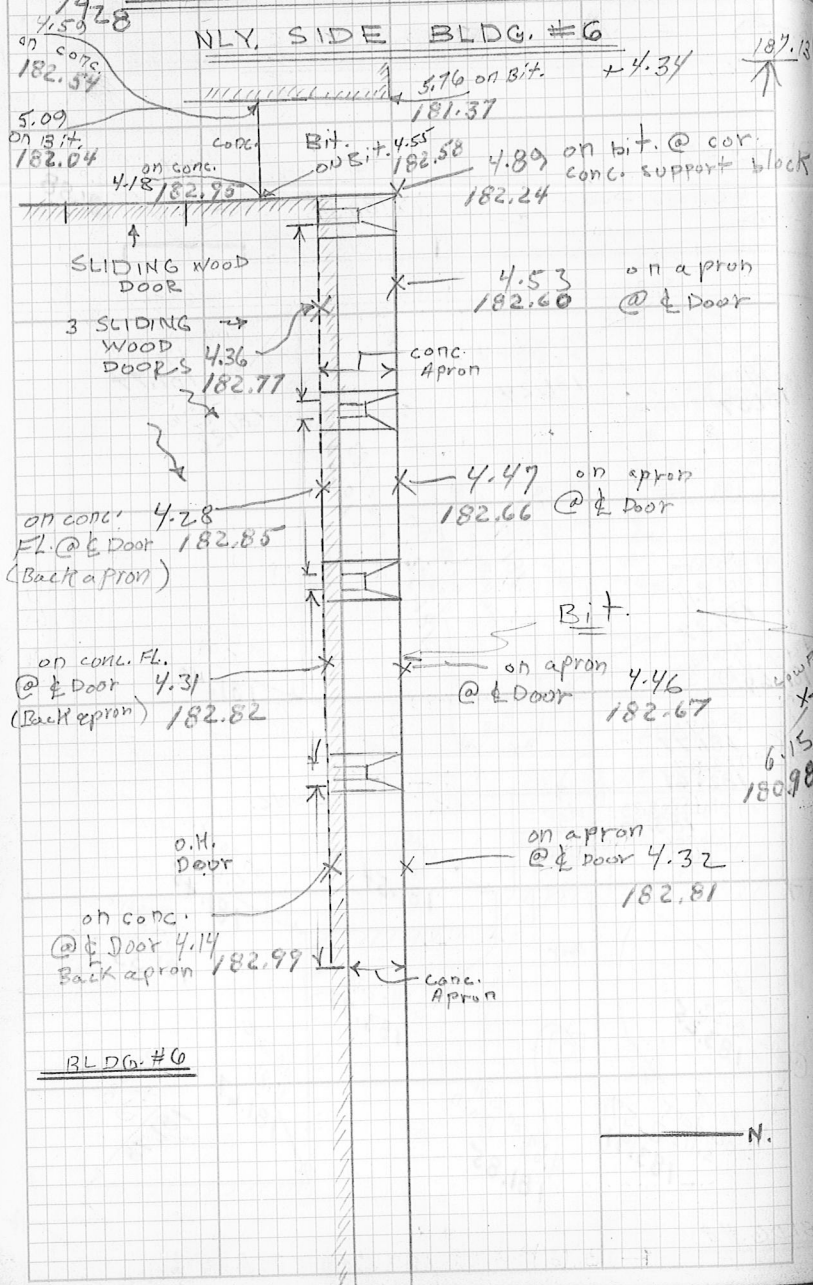
- 3.69

182.79 T.P. above

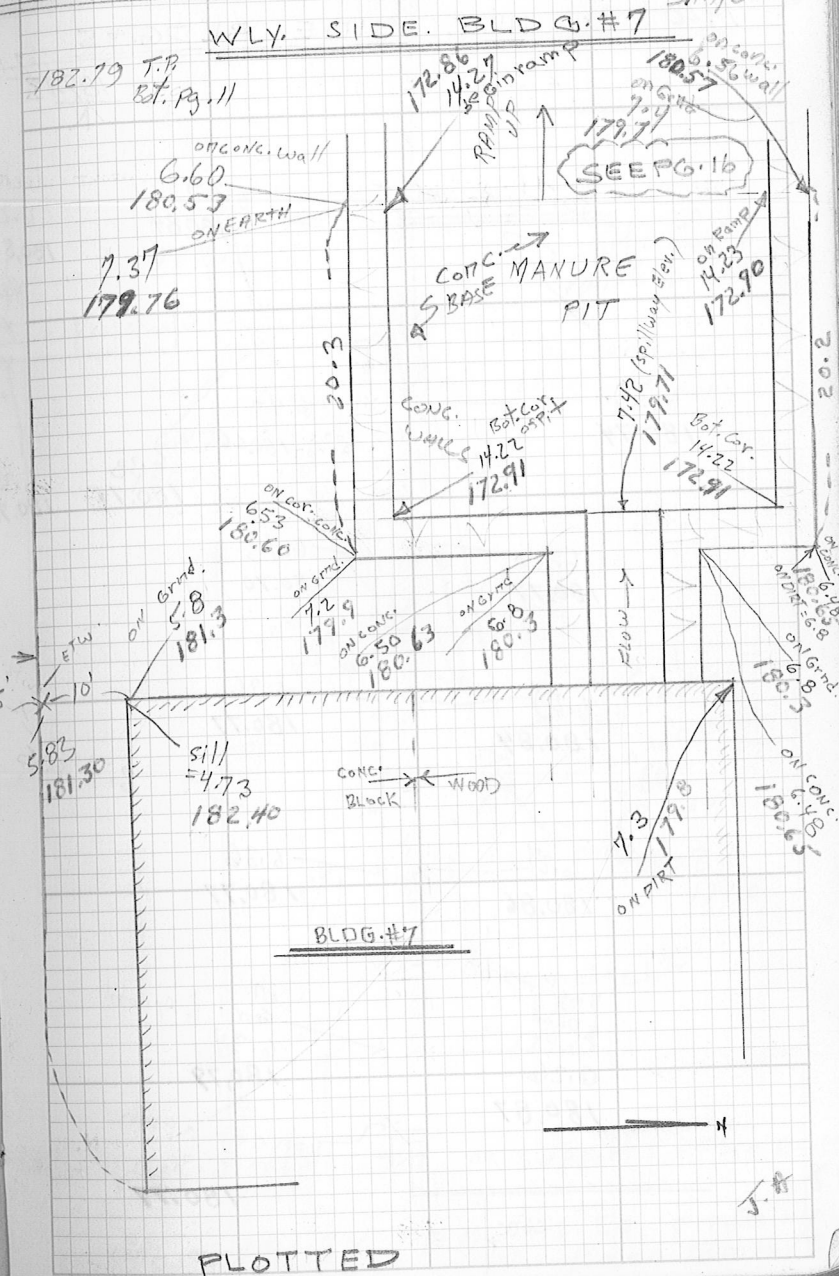
BLDG. #9

T.M.

GRID ELEVATIONS & NORFOLK COUNTY
 12/428 SKETCH FOR OBTAINING KEY



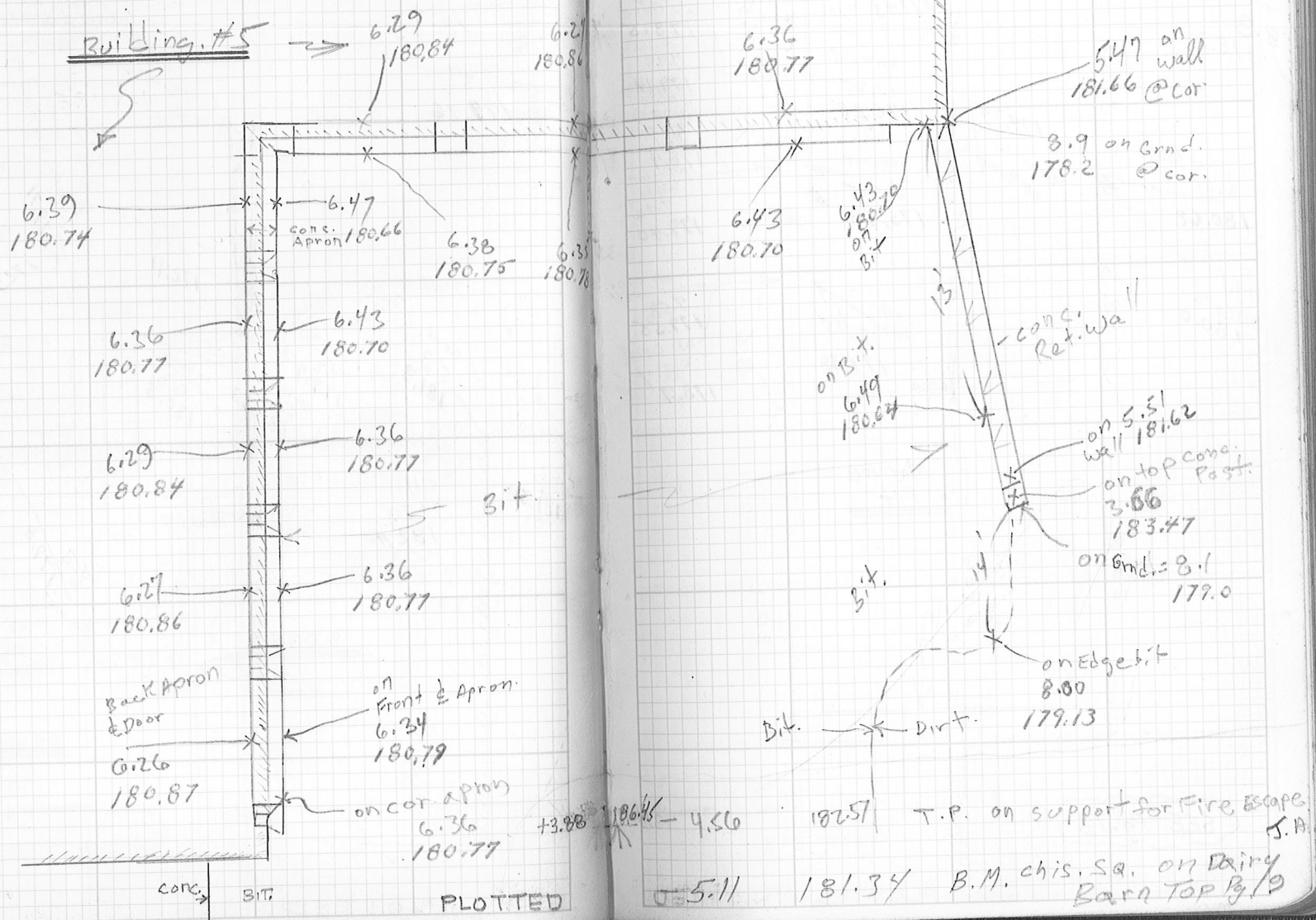
AGRICULTURAL SCHOOL & WALPOLE
 ELEVATIONS 1/26/79 13
 SIMPSON



428/14
 428
 GRID ELEVATIONS - NORFOLK COUNTY
 SKETCH FOR OBTAINING KEY ELEVATIONS
 NLY. SIDE BLDG. #5

AGRICULTURAL SCHOOL & WALPOLE
 1/26/79 15

187.13
 ↑



GRID ELEVATIONS - NORFOLK COUNTY

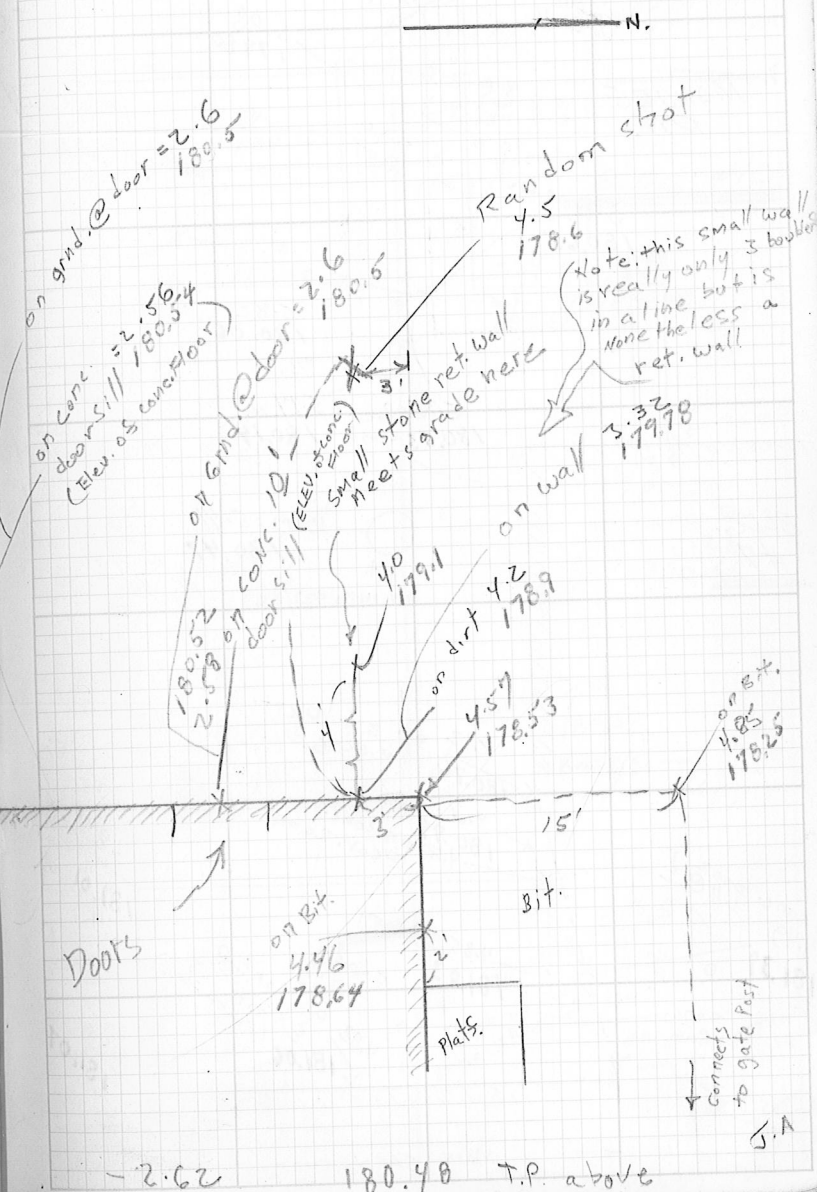
18 / 428
KEY ELEVATIONS - WLY. SIDE BLDG. #10



PLOTTED

AGRICULTURAL SCHOOL - WALPOLE
+3.56 $\frac{184.90}{\uparrow}$
+2.62 $\frac{183.10}{\uparrow}$ - 4.48 180.18 T.P.

B.M. 181.34 19
Chis. Sq. @ Dairy Barn
N.B. 425 Pg. 213

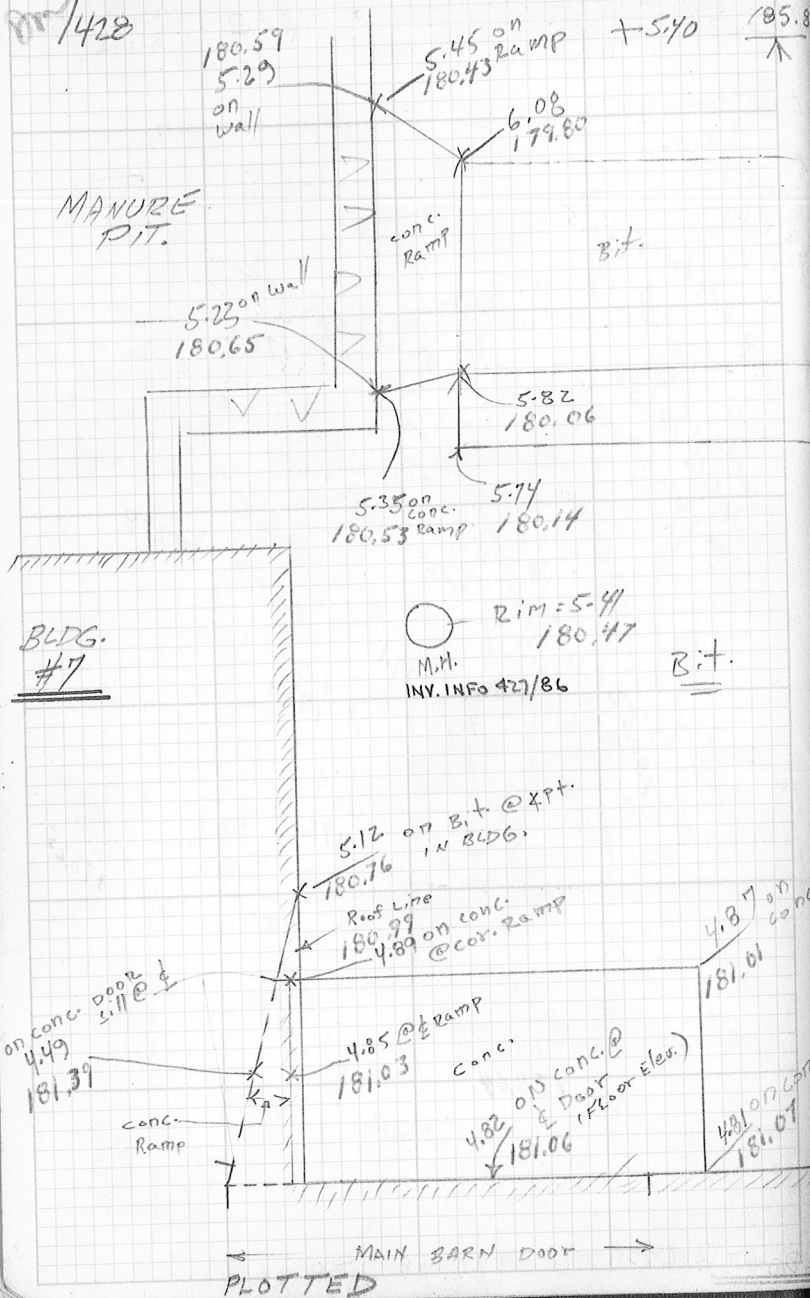


-2.62 180.48 T.P. above

G.A

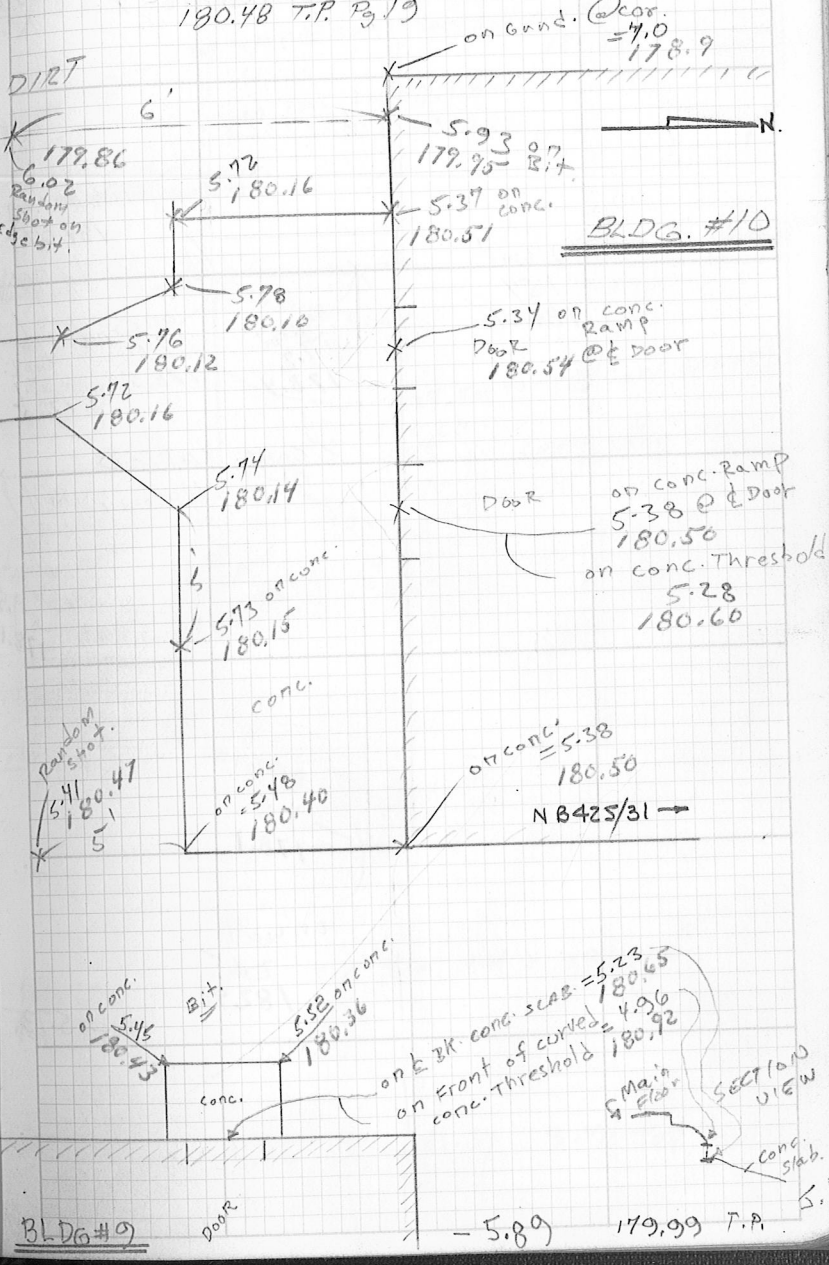
GRID ELEVATIONS - NORFOLK COUNTY
 SKETCH FOR KEY ELEVATIONS

1/428



AGRICULTURAL SCHOOL - WALPOLE
 SLY. SIDE OF BLDG. #10
 WLY. SIDE BLDG. #9, NLY. SIDE BLDG. #7

21

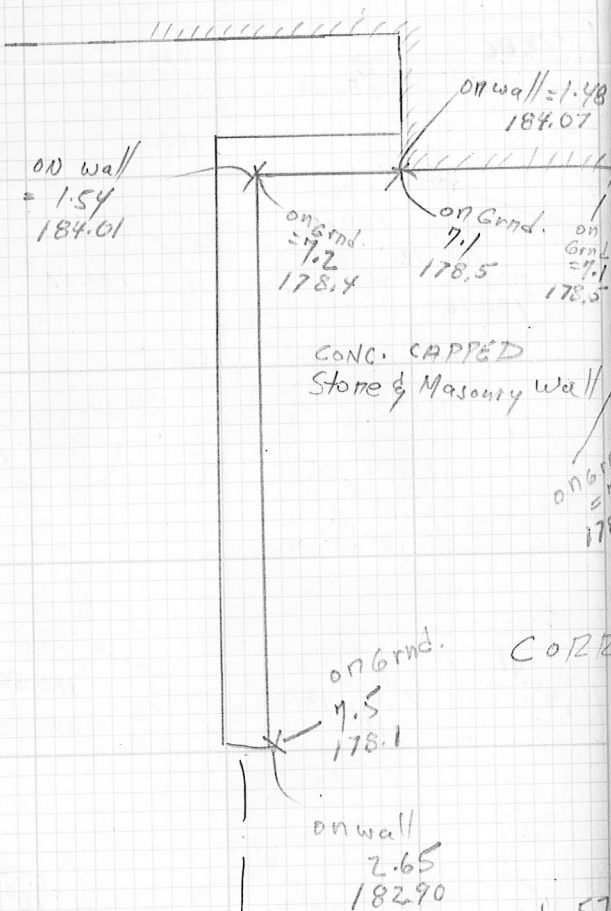


GRID ELEVATIONS & NORFOLK COUNTY

22/428

+ 5.56 $\frac{185.5}{\uparrow}$

SKETCH FOR TAKING KEY



+ 5.73 \uparrow

AGRICULTURAL SCHOOL & WALPOLE

179.99

23

AM

ELEVATIONS - WLY. SIDE BLDG. #10

Top ramp @ conc. door sill = 5.22 180.33

on conc. door sill = 4.86 180.69

BLDG. #10

Doors

6.0 on Grnd. 179.6

CONC. RAMP

5.27 Top ramp @ conc. door sill 180.28

4.85 on conc. door sill 180.70

on Grnd 7.1 178.5

on RAMP 6.98 178.57

6.83 on RAMP 178.72

CORRAL

180.20 - 5.08 T.P. Rim M.H. = 180.47

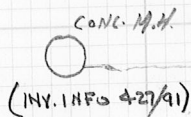
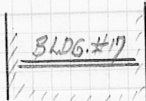
- 4.86 = 181.34 B.M. Top Pg. 13

PLOTTED

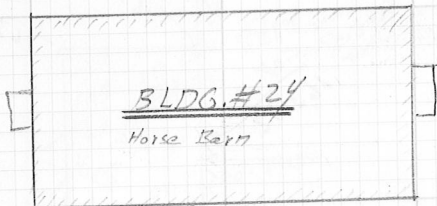
GRID ELEVATIONS 22 NORFOLK COUNTY

01/26/428

172.38



Rim = 5.33
167.05



± 79 MZ

Plotted

+ 2.85

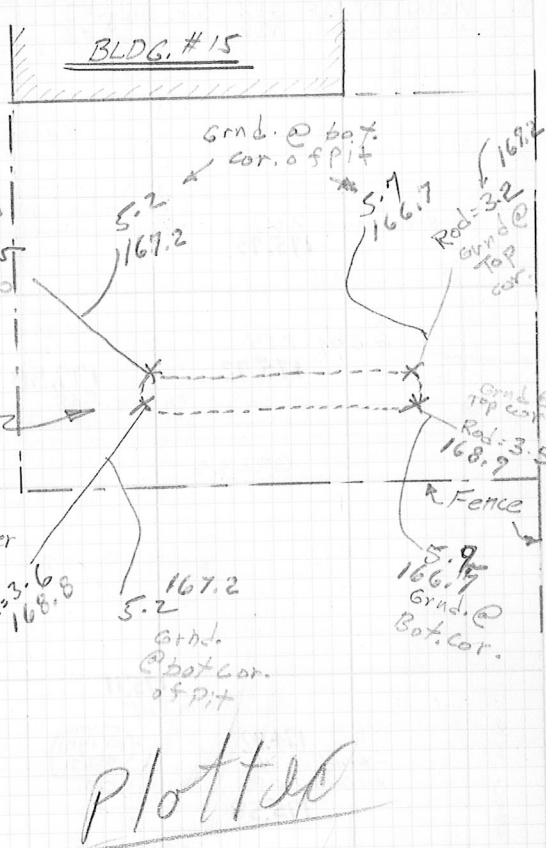
166.73



AGRICULTURAL SCHOOL 22 WALPOLE

27/8m

H.I. "c"
From Pg. 24+25



- 8.50

163.88 T.P Rock

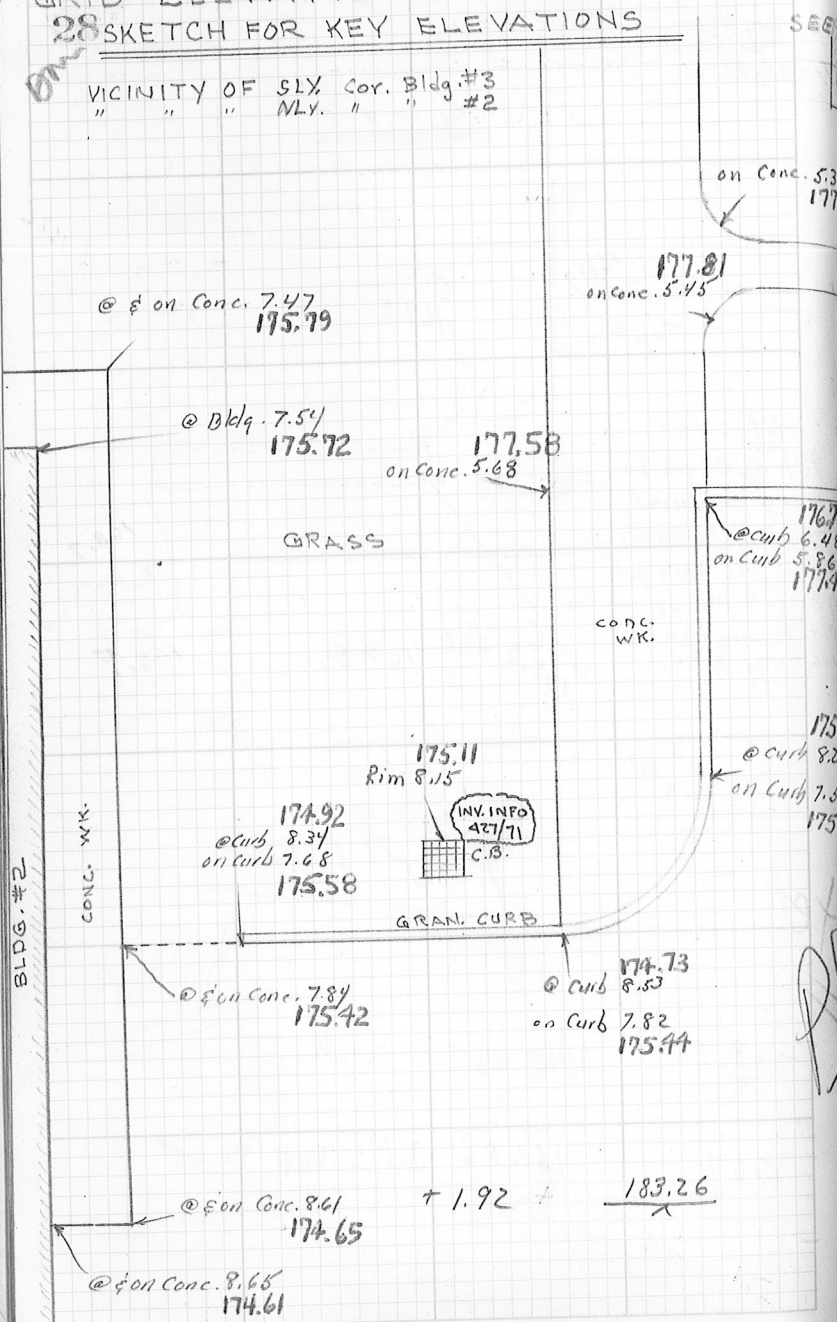
- 5.67

161.06 B.M. Top. Pg. 25

J. R

GRID ELEVATIONS 22 NORFOLK COUNTY
 28 SKETCH FOR KEY ELEVATIONS

VICINITY OF SIX Cor. Bldg. #3
 " " " NLY. " " #2



AGRICULTURAL SCHOOL 22 WALPOLE 428/29

BLDG. # 2
 BLDG. LINE ?
 Roof LINE ?

Grass

CONC. WK.

Grass

GRAN CURB

Bit. Parking

SEE CONT. NEXT PG.

B.M. 181.34 Chic Sq. Loc. Conc. Platf. door Lt. to Dairy Barn Bldg. 49 426/2

B.M. 181.34 See Above

E.K

GRID ELEVATIONS - NORFOLK COUNTY
 SKETCH FOR KEY ELEVATIONS

SLY. SIDE OF BLDG. #3

BUILDING #3

Sill Bldg. +0.90
 178.72

B.M. 171.07 Chis. Sq. Loc. 1st Conc. Step
 NELY Side Kemp Bldg. #3 426/11

+6.75 177.82

-6.75 B.M. (See Above)

GRASS

@ 1' on Conc. 1.59
 176.23

175.80
 @ Conc. Wlk. 2.02
 on Wlk. 1.55
 176.27

CONC. W.K.

175.80
 @ Conc. Wlk. 2.02
 on Wlk. 1.55
 176.27

Grass.

176.0
 @ Conc. 1.8
 on Conc. 1.56
 176.26

GRASS

GRAN CURB

173.83
 @ Curb 3.99

on Curb 3.40
 174.42

BIT. PARKING

AGRICULTURAL SCHOOL - WALPOLE

Simpson 31

N.

@ Bldg. 1.5
 176.3

@ door sill 4.13
 173.69
 @ door sill 4.09
 173.73

@ Bldg. 5.0
 172.8

@ Bldg. 1.5
 176.3

CONC. F.M.T.

173.47
 @ Platf. 4.35
 on Platf. 4.25
 173.57

173.49
 @ Platf. 4.33
 on Platf. 4.22
 173.60

CONC.

173.50

@ 4.32
 on 1.45
 176.37

@ 1st 4.33
 on 1st 3.83
 173.99

CONC. W.K.

173.50
 @ Conc. 4.32
 on Conc. 1.39
 176.43

CONC.

STEPS

173.49

@ 1st 4.33
 on 1st 3.84
 173.98

on Conc.

4.29
 173.53

173.5
 @ 4.3
 on 1.54
 176.28

Grass

CONC. W.K.

Plotted

SEE NEXT PG. for this VICINITY

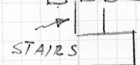
EK

GRID ELEVATIONS NORFOLK COUNTY AGRICULTURAL SCHOOL WALPOLE

SKETCH FOR KEY ELEVATIONS

SLY. SIDE OF BLDG. #3

428



Gran. Curb

Grass

concr. WK.

Grass

Bit. Parking

173.33
on Conc. 4.49

BLDG. #3

FOR H.I. See Pg. 30

On Conc. 4.85

172.97

on Conc. 5.75
172.07



on Conc. 5.81
172.01

173.36
@ Curb 4.46

on Curb 3.80
171.02

concr. WK.

Gran.

@ Curb 4.93
172.89
on curb 4.32
173.50

curb

@ Curb 6.40
171.42
on Curb 5.84
171.98

Bit. Drive

Plotted

31/428

+ 9.46

170.52

Simpson 35

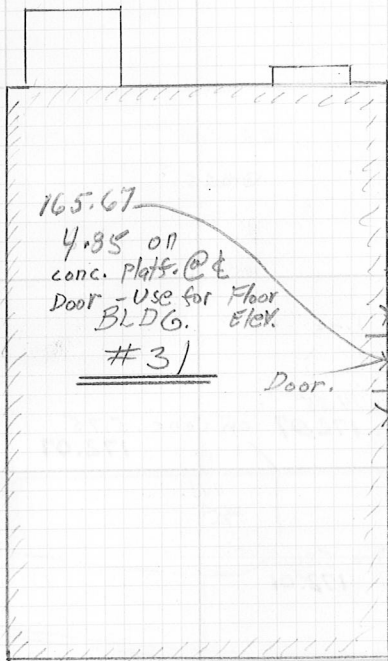
B.M. Elev. = 161.06 Top Pg. 25

SKETCH FOR KEY ELEVATIONS

BLDG. # 31

Note: Elevs. for ground at cor. of Bldg. is to be found in the X-SECTION

Notes:
N.B. 424
Pg. 140



165.67

4.85 on
concr. platf. @
Door - Use for Floor
BLDG. Elev.

31

Door.

1.2'

1.4'

1.1'

1.1'

1.1'

1.1'

1.1'

1.1'

1.1'

1.1'

1.1'

1.1'

1.1'

1.1'

1.1'

1.1'

1.1'

1.1'

1.1'

1.1'

1.1'

1.1'

1.1'

1.1'

1.1'

1.1'

1.1'

1.1'

1.1'

1.1'

1.1'

1.1'

1.1'

1.1'

1.1'

1.1'

1.1'

1.1'

1.1'

1.1'

1.1'

1.1'

1.1'

1.1'

1.1'

1.1'

1.1'

1.1'

1.1'

1.1'

1.1'

1.1'

1.1'

1.1'

1.1'

1.1'

1.1'

1.1'

1.1'

1.1'

1.1'

1.1'

1.1'

1.1'

1.1'

1.1'

1.1'

1.1'

1.1'

1.1'

1.1'

1.1'

1.1'

1.1'

1.1'

1.1'

1.1'

1.1'

1.1'

1.1'

1.1'

1.1'

1.1'

1.1'

1.1'

1.1'

1.1'

1.1'

1.1'

1.1'

1.1'

1.1'

1.1'

1.1'

1.1'

1.1'

1.1'

1.1'

1.1'

1.1'

1.1'

1.1'

1.1'

1.1'

1.1'

1.1'

1.1'

1.1'

1.1'

1.1'

1.1'

1.1'

1.1'

1.1'

1.1'

1.1'

1.1'

1.1'

1.1'

1.1'

1.1'

1.1'

1.1'

1.1'

1.1'

1.1'

1.1'

1.1'

1.1'

1.1'

1.1'

1.1'

1.1'

1.1'

1.1'

1.1'

1.1'

1.1'

1.1'

1.1'

1.1'

1.1'

1.1'

1.1'

1.1'

1.1'

1.1'

1.1'

1.1'

1.1'

1.1'

1.1'

1.1'

1.1'

1.1'

1.1'

1.1'

1.1'

1.1'

1.1'

1.1'

1.1'

1.1'

1.1'

1.1'

1.1'

1.1'

1.1'

1.1'

1.1'

1.1'

1.1'

1.1'

1.1'

1.1'

1.1'

1.1'

1.1'

1.1'

1.1'

1.1'

1.1'

1.1'

1.1'

1.1'

1.1'

1.1'

1.1'

1.1'

1.1'

1.1'

1.1'

1.1'

1.1'

1.1'

1.1'

1.1'

1.1'

1.1'

1.1'

1.1'

1.1'

1.1'

1.1'

1.1'

1.1'

1.1'

1.1'

1.1'

1.1'

1.1'

1.1'

1.1'

1.1'

1.1'

1.1'

1.1'

1.1'

1.1'

1.1'

1.1'

1.1'

1.1'

1.1'

1.1'

1.1'

1.1'

1.1'

1.1'

1.1'

1.1'

1.1'

1.1'

1.1'

1.1'

1.1'

1.1'

1.1'

1.1'

1.1'

1.1'

1.1'

1.1'

1.1'

1.1'

1.1'

1.1'

1.1'

1.1'

1.1'

1.1'

1.1'

1.1'

1.1'

1.1'

1.1'

1.1'

1.1'

1.1'

1.1'

1.1'

1.1'

1.1'

1.1'

1.1'

1.1'

1.1'

1.1'

1.1'

1.1'

1.1'

1.1'

1.1'

1.1'

1.1'

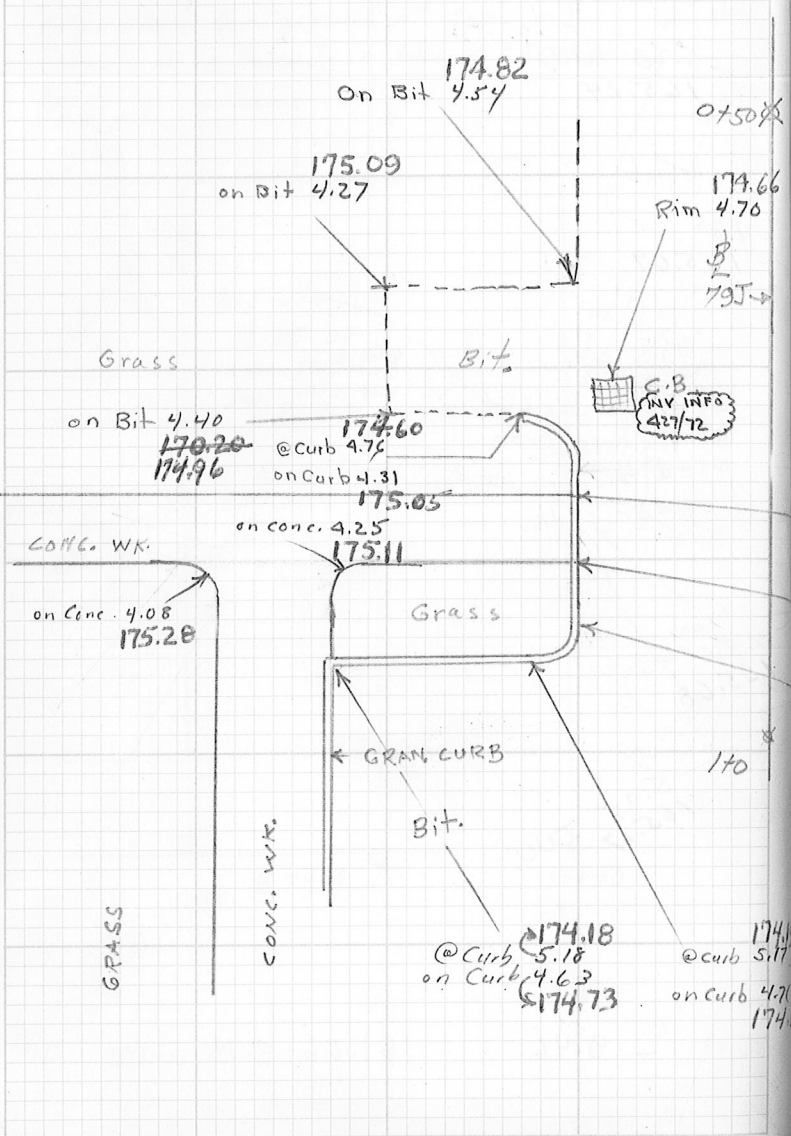
1.1'

1.1'

36 SKETCH FOR KEY ELEVATIONS

428 Vicinity of 179J station 075± Rt.

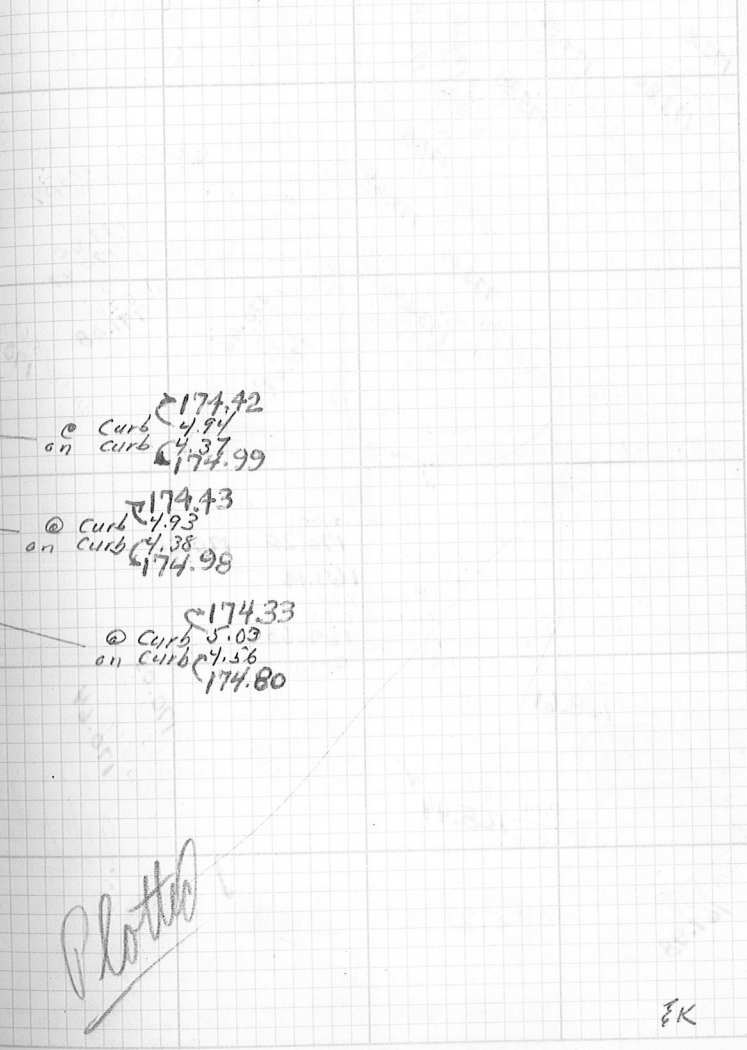
+6.24 $\frac{179.36}{\uparrow}$



428/37
DM

173.12 = B.M. Chis. Sq. L.O.C. CONC. Platf.
WLY. SIDE KEMP BLDG. #3 N.B. 425
Pg. 415

-6.24 B.M. 173.12 (See Above)

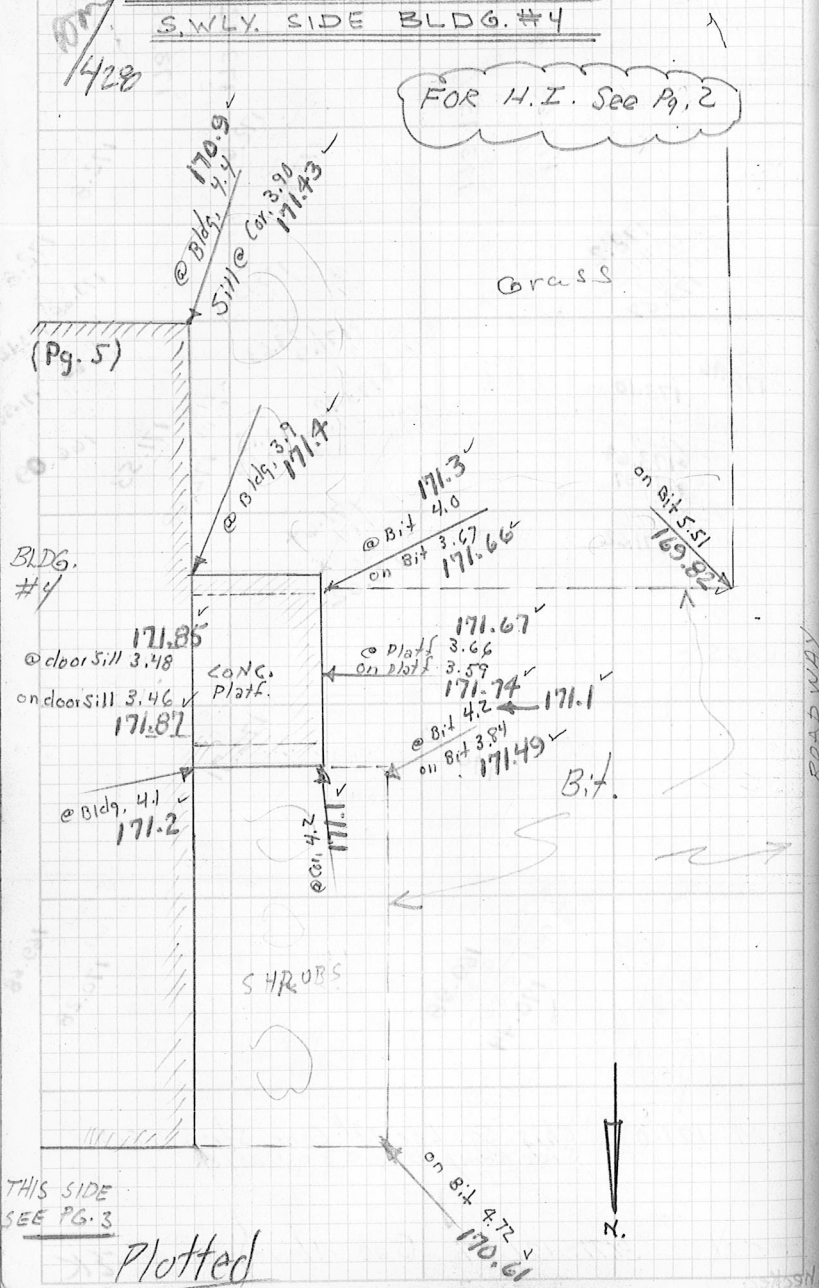


GRID ELEVATIONS 2 NORFOLK COUNTY

40 SKETCH FOR KEY ELEVATIONS

S.W.LY. SIDE BLDG. #4

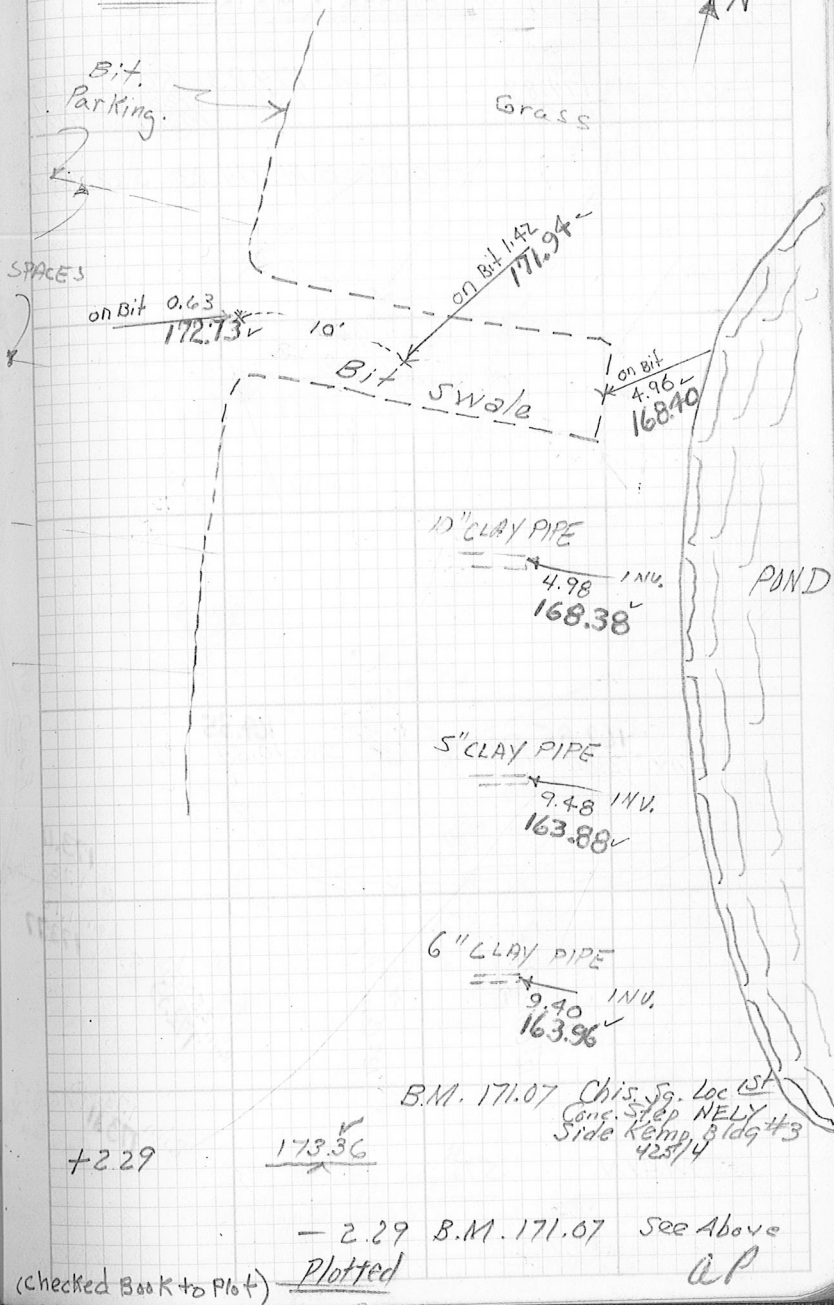
FOR H.I. See Pg. 2



AGRICULTURAL SCHOOL WALPOLE OH

SKETCH FOR KEY ELEVATIONS WLY. SIDE OF POND

41



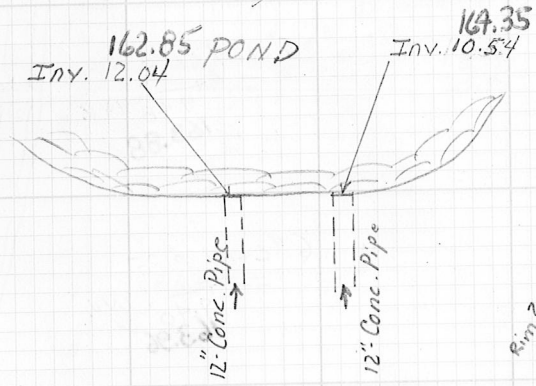
GRID ELEVATIONS & NORFOLK COUNTY

42/ SKETCH FOR KEY ELEVATIONS
VICINITY OF FISHER & MAIN STS.

428
+ 0.06 $\frac{174.89}{\quad}$

B.M. 174.83 ROC 2nd Conc
Std Hsq #391
Main St. 425/2

- 0.06 B.M. 174.83 See Above



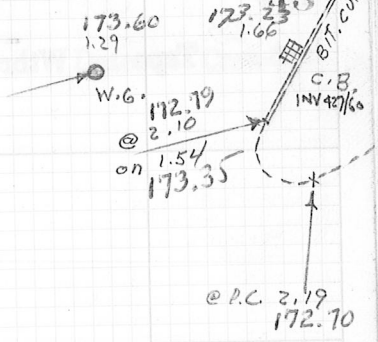
MAIN ST.

Plotter

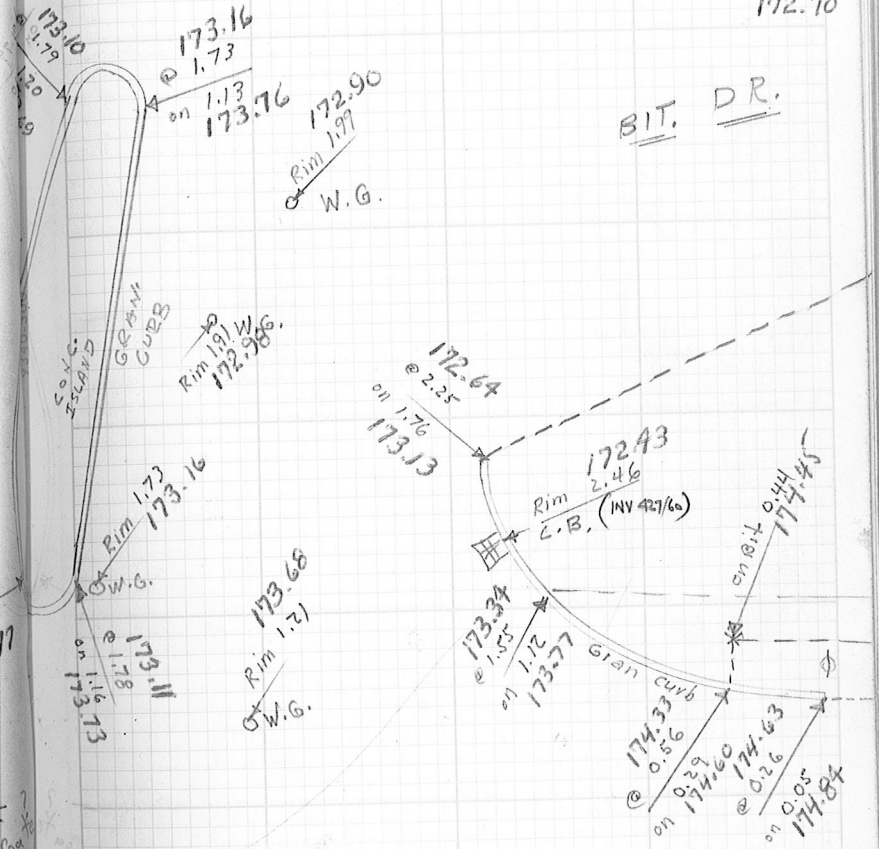
(Checked Book to plot)

AGRICULTURAL SCHOOL 22 WALPOLE Dm

ST. //
FISHER



BIT. DR.



Plotter

JK

44
428

Inst.

Tape

Wthr & Temp.

Date

Crew

45

Inst.

Tape

Wthr & Temp.

Date

Crew

46/428

Inst.

Tape

Wthr & Temp.

Date

Crew

428/47

Inst.

Tape

Wthr & Temp.

Date

Crew

48/420

49

50/428

Inst. Tape Wthr & Temp. Date Crew

428/51

Inst. Tape Wthr & Temp. Date Crew

52/

1428

Inst.

Tape

Wthr & Temp.

Date

Crew

53

Inst.

Tape

Wthr & Temp.

Date

Crew

54/428

Inst. Tape Wthr & Temp. Date Crew

55

Inst. Tape Wthr & Temp. Date Crew

56

/428

Inst.

Tape

Wthr & Temp.

Date

Crew

57

Inst.

Tape

Wthr & Temp.

Date

Crew

58/420

Inst.

Tape

Wthr & Temp.

Date

Crew

59

Inst.

Tape

Wthr & Temp.

Date

Crew

GRID ELEVATIONS - NORFOLK COUNTY

AGRICULTURAL SCHOOL & WALPOLE RD

0+60
+0.17
428
0+0

LINE 796

178.74
K

THIS VICINITY
TO BE CROSS-SECTIONED
VIA MAIN ST. E

0+50

	75	50	25	0
← TO BE DONE VIA MAIN ST. →	2.0	4.2	6.0	7.7
	176.7	174.5	172.7	171.0

0+75

	75	50	25	0
← " " →	0.7	2.9	5.2	8.0
	178.0	175.8	173.5	170.7

1+0

	75	50	25	0
← " " →	1.5	0.9	3.2	6.8
	180.2	177.8	175.5	171.9

+ 1.78

175.74
K

1+25

	0	25	TOP slope 43
← SEE LATER Pg. 62 →	2.5	4.6	6.1
	173.2	171.1	169.6

1+50

	0	25	TOP slope 42
← SEE LATER Pg. 62 →	2.0	3.5	4.5
	173.7	172.2	171.2

	0	25	TOP slope 37 Parking
← SEE LATER Pg. 62 →	1.5	1.5	1.68
	174.2	174.2	174.06

(CHECKED BOOK TO PLOT)

178.57 = Vert. spt. in Root 26" Map.
Main St. 425/2+2

2/8/79 61
Simpson
Merithew
T. 35°±
Dillis
Kelly
clear & sunny

25	50	75	100
8.4	8.6	8.8	9.1
170.3	170.1	169.9	169.6

25	50	TOP slope 55	BOT slope 77 (Edge Ice)
9.1	8.9	9.3	15.0 2/8/79
169.6	169.8	169.4	163.7

25	50	TOP slope 43	on slope 50	BOT slope 65 (Edge Ice)
8.7	8.9	11.0	15.0 2/8/79	163.7
170.0	169.8	167.7		

4.78 173.96 T.P. Vert. spt. 30" Pine station 170
Left 8'
Line 796

on slope 50	BOT slope 63 (Edge Ice)
8.0	12.0 2/8/79
167.7	163.7

on slope 50	BOT slope 67 (Edge Ice)
6.6	12.0 2/8/79
169.1	163.7

TOP slope 40	on slope 50	BOT slope 75 (Edge Ice)
1.6	4.8	12.0 2/8/79
174.1	170.9	163.7

PLOTTED

GRID ELEVATIONS & NORFOLK COUNTY

62/428

LINE 79G

+ 9.13

+ 7.70

1405	Bot. Slope H.	Bot. Slope 45	25	0
		9.2	11.1	14.7
		178.0	176.1	172.5
Cor. Bit. Parkings 1418 Area Lt.	on cor. Bit. Parkings Bit. 45.5	Top Slope Bot. Slope 30	25	0
		5.42	10.0	10.5
		181.78	177.2	176.7
				173.2

Lt. Side	Grid @ Edges	LDW Pts.	Edge	on Bit.	
1425	135	111	108.5	104.5	100
	5.2	6.4	6.4	5.35	5.23
	182.0	180.8	180.8	181.85	181.97
					182.04

Lt. Side	Grid @ Edges				
1450	138.5	125	119	107	100
	6.1	6.4	6.5	5.44	5.32
	181.1	180.8	180.7	181.76	181.87

Lt. Side
1475

	Grid @ Edges		Edge	Bit
	140.5	125	112	100
	6.1	6.2	5.57	5.30
	181.1	181.0	181.63	181.90

+ 7.41

188.58

(checked Book to Plot)

AGRICULTURAL SCHOOL & WALPOLE

Feb. 1979

63
on

- 1.78

173.96 T.P. Page 61

- 3.59

179.50 T.P. Rim M.H. H80-40 Lt.
Line 79G

on Bit.	on Edge Rit. Parkings	Top Slope	Bot. Slope		
50	46.5	43	31	25	0
5.30	5.38	5.7	9.4	10.6	13.9
181.90	181.82	181.5	177.8	176.6	173.3

on Bit.	Edge	Top Slope	Bot. Slope		
75	50	48	46.5	25	0
5.17	5.33	5.40	5.4	9.7	13.5
182.03	181.87	181.80	181.8	177.5	173.7

Parkings	Edge	Top Slope	Bot. Slope	25	
75	50.5	47.5	33		13.1
5.21	5.35	5.4	8.8	9.8	17.41
181.99	181.85	181.8	178.4	177.4	

- 6.03

181.17

T.P. on conc. C.B.

- 2.04

186.54

B.M. R.D.C. Lower
USE 186.52 Gran. Step. BLDG #1 N.P. 425
183.743

pg 60

DATE 6/4/28

(Line 799)

65 BM

+11.67

182.74

Left Side
2+0

Bldg #1	140	125	Edge Bit Parking 122	100
	0.40	0.8	1.12	0.86
	182.34	181.9	181.62	181.88

LEFT SIDE

2+25

Grass	Edge Bit	125	122	100	Bit
150	138	125	122	100	
71.4	0.15	1.06	1.18	0.77	
184.1	182.59	181.68	181.56	181.99	

EDGE Bit Parking
ASK DOCK

2+38

Bit	125	121	111	100	Edge
	1.17	1.25	0.92	0.91	
	181.63	181.49	181.82	181.83	

LEFT SIDE

2+50

Bit	25	0
	7.95	8.62
	174.79	174.12

+10.16

189.62

(checked Book to Plot)

B.M. 171.07 Chis. Sq. LOC 1st Conc. step
NELY side Kemp Bldg. #3 425/4

Bit	Edge Bit Parking	Grass	25	15	Edge Bit Parking	0
	51	50	25	15	4	0
	0.70	0.95	1.0	5.5	7.2	7.89
	182.04	181.79	181.7	179.2	178.5	174.85
						174.75

Edge Bit Parking	51	50	25	20	16	0
	0.71	0.95	1.1	6.1	7.0	7.64
	182.03	181.79	181.6	176.6	175.7	175.10
						174.43

Bit	Edge Bit	Grass	25	23	0	
	52	50	28	23	0	
	0.86	1.00	1.6	6.8	7.3	
	181.88	181.74	181.1	175.7	175.4	
						175.06
						174.28

-3.28 T.P. 179.46 Rim M.H.

-3.10 B.M. 186.52 Roc Lower Granite Step
Entrance to Aggie School
425/2

FA

GRID ELEVATIONS NORFOLK COUNTY

428/66/428 + 5.88

176.95

RIGHT SIDE	- Bit -	Edge Bit Parking	Top Slope
2+0	0	25	46
	2.20	2.65	3.29
	174.75	174.30	173.66
			173.1
			165.8

RIGHT SIDE	- Bit -	Edge Bit Parking	Top Slope
2+25	0	25	50
	2.54	3.16	3.60
	174.41	173.79	173.35
			173.32
			173.17

RIGHT SIDE	- Bit -	Edge Bit Parking	Top Slope
2+50	0	25	50
	2.83	3.55	3.88
	174.12	173.40	173.07
			172.76
			172.9

- 2.12

+ 8.01

179.08

Left Side Only	Grass	BK Conc. w/lt
2+75	125	108
	1.7	2.18
	177.9	176.90

(LINE 79 H)

3+0	BK w/lt	con. w/lt	Grass
	126	119	
	1.29	1.40	
	177.79	177.68	

(checked book to plot)

AGGIE SCHOOL WALPOLE Feb. 1979

(Line 79 G)

67

B.M. 171.07 Chis. Sq. Loc. 1st Conc. Step NELY Side Kemp Bldg #3

Bot Slope on Fee
2-23-79
85
13.2
163.8

Grass	Bot Slope on Fee
2-23-79	
75	96
7.7	13.2
169.3	163.8

Grass	Bot Slope on Fee
2-23-79	
75	100
5.0	10.0
172.0	167.0
	116
	13.2
	163.8

B.M. 174.83 POC. 2nd Conc. Step H/c #391 Main St 425/2

B.M. 171.07 Chis. Sq. Loc. 1st Conc. Step NELY Side Kemp Bldg #3 425/4

Conc. w/lt	on curb	Grass curb	- Bit Parking Lot -
100	94	94	75
2.54	2.87	3.44	4.48
176.54	176.21	175.64	174.60
			174.21
			173.84
			173.54
			173.60

on curb	@ curb	- Bit Parking Lot -
109	102	100
2.11	2.62	3.16
176.97	176.46	175.92
		174.71
		174.13
		173.99
		173.46
		173.30

JK

GRID ELEVATIONS NORFOLK

68/428

179.08

Bldg #3	Bldg	BK conc. wlk	on conc. wlk	on curb
	128	125	114	107
	1.0	0.8	1.75	1.74
	178.1	178.3	177.33	177.34
				176.37

Bldg #3	Bldg	BK wlk	on conc. wlk	on curb
	114	100	94	82
	1.3	2.0	2.08	3.32
	177.8	177.07	177.00	175.76

Bldg #3	Bldg	BK wlk	on conc. wlk	on curb	Gran. curb
	100.5	85	80	75	68
	1.8	2.40	2.42	2.6	3.93
	177.3	176.68	176.66	176.5	175.15
					174.65

	on conc. wlk	on curb	Gran. curb	Bit
	25	21	21	0
	5.36	5.47	6.07	7.09
	173.72	173.61	173.01	171.99

+ 1.71

174.65

4+25

	on curb	Gran. curb	ETW
	25	10	0
	1.6	2.17	3.16
	173.1	172.49	171.50
			170.56
			170.7

(checked BOOK to Plot)

COUNTY AGGIE SCHOOL WALPOLE

(LINE 794)

69

Gran. Curb	Bit Parking	Lot	Edge Bit Parking
96	75	50	25
3.11	4.06	4.84	5.11
175.97	175.02	174.24	173.97
			173.90
			173.62
			173.46
			172.97
			173.0

Gran. curb	Bit Parking	Lot	Edge Bit Parking
82	75	50	25
3.83	4.06	4.81	5.22
175.25	175.02	174.27	173.86
			174.13
			173.47
			173.18
			173.25
			170.1

Bit Parking	Lot	Edge Bit Parking	Grass	Edge Pond on Ice 2-28-79
50	25	0	20	25
5.10	5.68	6.18	6.59	6.7
173.98	173.40	172.90	172.49	172.4
				167.2
				163.8

ETW	Grass	Edge Pond on Ice 2-28-79
18	20	25
7.69	7.4	7.7
171.39	171.7	171.4
		166.6
		163.8

- 6.13 T.P. 172.95 Cor. Gran. Curb

ETW	Grass	Edge Pond on Ice 2-28-79
25	50	68
4.10	7.9	10.9
170.56	166.8	163.8

EK

70/428

174.66

Bldg #3	Grass	Grass	at conc. s.w.	on curb	@ Gray curb	
53	50	25	8	1	1	0
1.1	1.1	1.8	3.05	3.24	3.83	3.89
173.6	173.6	172.9	171.61	171.42	170.83	170.77

Bldg #3	Grass	at conc. s.w.	on Gran
40	25	0	6
1.3	1.7	4.08	4.21
173.4	173.0	170.6	170.45
		170.58	

Grass	at conc. s.w.	on Gran curb
25	19	0
2.1	2.5	4.80
172.6	172.2	169.86
		169.81

Bit
25
5.34
169.32
5.76
168.90

(LINE 79.I)

Bldg #4	Grass	Grass	ETW	ETW
63	50	25	9	0
3.7	4.0	6.0	5.76	5.86
171.0	170.7	168.7	168.90	168.80

Bldg #4	Grass	Grass	ETW	ETW
60	50	25	3	0
3.9	4.1	5.2	5.26	5.65
170.8	170.6	169.5	169.00	169.01

(checked Book to Plat)

(LINE 79H)

71

ETW	Top slope	Grass	Grass	Grass	Edge Pond on Ice 2-28-79
20	25	30	50	75	77
5.0	4.6	4.8	7.0	10.4	10.9
169.7	170.1	169.9	167.7	164.3	163.8

ETW	Grass	Grass	Grass	Grass	Edge Pond on Ice 2-28-79
6	25	26	39	50	62
4.71	5.60	5.65	5.8	6.5	7.3
169.95	169.06	169.01	168.9	168.2	167.4
					163.8

ETW	Grass	Grass
6	25	37
5.41	5.96	6.31
169.25	168.70	168.35
		168.8
		168.7

25
5.96
168.70

ETW	ETW	Grass	Top slope	Edge Pond on Ice 2-28-79
12	26	30	50	75
6.02	6.46	6.0	6.0	6.9
168.64	168.20	168.7	168.7	167.8
				166.0
				10.4
				8.7
				10.9
				163.8

ETW	ETW	Grass	Grass	Grass	Top Slope	Edge Pond on Ice 2-28-79
7	19	25	50	75	100	103
5.66	6.10	5.8	6.4	6.7	7.5	7.7
169.00	168.56	168.9	168.3	168.0	167.2	167.0
						11.1
						10.9
						163.8

2K

GRID ELEVATION NORFOLK COUNTY

72/428

174.66

Bldg #4	Bldg.			ETW	T.W.	↓
670	62	50	25	7	0	4.7
	3.8	4.1	5.0	5.36	5.45	5.45
	170.9	170.6	169.7	169.10	169.21	169.21

Bldg #4	Bldg.			ETW	T.W.	↓
6725	62	50	25	10	0	9
	3.6	4.1	4.8	5.09	5.02	5.23
	171.1	170.6	169.9	169.57	169.64	169.43

Bldg #4	Bldg.			ETW	T.W.	↓
C.B. RT. 6750	59	50	25	12	3	
	3.7	3.7	4.3	4.65	4.55	
	171.0	171.0	170.4	170.01	170.11	

+ 4.96

176.03

Grass	ETW	T.W.	↓
50	25	12	2
4.9	5.4	5.53	5.43
171.1	170.6	170.50	170.60

AGGIE SCHOOL WALPOLE

(LINE 79Z)

73

ETW	Grass	Top Shape	Edge Pond on Ice	2-28-72
12	14	25	38	50
5.55	5.4	6.0	6.5	6.5
169.11	169.3	168.7	168.2	168.2
				75
				100
				115
				10.9
				167.4
				163.8

Grass	↓
16	25
5.1	6.1
169.6	168.6

Rim C.B. ETW	Grass	↓
0	17	25
4.61	4.86	5.4
170.05	169.20	170.1
		169.3

Note: For invent
info. see
N.B.
4/27/66

- 3.59 B.M. 171.07 Chis. Sq. Loc 1st Conc. Step
NELY side Kemp Bldg #3
4/25/74

ETW	Grass	↓
0	8	15
5.45	5.60	5.3
170.58	170.43	170.7
		169.7

- 4.23 B.M. 171.80 Small Chis. Sq. Log Core
Window Sill NELY side 1013.
131dg 44 (171.80) 4/25/74

(Checked BOOK to Plot)

EK

GRID ELEVATIONS NORFOLK COUNTY

74/428

+ 3.69

190.54

0+0

0
5.07
185.47

0+25

0
5.07
185.47

0+50

0
1.11
4.89
185.65

0
4.75
185.79

0+75

	Bldg	Bk Conc. WIK	@ 5' on Conc. WIK
Bldg #2	19	13	9
	4.5	4.75	4.76
	186.0	185.79	185.78

AGGIE SCHOOLS WALPOLE

75

B.M. 186.85 ROC and Conc. step to Bldg #2 Service Rd. 428 1/2

See NB 424 P. 49 for sketch showing Traverse Line

1/4	@ Conc. Wall	on Wall
0	11	11
4.68	4.55	2.03
185.86	185.99	188.51

TOP CREST IN ROAD

1+0

Bldg	ETW
16	5
4.89	4.79
185.65	185.75

1/4	@ 5' on Conc. Plots.	on Conc. Bldg
0	14	20
4.85	4.56	4.57
185.69	185.98	185.97

Bldg #1

1+25

Bldg	ETW
12	3
5.5	6.42
185.0	184.12

1/4	@ 5' on Conc. WIK
3	10
6.37	6.55
184.17	183.99

Top Slope Rt.

1+41.5

1/4	Edge Bit
0	11
7.72	7.67
182.82	182.87

@ 5' Bldg
35
6.9
183.6

Bldg #1

81C

GRID ELEVATIONS NORFOLK COUNTY

76/428

Top Slope Lt.
1+44.5

Bldg #2	@ Bldg	ETW
	32.5	3
	7.4	8.00
	183.1	182.54

190.54

+ 1.95

183.84

1+50

Bot Ledge	on Ledge	@ on Ledge	ETW
25	17	15	3
2.4	0.48	0.66	1.70
181.4	182.3	183.36	182.14

Bldg #2

Bldg	ETW
32	0
2.7	1.61
181.1	182.23

Bot Slope Lt.
1+53

Bldg #2	@ Bldg	ETW
	31.5	21
	3.4	2.8
	180.4	181.0

Bot Slope Lt.
Bit Entk. Rt.
1+62

Bldg #2	@ Bldg	ETW
	30	9
	3.7	2.63
	180.1	181.21

AGGIE SCHOOL WALPOLE

10
77

0
7.92
182.62

- 8.65 T.P. 181.89 Stone in T.W.

T.W.	ETW	Edge Bit	@ on Ledge	on Ledge	Bot Ledge
3	10	22	25	15	17
1.60	1.72	1.48	1.3	0.66	0.48
182.24	182.12	182.40	182.5	183.18	183.36

Bldg	Bldg #2
25	32
2.4	2.7
181.4	181.1

on Ledge	@ on Ledge	ETW
16	15	9
0.65	0.75	0.8
183.19	183.09	183.0

T.W.	ETW	Bit
3	10	17
2.50	2.52	2.22
181.34	181.32	181.62

178/428

428/79

183.84
X

1775

Bldg #2	Bldg	Edge Bit	ETW	T.W.
	17.5	10	5	2
	3.3	3.33	3.43	3.38
	180.5	180.51	180.41	180.46

ETW	14	17	on Bit
10	14	17	19
3.45	2.4	2.0	2.02
180.39	181.4	181.8	181.82

270

Bldg #2	Bldg	ETW
	14	6
	4.9	5.15
	178.9	178.69

T.W.	ETW	on Bit
2	8.5	16
5.21	5.30	2.8
178.63	178.54	181.0

2725

ETW	T.W.	ETW	Edge Bit
7	0	8	25
7.35	7.10	7.07	3.9
176.49	176.74	176.77	179.94

2750

Grass	ETW	Bit
28	20	17
5.7	7.6	8.42
178.12	176.2	175.42

@ Gran curb	Bit
63	50
9.59	9.53
174.25	174.31

2775

Bit

25	0
10.00	9.72
173.84	174.12

+ 3.67

177.67
X

- 9.84 T.P. 174.00 Rim M.H.

- 6.60 B.M. 171.07 Chis Sq. Loc. 1st Cong. Step NELY Side Kemp Bldg #3

GRID ELEVATIONS NORFOLK COUNTY
80/428

+2.06

$\frac{175.18}{x}$

375

ETW	d T.W.	
6	0	4
$\frac{5.76}{5.76}$	$\frac{5.63}{5.63}$	$\frac{5.50}{5.50}$
169.42	169.55	169.68

470

Bit			ETW	d T.W.	
75	50	25	9	0	1
$\frac{4.31}{4.31}$	$\frac{5.81}{5.81}$	$\frac{5.30}{5.30}$	$\frac{5.67}{5.67}$	$\frac{5.39}{5.39}$	$\frac{5.38}{5.38}$
170.87	169.37	169.88	169.51	169.79	169.80

4725

Bldg #4	@ Bldg	ETW					d T.W.	
	81	75	50	25	11	2	0	
$\frac{4.12}{4.12}$	$\frac{4.18}{4.18}$	$\frac{4.51}{4.51}$	$\frac{5.15}{5.15}$	$\frac{5.43}{5.43}$	$\frac{5.18}{5.18}$	$\frac{5.18}{5.18}$		
171.06	171.00	170.67	170.03	169.75	170.00	170.00		

4750

Bldg #4	@ Bldg	End Bit	ETW		d T.W.	
	43	38	25	14	4	
$\frac{4.2}{4.2}$	$\frac{4.04}{4.04}$	$\frac{4.67}{4.67}$	$\frac{5.38}{5.38}$	$\frac{5.08}{5.08}$		
171.0	171.15	170.51	169.80	170.13		

4775

Bldg #4	@ Bldg	ETW		
	39	25	20	17
$\frac{4.2}{4.2}$	$\frac{4.7}{4.7}$	$\frac{5.0}{5.0}$	$\frac{5.49}{5.49}$	
171.0	170.5	170.2	169.69	

570

- Grass -	ETW	d T.W.
25	20	10
$\frac{5.8}{5.8}$	$\frac{5.71}{5.71}$	$\frac{5.57}{5.57}$
169.7	169.47	169.61

(checked Book to Plot)

AGGIE SCHOOL in WALPOLE
(Line 79 K)

81

B.M. 173.12 Chis. Sq. Loc. Conc. Platf. WLY Side
Kemp Bldg #3 425/4

@ Curb	on Curb	
13	13	25
$\frac{5.62}{5.62}$	$\frac{5.08}{5.08}$	$\frac{3.9}{3.9}$
169.56	170.10	171.3

@ Curb	on Curb
10.5	10.5
$\frac{5.40}{5.40}$	$\frac{4.86}{4.86}$
169.78	170.32

@ Curb	on Curb	Grass	Bldg
8	8	10	25
$\frac{5.12}{5.12}$	$\frac{4.68}{4.68}$	$\frac{4.5}{4.5}$	$\frac{2.6}{2.6}$
170.06	170.50	170.7	172.6
			172.5

@ Curb	on Curb	Bldg			
0	5	7	21	25	28
$\frac{5.00}{5.00}$	$\frac{4.92}{4.92}$	$\frac{4.48}{4.48}$	$\frac{4.2}{4.2}$	$\frac{2.3}{2.3}$	$\frac{2.3}{2.3}$
170.18	170.26	170.70	171.0	172.9	172.8

d T.W.	@ Curb	on Curb	Bldg	
7	0	2	2	12
$\frac{5.09}{5.09}$	$\frac{4.99}{4.99}$	$\frac{4.96}{4.96}$	$\frac{4.47}{4.47}$	$\frac{2.9}{2.9}$
170.09	170.09	170.22	170.71	172.3
				172.5

@ Curb	on Curb
0	0
$\frac{5.43}{5.43}$	$\frac{4.97}{4.97}$
169.75	170.24

8K

82/428

5725

		<u>175.18</u>	
		^	
		\$	@
		T.W	curb
ETW		13	3
<u>28</u>	<u>25</u>	<u>6.15</u>	<u>6.10</u>
6.18	6.19		
164.06	168.99	169.03	169.08
169.00			

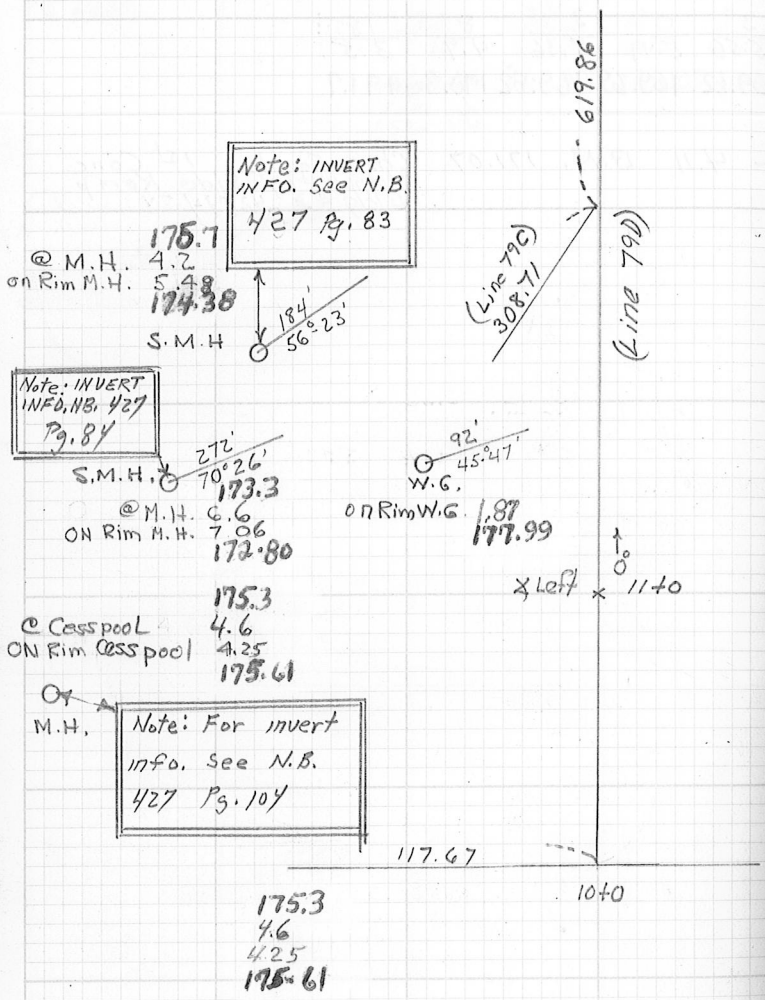
(LINE 79K)

83

on Brail curb	on conc. walk	Dk conc. walk	- Grass -	
<u>3</u>	<u>0</u>	<u>3</u>	<u>8</u>	<u>18</u>
5.56	5.49	5.36	4.9	3.5
169.62	169.69	169.82	170.3	171.7

- 4.11 B.M. 171.07 Chis. Sq. Loc. 1st Conc.
Side NELY Side Kemp
3169 43 42514

10084/428



Plotted

3K

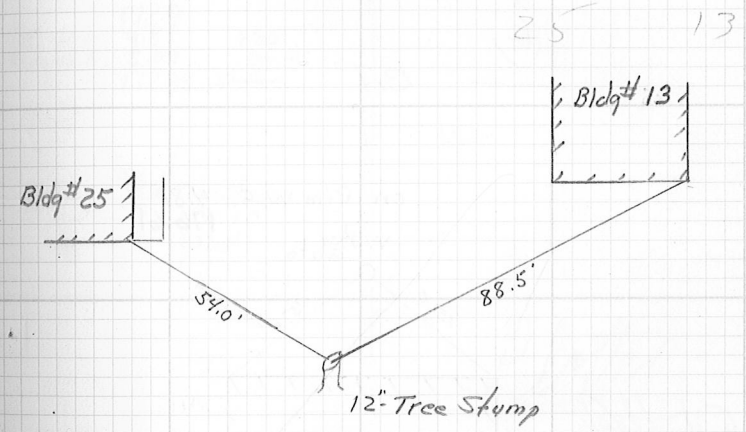
85 on

B.M. 172.54 Chis. Sq. Large Boulder
200' E. back Dairy Tech
Bldg # 11 425/5

+ 7.32 179.86

- 7.32 B.M. 172.54 See Above

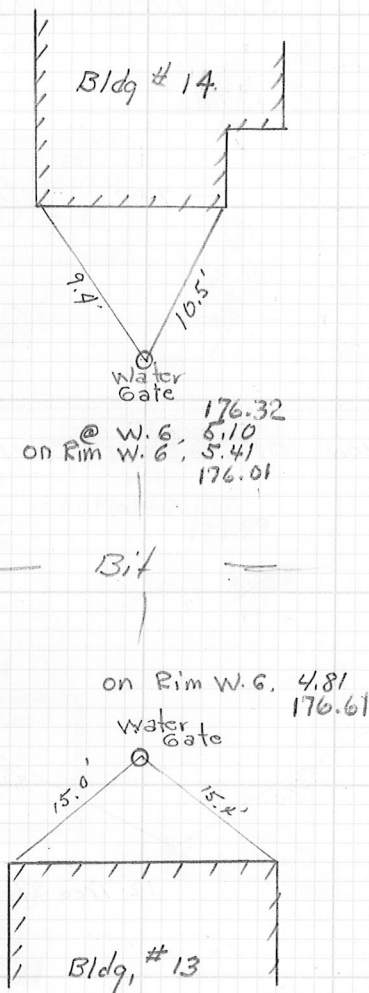
LOCATION OF TREE STUMP



Plotted

86
428

EXTRA DETAIL AGGIE SCHOOL



Plotted

+6.63 $\frac{181.42}{\wedge}$

B.M. 174.79 R.R. Spk
Tele. Pole
425/2

- 6.63 B.M. 174.79 See Above EK

WALPOLE

March 5, 1979
7:68

87
10W

171.6
@ W.G. 5.9 +94.5
ON Rim W.G. 6.23 -5.5
171.22 W.G.

172.59
ON Rim W.G. 4.86 +60
-8.5
W.G.

172.1
@ W.G. 5.4 +20
ON Rim W.G. 5.70 -12.5
171.75 W.G.

+42.5
-24.5
12" Tree
Stump

172.2
@ W.G. 5.3 +22
ON Rim W.G. 5.72 -7.5
171.73 W.G.

172.9
@ W.G. 4.8 +80
ON Rim W.G. 5.07 -9
172.38 W.G.

36" Tree Stump
-10'
+37.5

(LINE 79D)

Plotted

+2.68 $\frac{177.45}{\wedge}$

B.M. 175.57 R.R. Spk Tele Pole #8
425/2

- 2.68 B.M. 175.57 See Above

EK

88/428
ELEVATION RIM S.M.H. Back #

+2.22

$\frac{174.76}{X}$

B.M. 172.54

Chris. Jo. Large
Goulds Back
Dairy Tech Bldg
425/5

Rim S.M.H.

Note: For INK. INFO.
see N.B. 427 Pg. 84

Rim

$\frac{6.88}{167.08}$

For location of M.H.
See #8425 Pg. 12

- 2.22 B.M. 172.54 See Above

✓ WAS

89

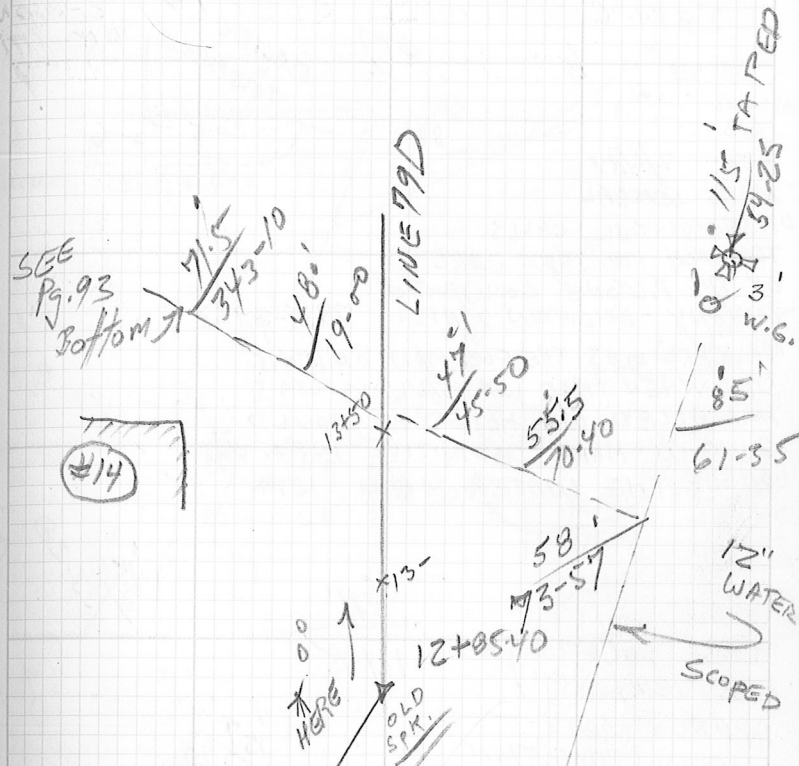
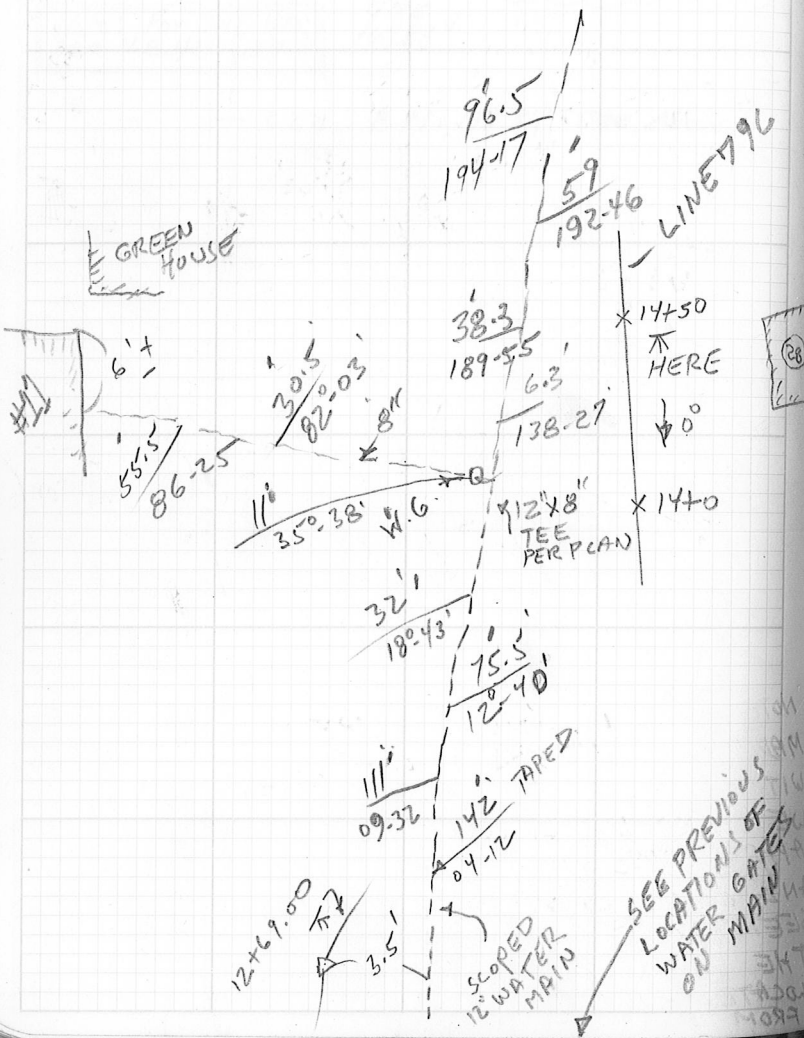
Inst. Tape Wthr & Temp. Date Crew

90/428

Inst. **Tape** **Wthr & Temp.** **Date** **Crew**
 SCOPING 12" WATER MAIN
 WITH METRO-TECH 810
 LOCATOR - SIMPSON
 GENITI
 KELLY

428/91

Inst. **Tape** **Wthr & Temp.** **Date** **Crew**
 2/4/87



NOTE: SEVERAL ATTEMPTS WERE MADE TO SCOPE THESE LINES WITH THE 810 LOCATOR - WE TRIED DIFFERENT APPROACHES - I.E. INDUCTIVE AND CONDUCTIVE - BOTH SEEMED TO GIVE APPROX. THE SAME RESULTS - WHICH WE HAVE LOCATED. - THEY DO HOWEVER SEEM TO DIFFER FROM AS BUILT MEASURES

SEE PREVIOUS LOCATIONS OF WATER GATES ON MAIN

SEE Pg. 93 Bottom

SEE PREVIOUS LOCATIONS OF WATER GATES ON MAIN

Inst. Tape Wthr & Temp. Date Crew



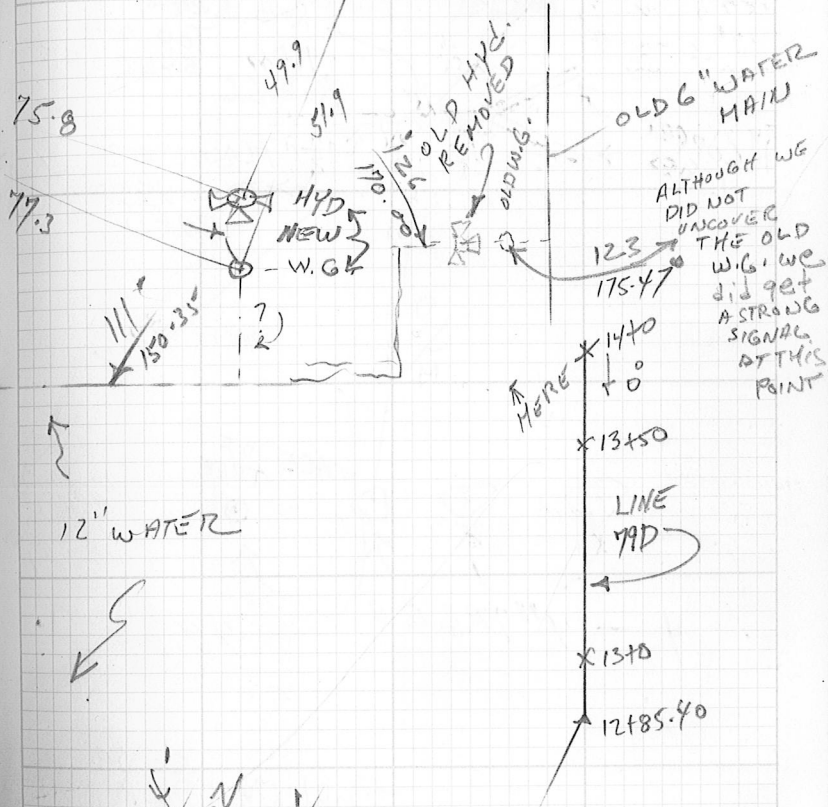
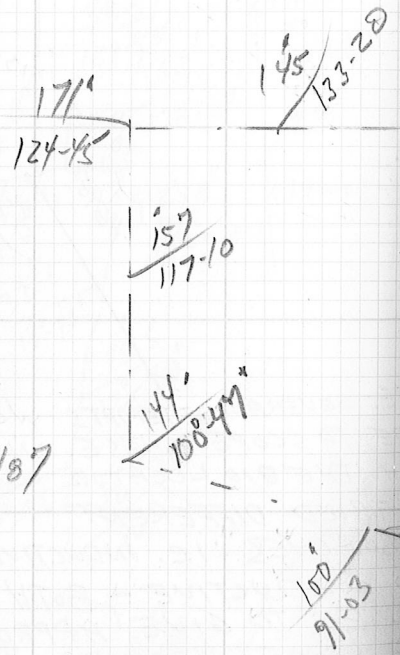
Inst. Tape Wthr & Temp. Date Crew



NOTE: 2/6/87
MADE SEVERAL UNSUCCESSFUL CALLS TO REACH MR. JEFF CARL OF THE P. LEONE CONSTRUCTION COMPANY - BRIGHTON MASS. 782-8963 MR. CARL WAS THE FOREMAN ON THIS SITE WHEN THIS WATER LINE WAS INSTALLED. WE HOPED HE COULD GIVE US MORE DEFINITIVE INFO. ON WHERE THE WATER MAIN IS.

THESE LOCATIONS ARE VERY VERY APPROXIMATE - A SERIOUS QUESTION REMAINS AS TO THE CORRECT LOCATION AND CONFIGURATION OF THIS 12" WATER MAIN

W.S. Simpson 2/6/87



ALTHOUGH WE DID NOT UNCOVER THE OLD W.G. WE DID GET A STRONG SIGNAL AT THIS POINT

12" WATER

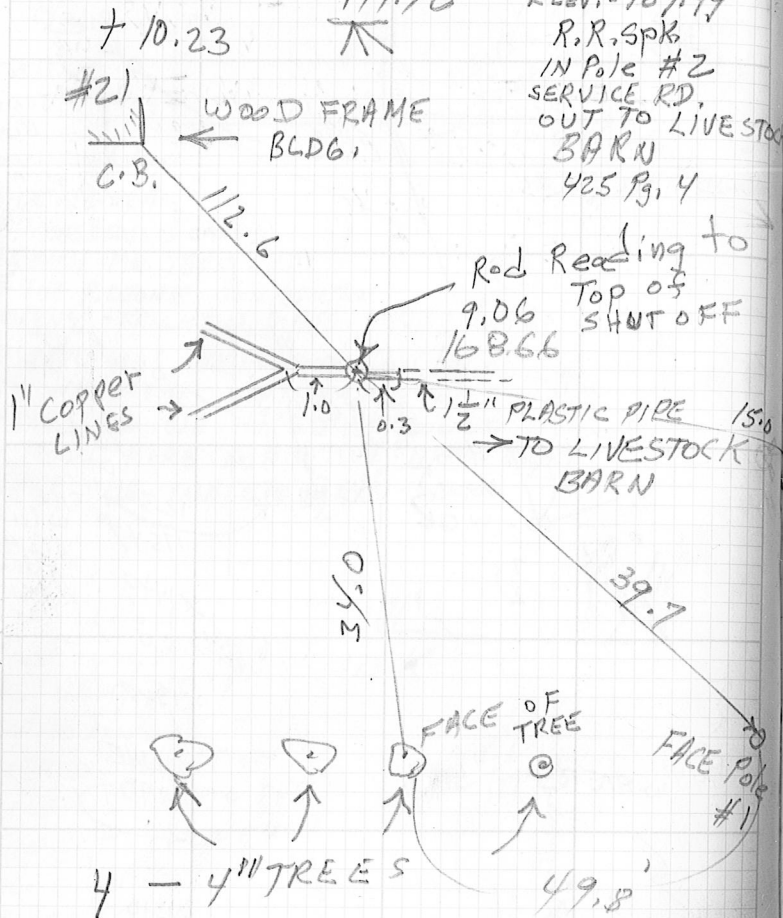
64°/69.02'

50°/32.49'

94/428 NORFOLK COUNTY AGGIE SCHOOL

428/95

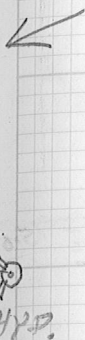
Inst.	Tape	Wthr & Temp.	Date	Crew
		177.72	ELEV. = 167.49	
			R.R. Spk.	
			IN Pole #2	
			SERVICE RD.	
			OUT TO LIVESTOCK	
			BARN	
			425 Pg. 4	



CONC.
 -3.01 = 174.71 DOOR SILL
 TO BLDG #22
 OR PLOT SAYS
 174.70

Inst.	Tape	Wthr & Temp.	Date	Crew
			Aug. 2, 1989	Simpson Gen. Iti Kelly

LOCATION OF WATER
 SHUT OFF OF 1 1/2"
 PLASTIC LINE OUT TO
 LIVESTOCK BLDG.



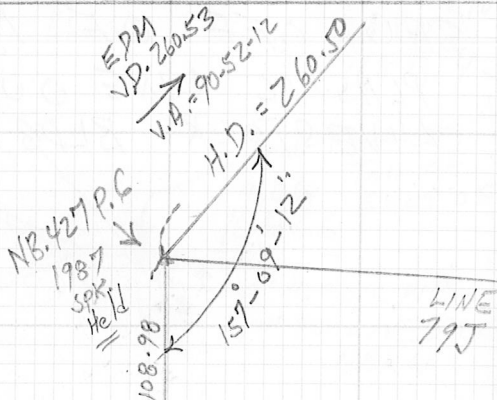
DOOR SILL THAT
 FRONTS ON
 SERVICE RD.

96 NORFOLK COUNTY AGRICULTURAL SCHOOL

Inst. 428 Tape Wthr & Temp. Date Crew

SURVEY TRAVERSE FOR 1989
NEW PLANT SCIENCE BUILDING
IN THE VICINITY OF BUILDINGS

157-09-14.02"
202-58-50.02"
359-59-64
T = 85°
RDR. 29.9



Note: Used Plumb Pole
CLOSED HORIZON FOR HORIZ.
ANGLES

LINE 79B

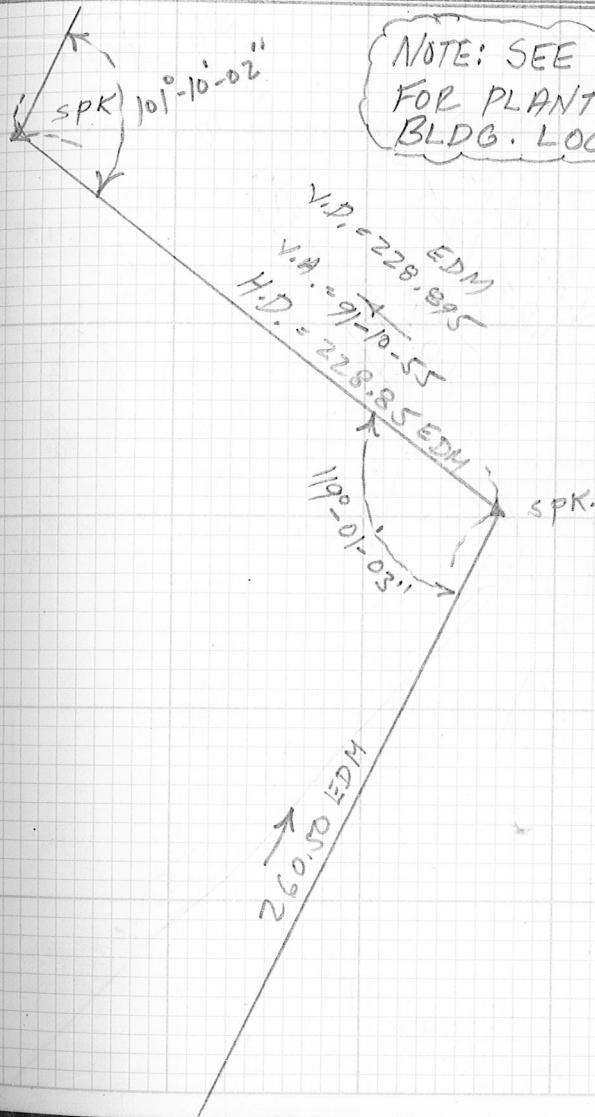
LINE 79J

97

Inst. Topcon Tape Wthr & Temp. Date Crew

LOCATIONS OF THE
AND TOPO SURVEY
NO. 21 AND 22

Aug. 16, 1989
Simpson
Gen. H.
Kelly



NOTE: SEE PG. 120
FOR PLANT SCIENCE
BLDG. LOCATIONS

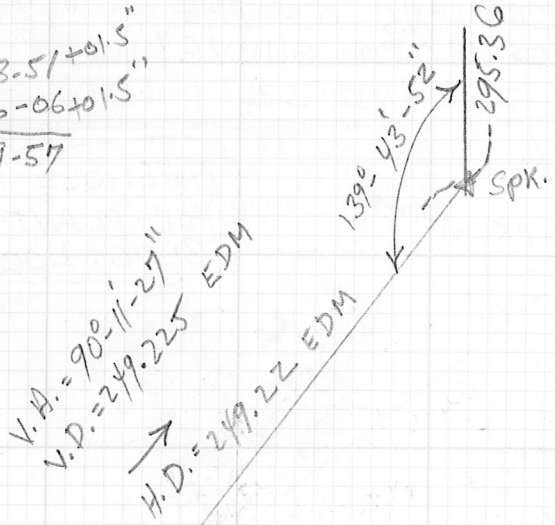
119-01-06
240.59-01
359-60-07
-0.035
-0.035

428/98 NORFOLK COUNTY AGRICULTURAL SCHOOL

428/99

Inst. Tape Wthr & Temp. Date Crew

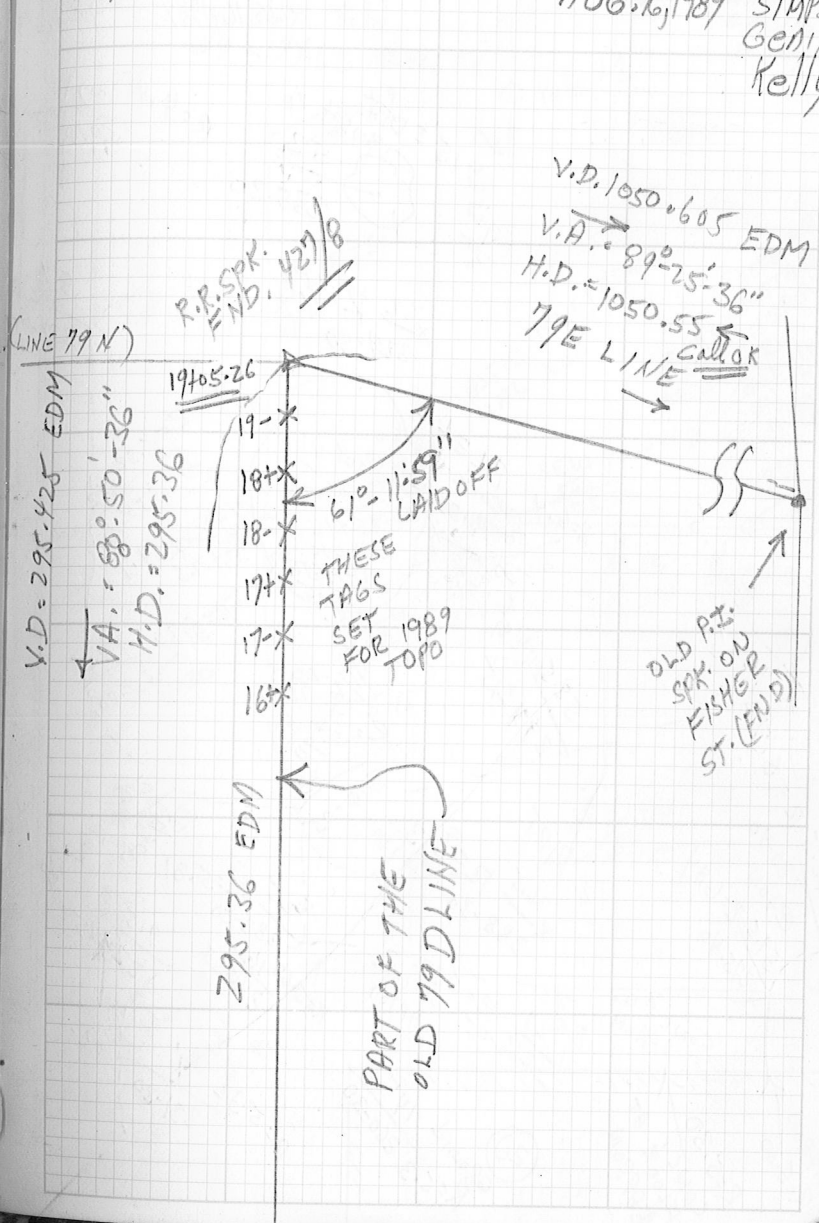
139-43.51 + 01.5"
 220-16-06 + 01.5"
 359-59-57



258-49.56 + 02
 101-10.00 + 02
 359-59-56

Inst. Tape Wthr & Temp. Date Crew

AUG. 6, 1989 SIMPSON
 GENI, Kelly



V.D. 1050.605 EDM
 V.A. 89°-25'-36"
 H.D. = 1050.55 EDM
 79E LINE

(LINE 79 N)

V.D. = 295.425 EDM

V.A. = 88°-50'-36"
 H.D. = 295.36

R.R. SPK. FND. 427/8

19405.26

19-X
 18-X
 18-X
 17-X
 17-X
 16-X

THESE TAGS SET FOR 1989 TOPO

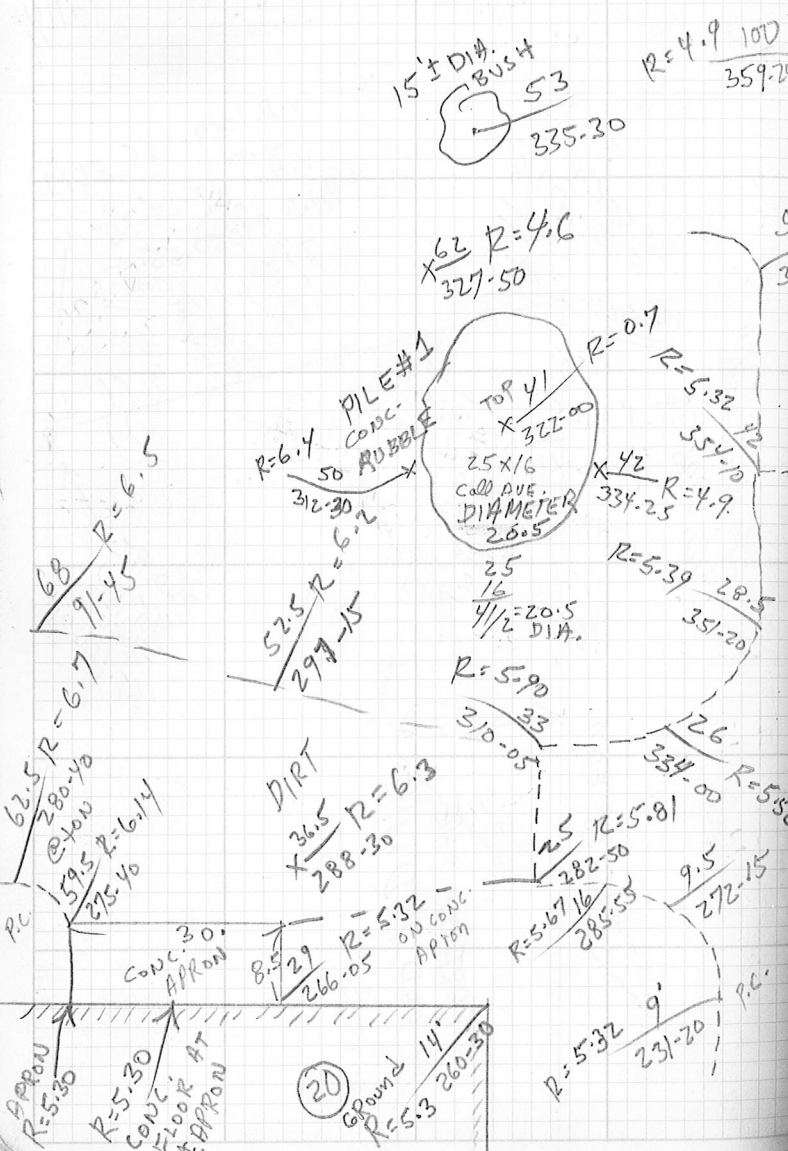
295.36 EDM

PART OF THE OLD 79D LINE

OLD P.T. SPK. ON FISHER ST. (FND)

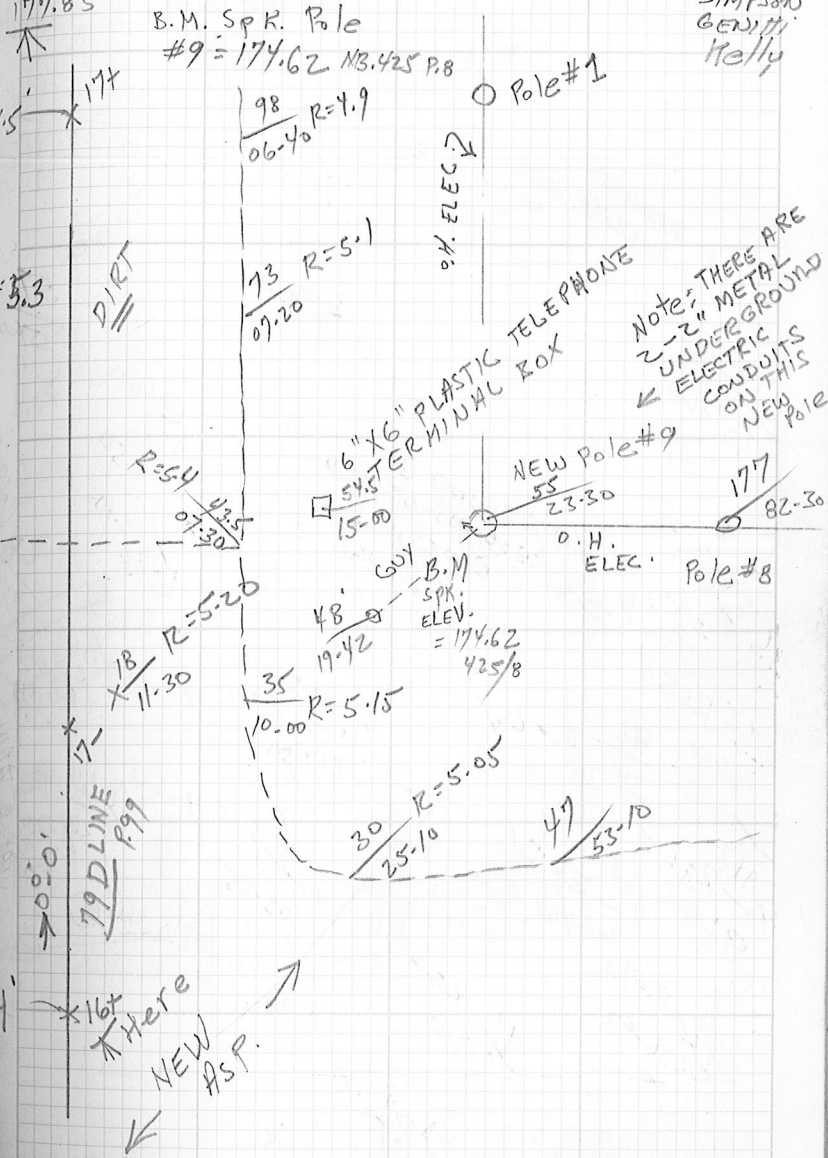
100 NORFOLK COUNTY AGRICULTURAL SCHOOL 428 TOPO SURVEY

Inst. _____ Tape _____ Wthr & Temp. _____ Date AUG. 16, 1989 Crew + 3.2



101
Crew SIMPSON, GENTILE, KELLY

Inst. 177.85 Tape B.M. SPK. Pole Wthr & Temp. _____ Date _____ Crew _____



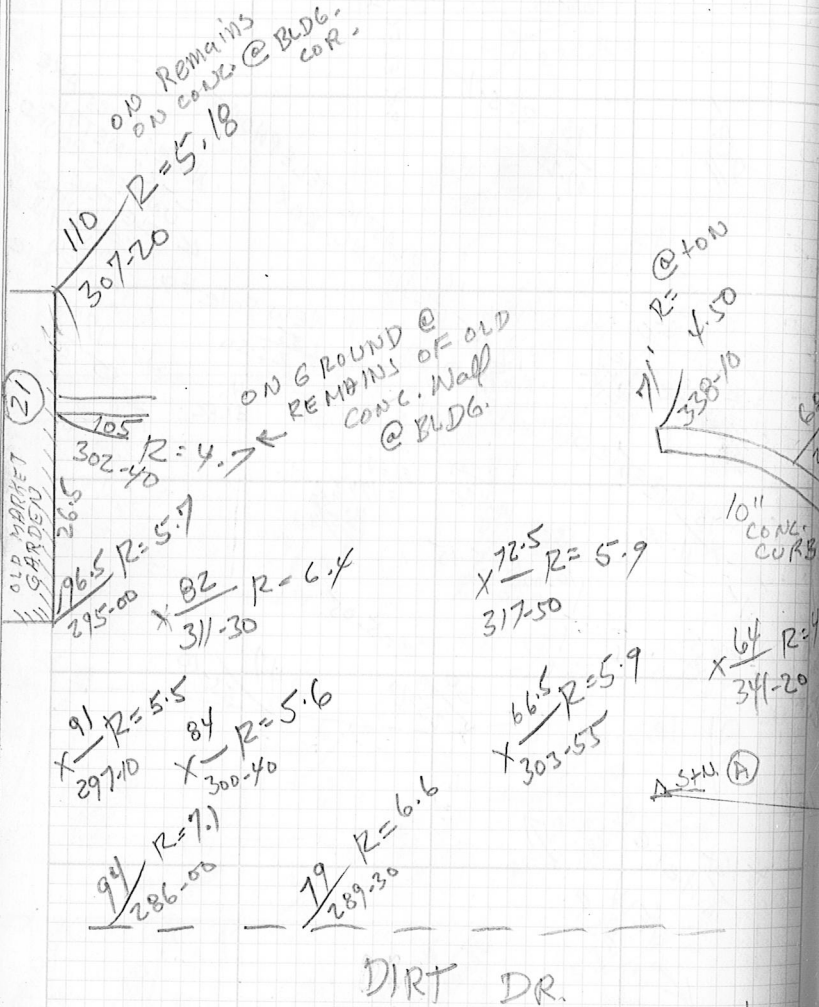
Note: THERE ARE 2-2 1/2" METAL UNDERGROUND ELECTRIC CONDUITS ON THIS NEW Pole

4' X 16' Here NEW ASP.

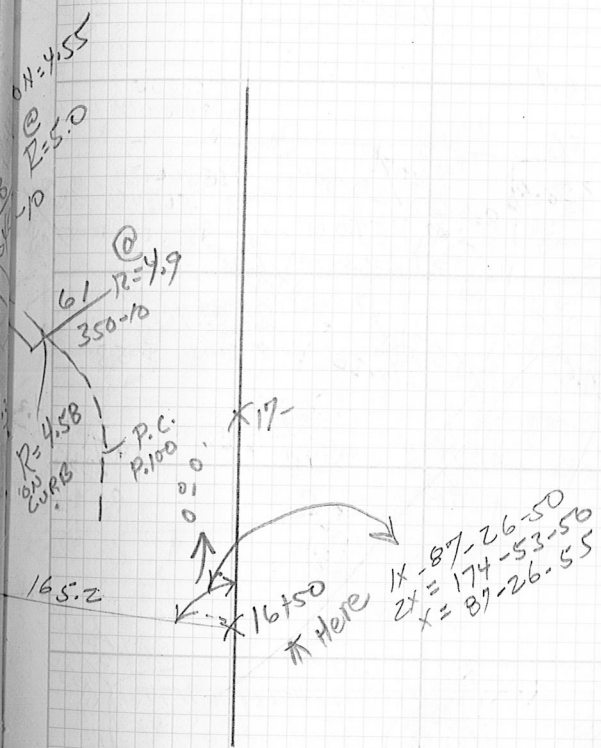
Inst. 1428 Tape Wthr & Temp. Date Crew

Inst. 177.85 FROM TOPP.101 Tape Wthr & Temp. Date AUG. 16, 1989 Crew

SAME SET UP AS ON PG. 101



93.8
71.4
165.2



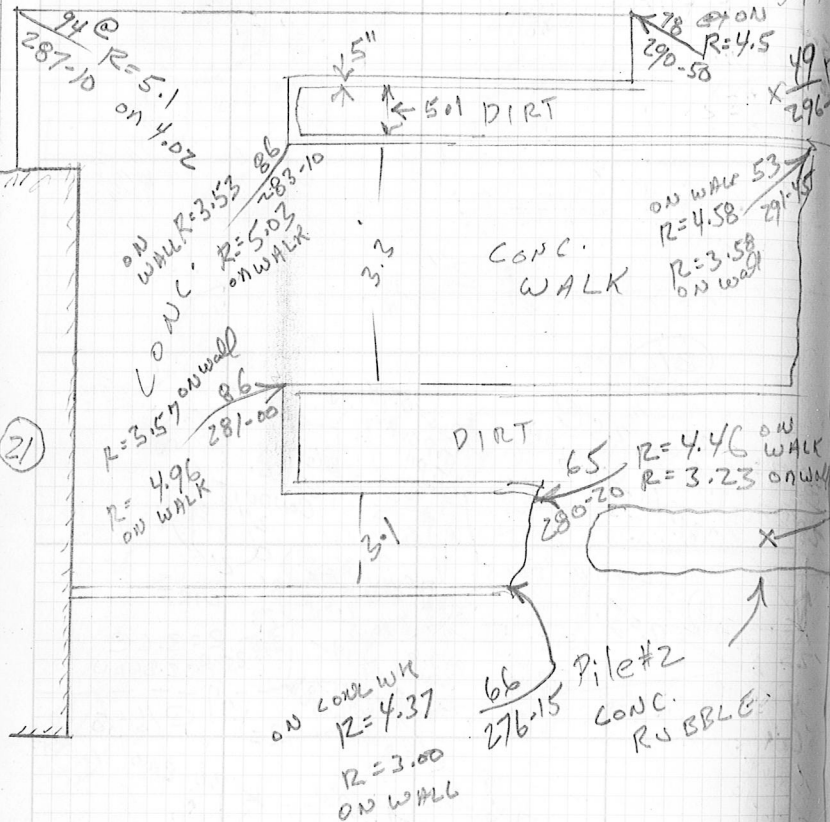
X 16750
↑ Here
X-87-26-50
Z=174-53-50
X=87-26-55

-4.2=173.64 T.P. COR. LOADING DOCK TO OLD MARKET GARDEN

106 NORFOLK COUNTY AGRICULTURAL SCHOOL

Inst. 428 Tape Wthr & Temp. Date 177.68 Crew

118 R=6.2 ACCESS ROAD
 287-45 2 Dia. 283-00 FUEL TANK below 2" pipe
 90 R=5.1 + 3.06
 293-50
 80 R=5.0
 300-45
 59 R=4.5
 309-40



Note:
 OLD CONC.
 FLOWER BEDS
 ETC.
 PARTIALLY
 DESTROYED

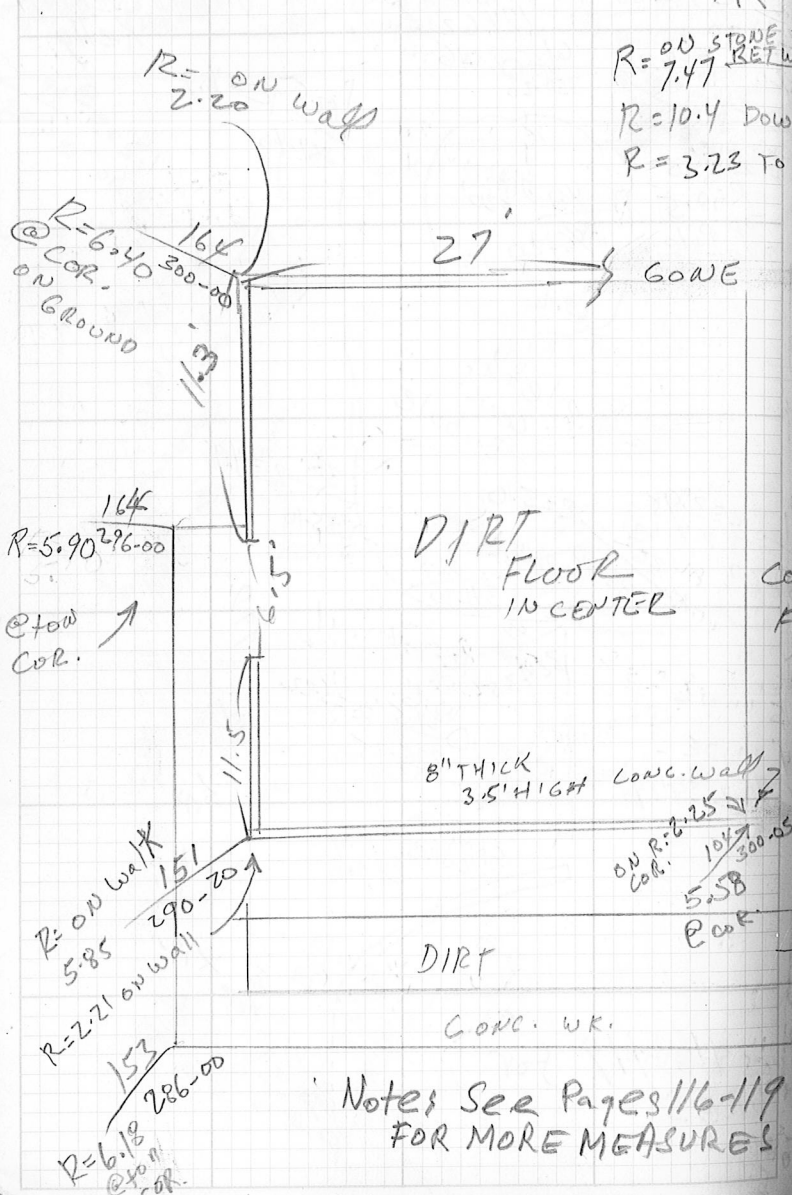
Note: See Pages 116-119 for
 MORE MEASURES

Inst. 428 Tape Wthr & Temp. Date Aug. 17, 1989 Crew Simpson Gehlert Kelly

52.5 R=4.2 Spk. in Pole #9
 332-30 174.62
 R=4.28 61 W6.
 350-20
 62.5 R=4.9
 359-40

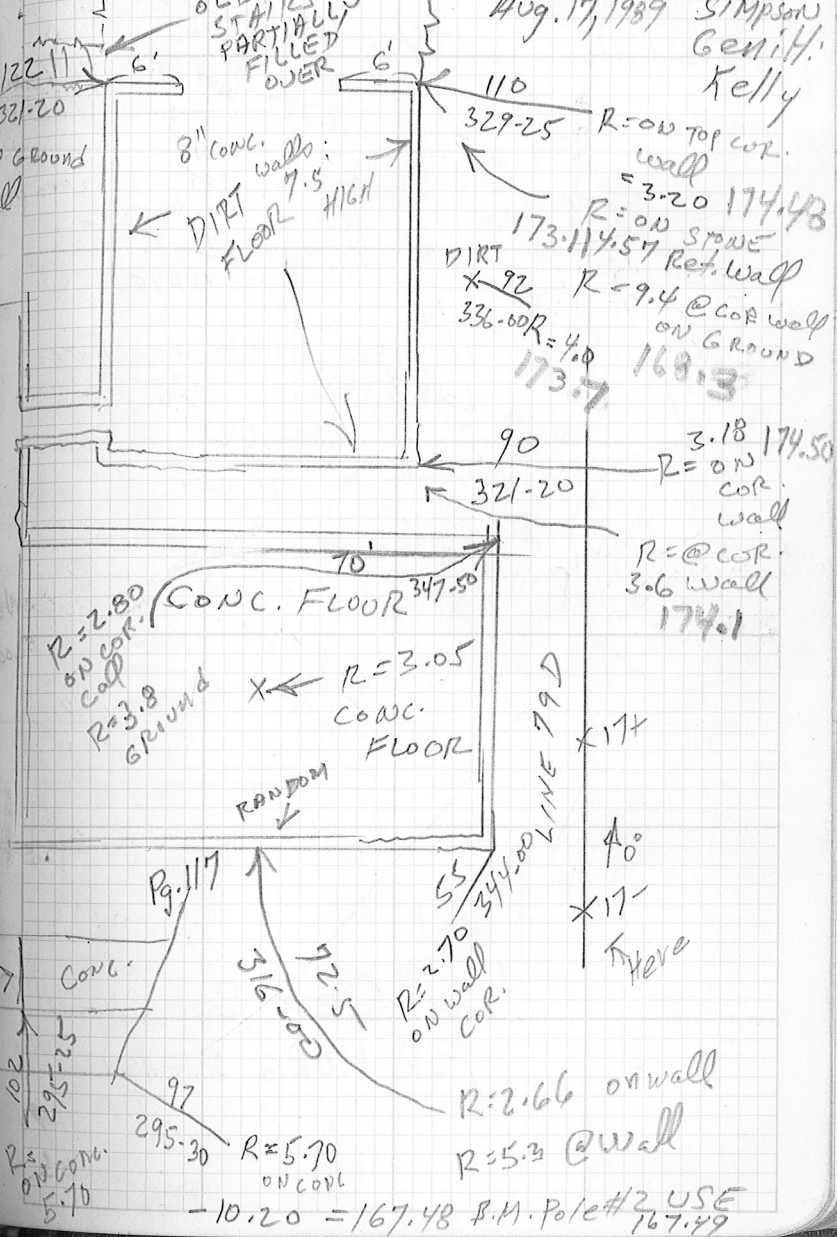


Inst. Tape Wthr & Temp. Date Crew
 1/428 P.106 → 177.68

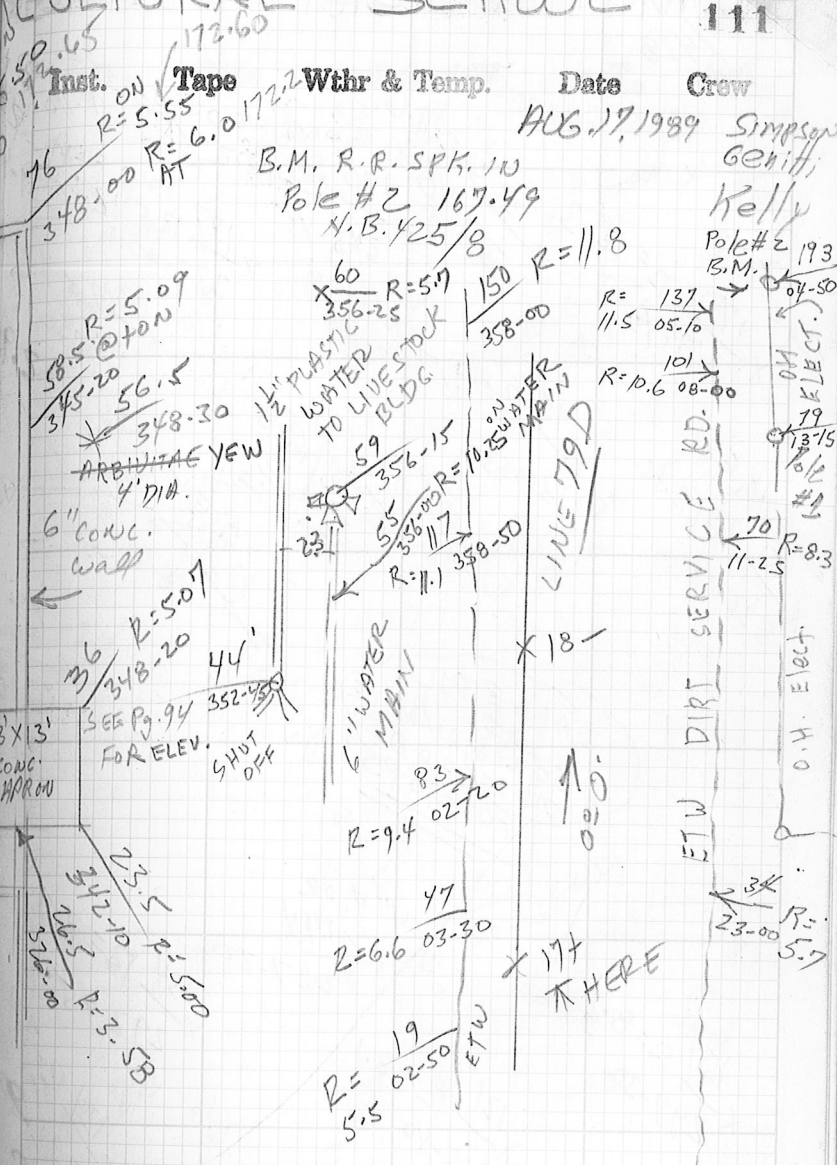
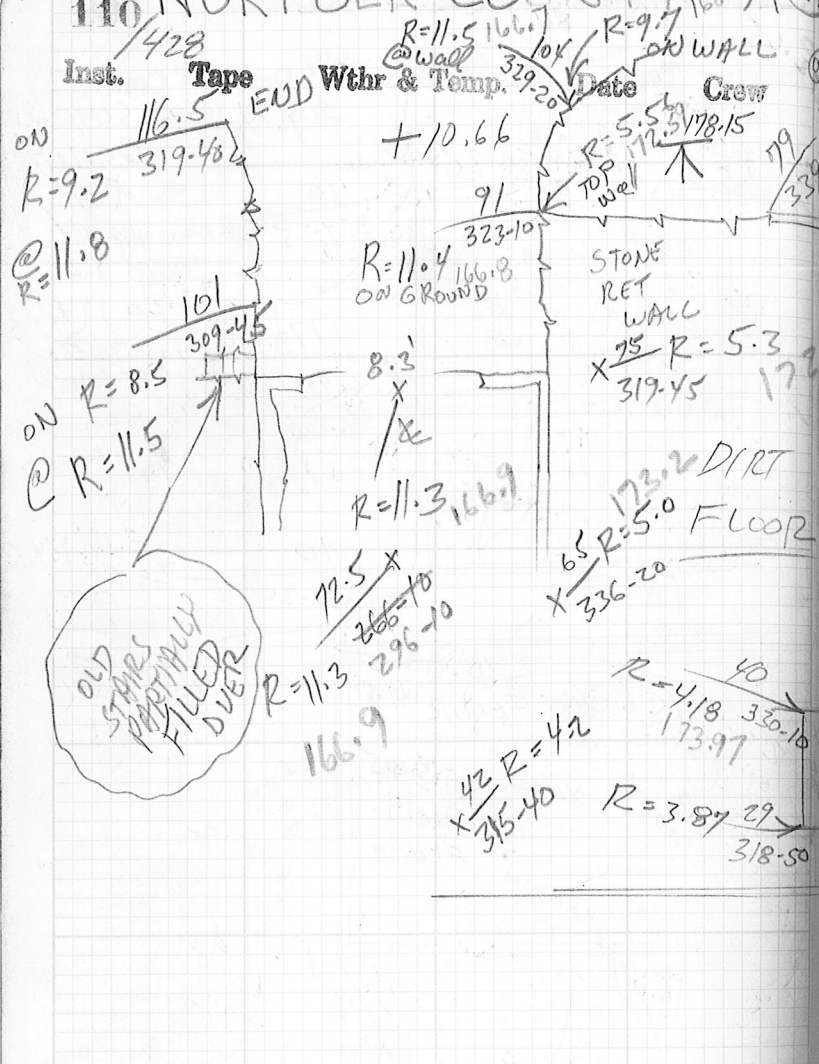


Notes: See Pages 116-119 FOR MORE MEASURES

Inst. Tape Wthr & Temp. Date Crew
 Aug. 17, 1989 SIMPSON Gen.H. Kelly



R=5.70 ON COR. 10.20 = 167.48 B.M. Pole #2 USE 167.49



Note: See Pages 116-119 FOR MORE MEASURES

NORFOLK COUNTY AGRICULTURAL SCHOOL

112
/428

113

Inst.	Tape	Wthr & Temp.	Date	Crew
38			178-15	P.110
			OLD FIELD	
			170	
			318-40	
			R=12.3	
			202	
			301-40	
			R=11.6	
			130	
			345-45	
			R=12.2	
			147	
			332-00	
			R=12.1	
			133	
			326-30	
			R=11.3	

Edge old Field
X $\frac{151}{326-10}$ R=12.1

X $\frac{175}{300-30}$ R=9.7

GN R=11.9
R=9.7
105
333-00

LARGE PILE
OF
SOIL MAN MADE
DIS REGARDED
FOR T.O.P.O

X $\frac{154}{297-30}$ R=8.4

X $\frac{121}{306-40}$ R=8.1

4" pipe
144
X $\frac{144}{287-20}$

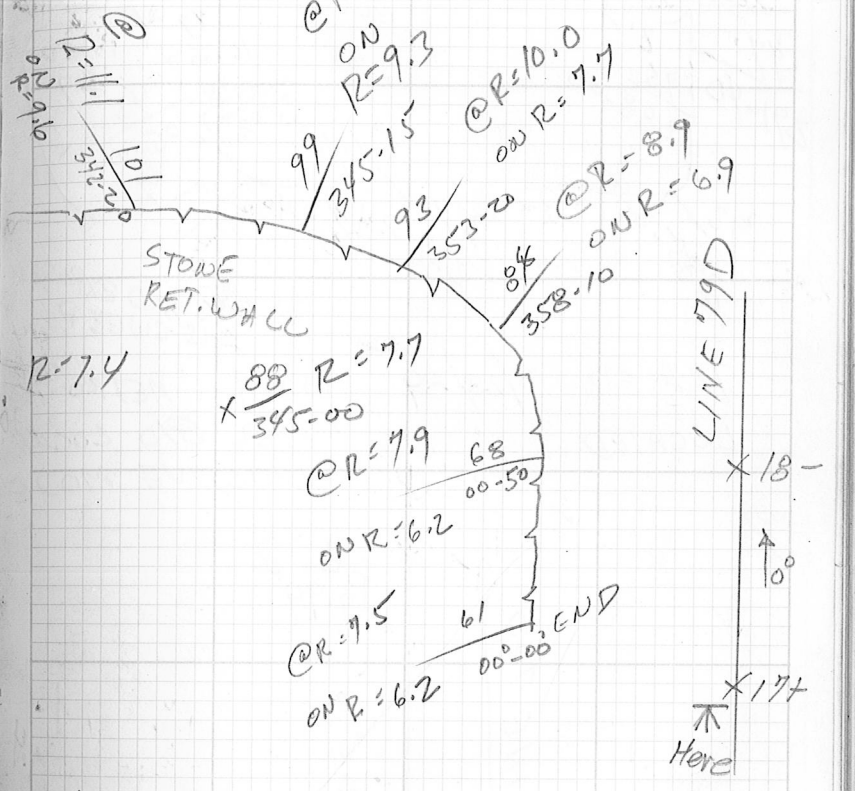
X $\frac{134}{292-45}$ R=7.7

@ wall
 $\frac{122}{285-10}$ R=6.6

X $\frac{124}{292-50}$ R=7.4

X $\frac{103}{297-10}$ R=7.3

Inst.	Tape	Wthr & Temp.	Date	Crew
			123	
			330-00	
			R=12.0	
			118	
			343-15	
			R=12.0	
			108	
			355-00	
			R=10.4	

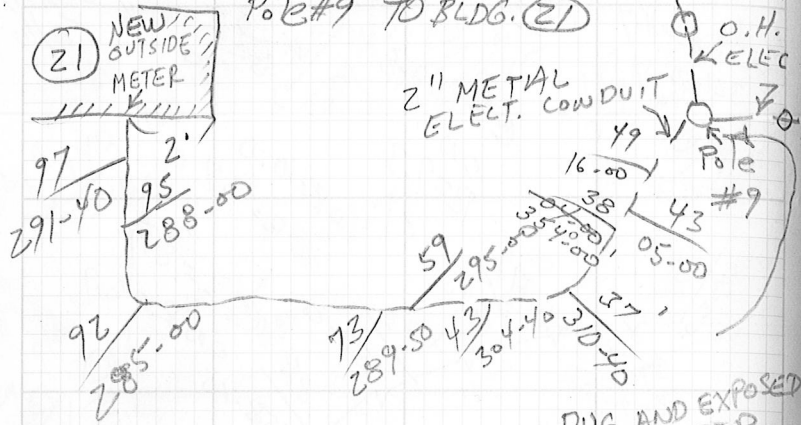


-3.53 = 174.62 B.M. SPK. in Pole #9

5114 NORFOLK COUNTY AGRICULTURAL SCHOOL 428/115

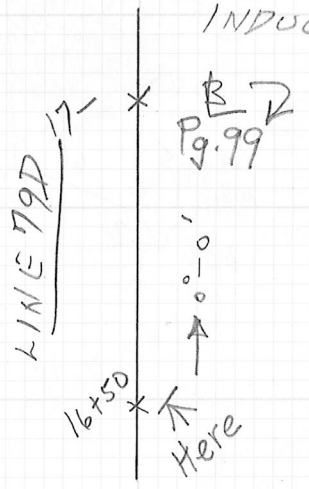
Inst. Tape Wthr & Temp. Date Crew
 8/23/89 SIMPSON

TRACE & LOCATE 2" ELEC. CONDUIT
 Pole #9 TO BLDG. (21)



DUG AND EXPOSED
 THIS SWEEP

TRACED 8/23/89 WITH METRO-TECH
 + MODEL 810 LOCATED INDUCTIVE MODE
 LOCATED

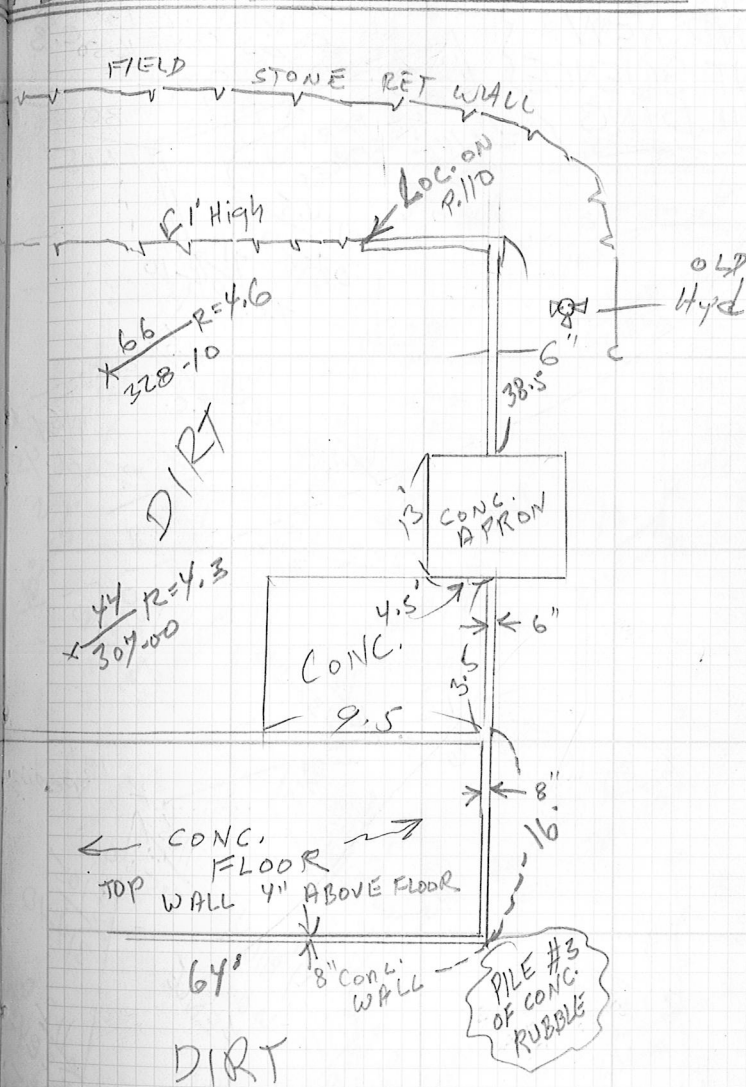
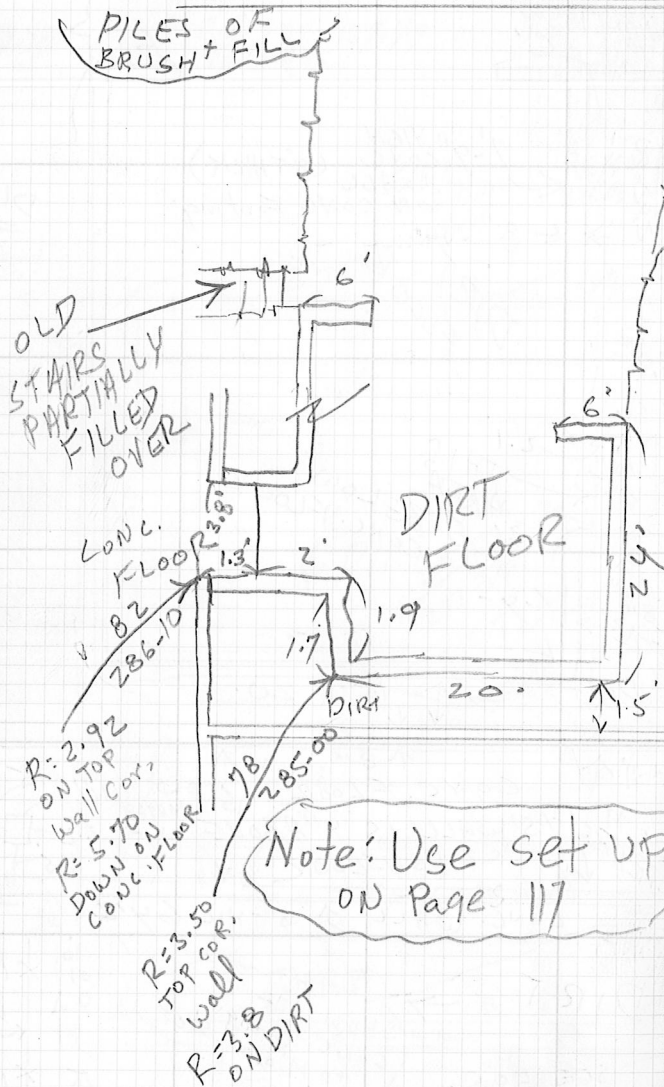


Inst. Tape Wthr & Temp. Date Crew

Inst. Tape Wthr & Temp. Date Crew

MORE DETAILED SKETCH AND MEASURES OF FOUNDATION REMAINS

Aug. 28, 1989 Simpson Genithy



SERVICE RD. → TO LIVESTOCK BLDG.

NORFOLK COUNTY AGRICULTURAL SCHOOL

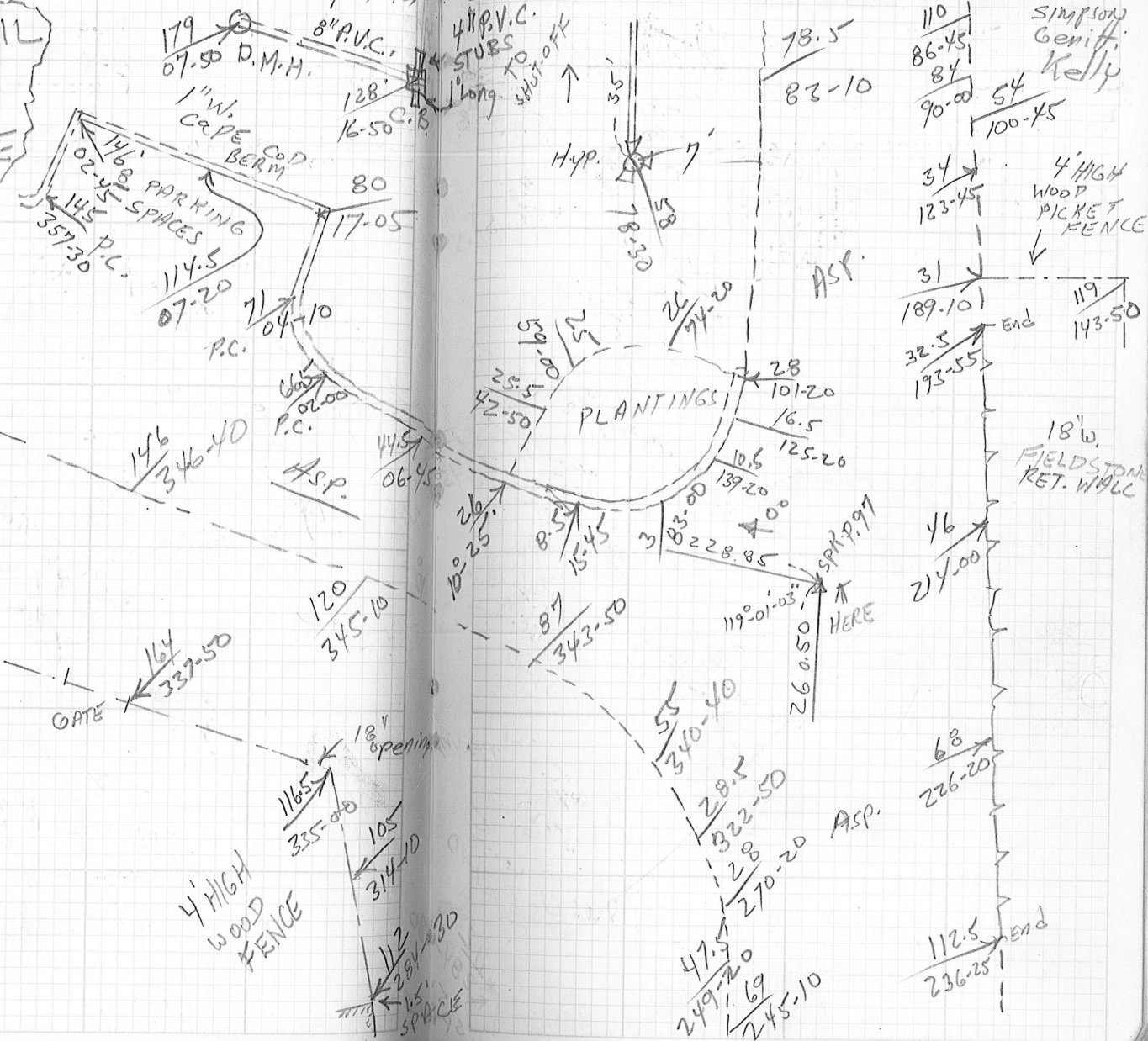
120

121

Inst. Tape Wthr & Temp. Date Crew
Inst. Tape Wthr & Temp. Date Crew

1989 DETAIL
LOCATIONS
AROUND NEW
PLANT SCIENCE
BUILDING

Aug 22, 1989



110	SIMPSON
86.45	Genitt
84	Kelly
90.00	54
100.45	

4' HIGH
WOOD
PICKET
FENCE

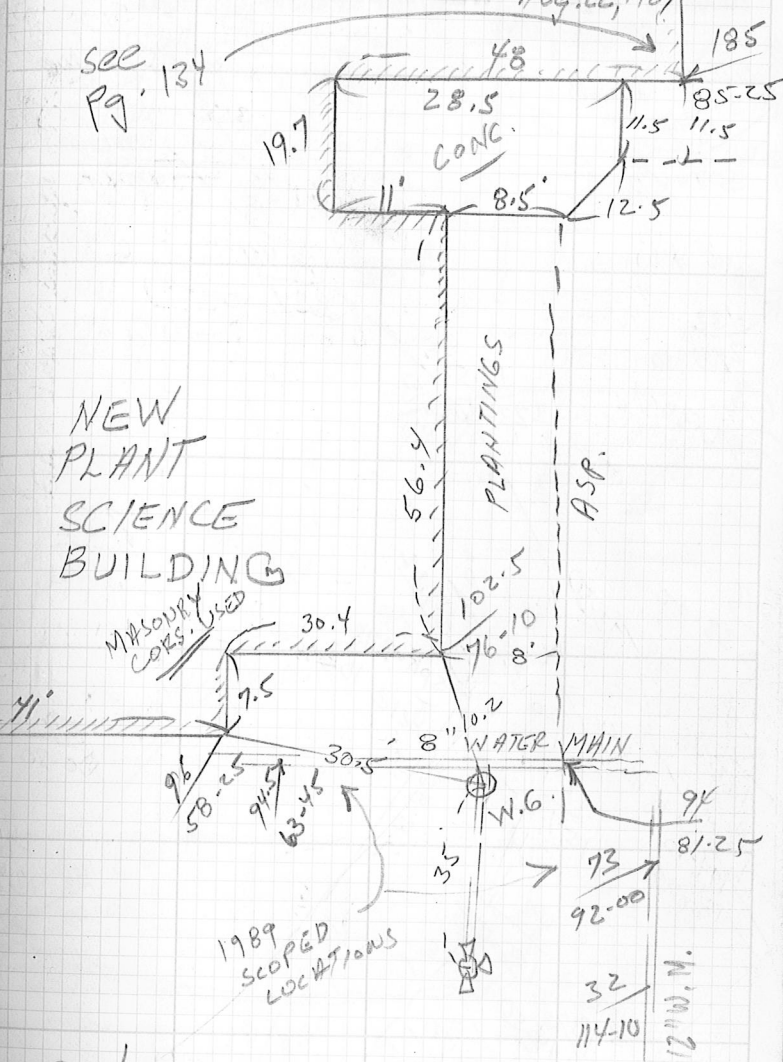
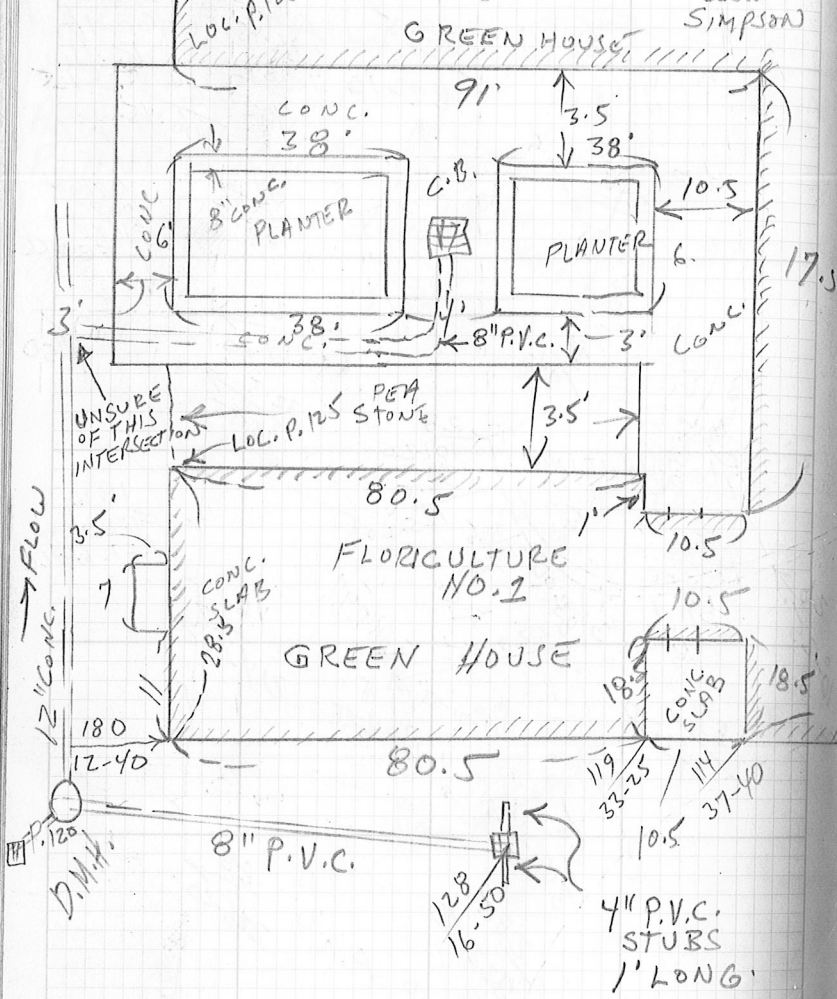
34	
123.45	
31	
189.10	End
32.5	
193.55	
119	
143.50	

18" W.
FIELDSTONE
RET. WALL

46	
24.00	
68	
226.20	
112.5	End
236.25	

Inst. **Tape** Wthr & Temp. Date Crew

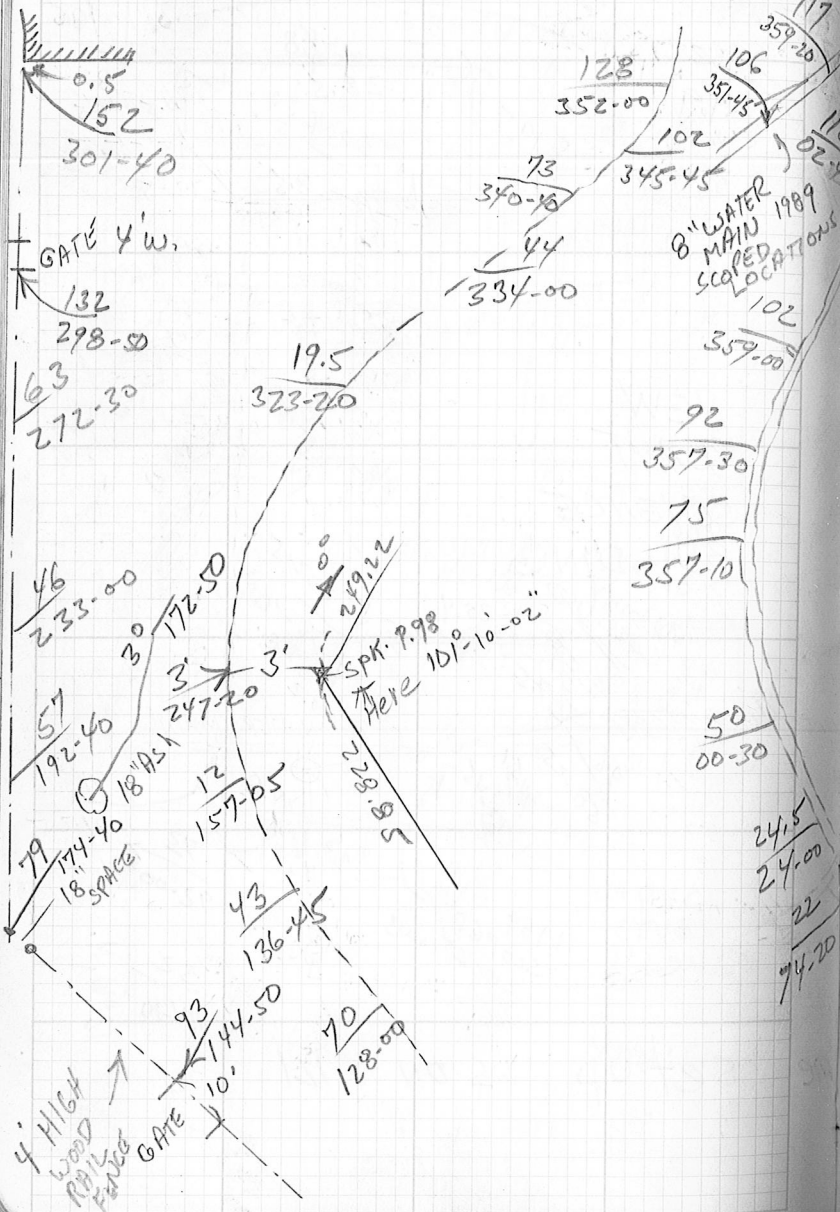
Inst. **Tape** Wthr & Temp. Date Crew



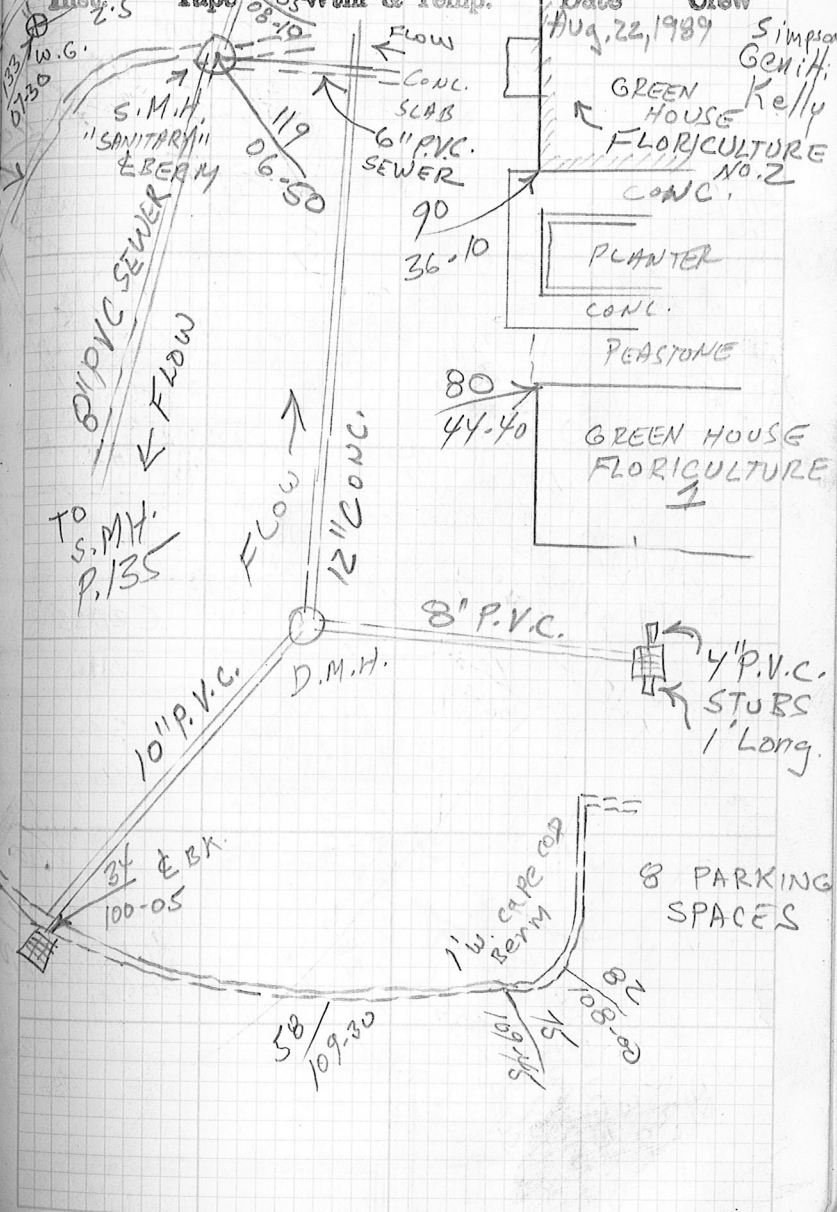
Note: Use same setup as on Pg. 121

124 NORFOLK COUNTY AGRICULTURAL SCHOOL 125

Inst. Tape Wthr & Temp. Date Crew

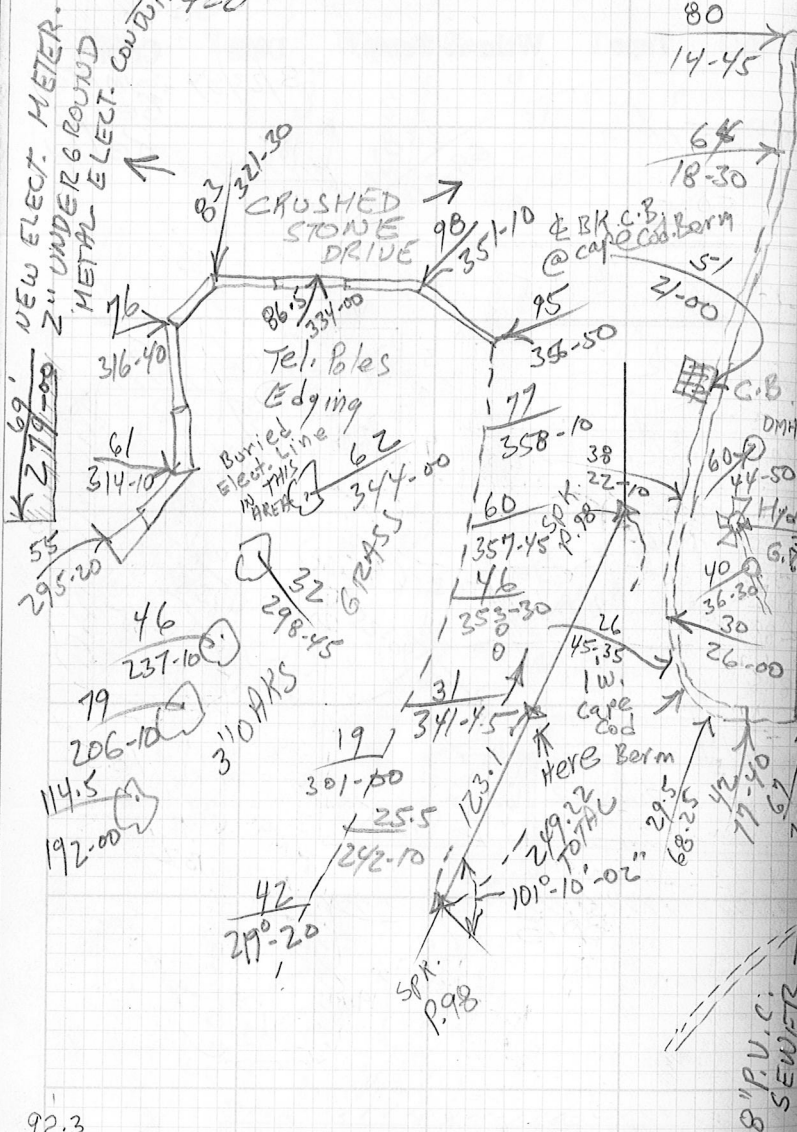


Inst. Tape Wthr & Temp. Date Crew

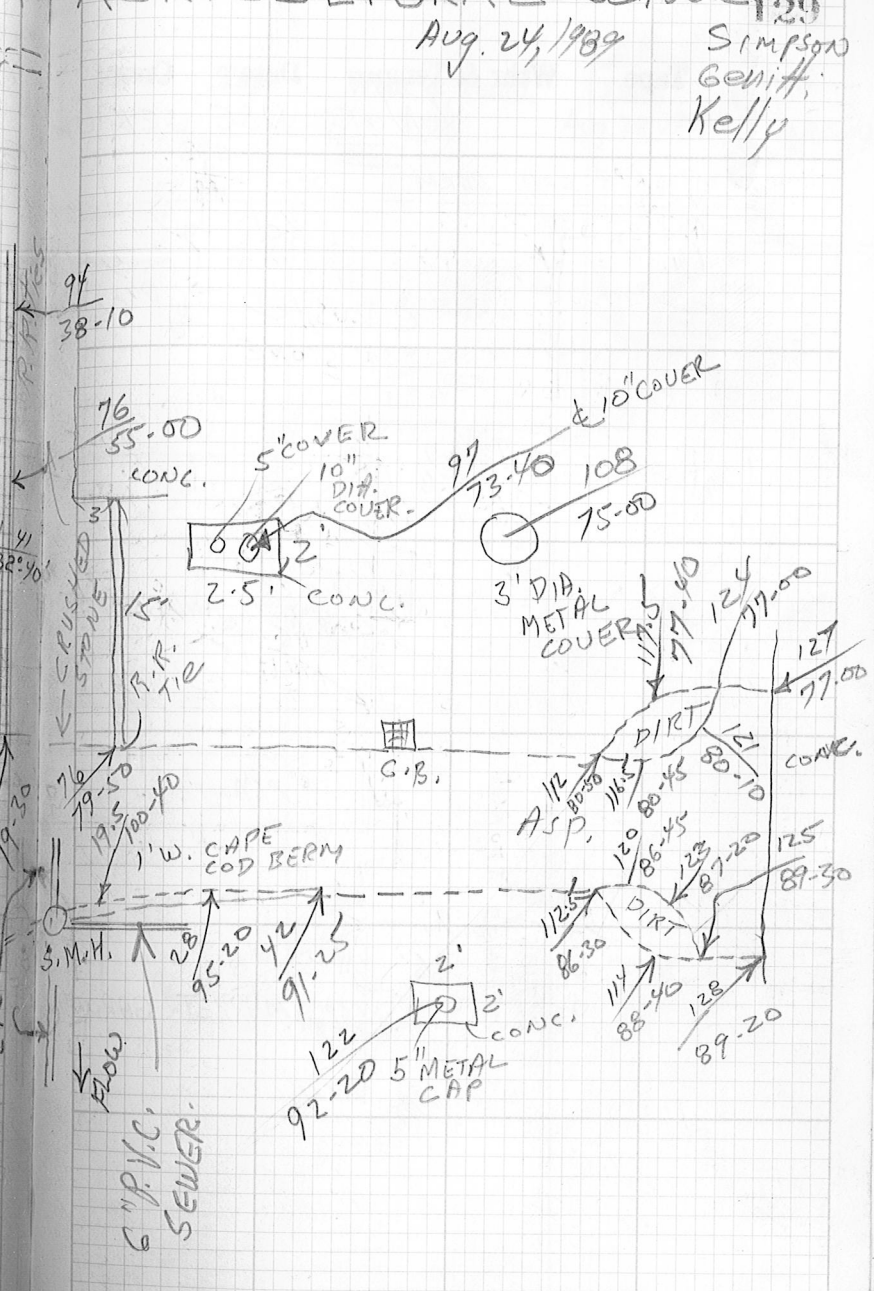


Aug. 24, 1939

Simpson
Genitt
Kelly



92.3
30.8
123.1



6" P.V.C. SEWER

130

NORFOLK COUNTY AGRICULTURAL SCHOOL

SCHOOL

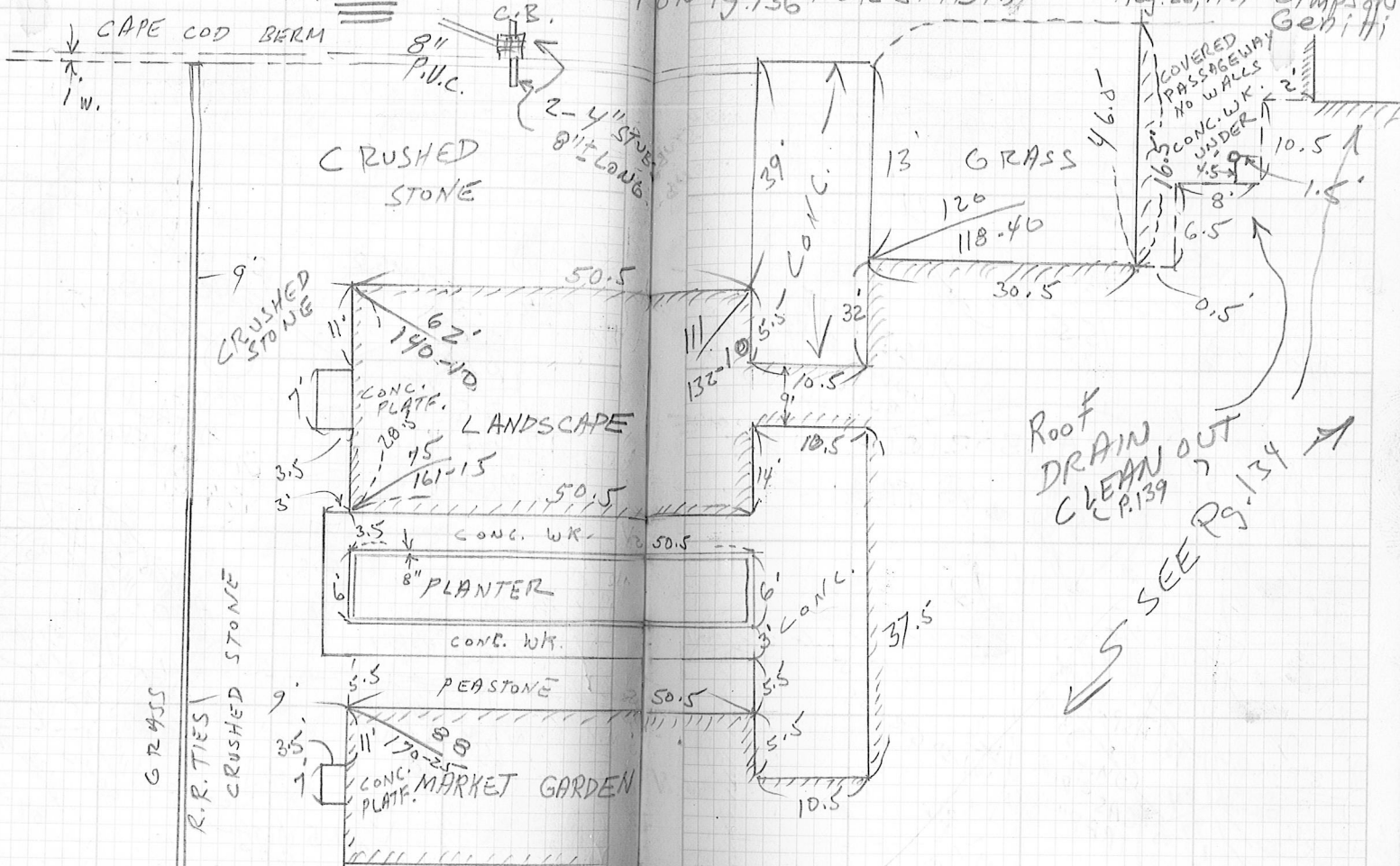
428

SEE 131

Inst. Tape Wthr & Temp. Date Crew

*NOTE USE SET UP ON Pg. 136 FOR STADIA

Bo. P. 132
Date Aug. 28, 1989 Crew Simpson Geritti

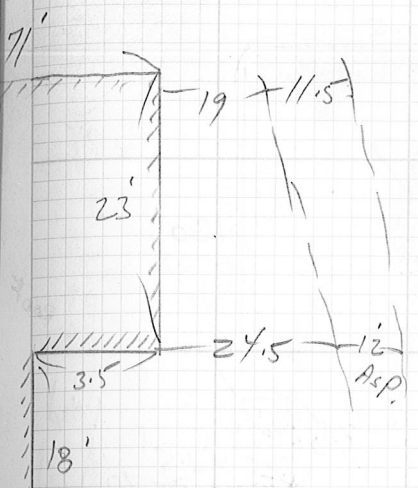
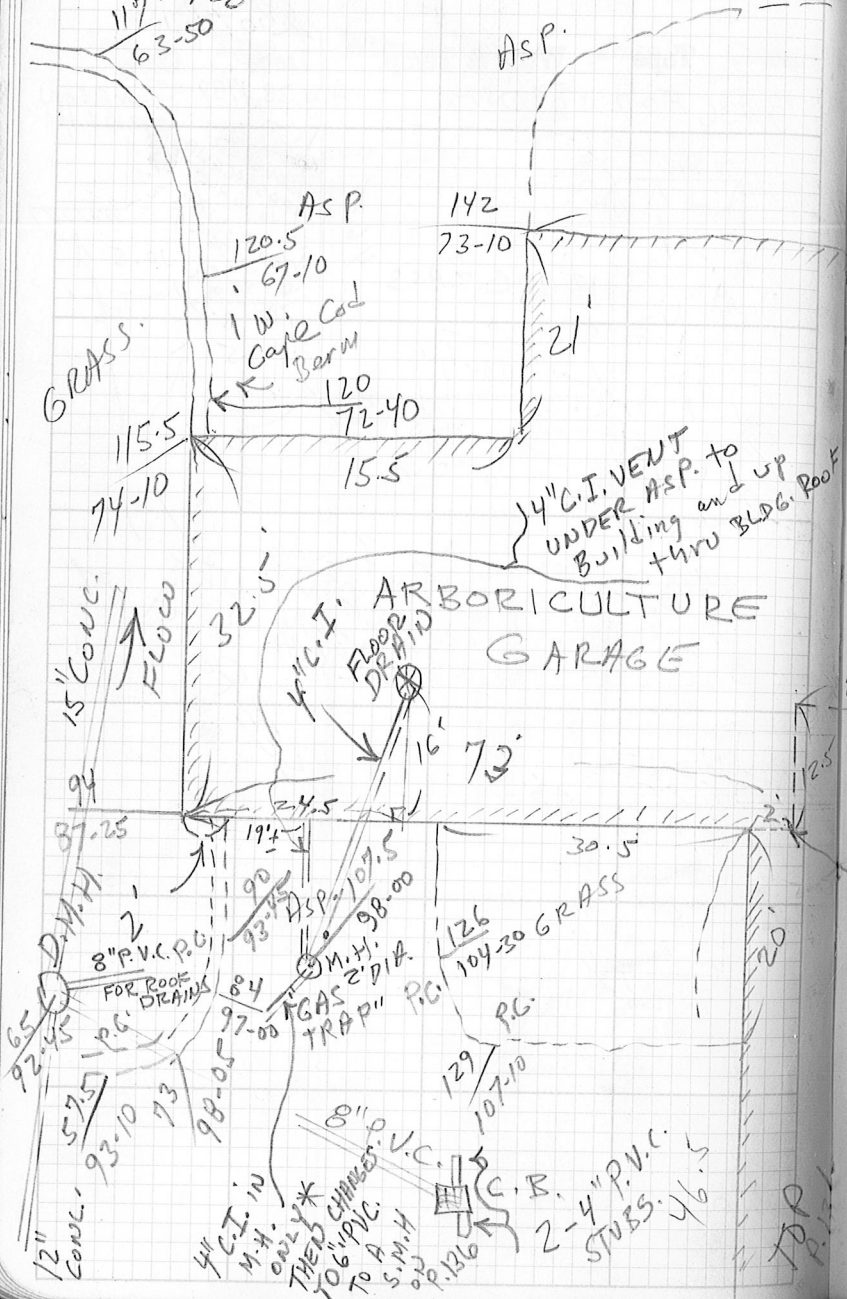


Roof
DRAIN
CLEAN OUT
P. 139

SEE Pg. 134

Aug. 30, 1989 SIMPSON
Genitt;

2
31.5
19.0

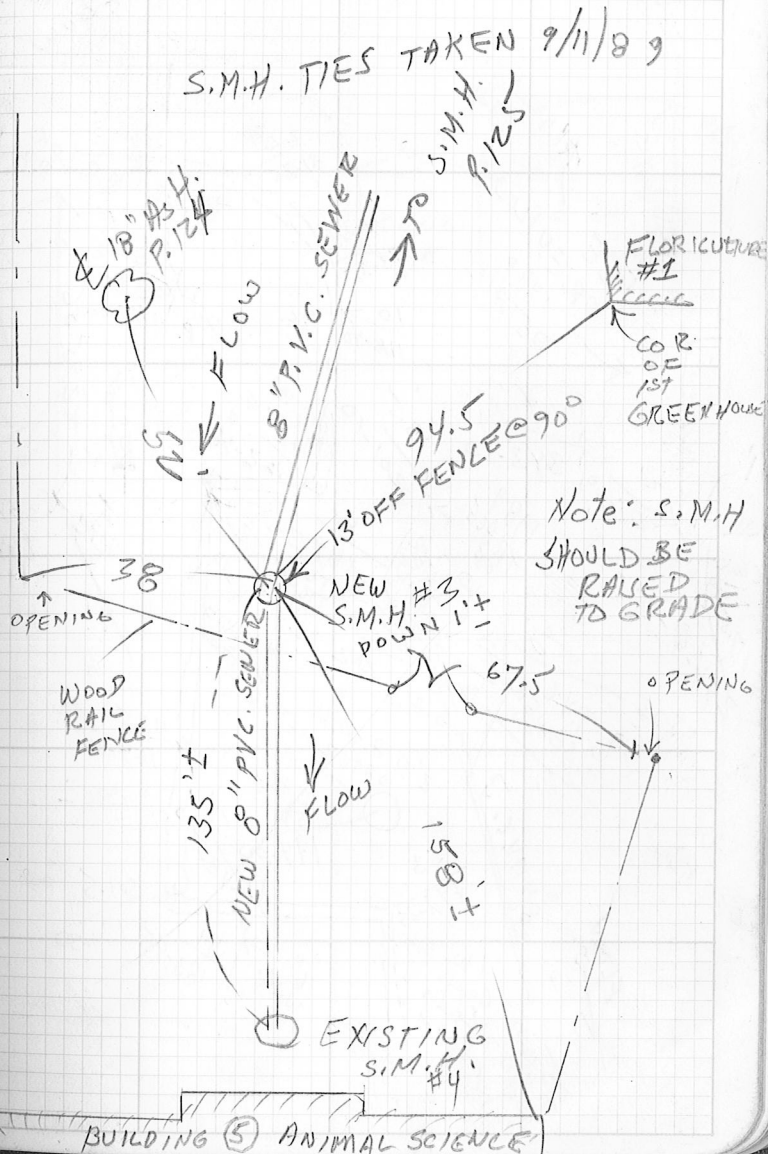
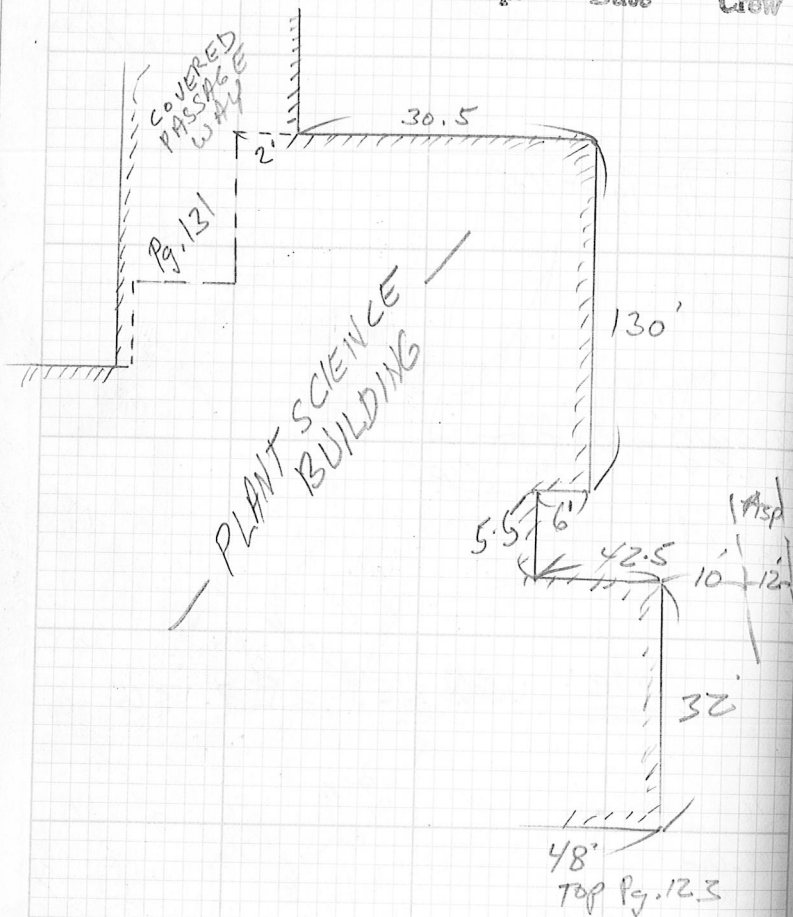


Note: USE SET UP P. 136

161
102.45

Inst. Tape Wthr & Temp. Date Crew

Inst. Tape Wthr & Temp. Date Crew
8/30/89 Simpson Genitt



Note: S.M.H SHOULD BE RAISED TO GRADE

BUILDING (5) ANIMAL SCIENCE

Inst. 428

Tape

Wthr & Temp.

Date

Crew

USE SET UP ON P. 136

Note A This 15" CONG. PIPE GOES DOWN THE SERVICE RD. TOWARDS FISHER ST. AND MAKES A BEND NEAR POLE #6 THEN CONNECTS TO THE EXISTING. D.M.H. - USE ARCHITECTS "AS BUILT" DRAWING DATED. JUNE 20, 1989



SEE NOTE A THIS PAGE

Inst.

Tape

Wthr & Temp.

Date

Crew

R.R. SPK. P. 99

96.94

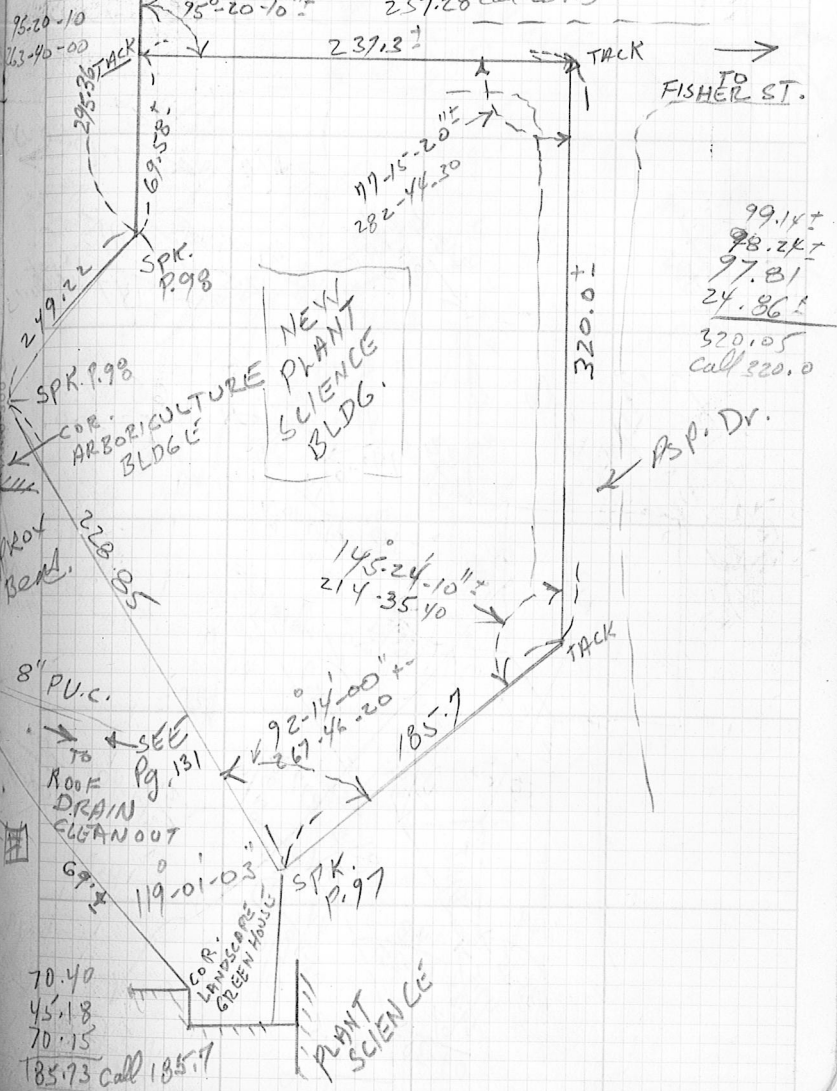
96.90

73.44

237.28 Call 237.3

8/30/89

SIMPSON GENITH

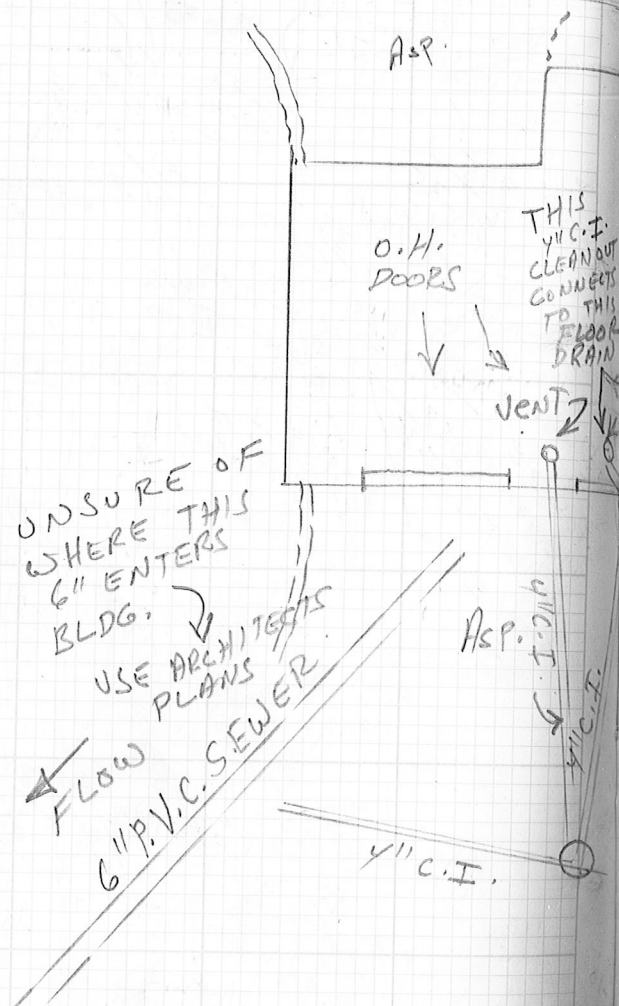


70.40
45.18
70.15
185.73 Call 185.7

99.14
98.24
97.81
24.86
320.05
Call 320.0

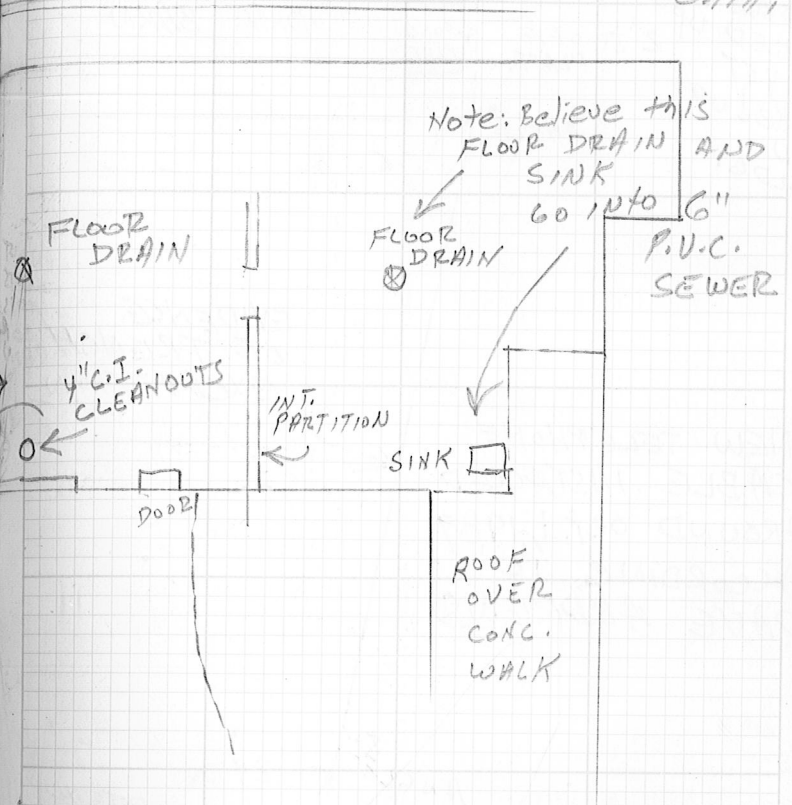
Inst. Tape Wthr & Temp. Date Crew

SEWER CONNECTION



Inst. Tape Wthr & Temp. Date Crew

ARBORICULTURE GARAGE



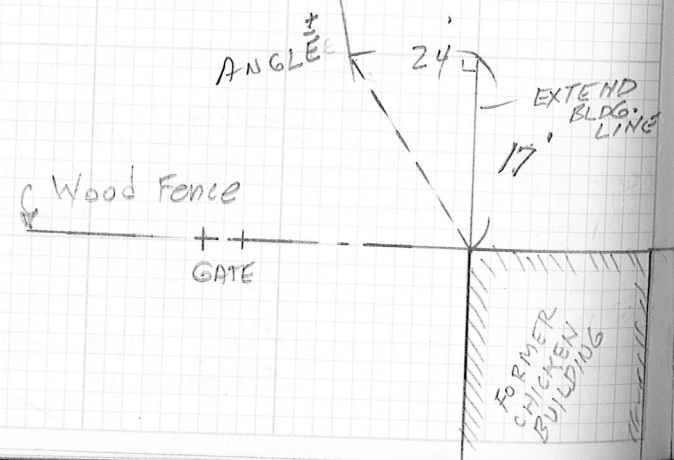
Note: The Architects Plans should be used to put on these utilities UNLESS EXTENSIVE SCOPING IS USED to Find pipe LOCATIONS EXACTLY

End of
 CABLE FOUND
 COILED UP
 Not YET
 Hooked up
 IN
 BLDG.



EVIDENCE
 OF TRENCH
 EXCAVATION

NEW TELEPHONE
 CABLE INSTALLED
 AROUND Oct. 1, 1989
 ACCORDING TO
 DAVE ANDREWS



Inst. Tape Wthr & Temp. Date Crew



146 NORFOLK COUNTY

Inst. ¹⁴²⁸ Tape Wthr & Temp. Date Crew

NOTES RELATIVE TO WATER LINE
TAKING PLACE AT THE SCHOOL
SEE PLAN DATED SEPT. 15, 1989
"MISC. SITE IMPROVEMENTS"

THURSDAY

ON JUNE 28, 1990 (A.M.) SIMPSON, SULLIVAN
AND MET WITH DAVE ANDREWS (MANAGER OF
CONTRACTOR FROM WEYMOUTH WHO WAS
THIS MEETING WAS TO REVIEW WITH THE
SHOT OFFS THAT HE MIGHT NEED SO
MAIN OUT AT LOCUS SO HE CAN
THE END OF THE 6" LINE.

WE SHOWED THE CONTRACTOR ALL
STARTING AT MAIN ST. AND PROCEEDING
WE EXPLAINED HOW OVER THE PAST
CERTAIN SHUT-OFFS THAT SUPPOSEDLY
WERE NEVER ABLE TO FIND THEM.
THE MAIN SUPPLY OF WATER WAS
DIFFICULTY HE COULD TURN THEM
EVEN BE WELL BEFORE THE METER PIT. I BELIEVE IT WAS THE INTENT
OF THE WALPOLE WATER DEPT. THAT
ALL WATER COMING IN FROM MAIN ST.

CONTRACTOR WILL DO THIS HYDRANT WORK ON 7/2/90

SEE NEXT PAGE FOR NOTES ON 7/3/90

AGRICULTURAL SCHOOL ⁴²⁸
~~147~~Inst. Tape Wthr & Temp. Date Crew
July 3, 1990 SIMPSON
CAREW

AND CONSTRUCTION
LATE JUNE AND EARLY JULY 1990
BY COUNTY ENGRS. DEPT. TITLED

AND KELLY WENT OUT TO THE SCHOOL
AND LOUIS T. POMPEO THE
AWARDED THE CONTRACT. THE PURPOSE OF
CONTRACTOR THE VARIOUS WATER MAIN
HE CAN SHUT DOWN THE 6" (OLD) WATER
INSTALL A NEW VALVE & HYD. AT

THE SHUT OFFS THAT WE NEW ABOUT
ALL THE WAY OUT BACK TO LOCUS
WE HAVE HAD DIFFICULTY FINDING
WERE TO HAVE BEEN INSTALLED BUT WE
HOWEVER HE DID UNDERSTAND THAT
FROM MAIN ST. AND IF HE HAD
OFF WAY OUT AT MAIN ST. THIS WOULD
I BELIEVE IT WAS THE INTENT
THIS NEW METER PIT WOULD METER

148 NORFOLK COUNTY

Inst. 428 Tape WATER MAIN Wthr & Temp. Date Crew NOTES

ON 7/2/90 THE CONTRACTOR ATTEMPTED TO SHUT DOWN VARIOUS SHUT-OFFS BUT NO MATTER WHICH ONES HE TRIED (WALPOLE WATER DEPT WAS CALLED IN ALSO) HE WAS UNABLE TO SHUT OFF WATER OUT AT THE HYDRANT HE WAS GOING TO REMOVE. HE HAD MADE A CUT IN THE 6" MAIN JUST BEFORE THE HYDRANT WATER CAME OUT WITH GREAT PRESSURE. AT DAYS END HE PUT A SLEEVE CLAMP OVER THE CUT TO STOP THE WATER LEAK. AS I UNDERSTAND THEY SHUT OFF THE NEW 12" WATER MAIN @ MAIN ST. AND THE CONTRACTOR WAS TOLD THAT THE OLD 6" WATER MAIN SHUT-OFF WAS ALSO IN THE TURNED OFF POSITION.

STILL REACHING THIS HYD. ???? —
BACK OUT TO ASSIST IN THIS ON
IN ATTENDANCE WERE:

WALPOLE WATER DEPT., FIRE CHIEF
ARCHITECT OF NEW PLANT SCIENCE BLDG.,

AFTER SOME DISCUSSION IT WAS DECIDED TO GO BACK OUT TO MAIN ST. AND TRY THOSE TWO SHUT OFFS AGAIN WHILE SOMEONE LOOSENED THE TEMPORARY SLEEVE CLAMP TO CHECK FOR WATER FLOW. THE 12" MAIN WAS SHUT-OFF STILL WATER WAS FLOWING TO HYD. WHEN THE OLD NEARBY 6" MAIN WAS TURNED ON WATER FLOWED TO HYD. WHEN IT WAS TURNED OFF WATER WAS SHUT OFF TO HYD, THEREBY PERMITTING HYD. REPLACEMENT TO PROCEED. W. SIMPSON.

WHAT WAS DONE YESTERDAY WITH WATER DEPT. WE DON'T UNDERSTAND!!

AGRICULTURAL SCHOOL 149

Inst. Tape Wthr & Temp. Date Crew JULY 3, 1990 SIMPSON CAREW

WATER MAIN @ MAIN ST. AND THE OLD 6" WATER MAIN SHUT-OFF WAS

THIS IS RIGHT OUT ON MAIN ST. TOO!
THEN HOW WAS WATER THE ENGINEERING DEPT. WAS CALLED 7/3/90 — SIMPSON & CAREW RESPONDED

WALPOLE ENG. DEPT., PUMPED CONTRACTOR DAVE ANDREWS, SIMPSON & CAREW, AL DOWNS

150/428

Inst.

Tape

Wthr & Temp.

Date

Crew

151

Inst.

Tape

Wthr & Temp.

Date

Crew

152/420

Inst. Tape Wthr & Temp. Date Crew

420/153

Inst. Tape Wthr & Temp. Date Crew

154/428

Inst.

Tape

Wthr & Temp.

Date

Crew

Inst.

Tape

Wthr & Temp.

Date

Crew

155

156/428

Inst. Tape Wthr & Temp. Date Crew

428

157

Inst. Tape Wthr & Temp. Date Crew

158/428

Inst. Tape Wthr & Temp. Date Crew

428

159

Inst. Tape Wthr & Temp. Date Crew

428
160

Inst.

Tape

Wthr & Temp.

Date

Crew