

LEGEND

- — — — — LINE OF ALTERATION
- - - - - EXISTING RIGHT OF WAY LINE
- - - - - ABUTTER PROPERTY LINE
- SB/DH — STONE BOUND WITH DRILL HOLE
- SB/LPT — STONE BOUND WITH LEAD PLUG AND TACK
- FND — FOUND
- — STONE BOUND SET
- CHB — CHORD BEARING
- CHD — CHORD DISTANCE
- PCC — POINT OF COMPOUND CURVATURE
- PRC — POINT OF REVERSE CURVATURE

FOR REGISTRY USE

SHARON CFI L.P.
 ASSESSORS MAP 47 PORTION OF BLOCKS 4-1 AND 4-2
 DEED BOOK 24956, PAGE 335

ASSESSORS MAP 57 BLOCKS 22 AND 24
 DEED BOOK 25422, PAGE 564

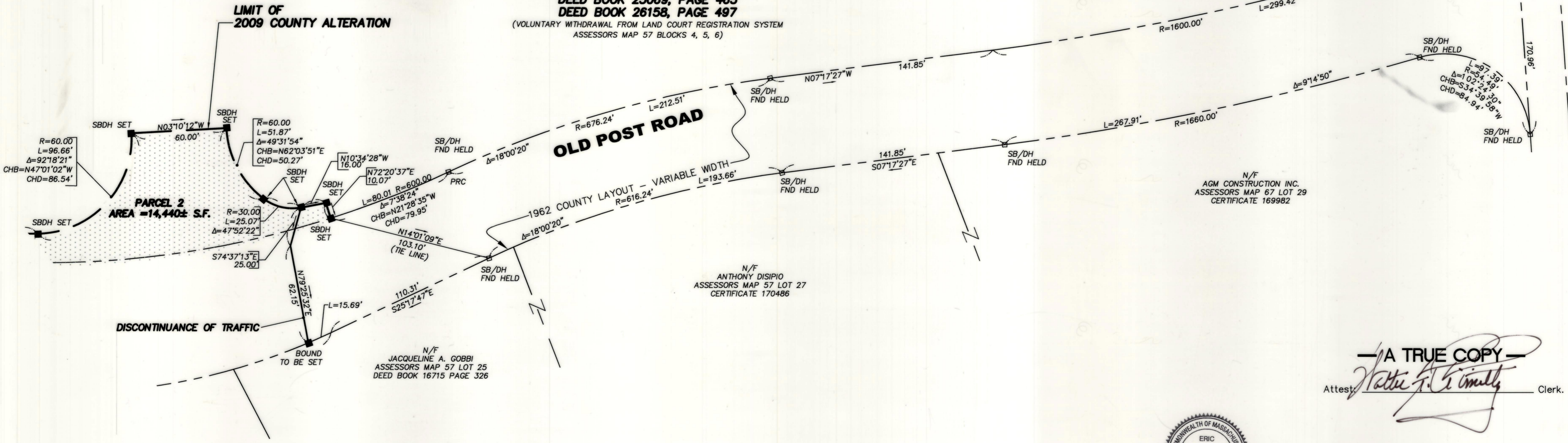
ASSESSORS MAP 57 BLOCKS 4, 5, 6
 DEED BOOK 25069, PAGE 463
 DEED BOOK 26158, PAGE 497

(VOLUNTARY WITHDRAWAL FROM LAND COURT REGISTRATION SYSTEM
 ASSESSORS MAP 57 BLOCKS 4, 5, 6)



SOUTH WALPOLE STREET
 1956 TOWN ALTERATION - 50' WIDTH

FOR CONTINUATION SEE SHEET 4

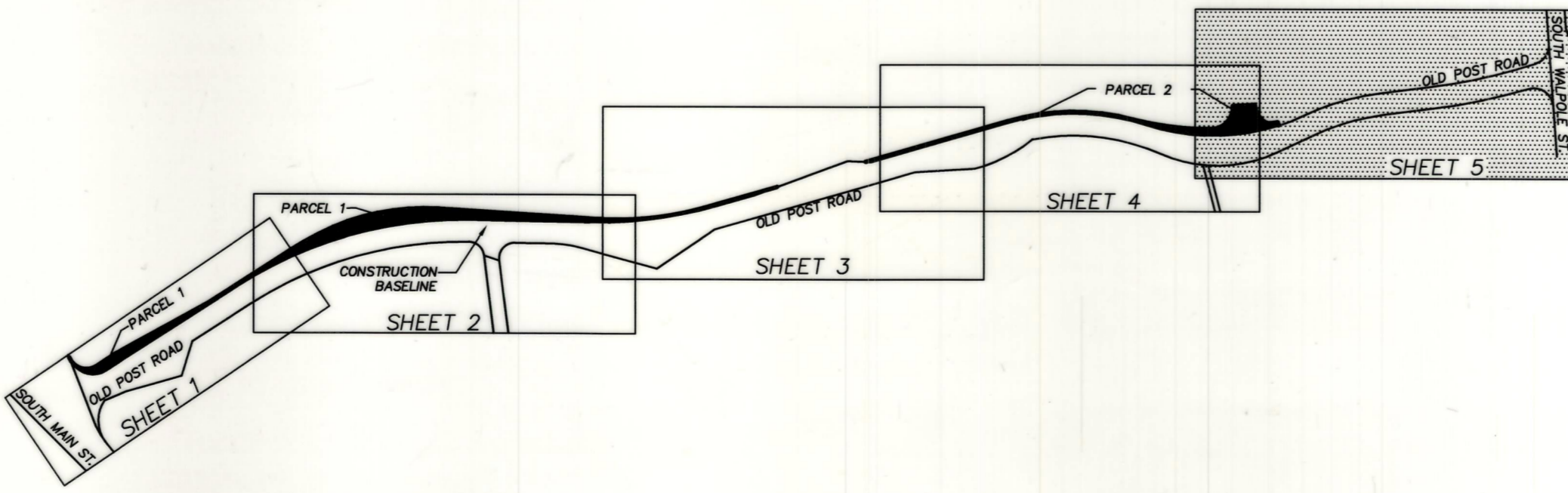
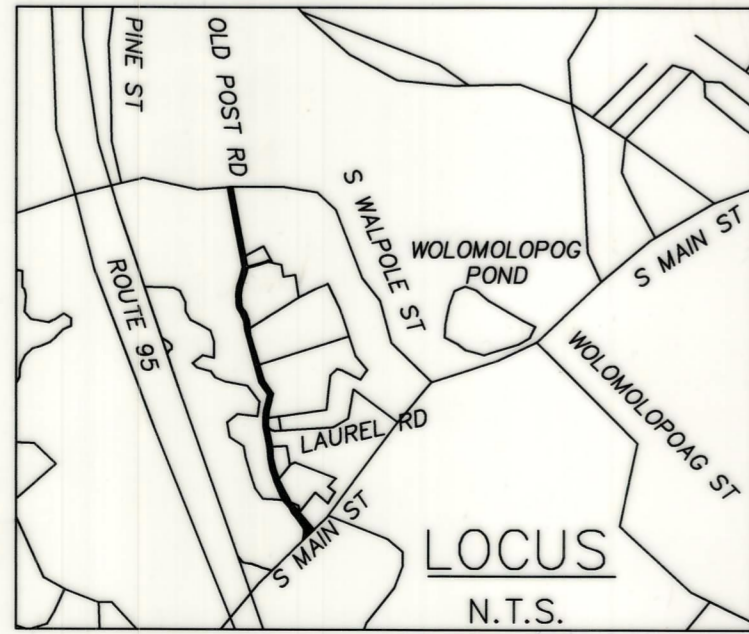
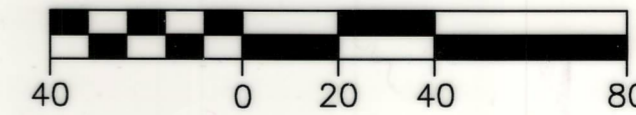
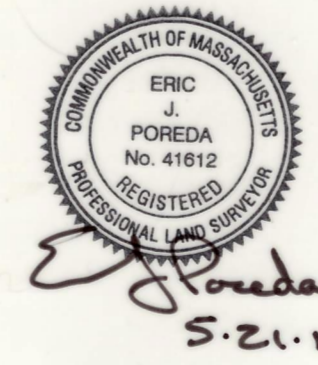


N/F
 AGM CONSTRUCTION INC.
 ASSESSORS MAP 67 LOT 29
 CERTIFICATE 169982

N/F
 ANTHONY DISIPIO
 ASSESSORS MAP 57 LOT 27
 CERTIFICATE 170486

N/F
 JACQUELINE A. GOBBI
 ASSESSORS MAP 57 LOT 25
 DEED BOOK 16715 PAGE 326

— A TRUE COPY —
 Attest: *Valerie E. Conolly* Clerk.



COLER & COLANTONIO INC
 ENGINEERS AND SCIENTISTS

DATE: MARCH 19, 2009
COMP./DESIGN: BPR/WJD
CHECK: NIL/EJP
DRAWN: BPR/JPC/WJD
SCALE: 1" = 40'
JOB NO.: F:\Project\MA\Sharon\OldPostRoad\SharonLifestyleCenter\DWG\
DWG NO.: AITPlan2008.dwg

781-982-5400
 Fax: 781-982-5490

101 Accord Park Drive
 Norwell, MA 02061-1685

REV. 1. 12-16-09 DELINEATE DISCONTINUANCE OF TRAFFIC