

LEGEND

- — — — — LINE OF ALTERATION
- - - - - EXISTING RIGHT OF WAY LINE
- - - - - ABUTTER PROPERTY LINE
- SB/DH — STONE BOUND WITH DRILL HOLE
- SB/LPT — STONE BOUND WITH LEAD PLUG AND TACK
- FND — FOUND
- — STONE BOUND SET
- CHB — CHORD BEARING
- CHD — CHORD DISTANCE
- PCC — POINT OF COMPOUND CURVATURE
- PRC — POINT OF REVERSE CURVATURE

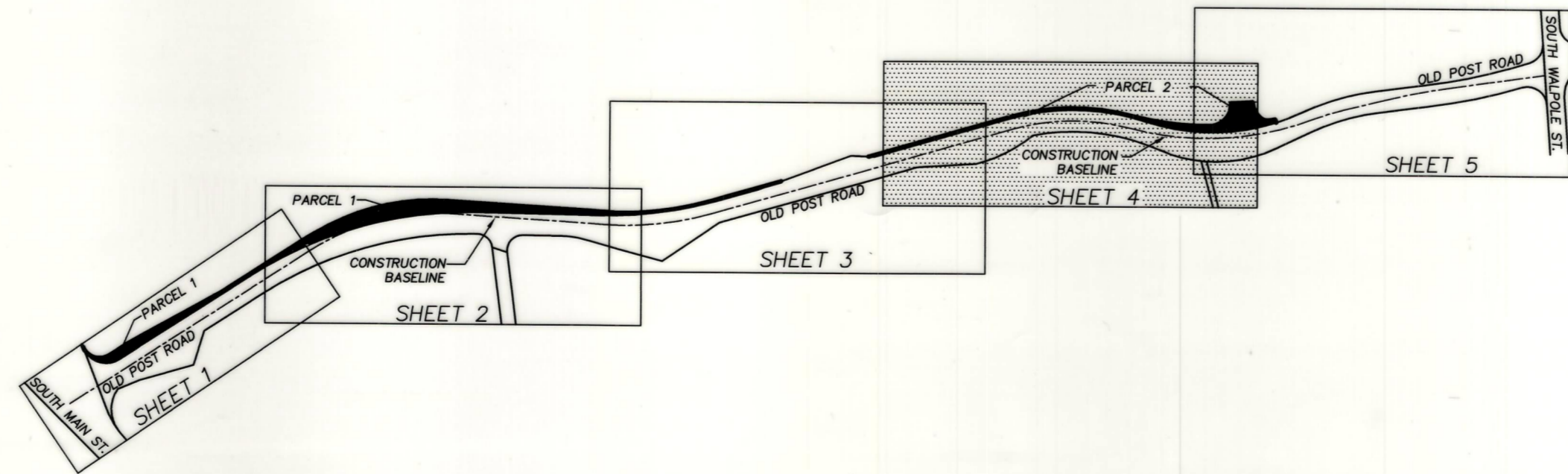
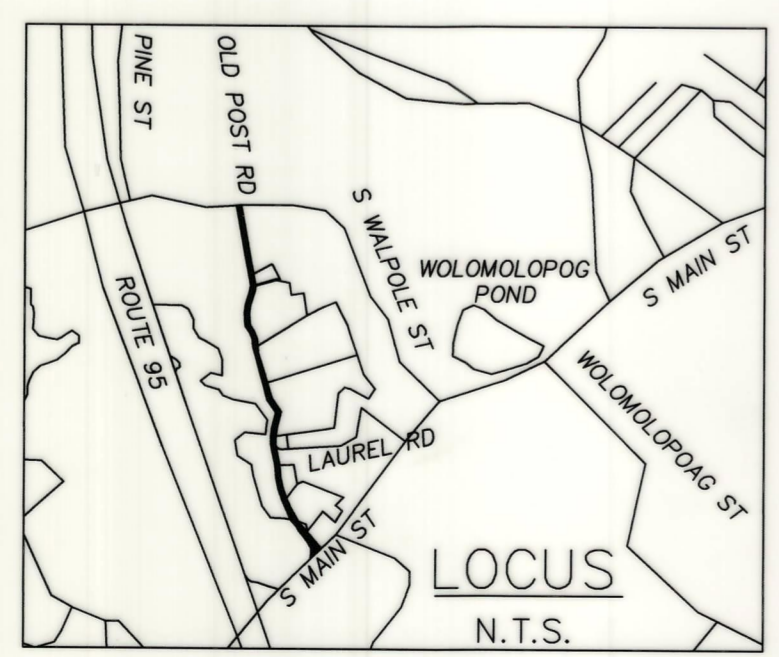
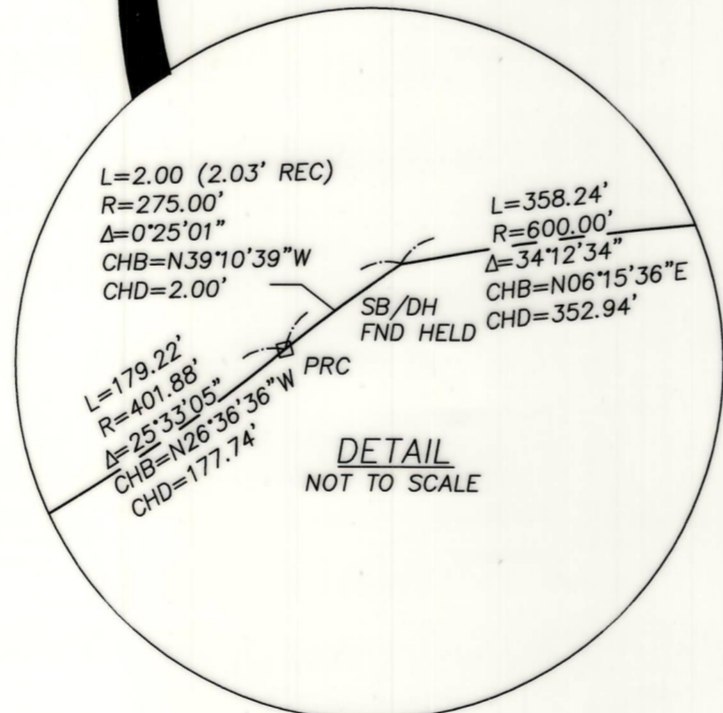
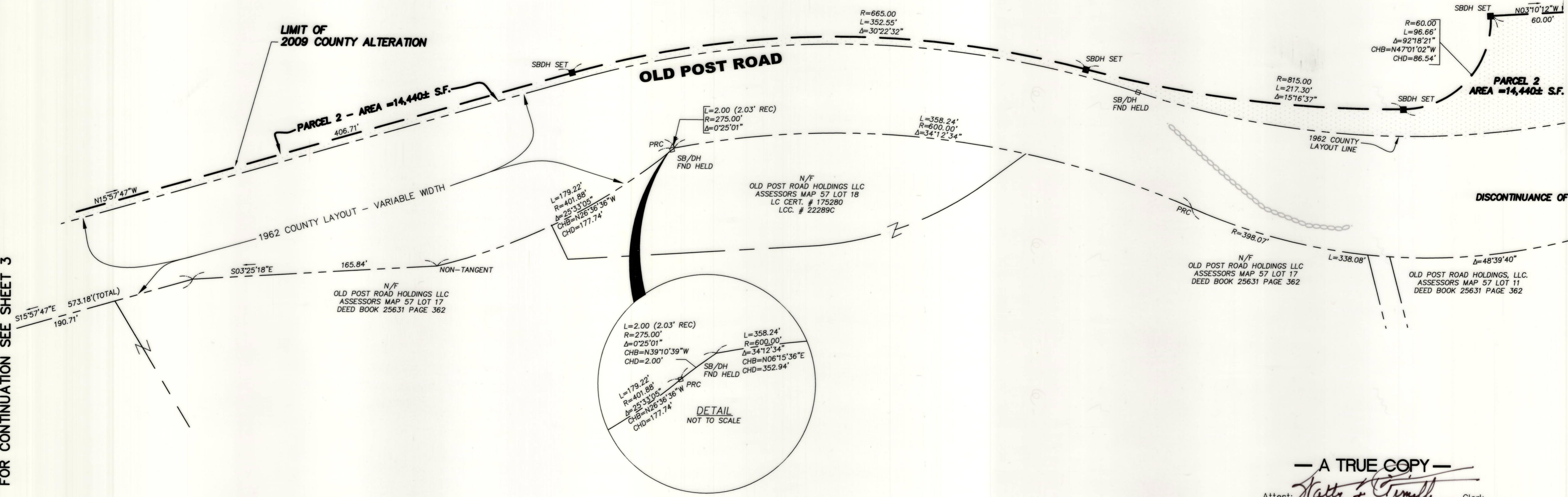
SHARON CFII L.P.
ASSESSORS MAP 47 PORTION OF BLOCKS 4-1 AND 4-2
DEED BOOK 24956, PAGE 335
ASSESSORS MAP 57 BLOCKS 22 AND 24
DEED BOOK 25422, PAGE 564
ASSESSORS MAP 57 BLOCKS 4, 5, 6
DEED BOOK 25069, PAGE 463
DEED BOOK 26158, PAGE 497
 (VOLUNTARY WITHDRAWAL FROM LAND COURT REGISTRATION SYSTEM
 ASSESSORS MAP 57 BLOCKS 4, 5, 6)



FOR REGISTRY USE

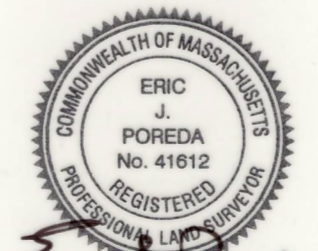
FOR CONTINUATION SEE SHEET 5

FOR CONTINUATION SEE SHEET 3

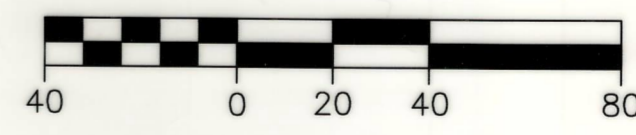


— A TRUE COPY —

Attest: *Matthew J. Crimley* Clerk.



Eric J. Poreda
S.21.10



COLER & COLANTONIO INC ENGINEERS AND SCIENTISTS 781-982-5400 Fax: 781-982-5490	DATE: MARCH 19, 2009
	COMP./DESIGN: BPR/WJD
	CHECK: NIL/EJP
	DRAWN: BPR/JPC/WJD
	SCALE: 1"=40'
101 Accord Park Drive Norwell, MA 02061-1685	JOB NO.: F:\Project\MA\Sharon\OldPostRoad\SharonLifestyleCenter\DWG\
	DWG NO.: AltPlan2008.dwg