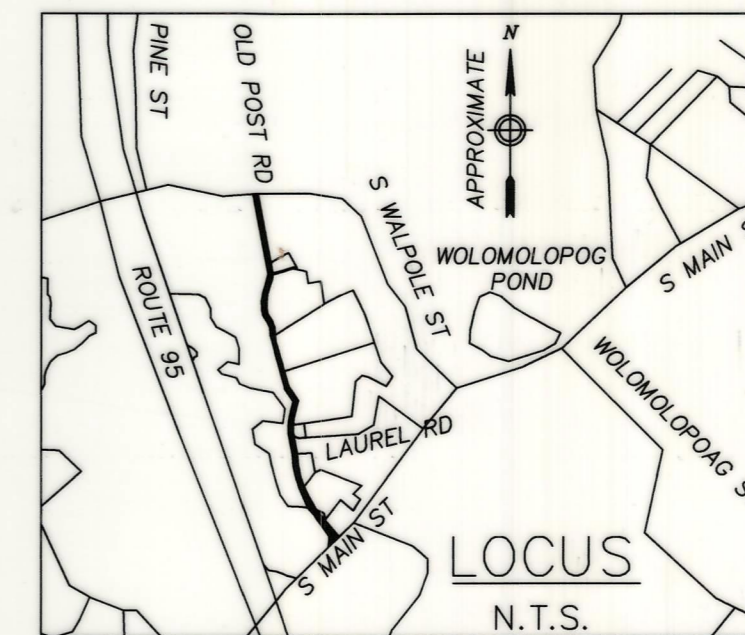
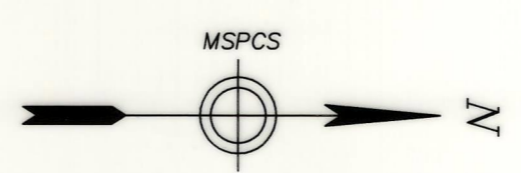


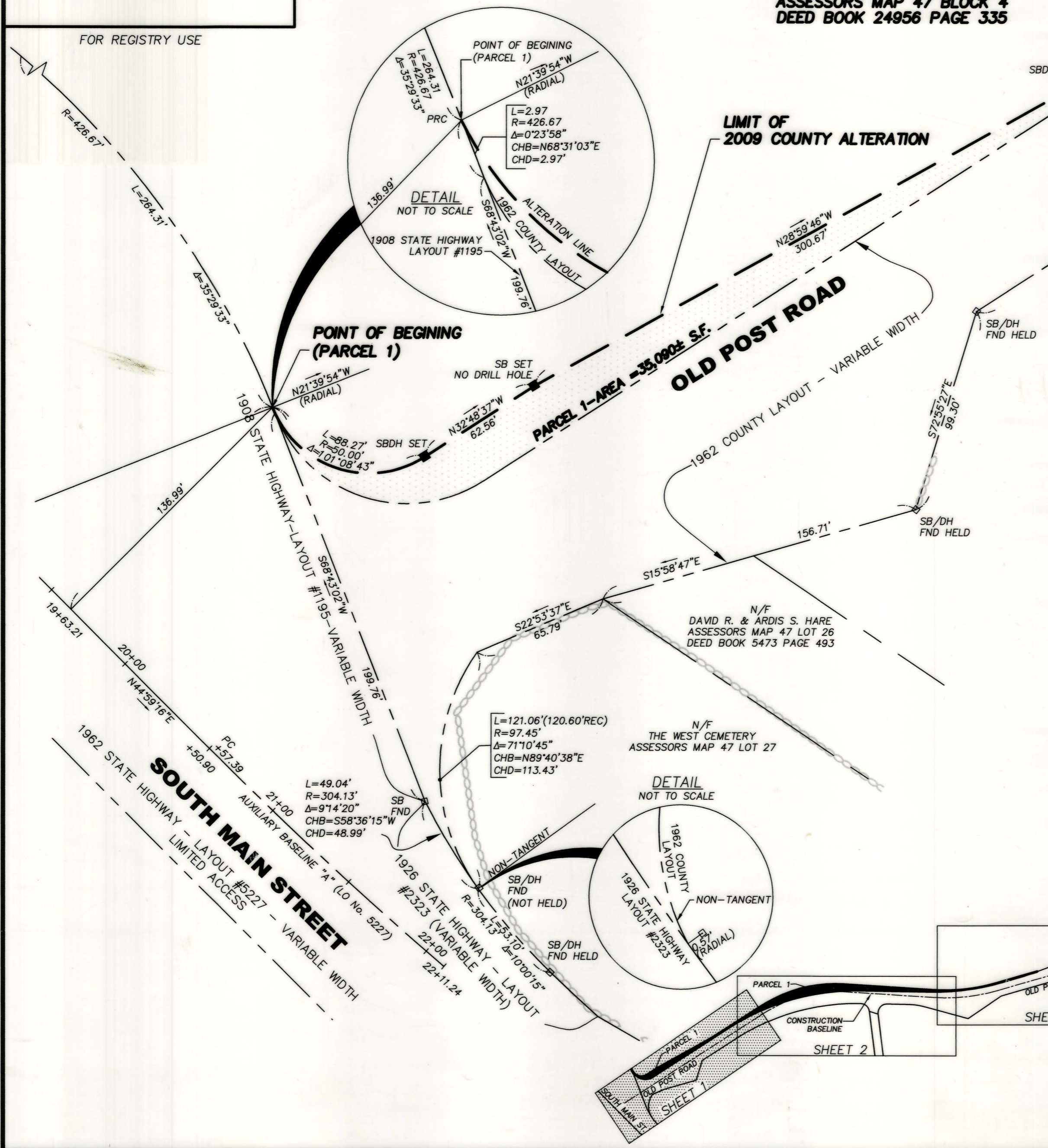
LEGEND

- LINE OF ALTERATION
- - - EXISTING RIGHT OF WAY LINE
- - - ABUTTER PROPERTY LINE
- SB/DH - STONE BOUND WITH DRILL HOLE
- SB/LPT - STONE BOUND WITH LEAD PLUG AND TACK
- - - FND - FOUND
- - STONE BOUND SET
- CHB - CHORD BEARING
- CHD - CHORD DISTANCE
- PCC - POINT OF COMPOUND CURVATURE
- PRC - POINT OF REVERSE CURVATURE



FOR CONTINUATION SEE SHEET 2

SHARON CFII L.P.
ASSESSORS MAP 47 BLOCK 4
DEED BOOK 24956 PAGE 335



OWNER OF RECORD SUMMARY

SHARON CFII L.P.
ASSESSORS MAP 47 BLOCKS 4, 4-3
PORTION OF BLOCKS 4-1 AND 4-2
DEED BOOK 24956, PAGE 335

ASSESSORS MAP 47 BLOCK 36
ASSESSORS MAP 57 BLOCKS 22 AND 24
DEED BOOK 25422, PAGE 564

ASSESSORS MAP 57 BLOCKS 4, 5, 6
DEED BOOK 25069, PAGE 463
DEED BOOK 26158, PAGE 497
(VOLUNTARY WITHDRAWAL FROM LAND COURT REGISTRATION SYSTEM
ASSESSORS MAP 57 BLOCKS 4, 5, 6)

I HEREBY CERTIFY THAT THIS PLAN WAS PREPARED IN CONFORMANCE WITH THE RULES AND REGULATIONS OF THE REGISTERS OF DEEDS OF THE COMMONWEALTH OF MASSACHUSETTS.

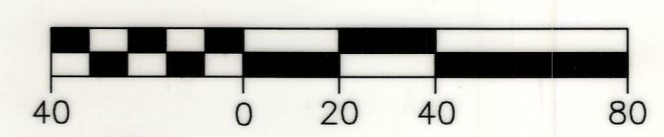
Eric J. Poreda
ERIC J. POREDA, PLS #41612 DATE: 5.21.10

A TRUE COPY
Kathleen J. Ginnity Clerk.

- GENERAL NOTES:
- THIS SURVEY IS COMPILED FROM AERIAL PHOTOGRAPHY AND SUPPLEMENTED WITH AN ON-THE-GROUND SURVEY PERFORMED BY COLER & COLANTONIO, INC., BETWEEN MARCH AND MAY 2007. STONE BOUNDS WERE SET ON OCTOBER 28, 2008.
 - PRIMARY GEODETIC SURVEY CONTROL WAS ESTABLISHED FROM AN ON-THE-GROUND SURVEY BY COLER & COLANTONIO, INC. USING THE GLOBAL POSITIONING SYSTEM (GPS) IN MARCH 2007. THE HORIZONTAL REFERENCED DATUM IS NAD83 BASED ON THE GRS 80 REFERENCE ELLIPSOID. THE GRID COORDINATES ARE BASED ON THE MASSACHUSETTS STATE PLANE COORDINATE SYSTEM OF 1983 (MAINLAND 2001).
 - UNLESS OTHERWISE NOTED, DEED AND PLAN REFERENCES ARE TO THE NORFOLK COUNTY REGISTRY OF DEEDS.
- PLAN REFERENCES:
PROPERTY LINE PLANS:
241 OF 1923; 331 OF 1923; 1090 OF 1951; 1420 OF 1954; 1557 OF 1954; 1026 OF 1955; 96 OF 1956; 1159 OF 1956; 842 OF 1957A; 842 OF 1957B; 323 OF 1959; 1359 OF 1960; 1477 OF 1960; 1072 OF 1961; 1282 OF 1961; 418 OF 1964; 1001 OF 1977; 623 OF 1993; LOC 22289C.
PLAN BOOK 579, PAGE 59
PLAN BOOK 582, PAGE 91-92 (ANR PLAN)
- ROAD LAYOUTS:
S.H.L.O. NO. 5227 (1962); S.H.L.O. NO. 1195 (1908); S.H.L.O. NO. 2323 (1926); PLAN OF WIDENING AND RELOCATION OF SOUTH WALPOLE STREET, DATED AUGUST 13, 1956; 355 OF 1959; PLAN OF RELOCATION OF A PART OF OLD POST ROAD, DATED NOVEMBER 7, 1951; 596 OF 1962; 323 OF 1959.

Plan showing the Alteration of a portion of
OLD POST ROAD, SHARON, MA
at its junction with SOUTH MAIN STREET as laid out by the NORFOLK COUNTY COMMISSIONERS on May 15, 1962 as made by the Norfolk County Commissioners by Return dated Aug 11 2010
Scale: 1 inch = 40 feet
ERIC J. POREDA, P.L.S.

Francis W. O'Brien CHAIRMAN



| | |
|--------------------------------------------------------------------------------------------------------|--------------------------------------------------------------------------------------------------|
| COLER & COLANTONIO INC ENGINEERS AND SCIENTISTS 781-982-5400 Fax: 781-982-5490 | DATE: MARCH 19, 2009 |
| | COMP./DESIGN: BPR/WJD |
| | CHECK: NIL/EJP |
| | DRAWN: BPR/JPC/WJD |
| | SCALE: 1" = 40' |
| 101 Accord Park Drive Norwell, MA 02061-1685 | JOB NO.: F:\Project\MA\Sharon\OldPostRoad\SharonLifestyleCenter\DWG\ DWG NO.: AltPlan2008.dwg |