

# Plan showing the Discontinuance of a portion of EAST STREET (now called WESTWOOD TERRACE) WESTWOOD, MA

between  
the northeasterly sideline of the Circumferential Highway  
(Route 128) as laid out on November 9, 1954  
by the Commonwealth of Massachusetts  
and a point about 350 feet northeasterly  
as made by the Norfolk County Commissioners  
by Return dated May 22, 2002  
Scale: 1 inch = 40 feet

Clayton T. Ryan, Jr., Asst. County Engineer/County Surveyor

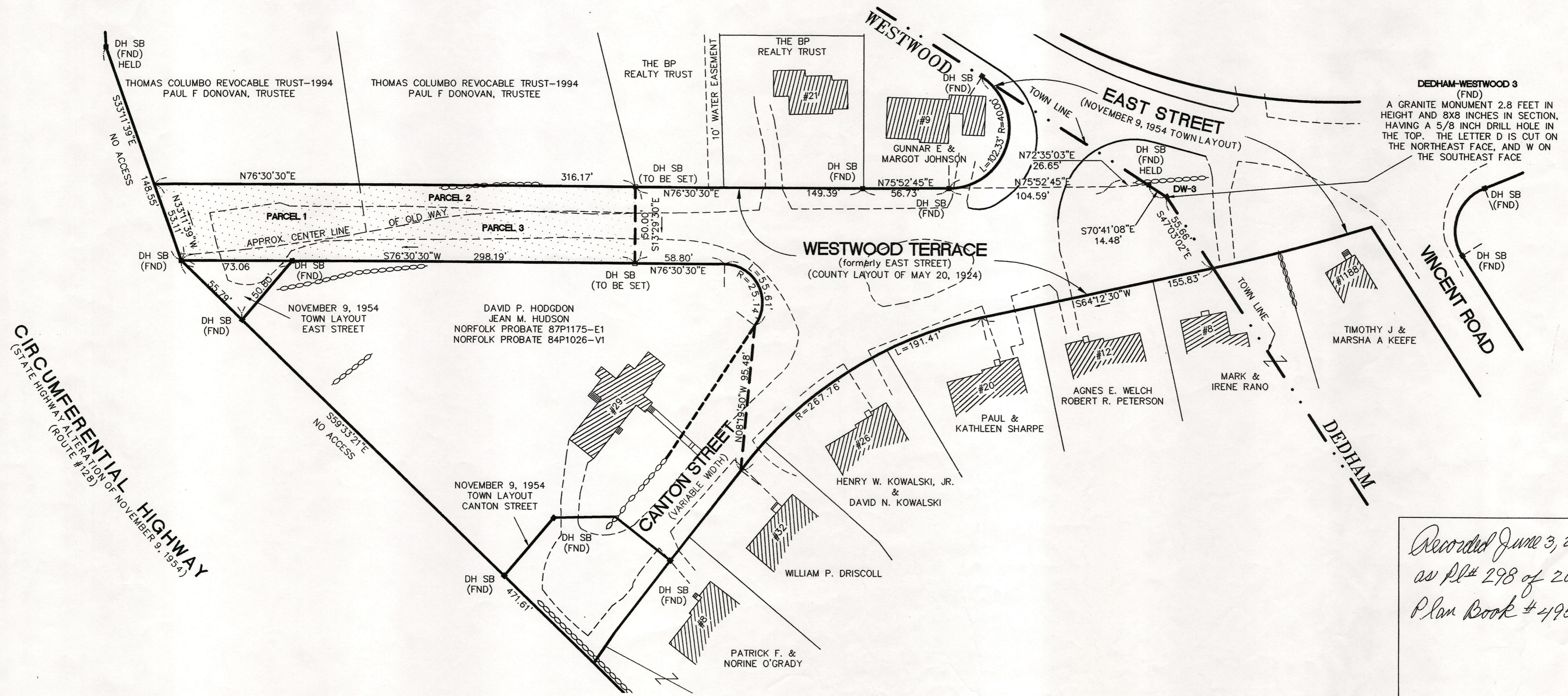
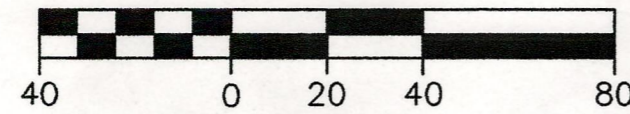
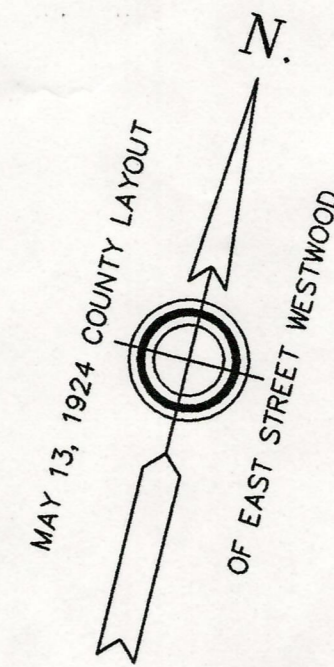
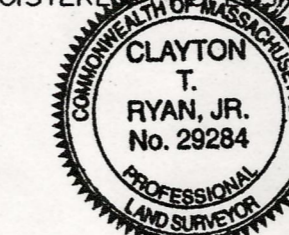
*Clayton T. Ryan, Jr.* CHAIRMAN

- A TRUE COPY -

Attest: *Brian G. Shaker* Reg. Clerk.

"I HEREBY CERTIFY THAT THIS PLAN  
WAS PREPARED IN CONFORMITY WITH THE  
RULES AND REGULATIONS OF THE REGISTERS  
OF DEEDS"

*Clayton T. Ryan, Jr.* DATE: *April 16, 2002*  
REGISTERED PROFESSIONAL LAND SURVEYOR



DEDHAM-WESTWOOD 3 (FND)  
A GRANITE MONUMENT 2.8 FEET IN HEIGHT AND 8X8 INCHES IN SECTION, HAVING A 5/8 INCH DRILL HOLE IN THE TOP. THE LETTER D IS CUT ON THE NORTHEAST FACE, AND W ON THE SOUTHEAST FACE

*Recorded June 3, 2002  
as PL# 298 of 2002  
Plan Book # 495*