

Plan showing the Relocation
of
WASHINGTON STREET,
CANTON

— A TRUE COPY —

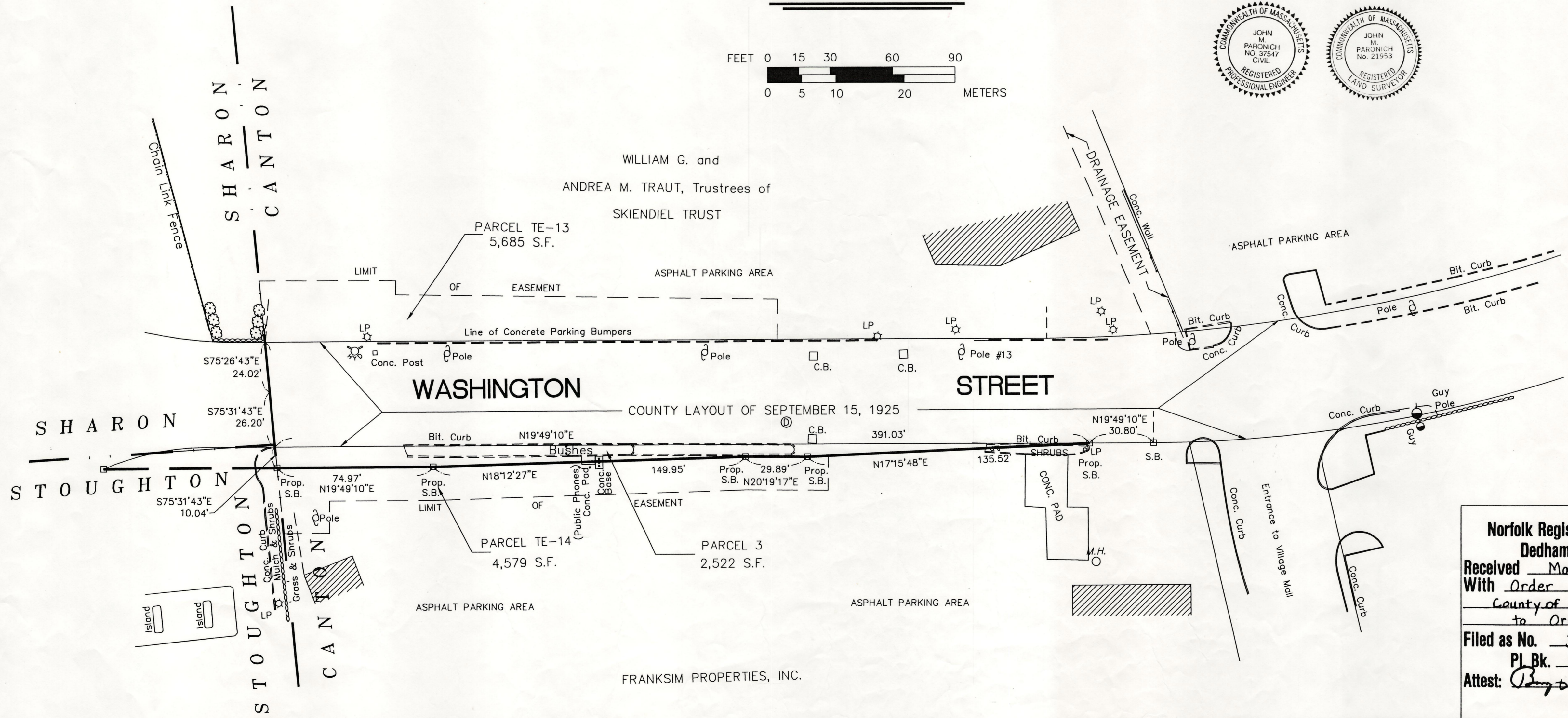
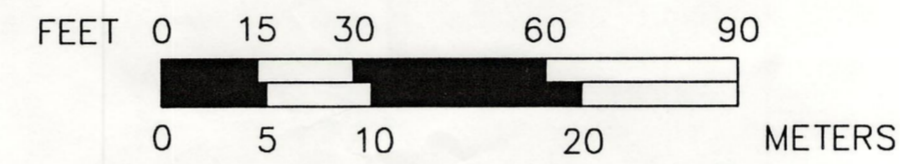
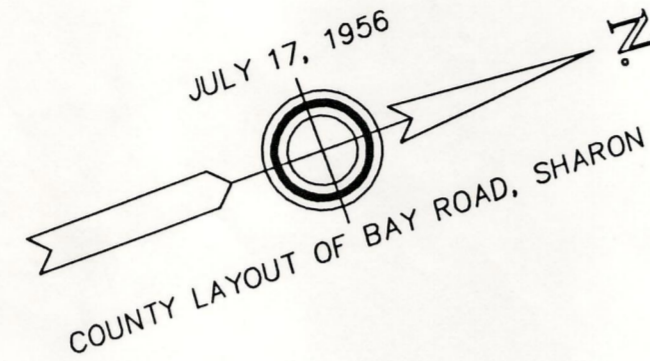
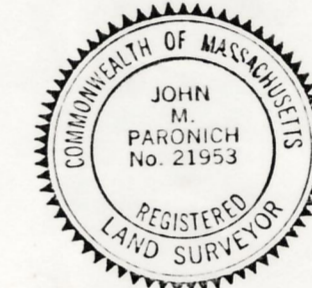
Attest: May 21 1997 Clerk.

between
THE SHARON TOWN LINE and a point about 400 FEET NORTHERLY
as made by the Norfolk County Commissioners
by Return dated MAY 21, 1997
Scale: 1 inch = 30 feet
John M. Paronich, County Engineer

William P. Donnell CHAIRMAN

"I HEREBY CERTIFY THAT THIS PLAN
WAS PREPARED IN CONFORMITY WITH THE
RULES AND REGULATIONS OF THE REGISTERS
OF DEEDS."

John M. Paronich DATE: 5/21/97
REG. PROFESSIONAL LAND SURVEYOR



Norfolk Registry of Deeds
Dedham, Mass.
Received May 23 19 97
With Order
County of Norfolk
to Order
Filed as No. 311 19 97
Pl. Bk. 447
Attest: [Signature]
Register