

Plan showing the Discontinuance
of a portion of
MAYOR THOMAS J. McGRATH HIGHWAY, QUINCY

between
WASHINGTON STREET AND A POINT 160 FEET NORTHERLY

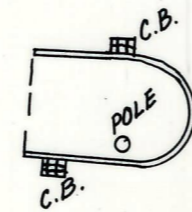
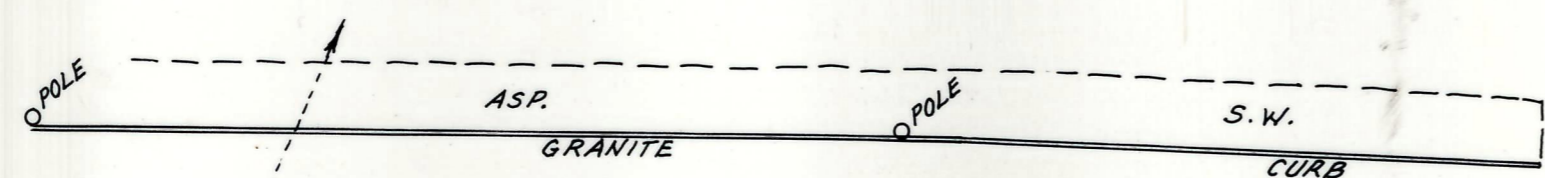
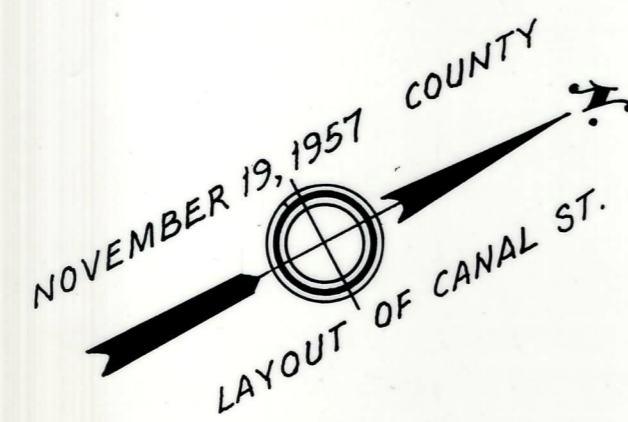
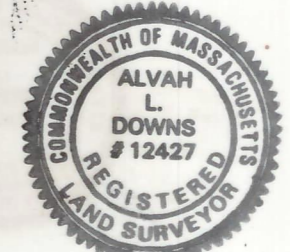
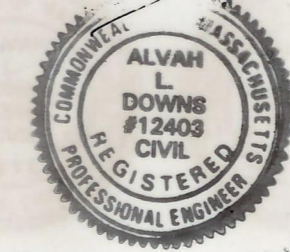
as made by the Norfolk County Commissioners
by Return dated August 19, 1987

Scale: 1 inch = 20 feet
Alvah L. Downs, County Engineer.

James Collins CHAIRMAN

"I CERTIFY THAT THIS PLAN CONFORMS
WITH THE RULES AND REGULATIONS OF
THE REGISTERS OF DEEDS."

Alvah L. Downs August 19, 1987



MAYOR THOMAS J. McGRATH HIGHWAY
(FORMERLY CANAL STREET)

