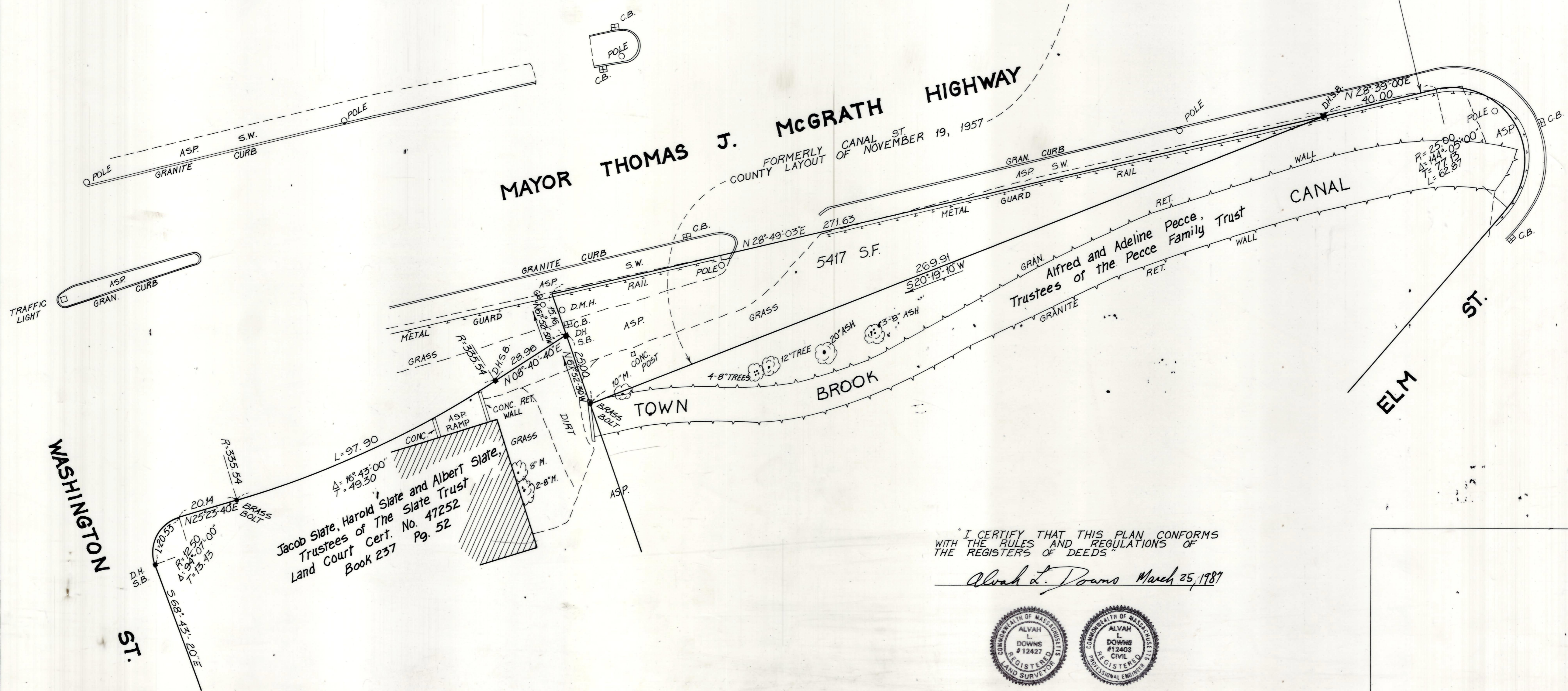
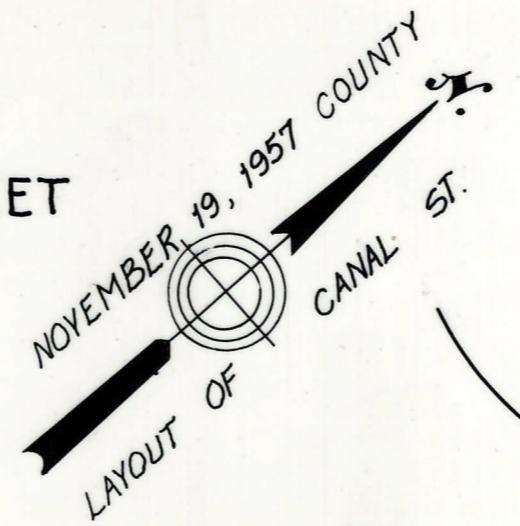
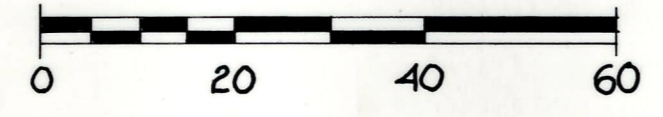


Plan showing the Discontinuance of a portion of MAYOR THOMAS J. McGRATH HIGHWAY, QUINCY

A POINT ABOUT 160 FEET NORTHERLY OF WASHINGTON STREET AND ELM STREET
as made by the Norfolk County Commissioners
by Return dated March 25, 1987

Scale: 1 inch = 20 feet
Alvah L. Downs County Engineer
James J. Collins CHAIRMAN



I CERTIFY THAT THIS PLAN CONFORMS
WITH THE RULES AND REGULATIONS OF
THE REGISTERS OF DEEDS

Alvah L. Downs March 25, 1987

