

Plan and Profile
showing Alteration of Railroad Crossing
on

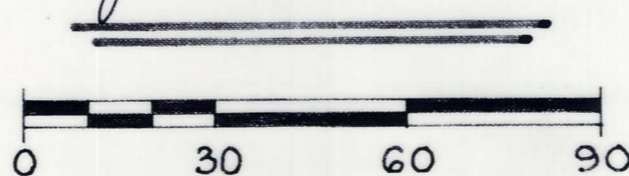
DEPOT STREET, BELLINGHAM

as made by the Norfolk County Commissioners
by Decision dated May 14, 1986

Horizontal Scale: 1 inch = 30 feet Vertical Scale: 1 inch = 6 feet

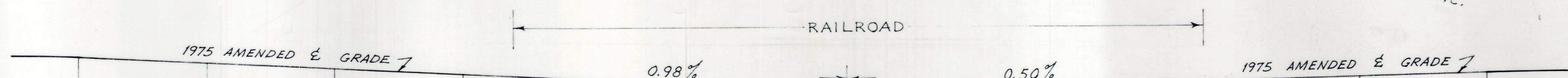
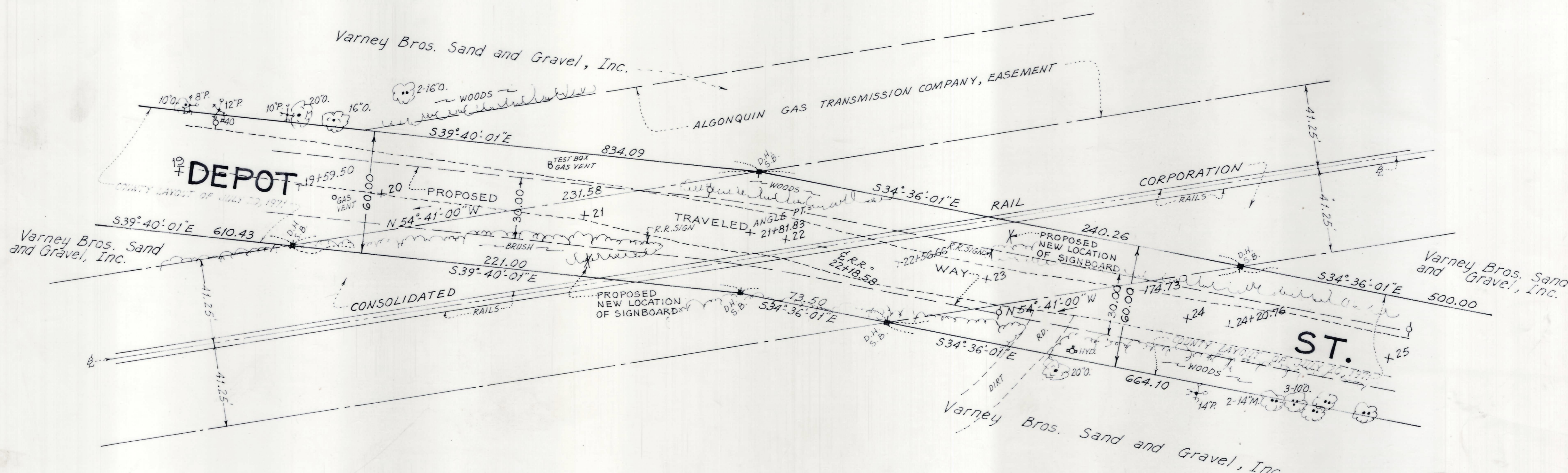
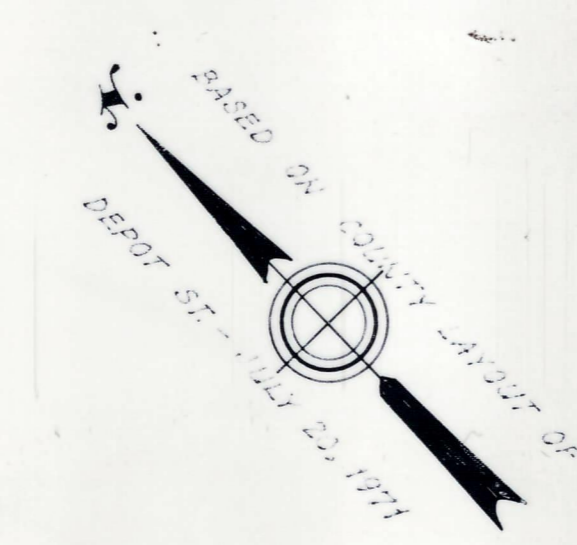
Alvah Downs, County Engineer

James Collins CHAIRMAN



"I certify that this plan conforms
with the Rules and Regulations
of the Registers of Deeds."

Alvah Downs May 14, 1986



ELEVATIONS BASED ON NATIONAL GEODETIC VERTICAL DATUM OF 1929.

Station	Elevation
19	255.94
20	255.45
21	254.96
22	254.47
23	253.98
24	253.49
25	253.00
26	253.25
27	253.50
28	253.75
29	254.00
30	254.25

B.M. Large vertical spike in 22" Oak. Sta. 17+52; 74 feet left. Elev. 257.57

B.M. Large vertical spike in 2-14" Oaks. Sta. 23+93.5; 65 feet right. Elev. 253.96