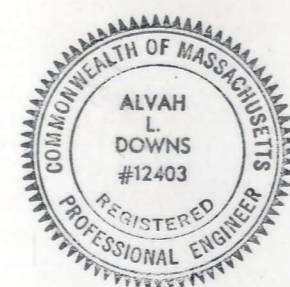
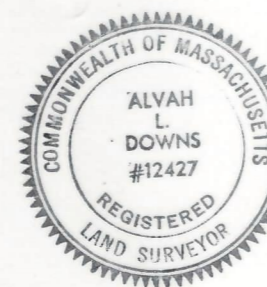


Plan and Profile  
showing the Relocation and Widening  
of  
**FARM STREET, MEDFIELD**

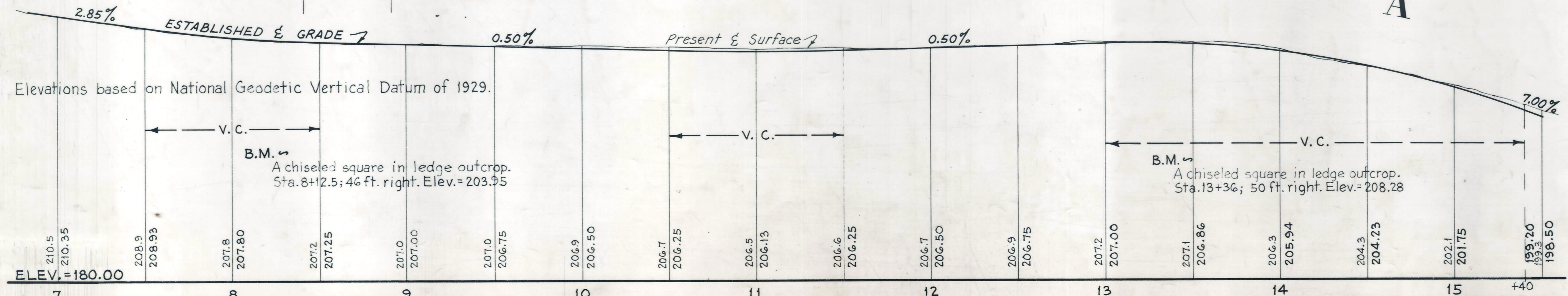
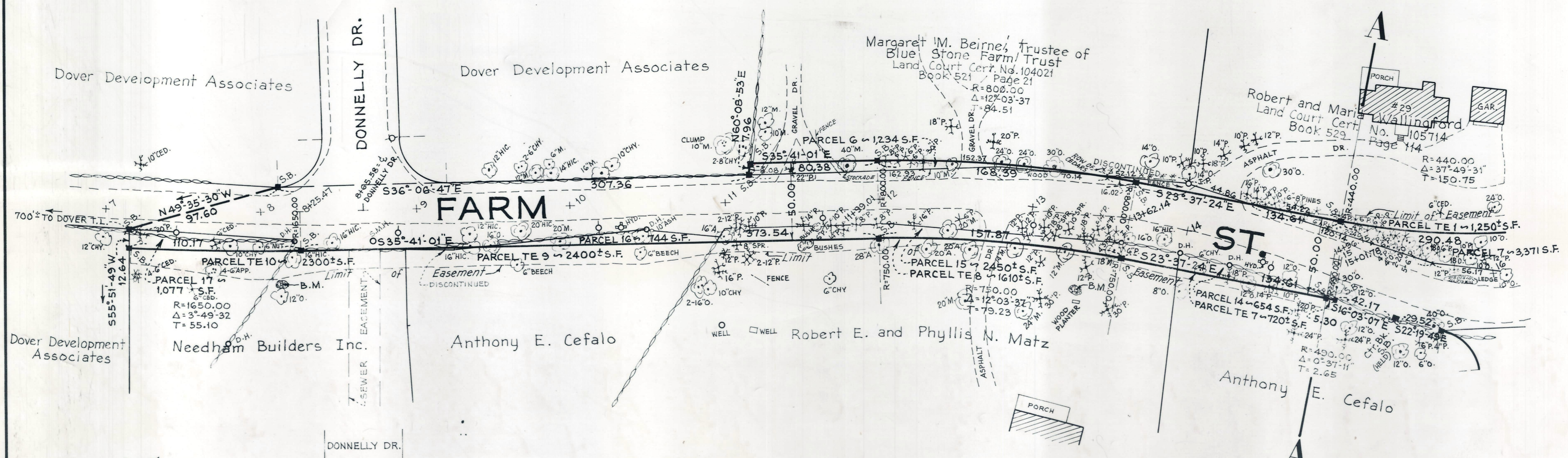
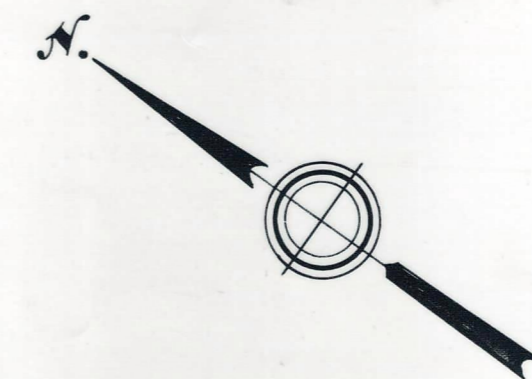
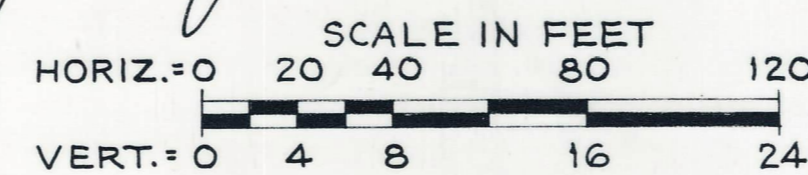
between  
**DONNELLY DRIVE AND NORTH STREET**  
as made by the Norfolk County Commissioners  
by Return dated December 1, 1982  
Horizontal Scale: 1 inch = 40 feet  
Vertical Scale: 1 inch = 8 feet  
Alvah L. Downs, County Engineer

"I CERTIFY THAT THIS PLAN CONFORMS  
WITH THE RULES AND REGULATIONS OF THE  
REGISTERS OF DEEDS."

*Alvah L. Downs*



*James Collins* CHAIRMAN



Recorded in Plan Bk 300 636-1  
as # 933 A+B of 1982  
Taking: 6089-221  
12/13/84  
EASEMENT