

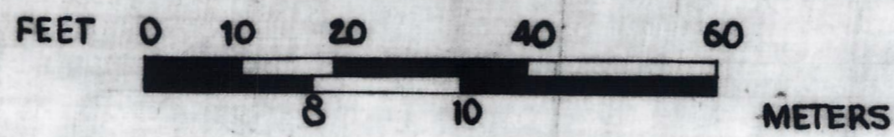
Plan showing the Relocation and Widening of **MAIN STREET, MEDFIELD**

between
NORTH MEADOW ROAD AND THE RAILROAD

as made by the Norfolk County Commissioners
by Return dated June 25, 1980

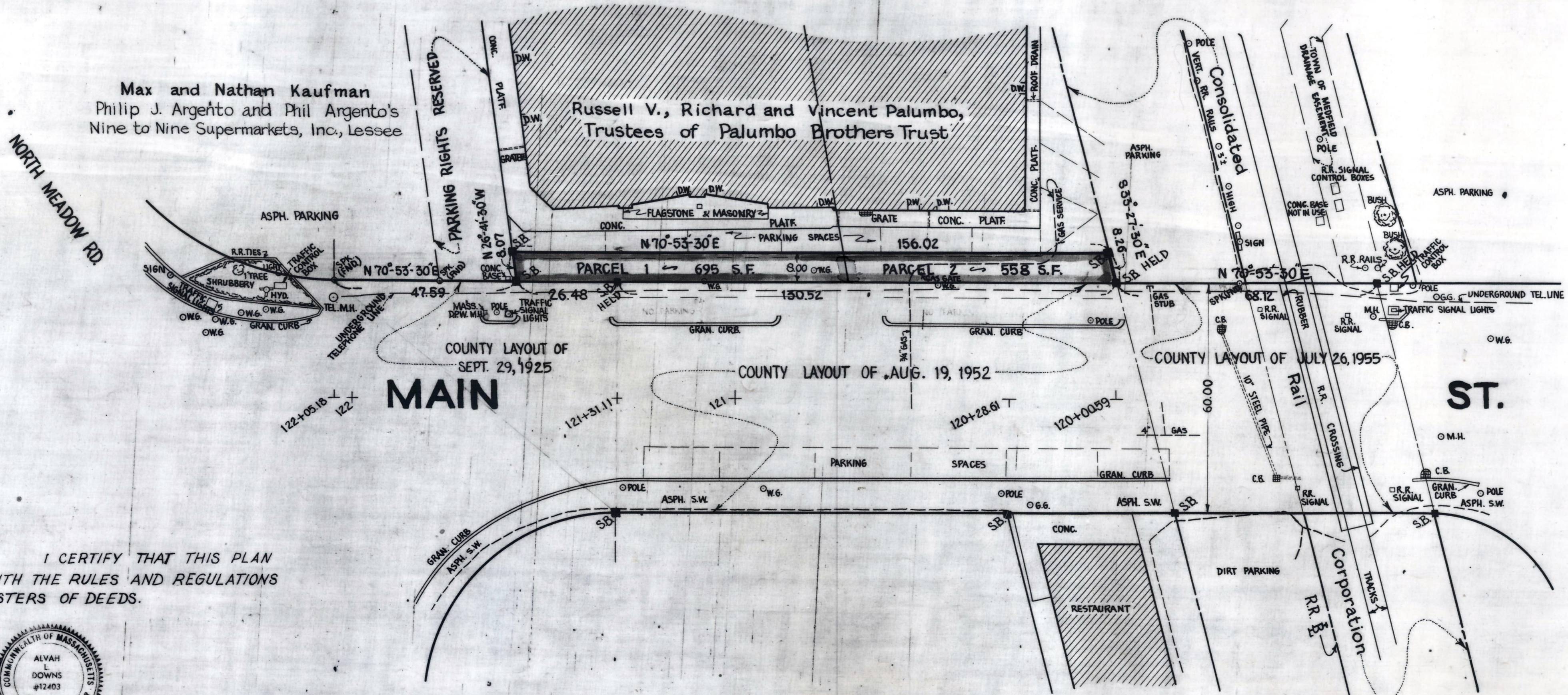
Scale 1 inch = 20 feet
Alvah L. Downs, County Engineer

James J. Collins CHAIRMAN



Max and Nathan Kaufman
Philip J. Argento and Phil Argento's
Nine to Nine Supermarkets, Inc., Lessee

Russell V., Richard and Vincent Palumbo,
Trustees of Palumbo Brothers Trust



I CERTIFY THAT THIS PLAN
CONFORMS WITH THE RULES AND REGULATIONS
OF THE REGISTERS OF DEEDS.



Alvah L. Downs