

I CERTIFY THAT THIS PLAN  
CONFORMS WITH THE RULES AND REGULATIONS  
OF THE REGISTERS OF DEEDS.

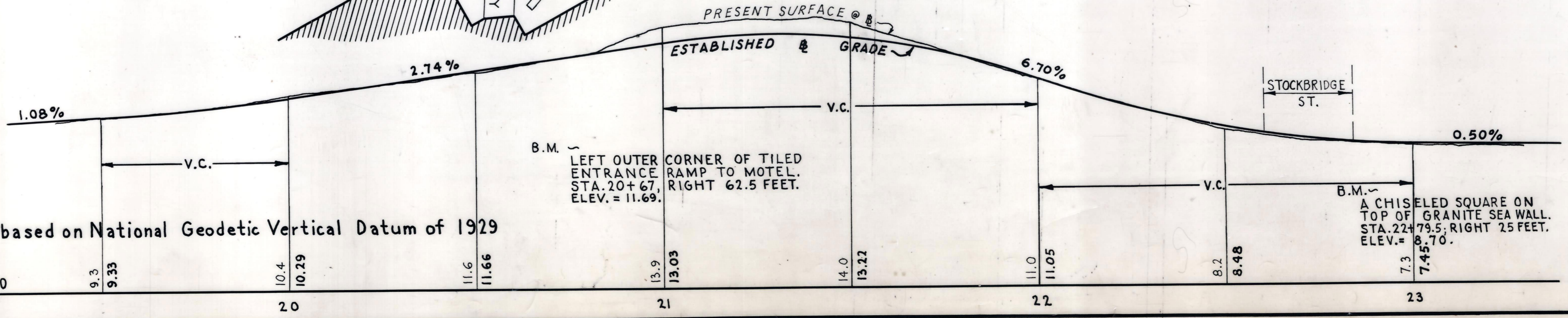
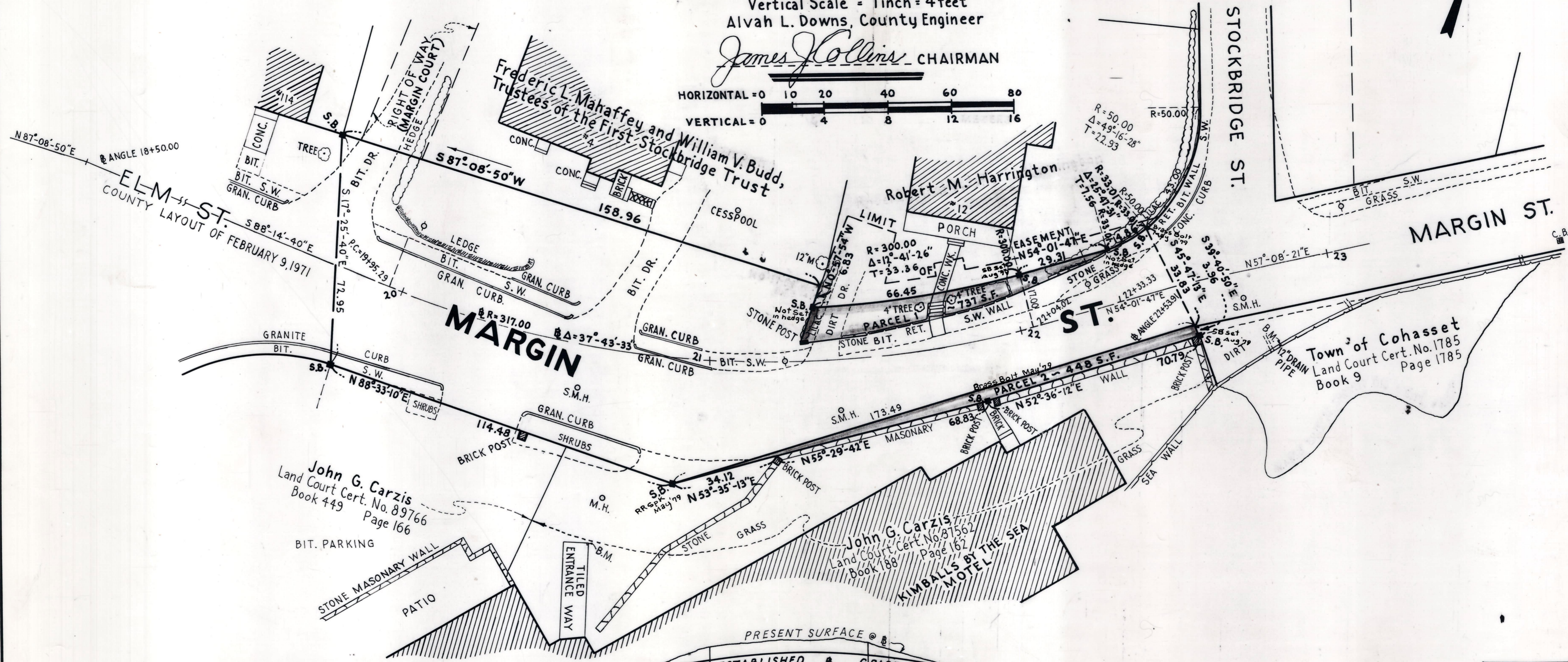


*Alvah L. Downs*

# Plan and Profile Showing the Relocation and Widening of **MARGIN STREET, COHASSET** between ELM STREET AND STOCKBRIDGE STREET

as made by the Norfolk County Commissioners  
by Return dated December 6, 1978  
Horizontal Scale = 1 inch = 20 feet  
Vertical Scale = 1 inch = 4 feet  
Alvah L. Downs, County Engineer

*James Collins* CHAIRMAN



Elevation based on National Geodetic Vertical Datum of 1929