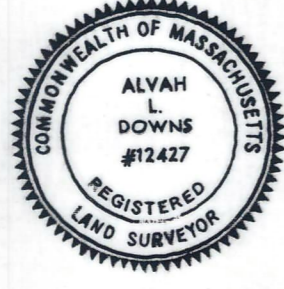


I CERTIFY THAT THIS PLAN  
CONFORMS WITH THE RULES AND REGULATIONS  
OF THE REGISTERS OF DEEDS.

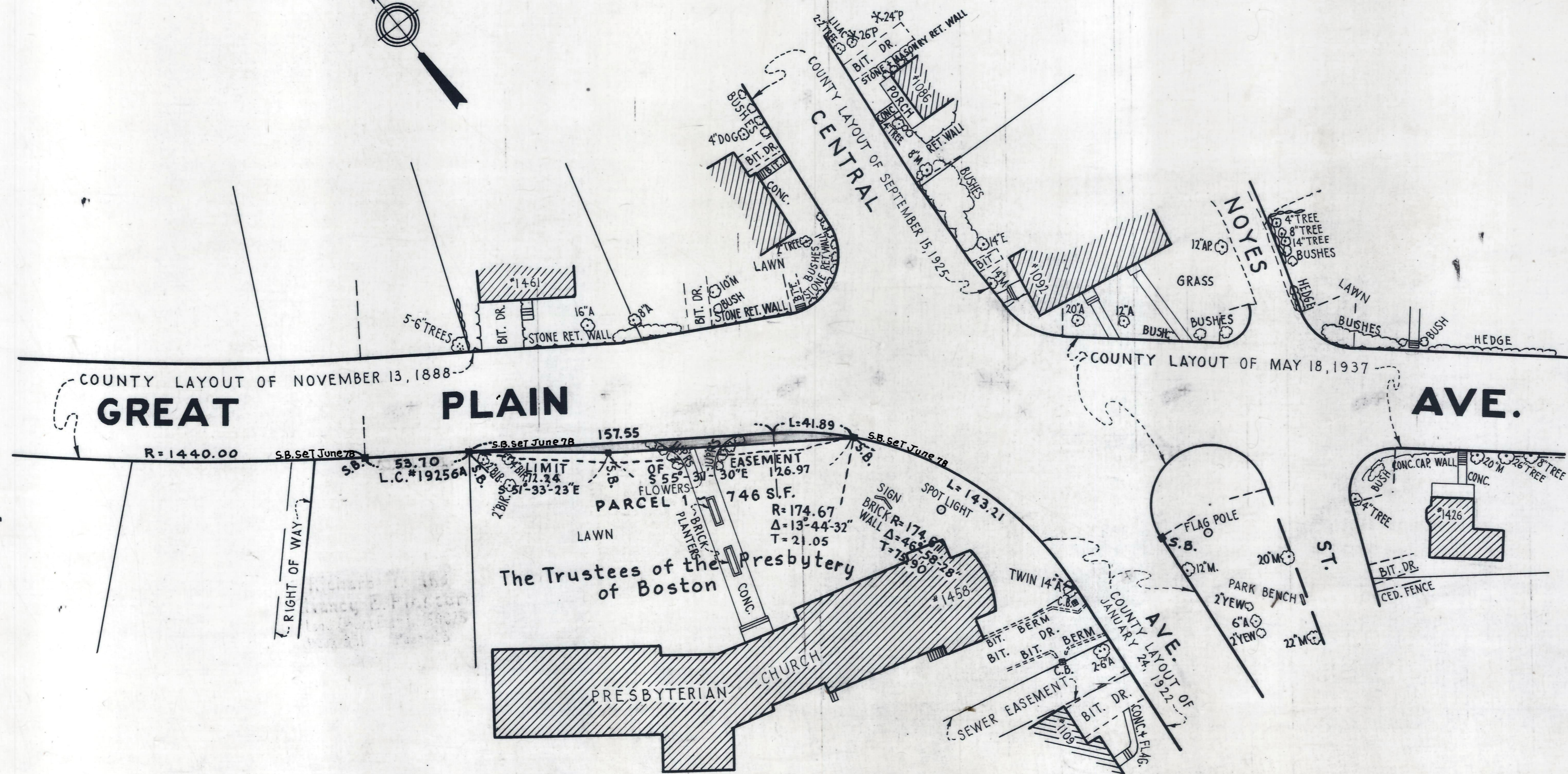
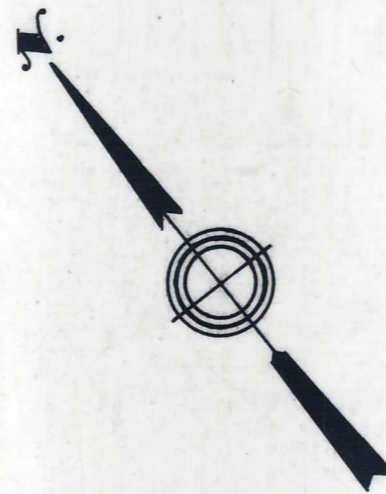
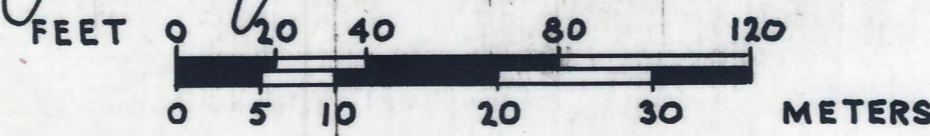


*Alvah L. Downs*

# Plan showing the Relocation and Widening of GREAT PLAIN AVENUE, NEEDHAM

between  
A POINT ABOUT 250 FEET WESTERLY OF  
CENTRAL AVENUE AND CENTRAL AVENUE  
as made by the Norfolk County Commissioners  
by Return dated September 14, 1977  
Scale: 1 inch = 40 feet  
Alvah L. Downs, County Engineer

*James Collins* CHAIRMAN



OFFICE COPY

618

Received in Registry 5385-117  
September 22, 1977  
Plan Book 262 No. 748 of 1977