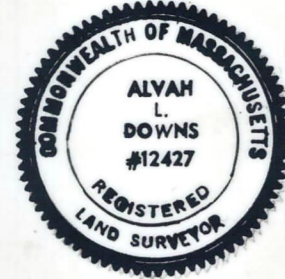
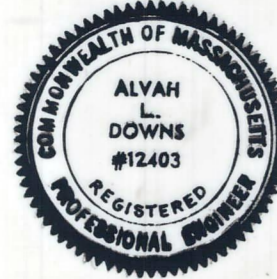


I CERTIFY THAT THIS PLAN
CONFORMS WITH THE RULES AND REGULATIONS
OF THE REGISTERS OF DEEDS.

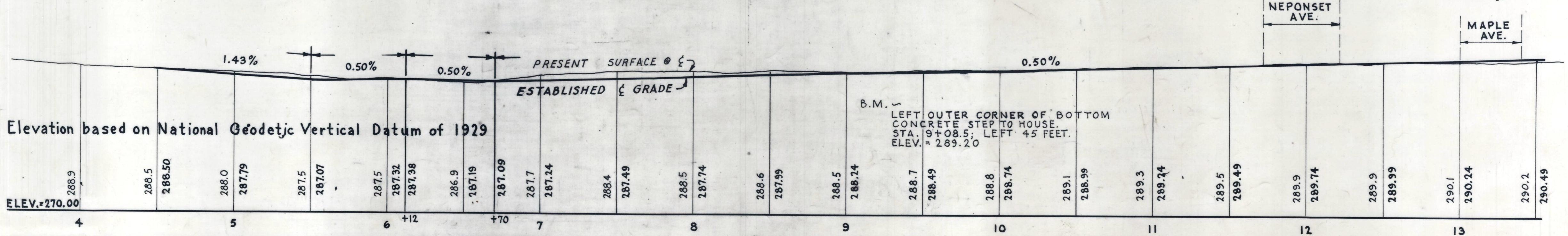
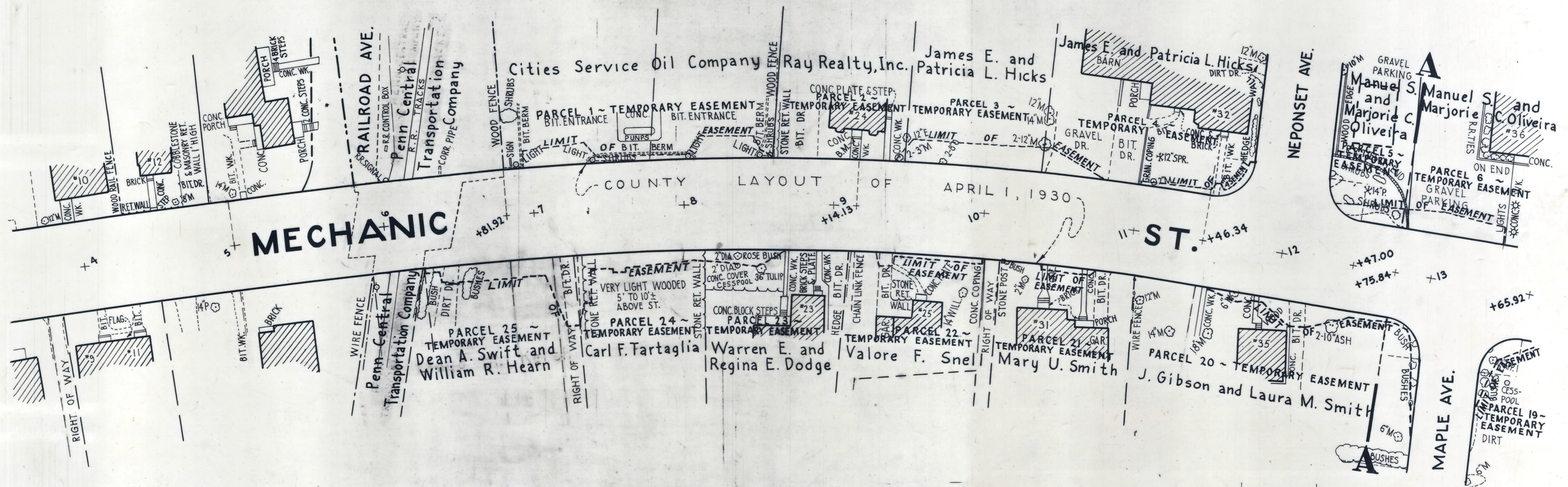
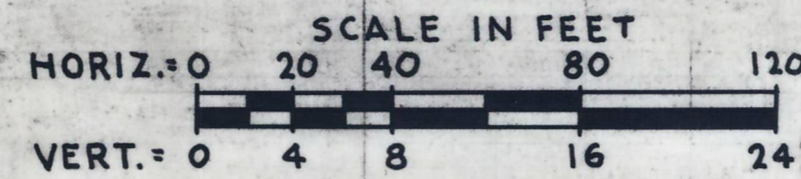


Alvah L. Downs

Plan and Profile showing the Relocation of **MECHANIC STREET, FOXBOROUGH**

between
RAILROAD AVENUE AND PLEASANT STREET
as made by the Norfolk County Commissioners
by Return dated, May 4, 1977
Horizontal Scale: 1 inch = 40 feet
Vertical Scale: 1 inch = 8 feet
Alvah L. Downs, County Engineer

James Collins CHAIRMAN



Elevation based on National Geodetic Vertical Datum of 1929

B.M. - LEFT OUTER CORNER OF BOTTOM CONCRETE STEP TO HOUSE. STA. 9+08.5; LEFT 45 FEET. ELEV. = 289.20