

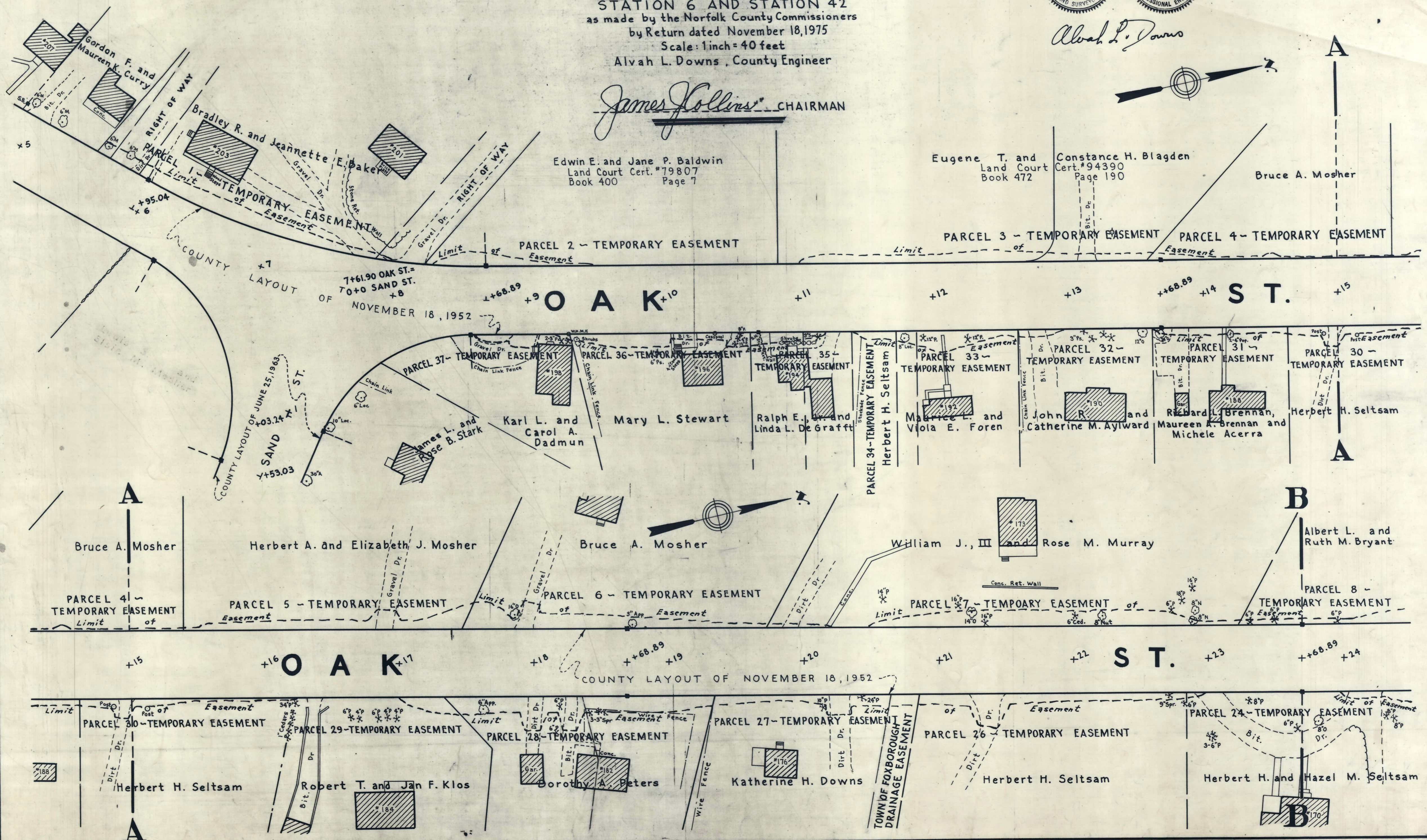
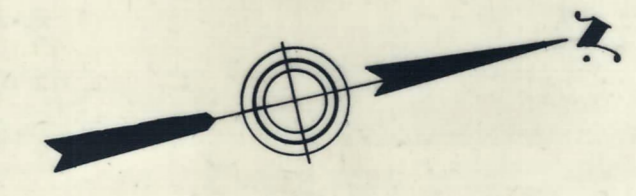
Plan showing Easement takings on **OAK STREET, FOXBOROUGH**

between
STATION 6 AND STATION 42
as made by the Norfolk County Commissioners
by Return dated November 18, 1975
Scale: 1 inch = 40 feet
Alvah L. Downs, County Engineer



Alvah L. Downs

James Collins CHAIRMAN



OFFICE COPY

RECEIVED IN REGISTRY 5183 - 731
Dec. 5, 1975
PLAN BOOK 251 PLAN 902 of 1975