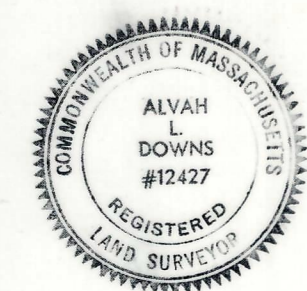


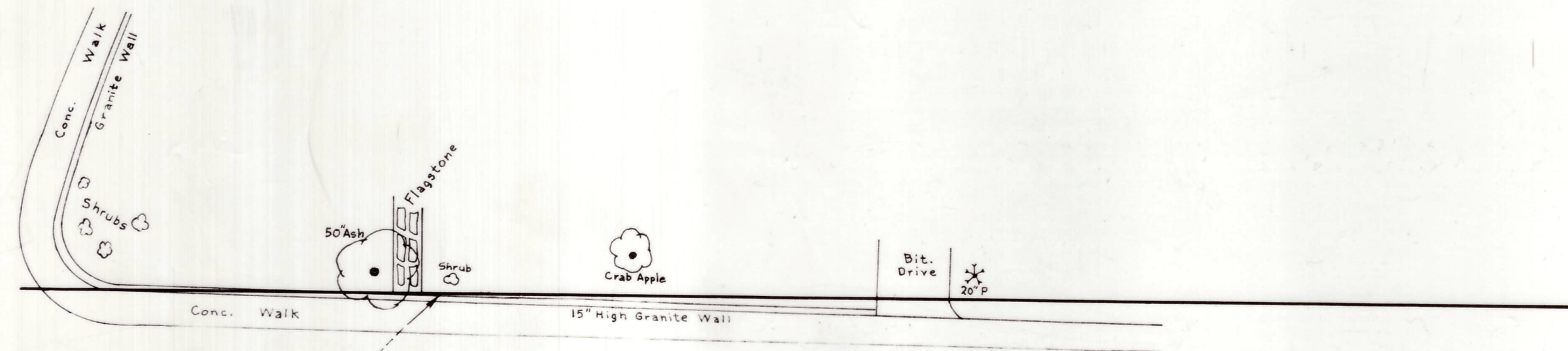
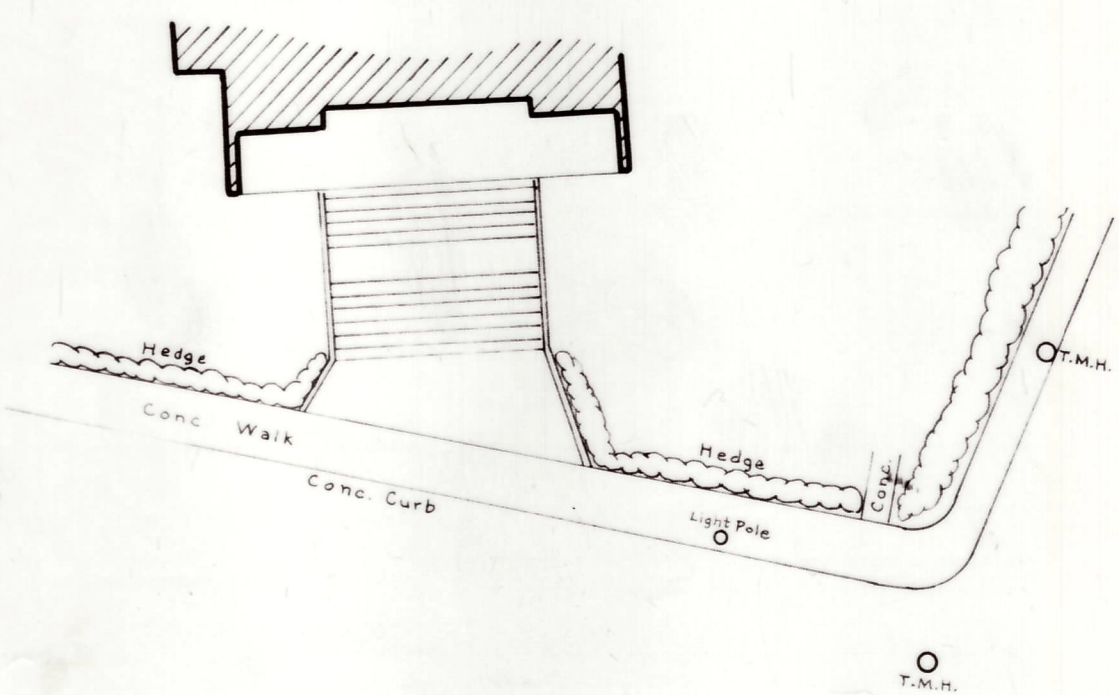
Plan  
showing the Relocation and Widening  
of  
**PLEASANT STREET, FRANKLIN**  
at

ITS INTERSECTION WITH MAIN STREET  
as made by the Norfolk County Commissioners  
by Return dated September 16, 1975  
Scale: 1 inch = 20 feet  
Alvah L. Downs, County Engineer



*James Collins* CHAIRMAN

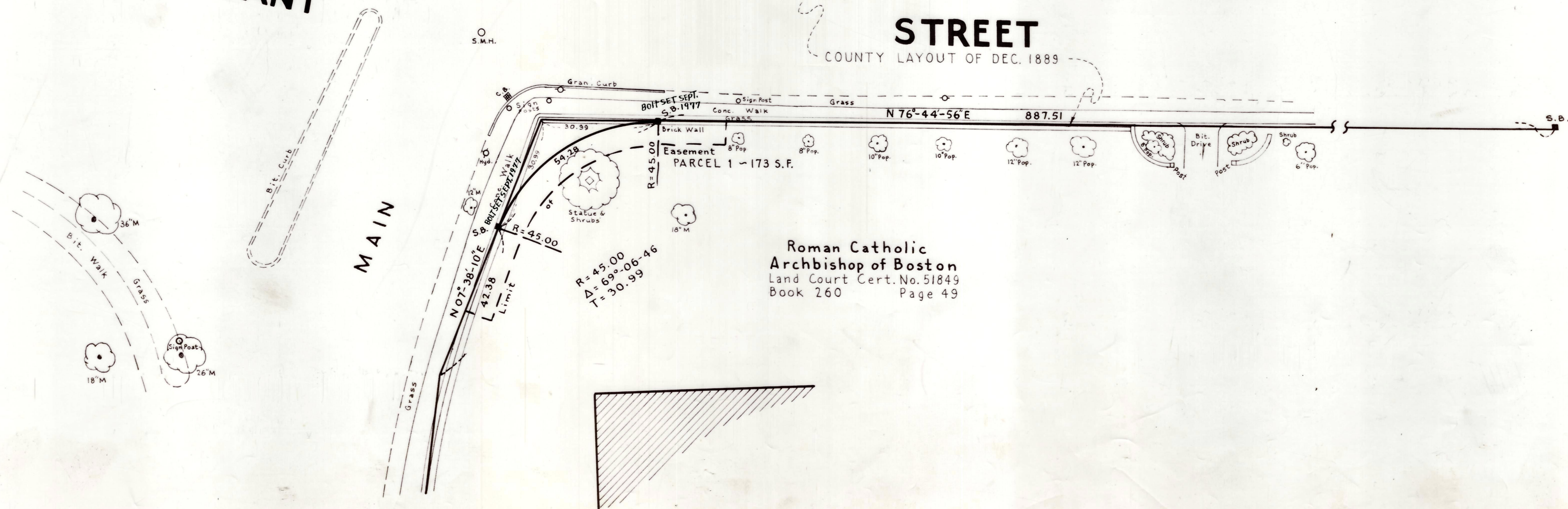
*Alvah L. Downs*



**PLEASANT**

**STREET**

COUNTY LAYOUT OF DEC. 1889



OFFICE COPY

RECORDED IN LAND COURT - OCT. 3, 1975  
AS DOCUMENT NO. 354259  
WITH CERTIFICATE NO. 51849