

*Alvah L. Downs*

# Plan showing the Discontinuance of **NORTH STREET, BRAINTREE**

between  
GRANITE STREET AND ROCKDALE STREET

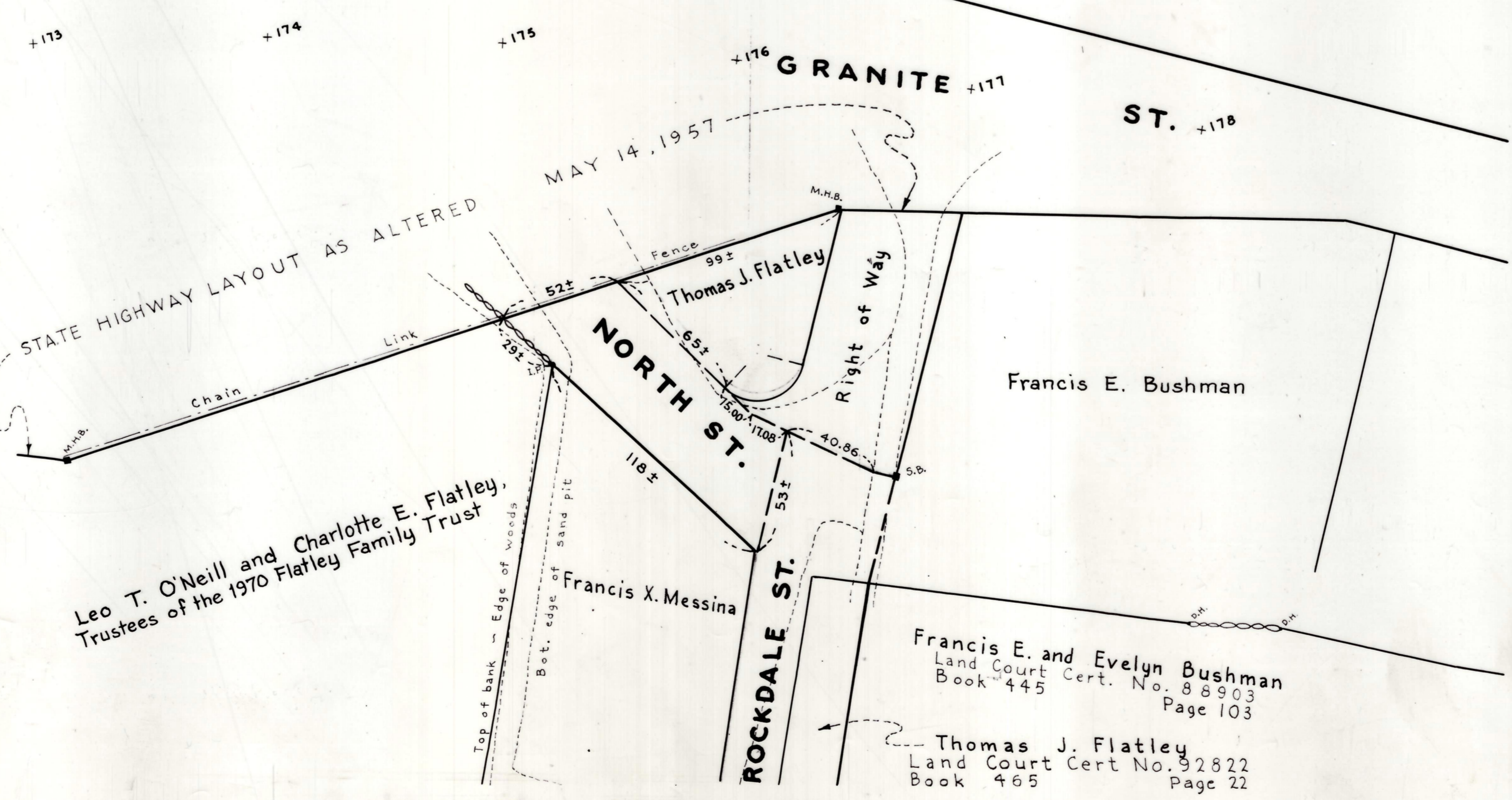
as made by the Norfolk County Commissioners

by Return dated February 4, 1975

Scale : 1 inch = 40 feet

Alvah L. Downs, County Engineer

*James Collins* CHAIRMAN



OFFICE COPY

605

Received in Registry 5107-97  
Feb. 5, 1975  
Plan Book 248-No. 68 of 1975

1/2 o.s.