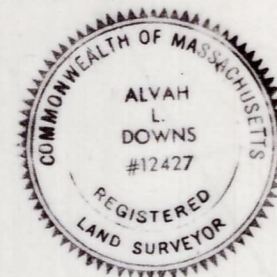


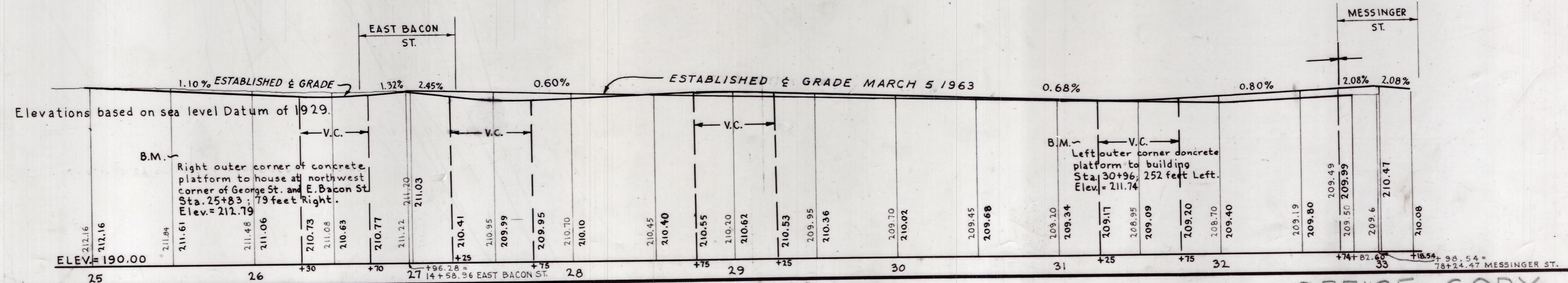
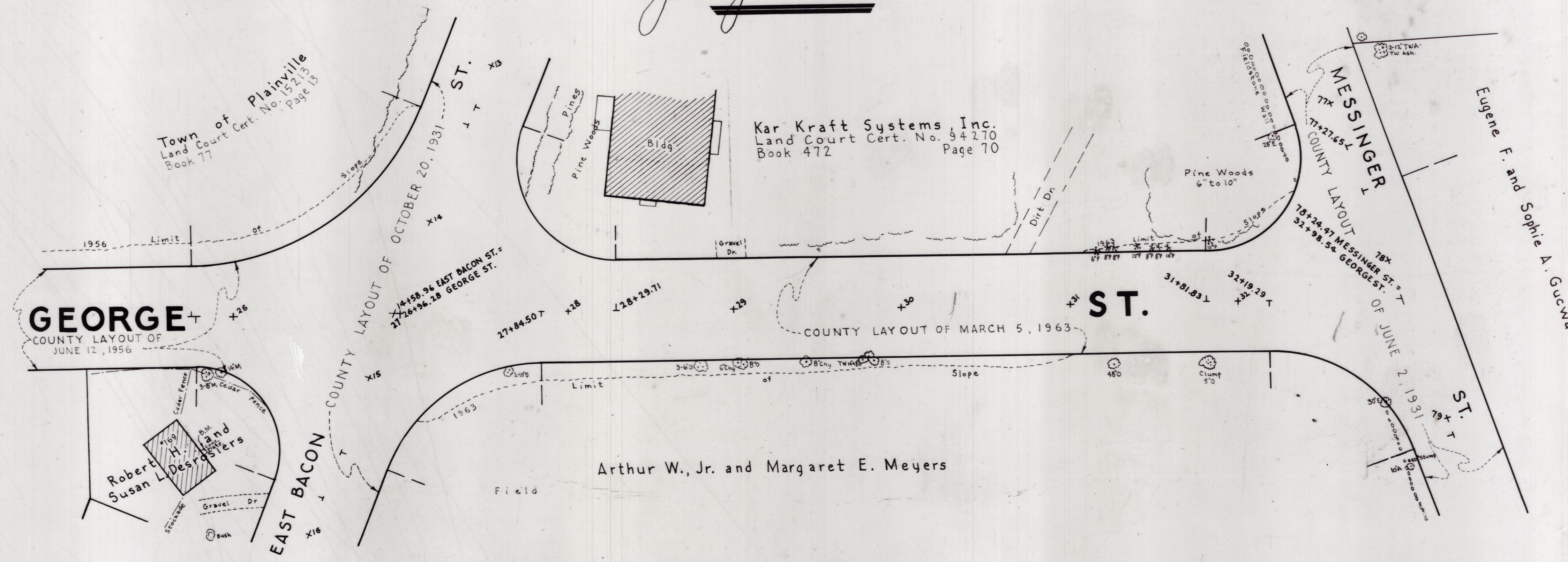
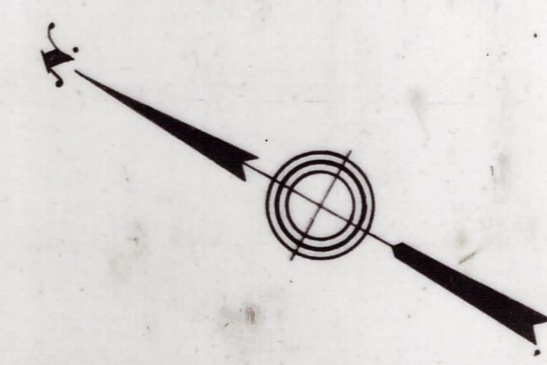
Plan and Profile showing the Relocation of GEORGE STREET, PLAINVILLE

between
EAST BACON STREET AND MESSINGER STREET
as made by the Norfolk County Commissioners
by Return dated January 21, 1975
Horizontal Scale: 1 inch = 40 feet
Vertical Scale: 1 inch = 8 feet
Alvah L. Downs, County Engineer



Alvah L. Downs

James Collins CHAIRMAN



OFFICE COPY
Received in Registry 5106-182
Jan. 31, 1975
Plan Book No. 248 - No. 55 of 1975 Easement 1.5, 1/4