

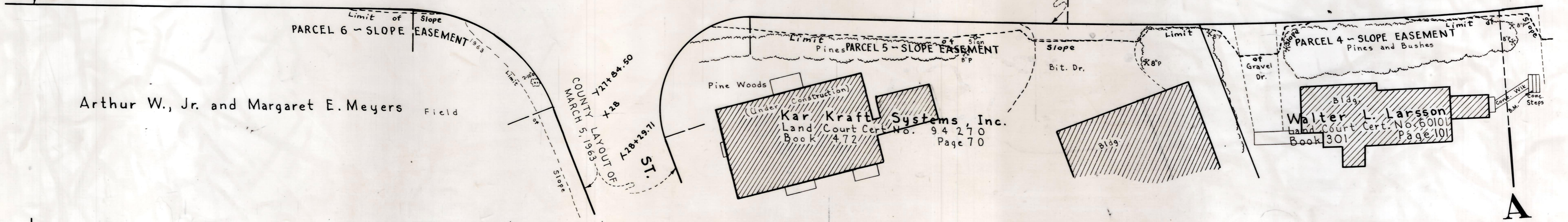
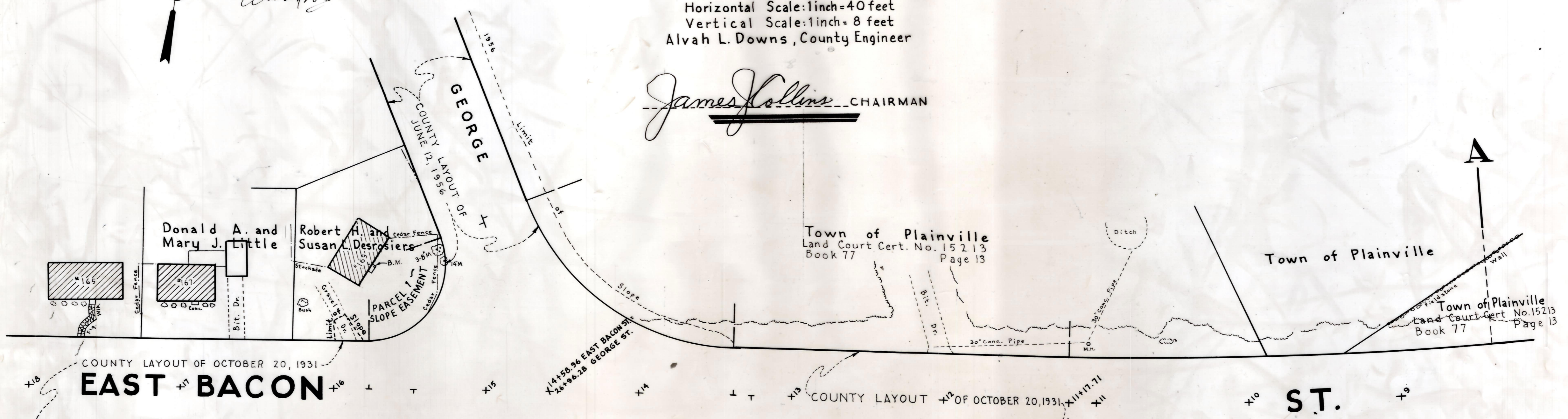
EAST BACON STREET, PLAINVILLE

Plan and Profile
showing the Relocation of
GEORGE STREET AND MESSINGER STREET
as made by the Norfolk County Commissioners
by Return dated February 4, 1975
Horizontal Scale: 1 inch = 40 feet
Vertical Scale: 1 inch = 8 feet
Alvah L. Downs, County Engineer



Alvah L. Downs

James Collins CHAIRMAN



Elevations based on sea level Datum of 1929.

214.29	213.80	213.79	213.36	213.33	212.80	212.87	212.22	212.41	211.89	211.95	211.49	211.03	210.60	210.57	210.07	210.11	209.65	209.65	209.25	209.19	208.82	208.73	208.33	208.37	208.18	207.89	207.89	207.85	207.78	207.95	207.94	208.15	208.23	208.63	208.52	208.91	208.81		
18	17	17	17	17	16	16	16	16	15	15	15	14	14	14	13	13	13	13	13	12	12	12	11	11	11	11	11	10	10	10	10	9	9	9	9	8	8	8	8

B.M. ~ Right outer corner concrete platform to house. Sta. 15+73; 74 feet Right. Elev. = 212.79
 B.M. ~ Left outer corner of concrete platform at concrete steps. Sta. 8+21; 85.5 feet Left. Elev. = 212.18