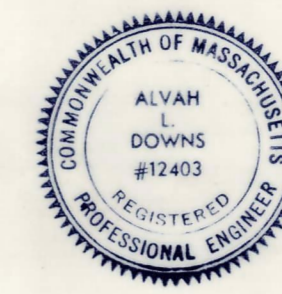
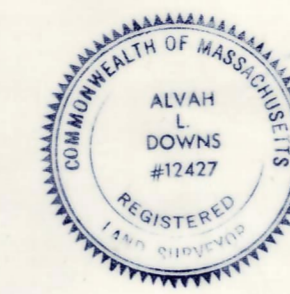
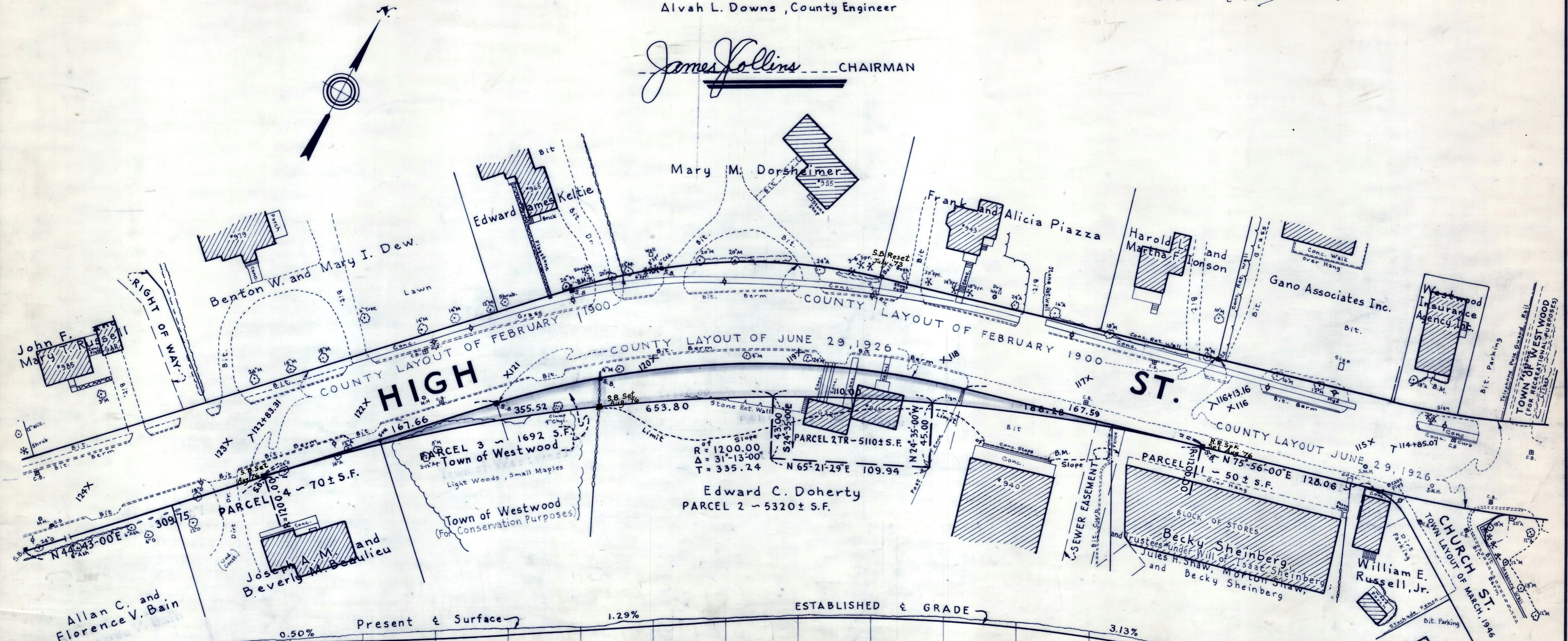


Plan and Profile
showing the Relocation and Widening
of
HIGH STREET, WESTWOOD
between
A POINT ABOUT 800 FEET WESTERLY OF CHURCH ST. AND CHURCH ST.
as made by the Norfolk County Commissioners
by Return dated November 19, 1974
Horizontal Scale: 1 inch = 40 feet
Vertical Scale: 1 inch = 8 feet
Alvah L. Downs, County Engineer



Alvah L. Downs

James Collins CHAIRMAN



Elevations based on sea level Datum of 1929.

Station	Elevation	Notes
124	209.3	
123	209.7	
123	209.9	
123	209.65	
122	210.5	
122	209.90	
122	211.2	
122	210.16	
121	211.7	
121	210.51	
121	212.0	
121	211.05	
120	212.3	
120	211.70	B.M. Railroad spike in a 24" maple Sta. 120+50; 53 feet right Elev. = 214.50
120	212.2	
120	212.34	
119	213.4	
119	211.99	
119	213.9	
119	213.42	
118	215.7	
118	213.40	
118	213.5	
118	212.95	
117	212.8	
117	212.04	B.M. Left outer corner bottom concrete step to building Sta. 117+16; Left 60 feet Elev. = 213.69
116	211.6	
116	210.70	
116	209.9	
116	209.13	
116	208.3	
116	207.79	
115	207.1	
115	206.91	
115	206.4	B.M. Right outer corner concrete platform to building Sta. 114+68; Right 53 feet Elev. = 206.10
115	206.48	
115	206.5	
114	206.8	
114	206.75	

Profile Data:
 Present & Surface: 0.50%
 ESTABLISHED & GRADE: 1.29%
 ESTABLISHED & GRADE: 3.13%
 ESTABLISHED & GRADE: 0.50%