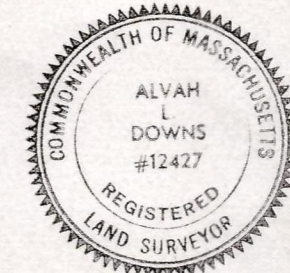
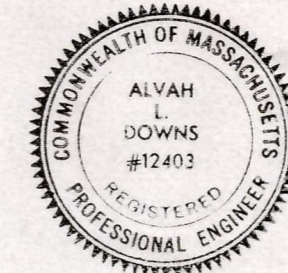
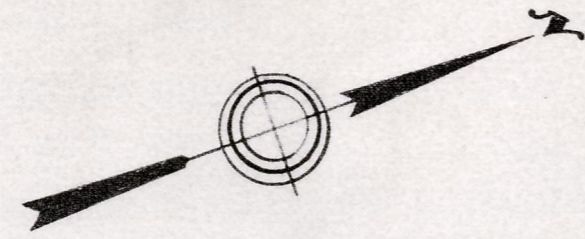


# Plan of UNIVERSITY AVENUE, WESTWOOD

Laid out as a Public Way  
across the tracks of the  
PENN CENTRAL TRANSPORTATION COMPANY  
as made by the Norfolk County Commissioners  
by Return dated April 9, 1974  
Scale: 1 inch = 20 feet  
Alvah L. Downs, County Engineer



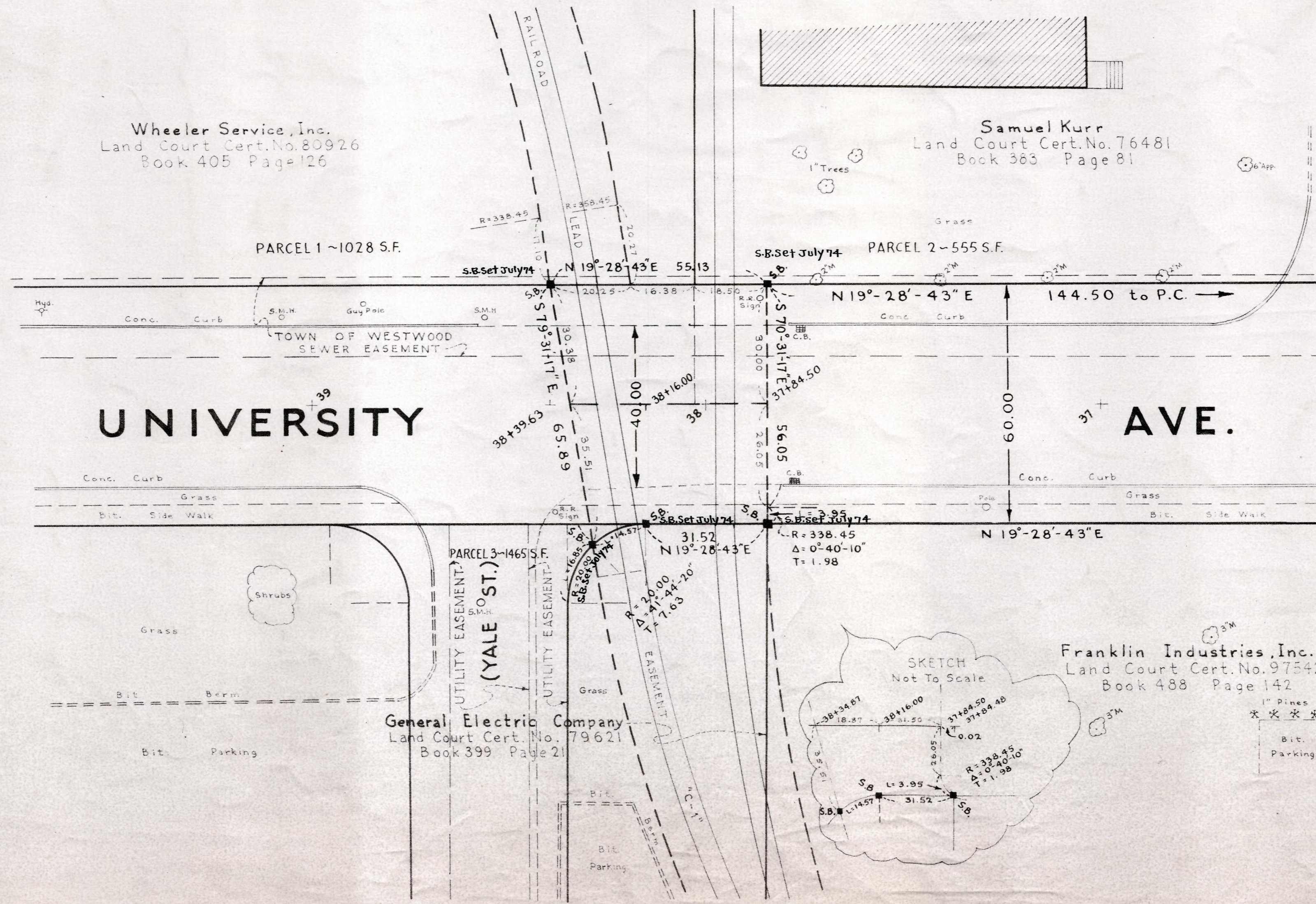
*Alvah L. Downs*



*James Collins* CHAIRMAN

Wheeler Service, Inc.  
Land Court Cert. No. 80926  
Book 405 Page 126

Samuel Kurr  
Land Court Cert. No. 76481  
Book 383 Page 81



Franklin Industries, Inc.  
Land Court Cert. No. 97542  
Book 488 Page 142

General Electric Company  
Land Court Cert. No. 79621  
Book 399 Page 21

