

Plan and Profile showing the Relocation and Widening of **NORTH STREET, BRAINTREE**

between
GRANITE STREET AND YANKEE DIVISION HIGHWAY

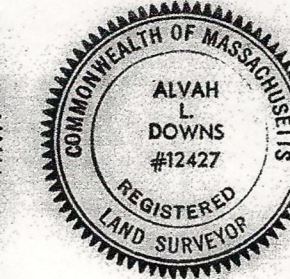
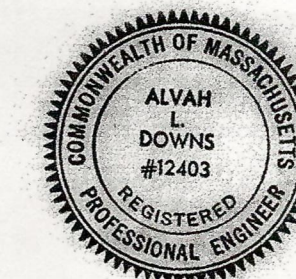
as made by the Norfolk County Commissioners

by Return dated September 9, 1975

Horizontal Scale: 1 inch = 40 feet

Vertical Scale: 1 inch = 8 feet

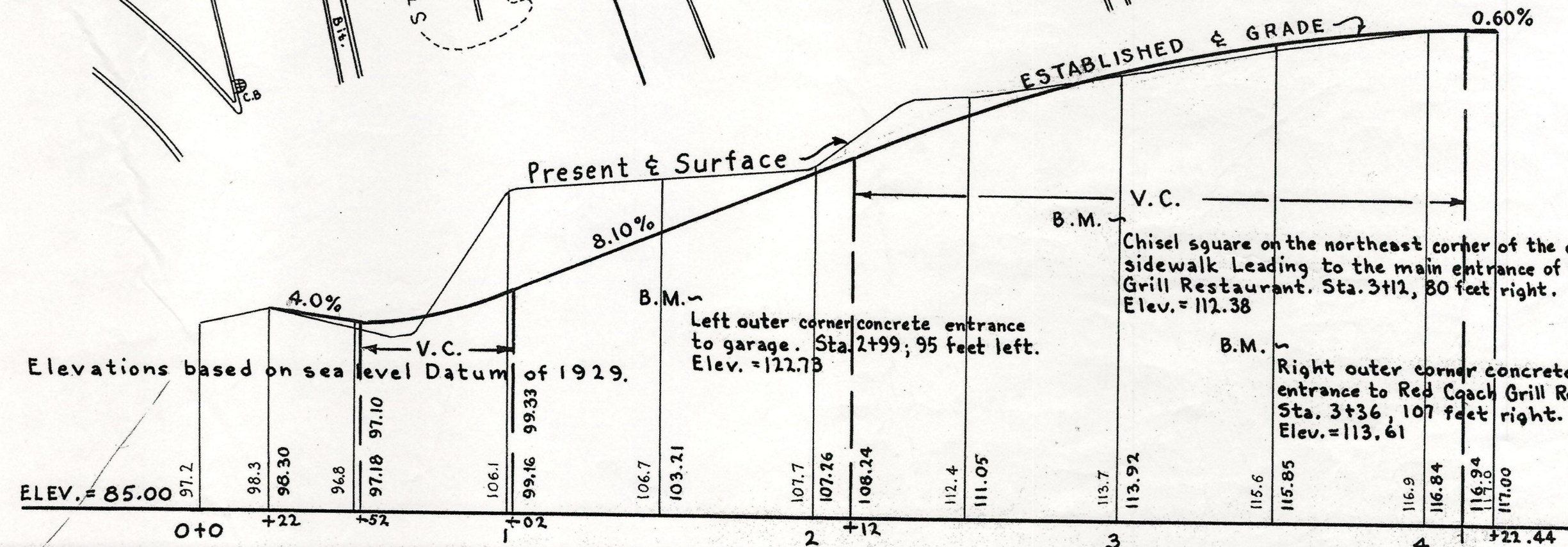
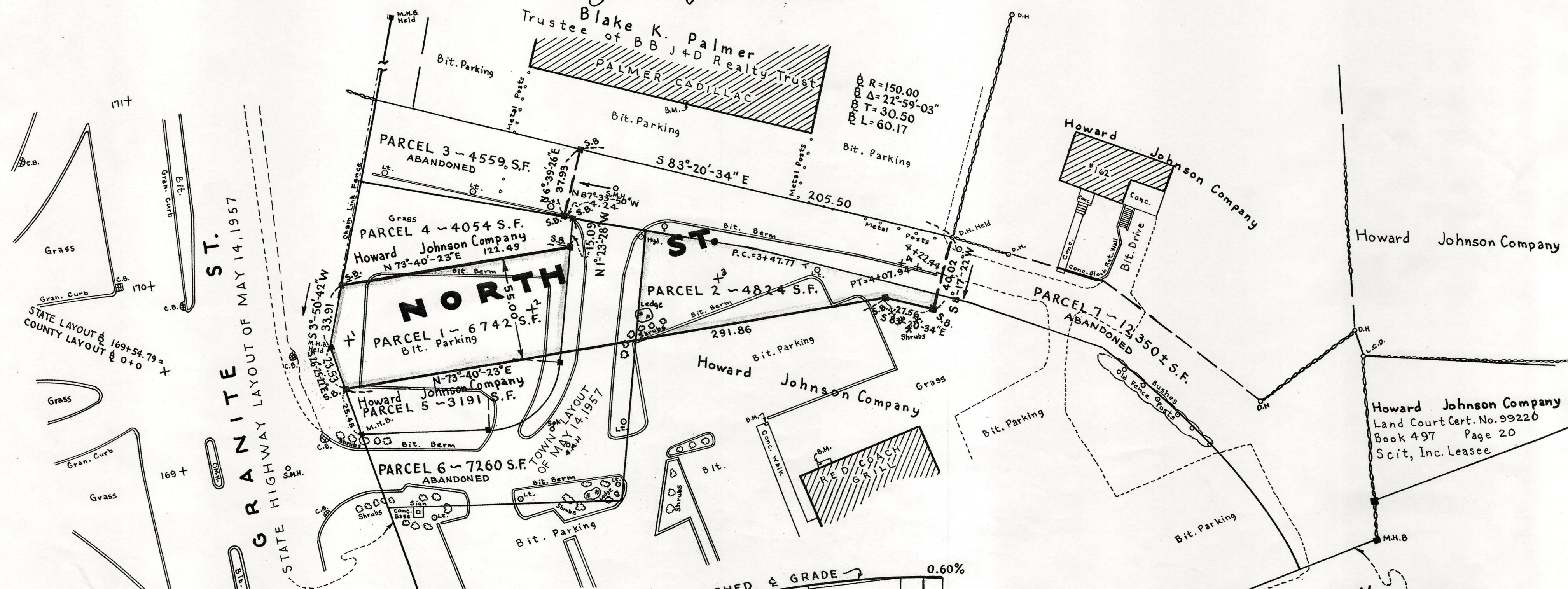
Alvah L. Downs, County Engineer



Alvah L. Downs



James Collins - CHAIRMAN



YANKEE DIVISION HIGHWAY
STATE HIGHWAY LAYOUT OF FEBRUARY 14, 1956