

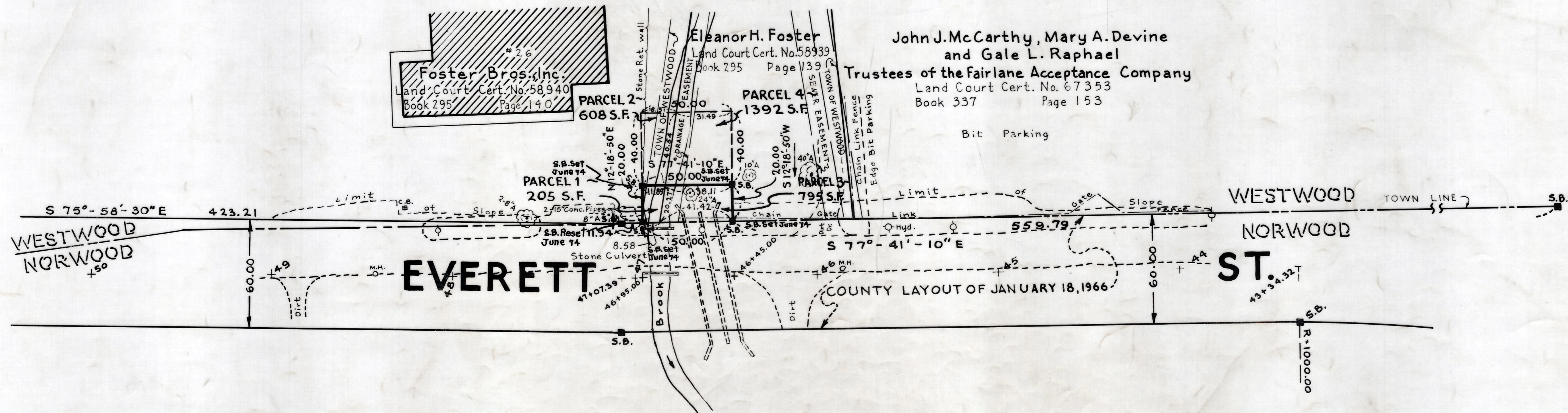
Plan showing the Widening
of
EVERETT STREET, WESTWOOD

between
STATION 46+45 AND STATION 46+95
as made by the Norfolk County Commissioners
by Return dated May 8, 1973
Scale: 1 inch = 40 feet

Alvah L. Downs, County Engineer
James Collins CHAIRMAN



Alvah L. Downs



Office Copy