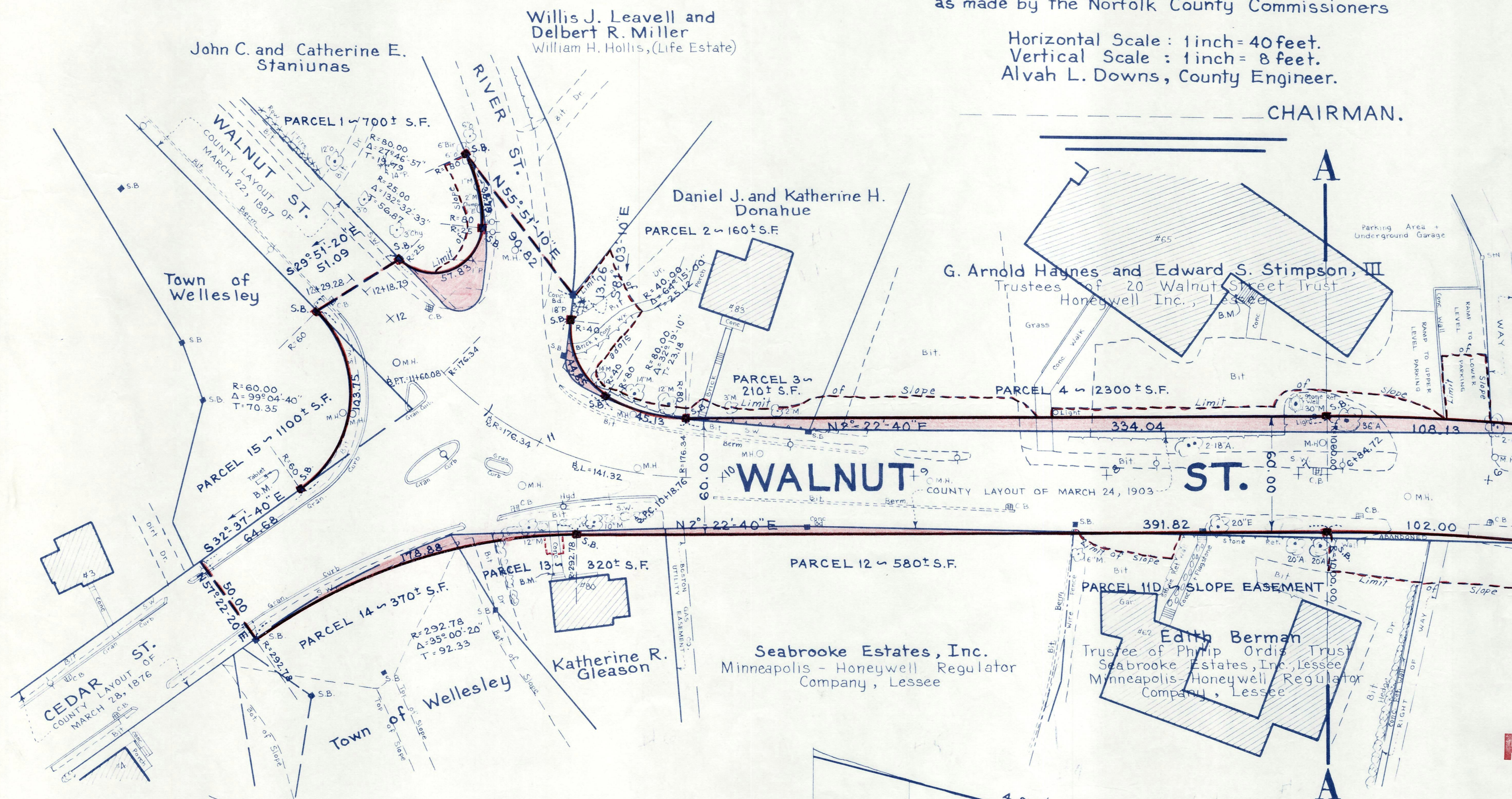


Plan and Profile
showing the Relocation and Widening
of

WALNUT STREET, WELLESLEY

between
CEDAR STREET AND A POINT ABOUT 150 FEET SOUTHERLY OF THE NEWTON CITY LINE
as made by the Norfolk County Commissioners

Horizontal Scale : 1 inch = 40 feet.
Vertical Scale : 1 inch = 8 feet.
Alvah L. Downs, County Engineer.



CHAIRMAN.

*Plans used at
hearing Nov. 14, 1972*

**PRELIMINARY
PLAN**

