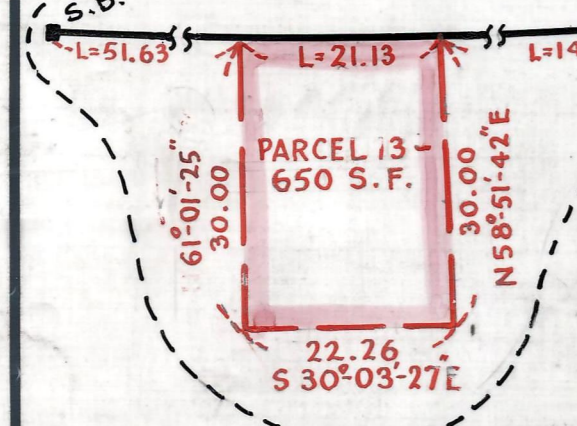
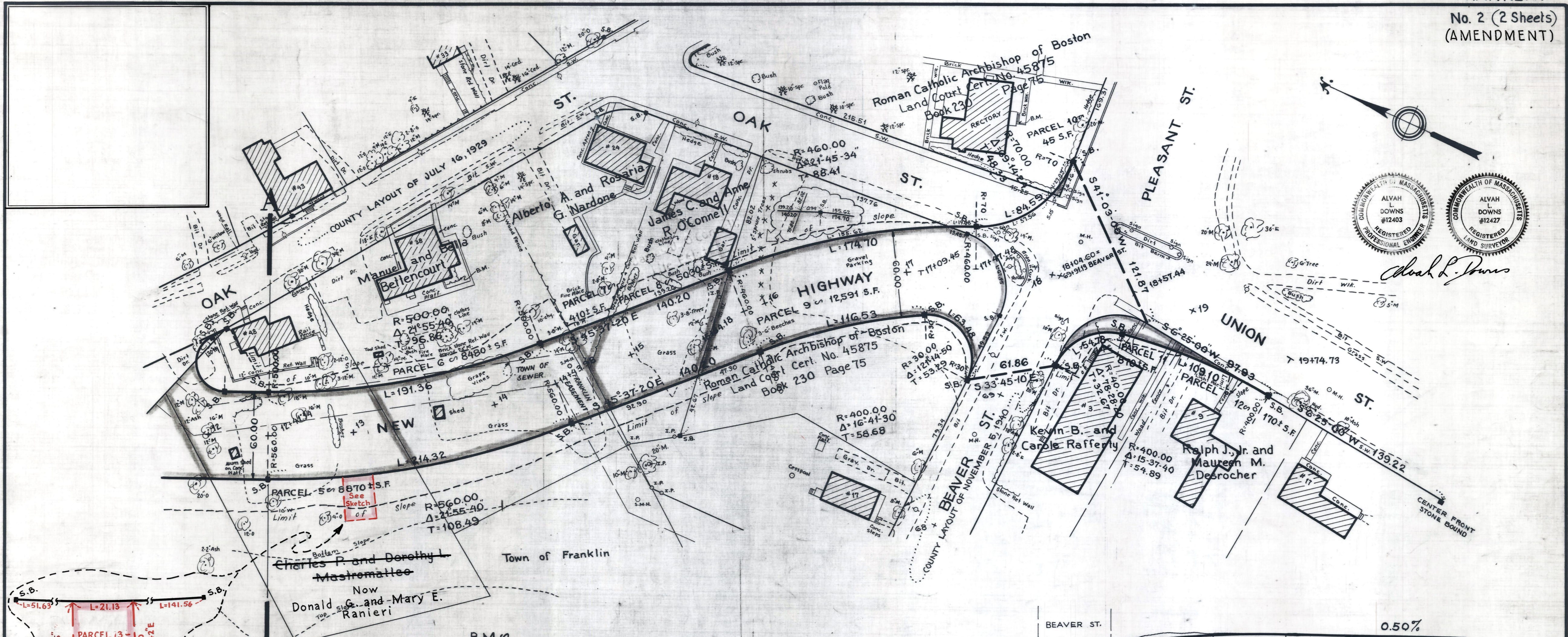


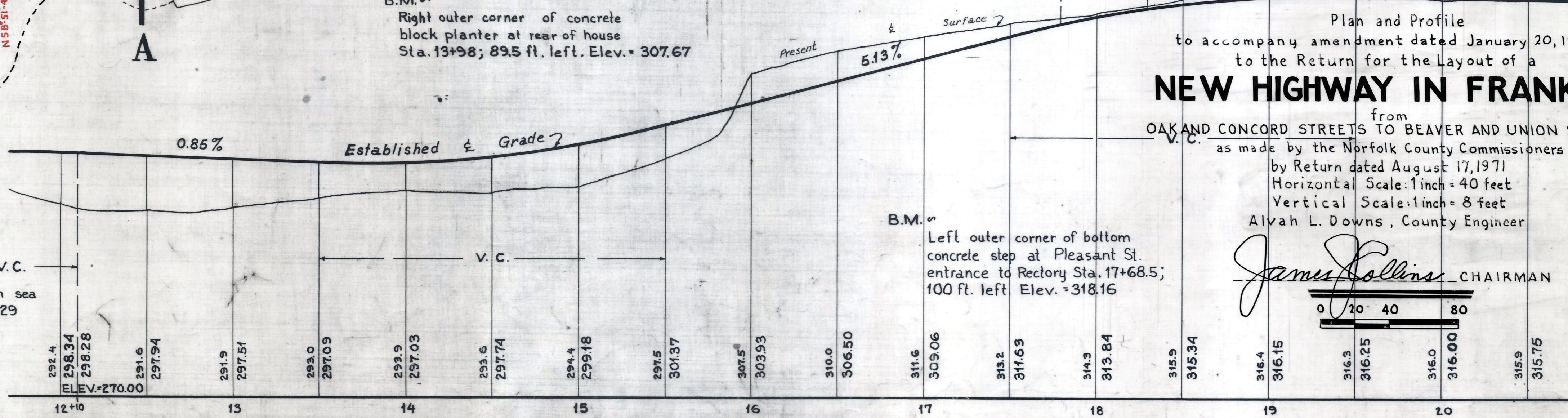
*Alvah L. Downs*



**A**

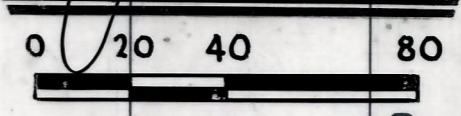
B.M.  $\infty$   
Right outer corner of concrete block planter at rear of house Sta. 13+98; 89.5 ft. left. Elev. = 307.67

B.M.  $\infty$   
Left outer corner of bottom concrete step at Pleasant St. entrance to Rectory Sta. 17+68.5; 100 ft. left Elev. = 318.16



Plan and Profile  
to accompany amendment dated January 20, 1976  
to the Return for the Layout of a  
**NEW HIGHWAY IN FRANKLIN**  
from  
OAK AND CONCORD STREETS TO BEAVER AND UNION STREETS  
as made by the Norfolk County Commissioners  
by Return dated August 17, 1971  
Horizontal Scale: 1 inch = 40 feet  
Vertical Scale: 1 inch = 8 feet  
Alvah L. Downs, County Engineer

*James Collins* CHAIRMAN



Elevations based on sea level datum of 1929