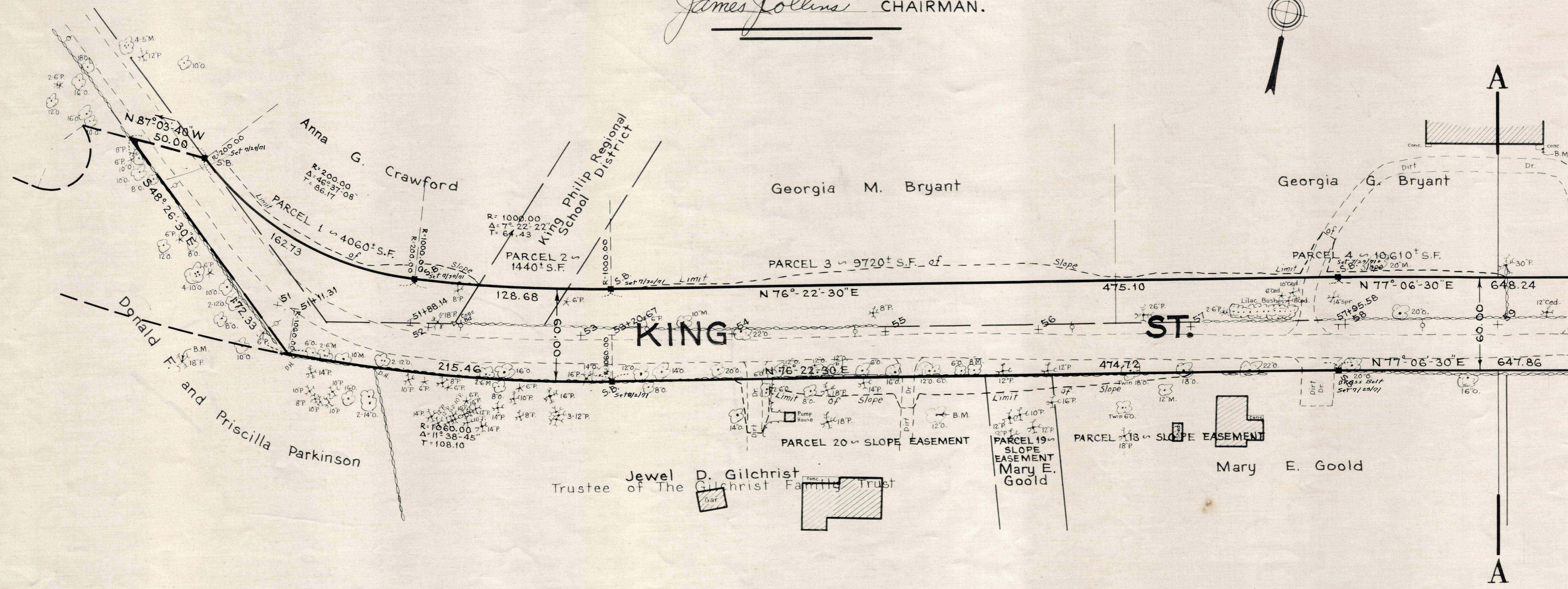


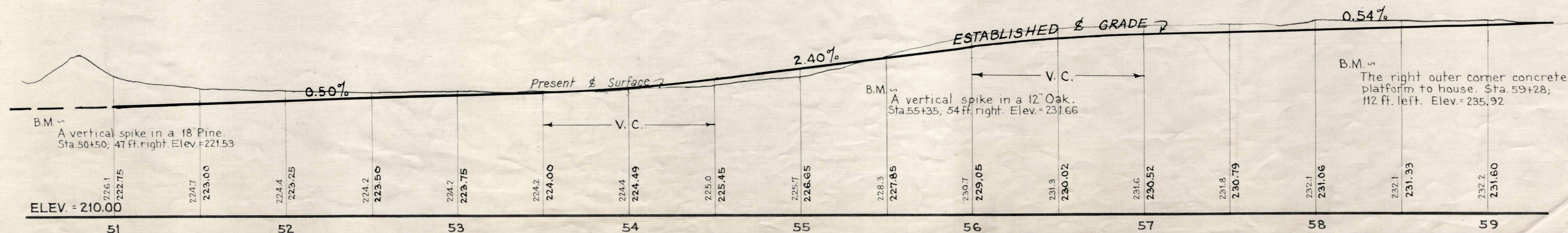
Plan and Profile
showing the Relocation and Widening
of
KING STREET, NORFOLK
between

MAPLE STREET AND UNION STREET
as made by the Norfolk County Commissioners
by Return dated December 29, 1970
Horizontal Scale: 1 inch = 40 feet.
Vertical Scale: 1 inch = 8 feet.
Charles C. Cain, County Engineer.

James Collins CHAIRMAN.



Elevations based on sea level datum of 1929.



574-1