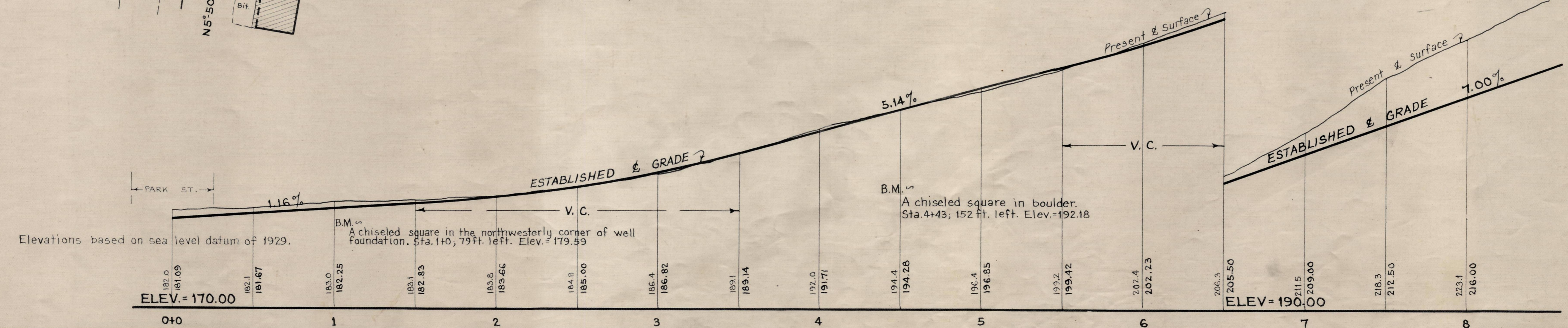
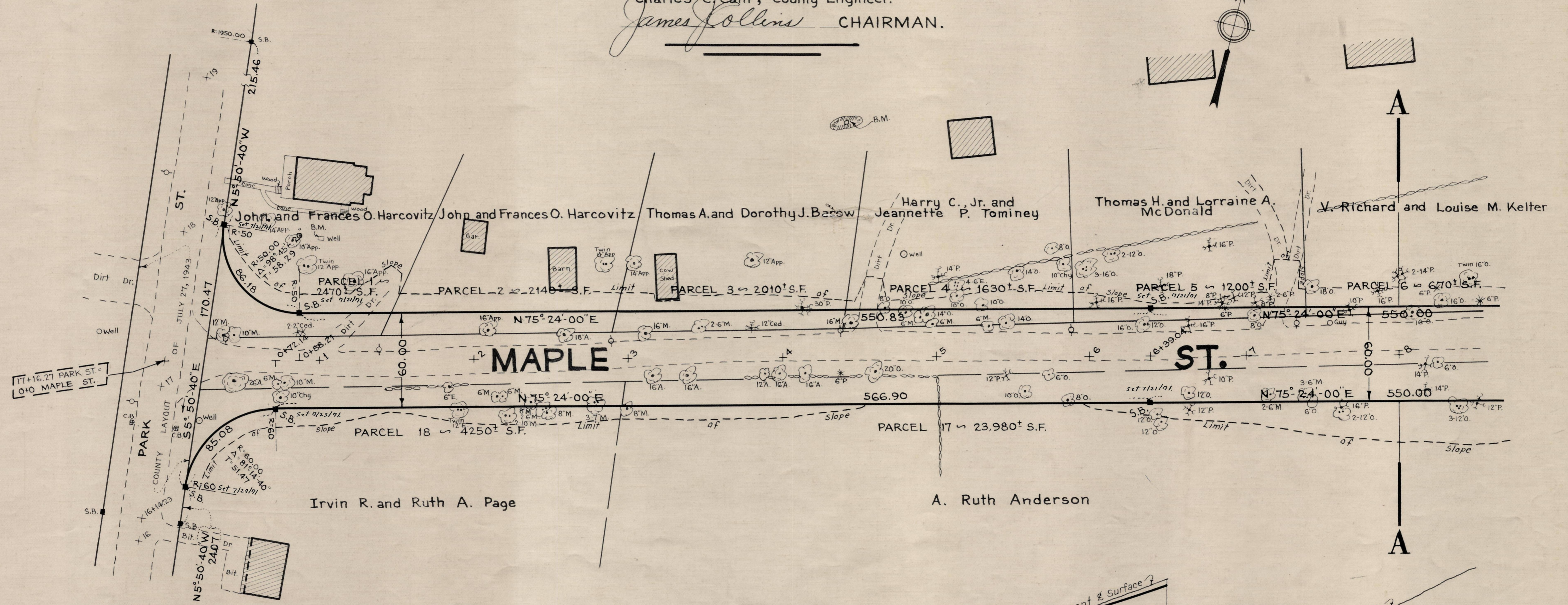
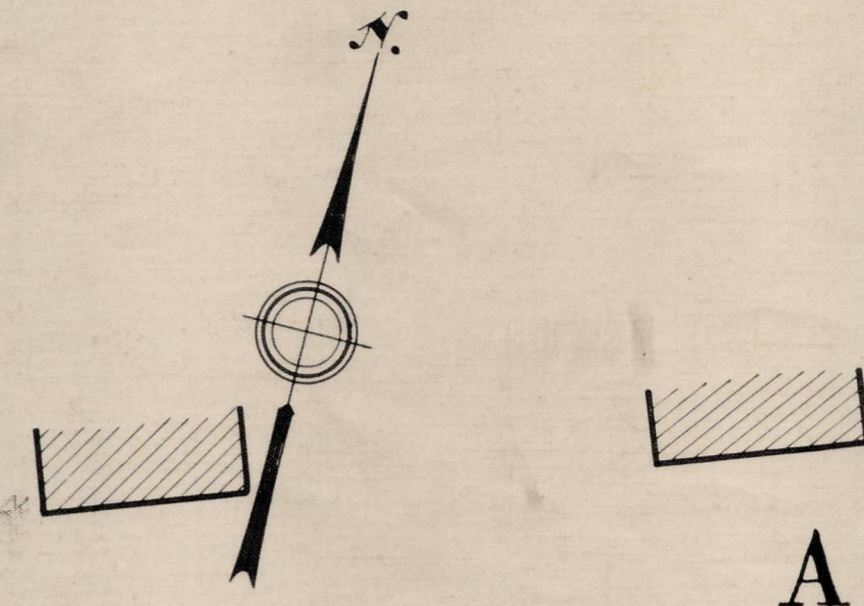


Plan and Profile
showing the Relocation and Widening
of
MAPLE STREET, NORFOLK
between

PARK STREET AND KING STREET
as made by the Norfolk County Commissioners
by Return dated December 29, 1970
Horizontal Scale: 1 inch = 40 feet.
Vertical Scale: 1 inch = 8 feet.
Charles C. Cain, County Engineer.

James Collins CHAIRMAN.



Elevations based on sea level datum of 1929.

B.M. A chiseled square in the northwesterly corner of well foundation. Sta. 1+0, 79 ft. left. Elev. = 179.59

B.M. A chiseled square in boulder. Sta. 4+43, 152 ft. left. Elev. = 192.18