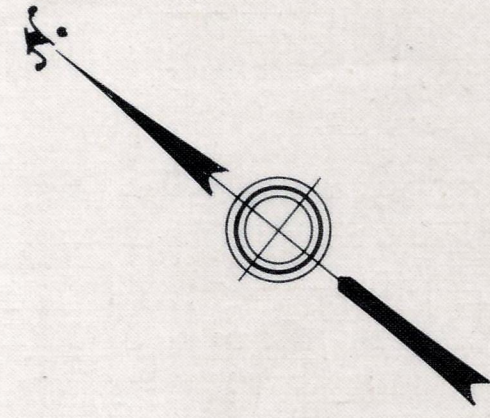


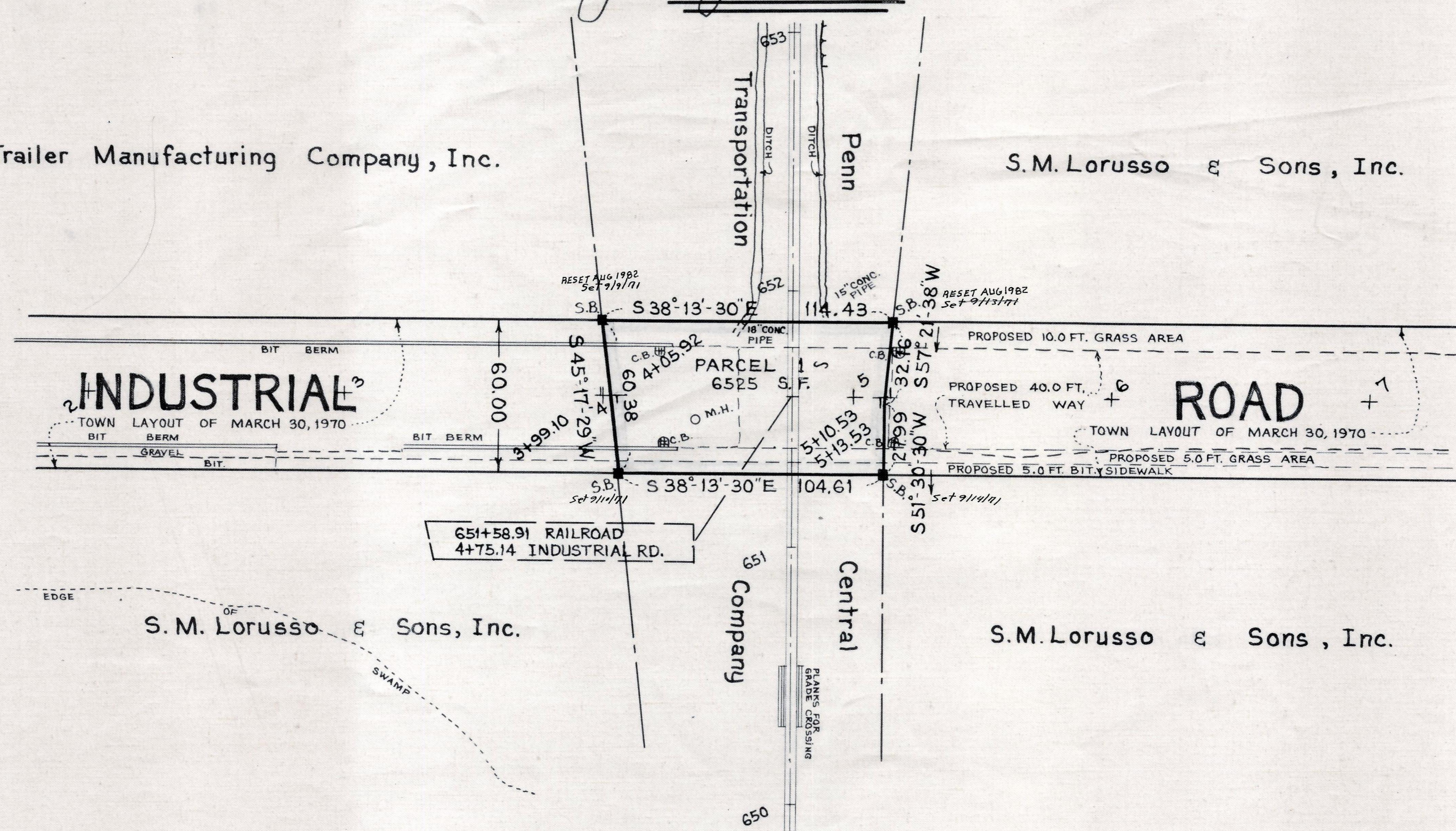
Plan and Profile
of
INDUSTRIAL ROAD, WALPOLE

Laid out as a Public Way
across the tracks of the
PENN CENTRAL TRANSPORTATION COMPANY
as made by the Norfolk County Commissioners
by Return dated September 22, 1970
Horizontal Scale: 1 inch = 40 feet.
Vertical Scale: 1 inch = 8 feet.
Charles C. Cain, County Engineer.
James Collins CHAIRMAN.



Boston Trailer Manufacturing Company, Inc.

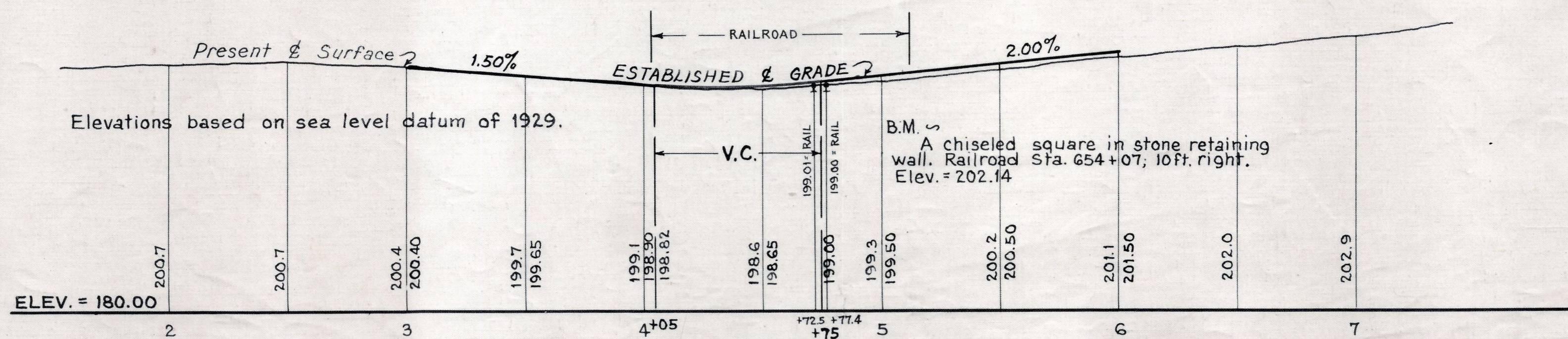
S.M. Lorusso & Sons, Inc.



651+58.91 RAILROAD
4+75.14 INDUSTRIAL RD.

S.M. Lorusso & Sons, Inc.

S.M. Lorusso & Sons, Inc.



Elevations based on sea level datum of 1929.

B.M. \square
A chiseled square in stone retaining wall. Railroad Sta. 654+07; 10 ft. right. Elev. = 202.14

COMPLETE