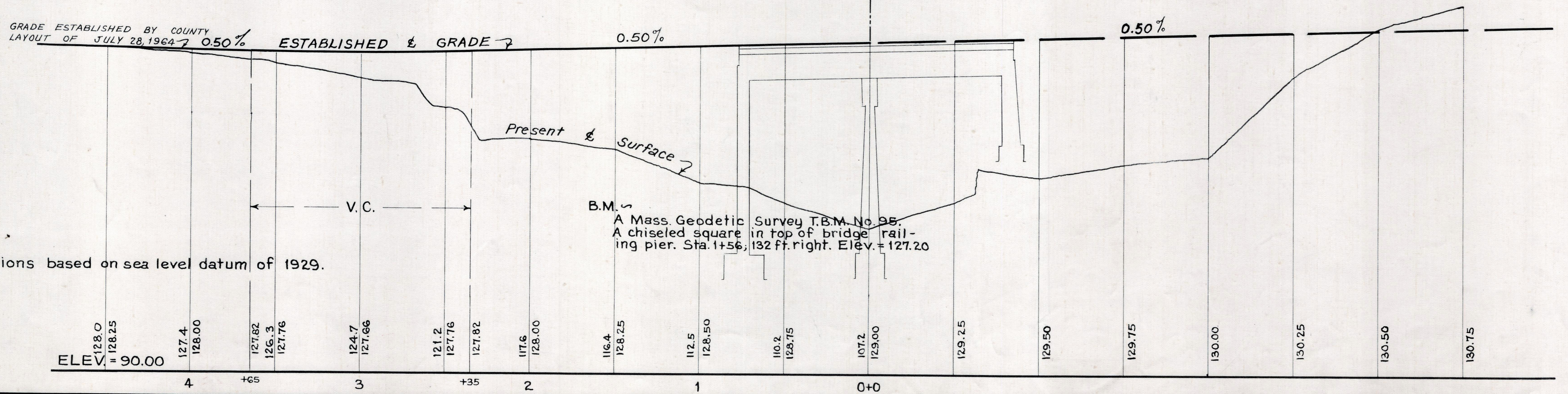
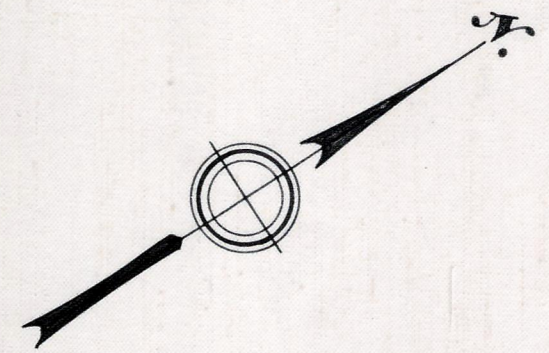
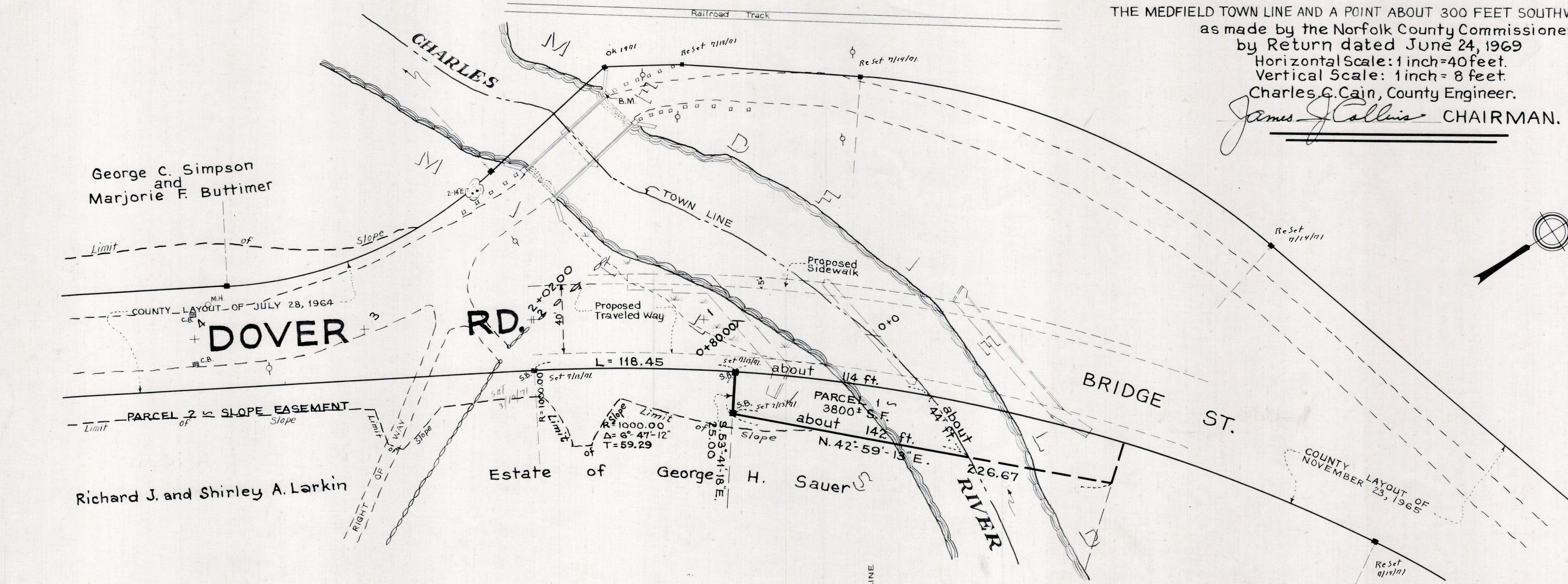


Plan and Profile
showing the Relocation and Widening
of
DOVER ROAD, MILLIS
between

THE MEDFIELD TOWN LINE AND A POINT ABOUT 300 FEET SOUTHWESTERLY
as made by the Norfolk County Commissioners
by Return dated June 24, 1969
Horizontal Scale: 1 inch = 40 feet.
Vertical Scale: 1 inch = 8 feet.
Charles G. Cain, County Engineer.

James J. Collins CHAIRMAN.



Elevations based on sea level datum of 1929.