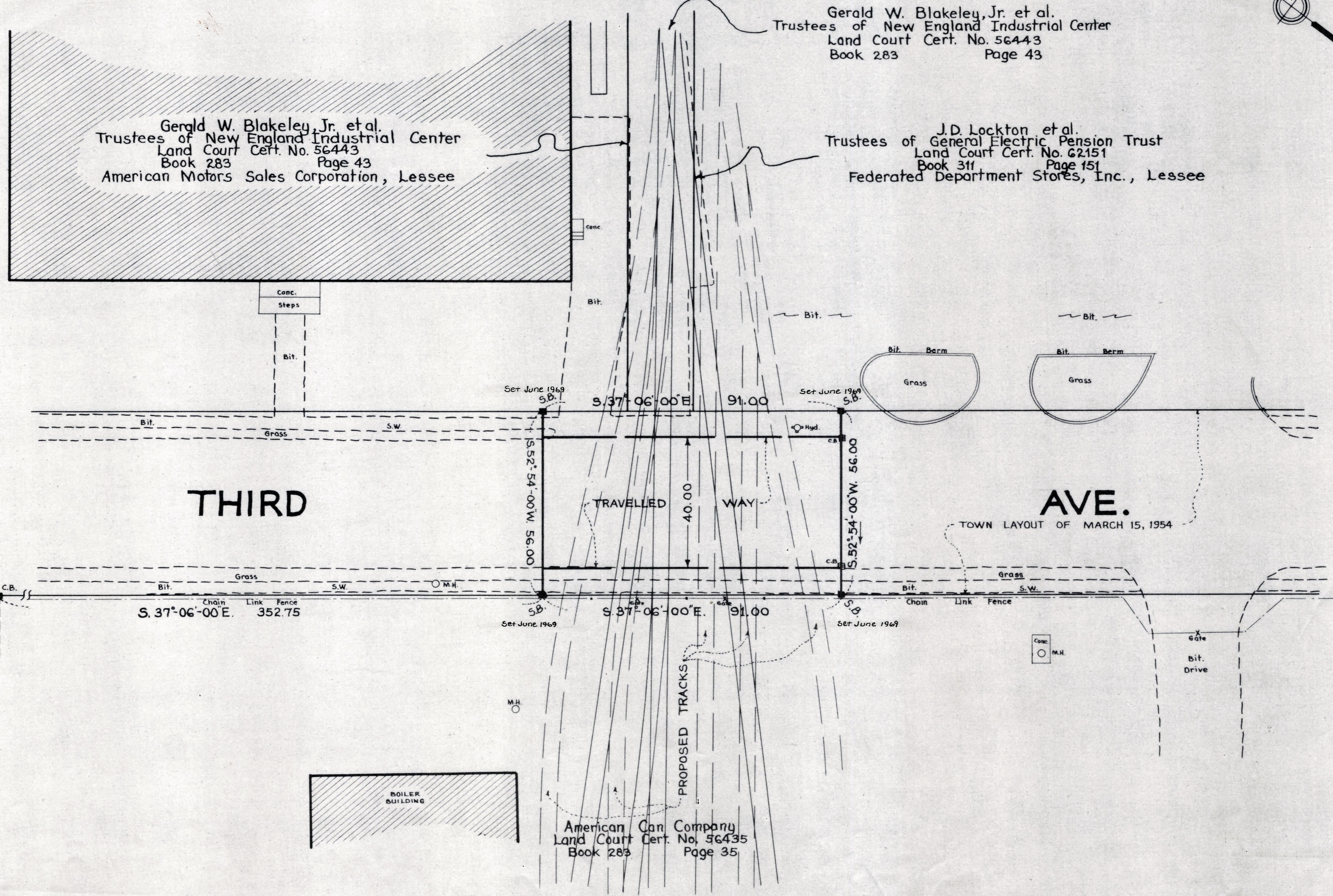
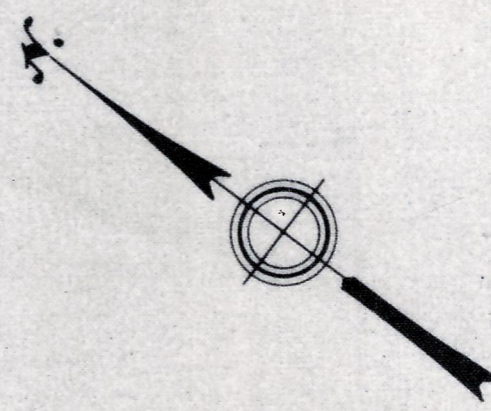


Plan showing Alteration of Railroad Crossing  
on  
**THIRD AVENUE, NEEDHAM**

as made by the Norfolk County Commissioners  
by Decision dated September 17, 1968

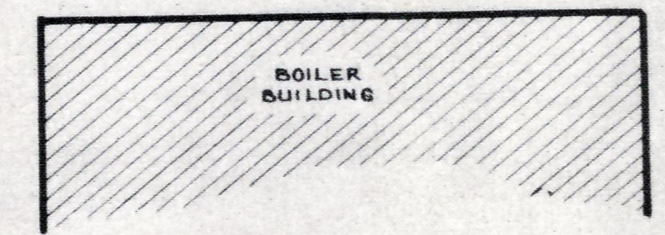
Scale: 1" = 20 feet.  
Charles G. Cain, County Engineer.  
*James J. Collins* CHAIRMAN.



B. STREET

THIRD

AVE.



American Can Company  
Land Court Cert. No. 56435  
Book 283 Page 35

Gerald W. Blakeley, Jr. et al.  
Trustees of New England Industrial Center  
Land Court Cert. No. 56443  
Book 283 Page 43

J.D. Lockton et al.  
Trustees of General Electric Pension Trust  
Land Court Cert. No. 62151  
Book 311 Page 151  
Federated Department Stores, Inc., Lessee