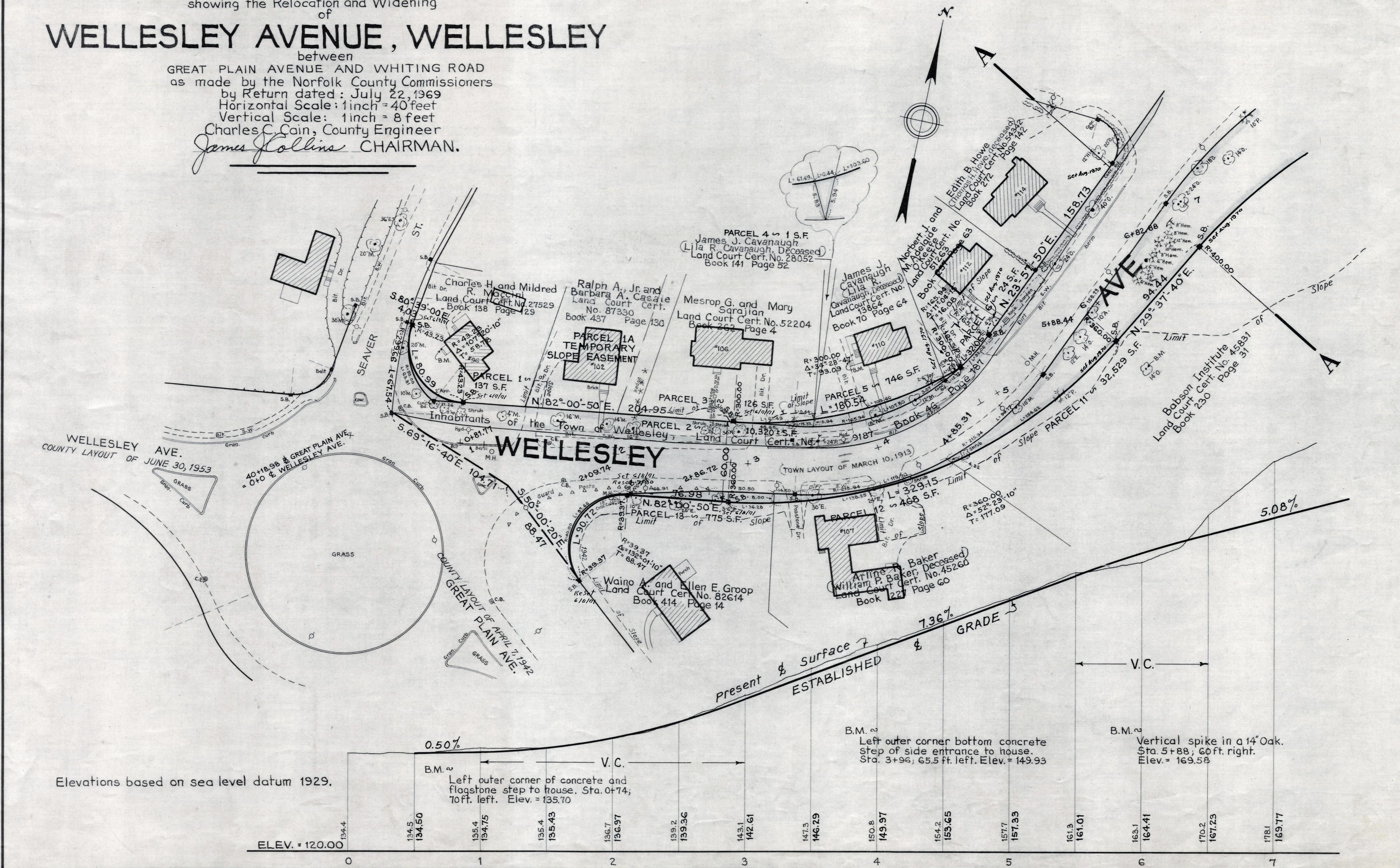


Plan and Profile showing the Relocation and Widening of WELLESLEY AVENUE, WELLESLEY

between
GREAT PLAIN AVENUE AND WHITING ROAD
as made by the Norfolk County Commissioners
by Return dated: July 22, 1969
Horizontal Scale: 1 inch = 40 feet
Vertical Scale: 1 inch = 8 feet
Charles C. Cain, County Engineer
James Collins CHAIRMAN.



Elevations based on sea level datum 1929.

Station	Elevation
0	120.00
0.1	134.4
0.2	134.5
0.3	134.75
0.4	135.4
0.5	135.43
0.6	136.7
0.7	136.97
0.8	139.2
0.9	139.36
1.0	143.1
1.1	142.61
1.2	147.3
1.3	146.29
1.4	150.8
1.5	149.97
1.6	154.2
1.7	153.65
1.8	157.7
1.9	157.33
2.0	161.3
2.1	161.01
2.2	163.1
2.3	164.41
2.4	170.2
2.5	167.23
2.6	178.1
2.7	169.77