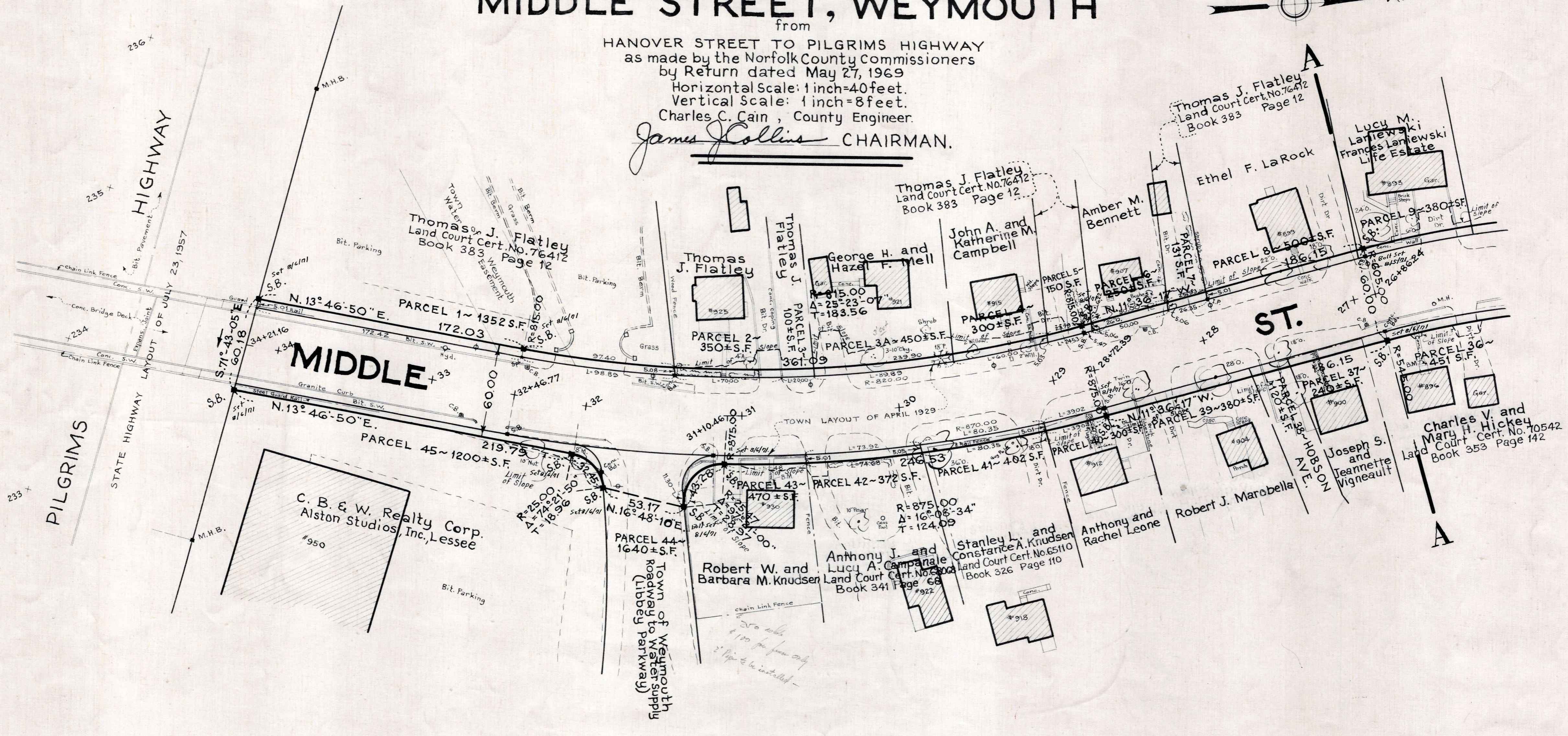
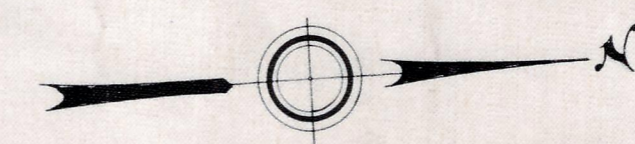


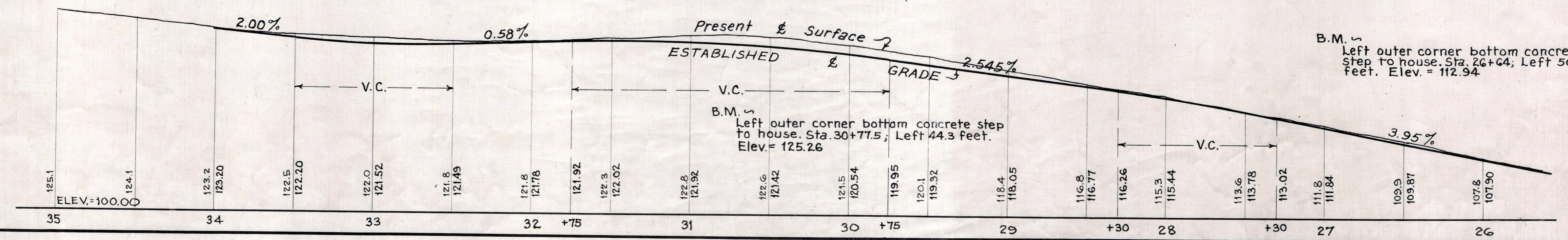
MIDDLE STREET, WEYMOUTH

Plan and Profile
showing the Relocation and Widening
of a portion of
HANOVER STREET TO PILGRIMS HIGHWAY
as made by the Norfolk County Commissioners
by Return dated May 27, 1969
Horizontal Scale: 1 inch=40 feet.
Vertical Scale: 1 inch=8 feet.
Charles C. Cain, County Engineer.

James Collins CHAIRMAN.



Elevations based on sea level datum of 1929.



B.M. ↙
Left outer corner bottom concrete
step to house, Sta. 26+64; Left 50
feet. Elev. = 112.94

B.M. ↙
Left outer corner bottom concrete step
to house, Sta. 30+77.5; Left 44.3 feet.
Elev. = 125.26