

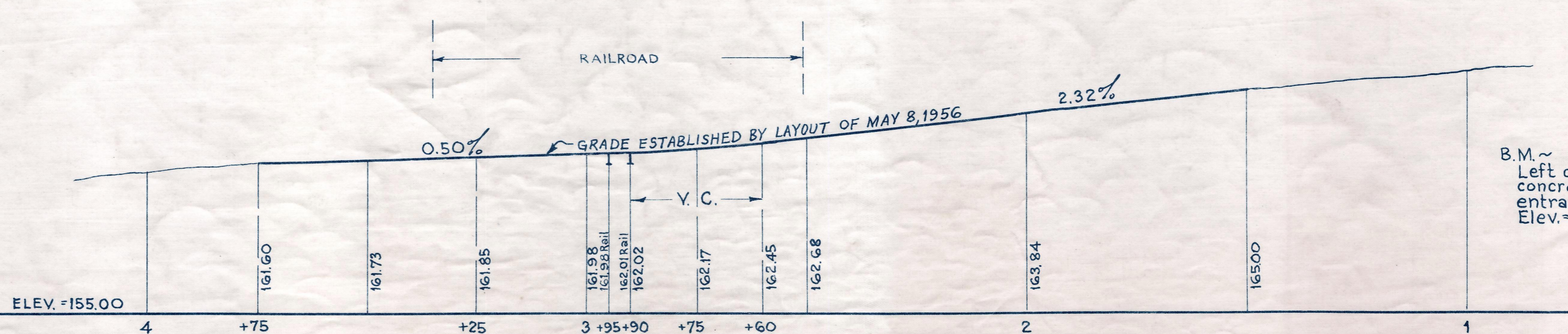
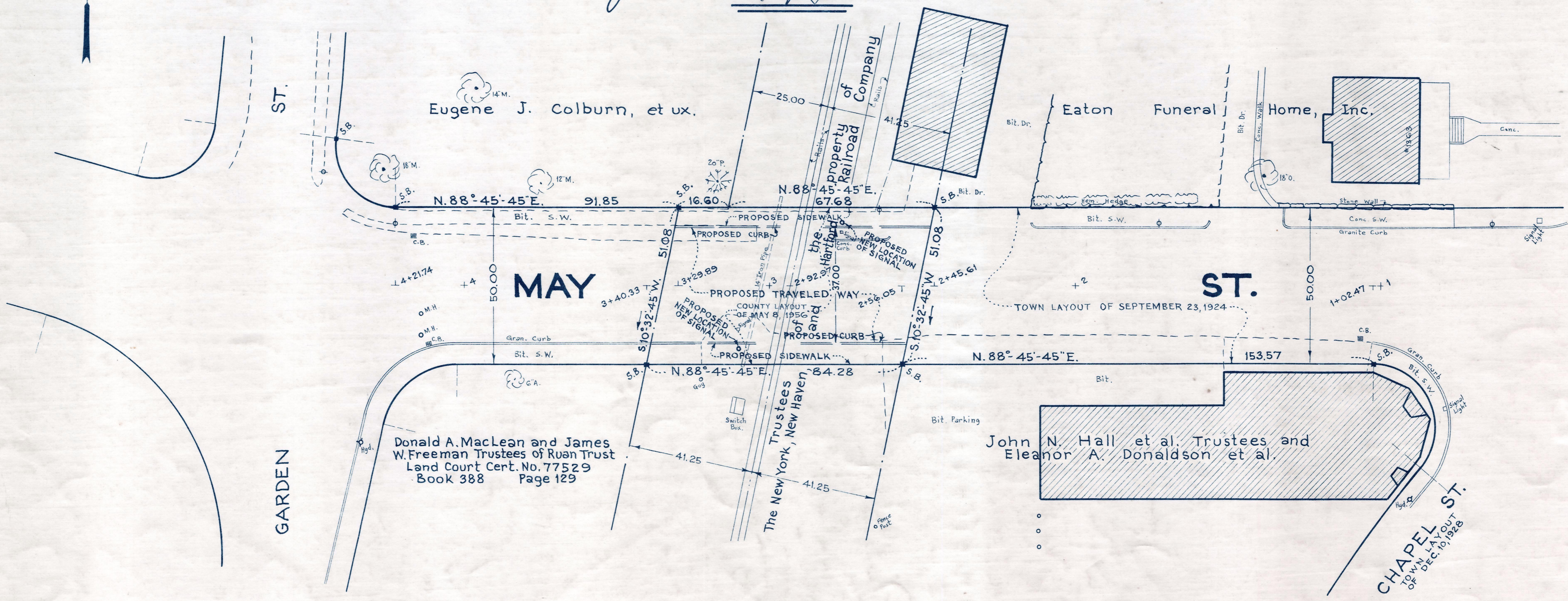
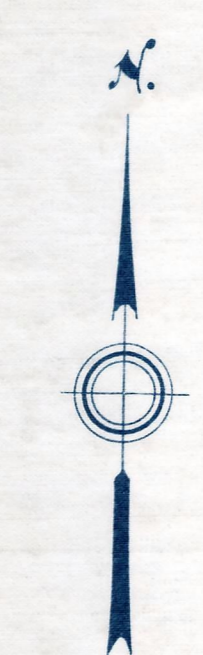
Plan and Profile
showing Alteration of Railroad Crossing
on

MAY STREET, NEEDHAM

as made by the Norfolk County Commissioners
by Decision dated December 6, 1966
Horizontal Scale: 1 inch = 20 feet Vertical Scale: 1 inch = 4 feet.

Wallace S. Carson, County Engineer

John Francis Murphy CHAIRMAN.



Bench Mark:
A Mass. Dept. of Public Works standard
bench mark No. AB-15. A disk set in the top of
buttress on the north side of step at the east
entrance to the town hall. Elev. = 169.17

B.M. ~
Left outer corner of lower
concrete step at front main
entrance to Catholic Church.
Elev. = 167.77