

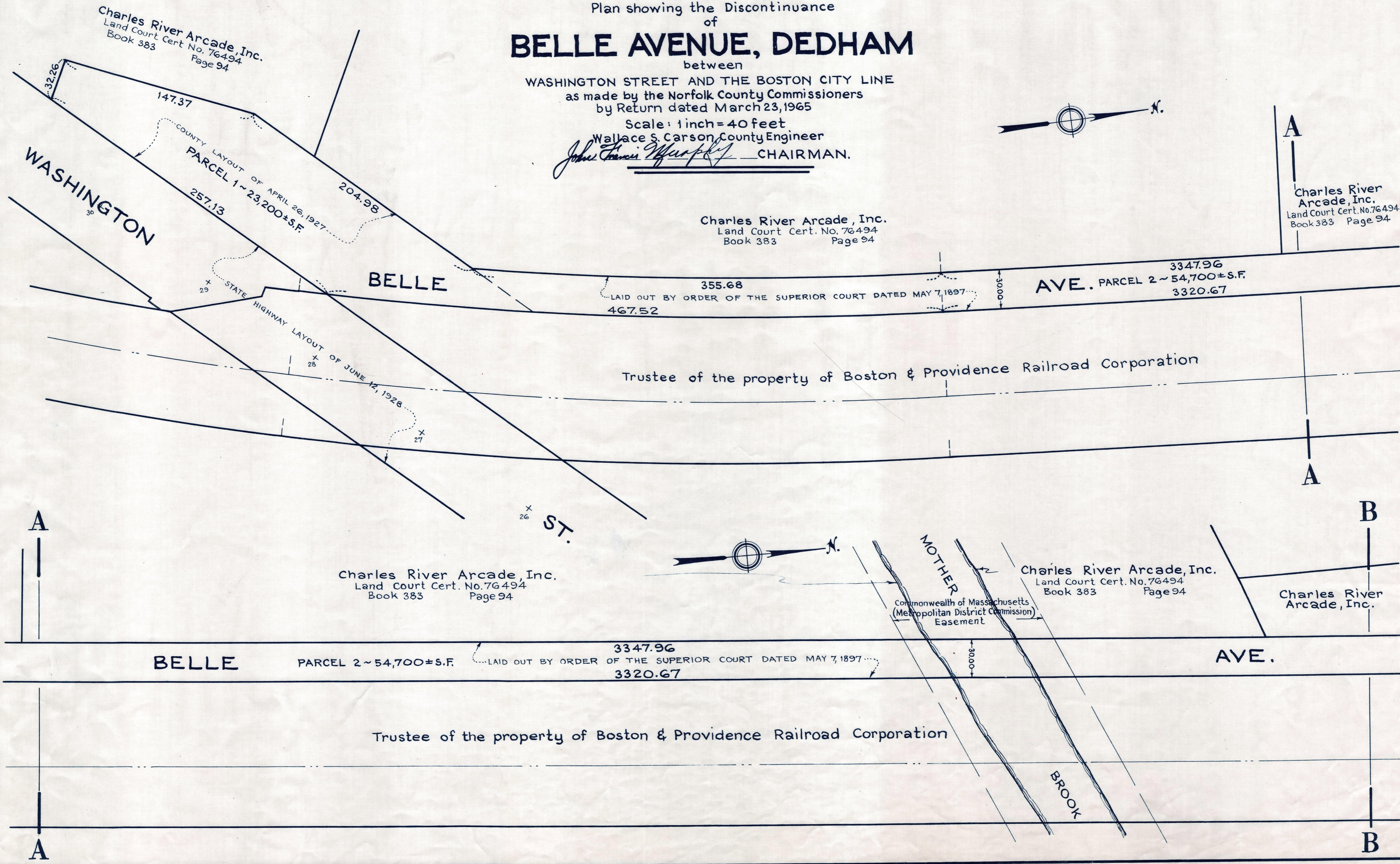
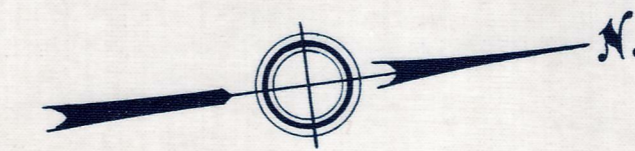
Plan showing the Discontinuance  
of  
**BELLE AVENUE, DEDHAM**  
between

WASHINGTON STREET AND THE BOSTON CITY LINE  
as made by the Norfolk County Commissioners  
by Return dated March 23, 1965

Scale: 1 inch = 40 feet

Wallace S. Carson, County Engineer

*John Francis Murphy* CHAIRMAN.



Charles River Arcade, Inc.  
Land Court Cert. No. 76494  
Book 383 Page 94

Charles River Arcade, Inc.  
Land Court Cert. No. 76494  
Book 383 Page 94

Charles River Arcade, Inc.  
Land Court Cert. No. 76494  
Book 383 Page 94

Charles River Arcade, Inc.  
Land Court Cert. No. 76494  
Book 383 Page 94

Charles River Arcade, Inc.  
Land Court Cert. No. 76494  
Book 383 Page 94

Charles River Arcade, Inc.