

Plan and Profile
showing the Relocation and Widening
of

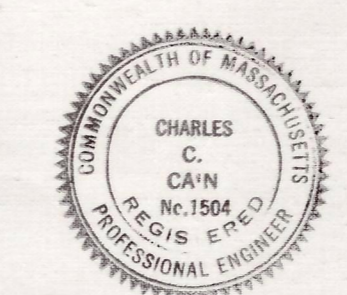
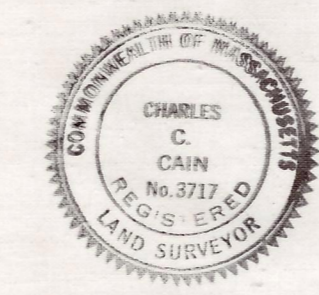
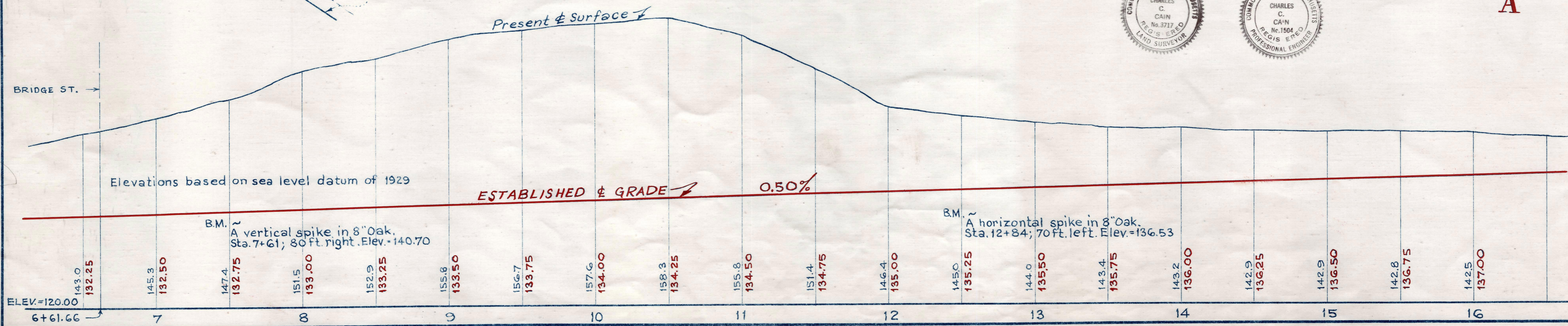
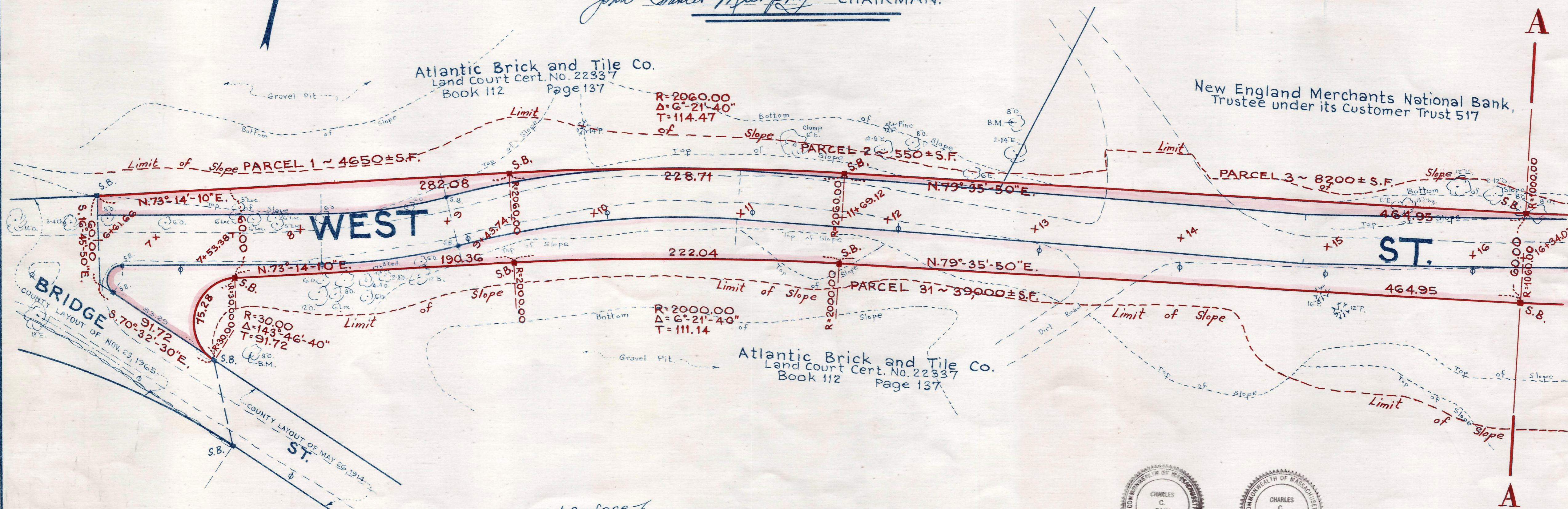
WEST STREET, MEDFIELD

between
BRIDGE STREET AND HARDING STREET
as made by the Norfolk County Commissioners
by Return dated November 22, 1966.
Horizontal Scale: 1 inch = 40 feet.
Vertical Scale: 1 inch = 8 feet.
Wallace S. Carson, County Engineer.

John Francis Murphy CHAIRMAN.

- A TRUE COPY -

Attest: *John L. Conner* Clerk.



EXTRA COPY