

OFFICE COPY

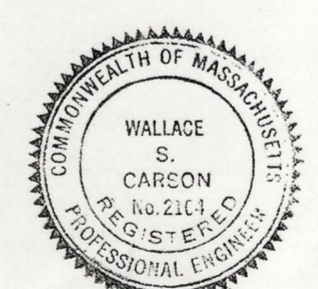
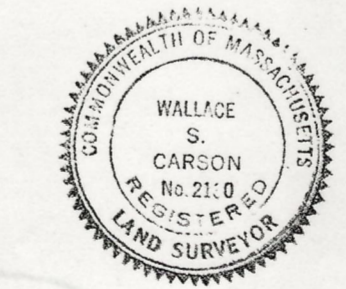
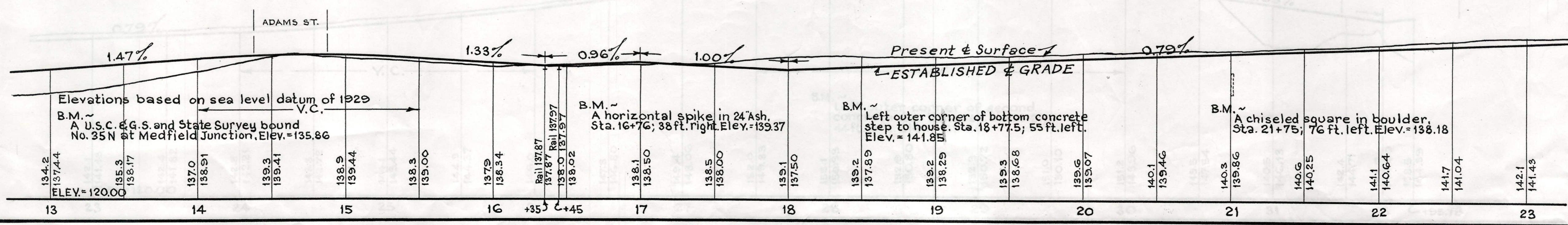
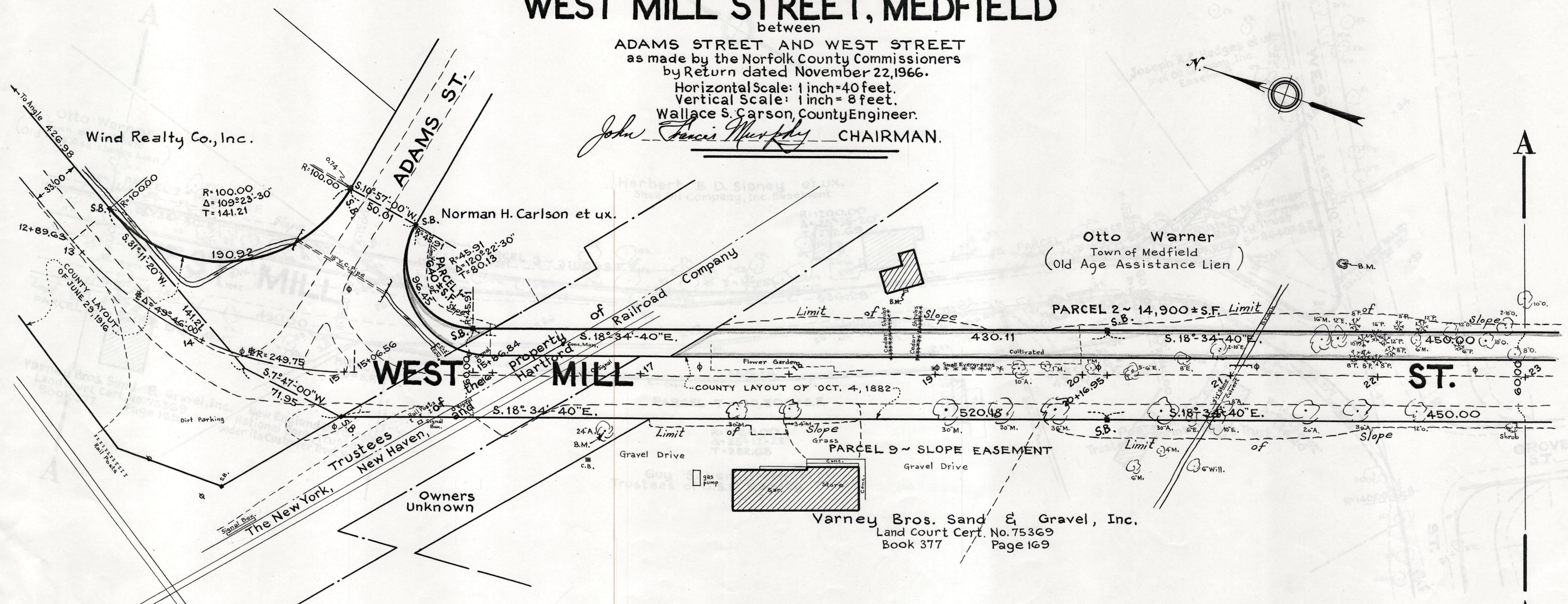
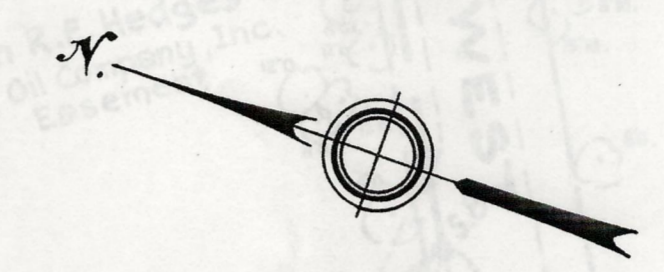
# Plan and Profile showing the Relocation and Widening of a portion of **WEST MILL STREET, MEDFIELD**

between  
**ADAMS STREET AND WEST STREET**  
as made by the Norfolk County Commissioners  
by Return dated November 22, 1966.

Horizontal Scale: 1 inch = 40 feet.  
Vertical Scale: 1 inch = 8 feet.

Wallace S. Carson, County Engineer.

*John Francis Murphy* CHAIRMAN.



OFFICE COPY

Taking Deed 4400/530  
Date: 12-15-1966  
Plan Book 221 Plan 1198 & 1199