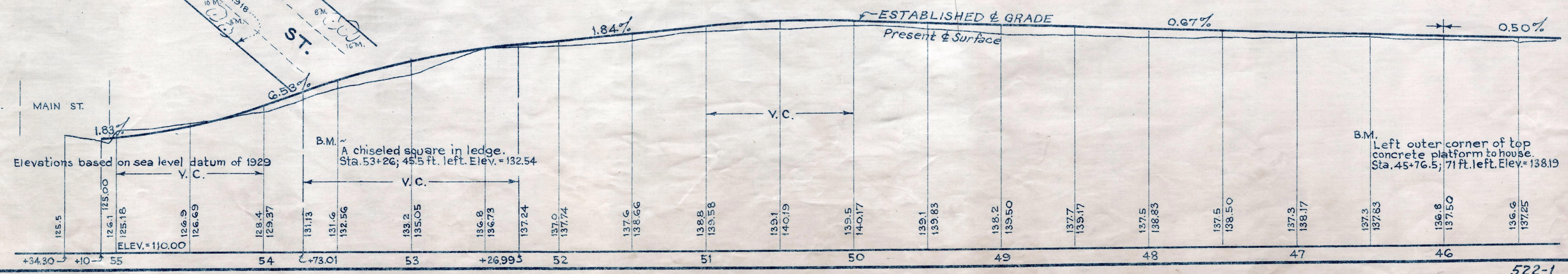
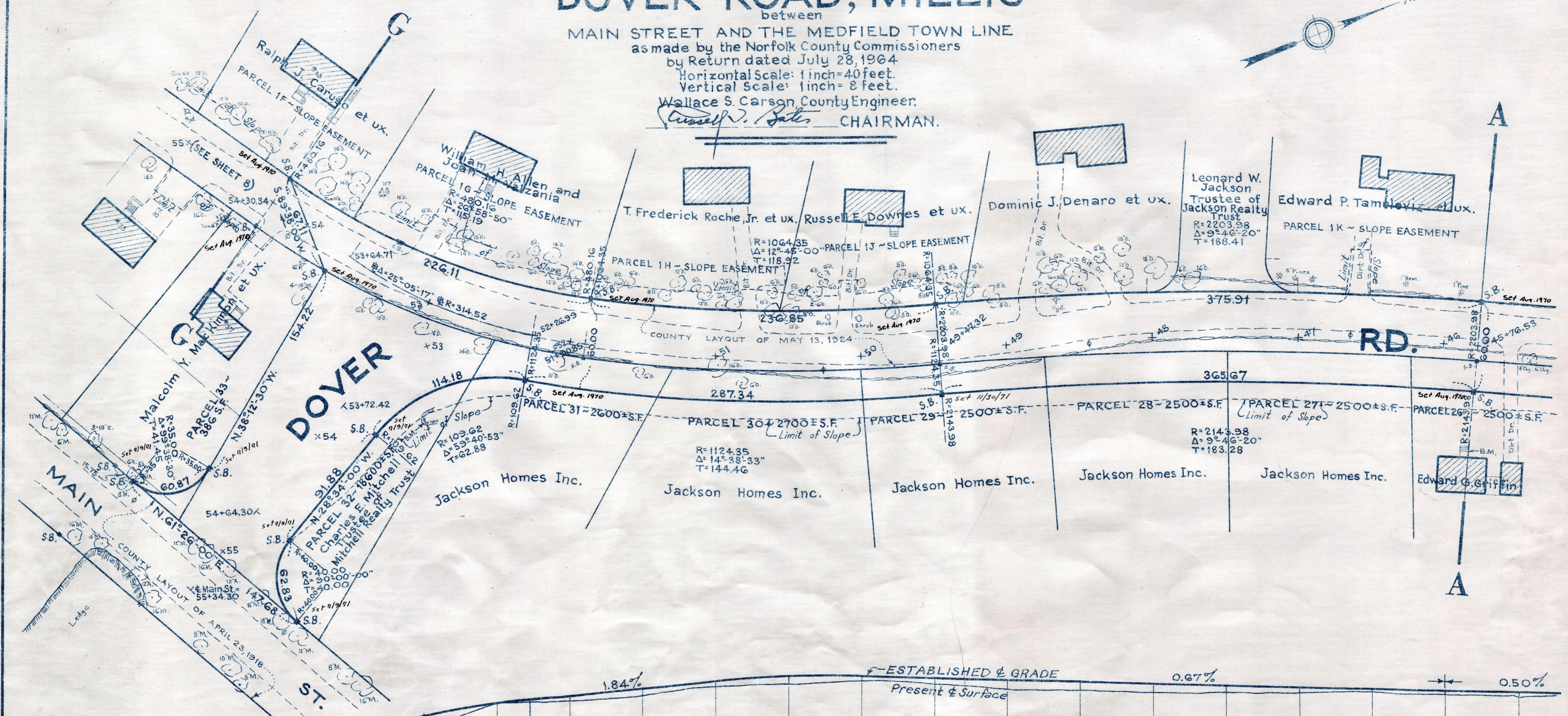
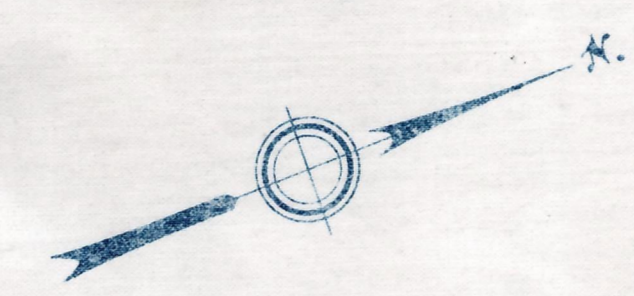


Plan and Profile  
showing the Relocation and Widening  
of  
**DOVER ROAD, MILLIS**

between  
MAIN STREET AND THE MEDFIELD TOWN LINE  
as made by the Norfolk County Commissioners  
by Return dated July 28, 1964  
Horizontal Scale: 1 inch = 40 feet.  
Vertical Scale: 1 inch = 8 feet.  
Wallace S. Carson County Engineer.  
*Russell W. Bates* CHAIRMAN.



522-1

Date of Entry Oct. 5, 1964  
REC. IN REGISTRY 4188-227 ~ 8-18-64  
PL. BK. 217 NO. 788-795 INCL. WITH TKG.