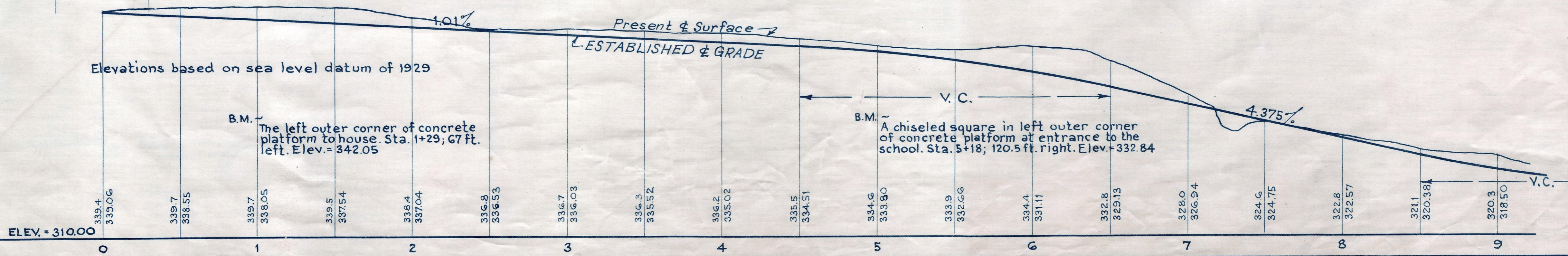
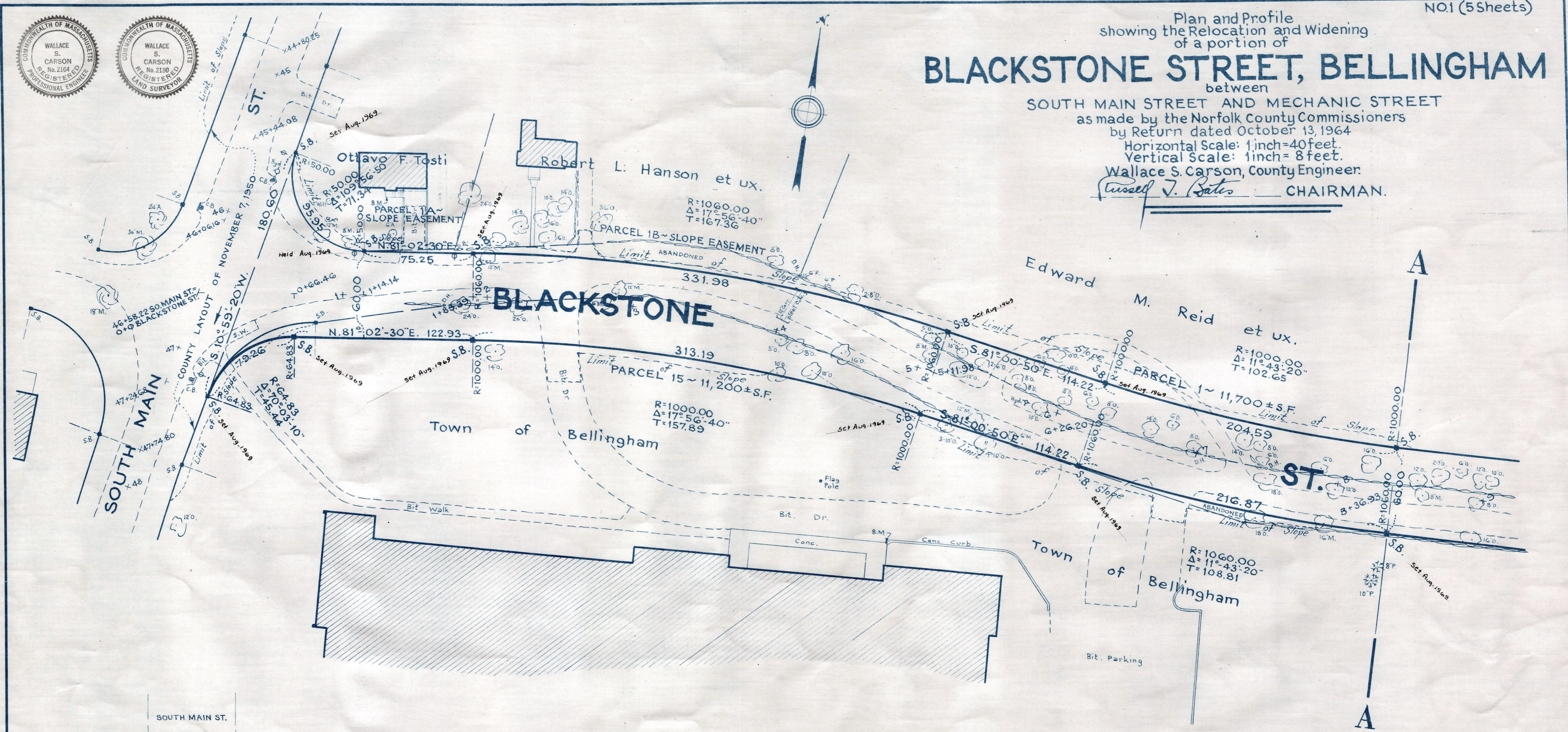
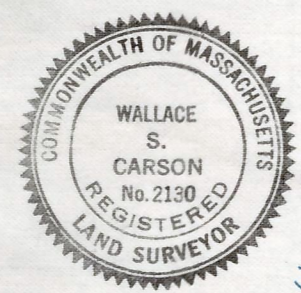
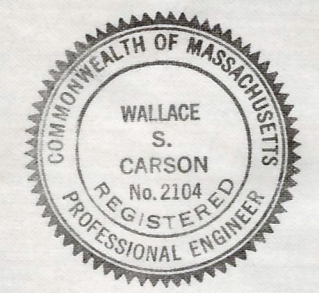


Plan and Profile
showing the Relocation and Widening
of a portion of
BLACKSTONE STREET, BELLINGHAM
between

SOUTH MAIN STREET AND MECHANIC STREET
as made by the Norfolk County Commissioners
by Return dated October 13, 1964
Horizontal Scale: 1 inch = 40 feet.
Vertical Scale: 1 inch = 8 feet.
Wallace S. Carson, County Engineer.
Fussell J. Bates CHAIRMAN.



Date of Entry Nov. 2, 1964
REC. IN REGISTRY 4207-560 ~ 10-27-64
PL. BK. 217 NO. 1011-1015 INCL. WITH TKG.