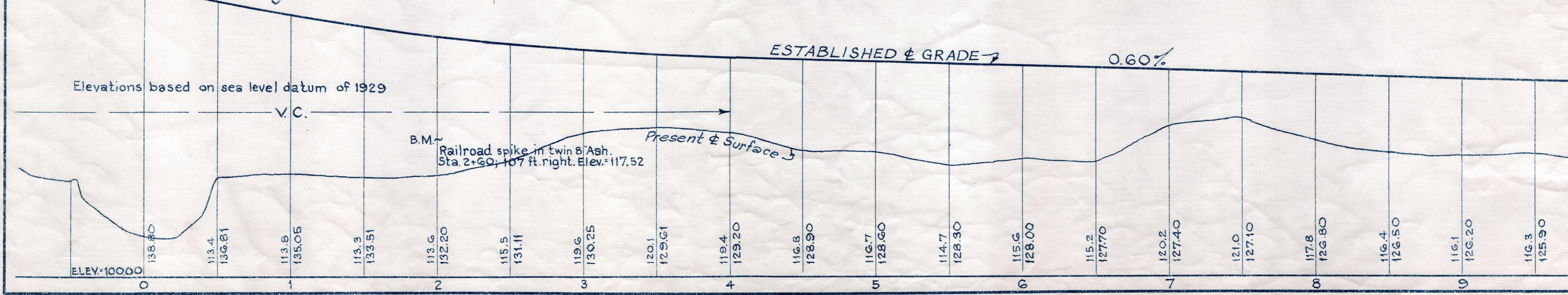
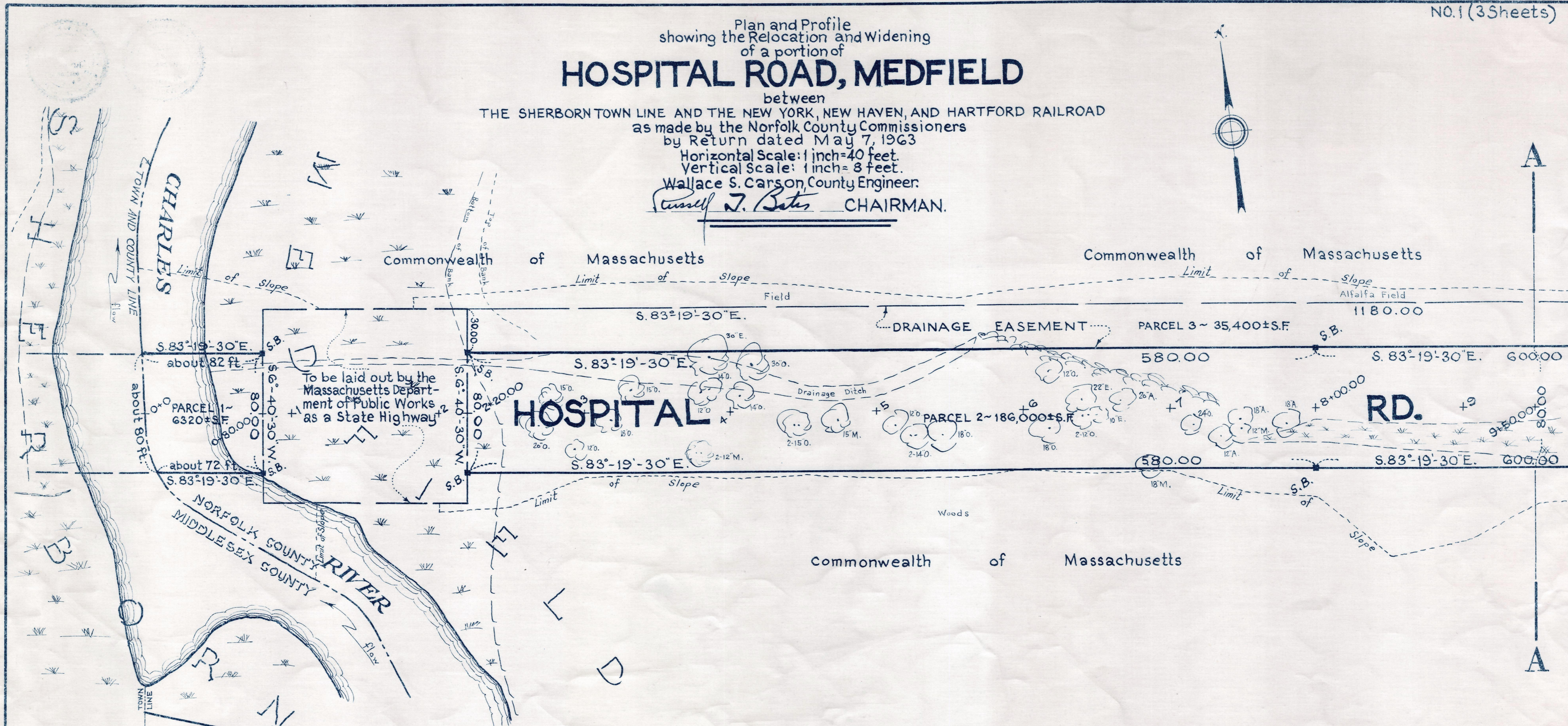


Plan and Profile
showing the Relocation and Widening
of a portion of
HOSPITAL ROAD, MEDFIELD

between
THE SHERBORN TOWN LINE AND THE NEW YORK, NEW HAVEN, AND HARTFORD RAILROAD
as made by the Norfolk County Commissioners
by Return dated May 7, 1963
Horizontal Scale: 1 inch = 40 feet.
Vertical Scale: 1 inch = 8 feet.
Wallace S. Carson, County Engineer.
Wallace S. Carson CHAIRMAN.



510-1