

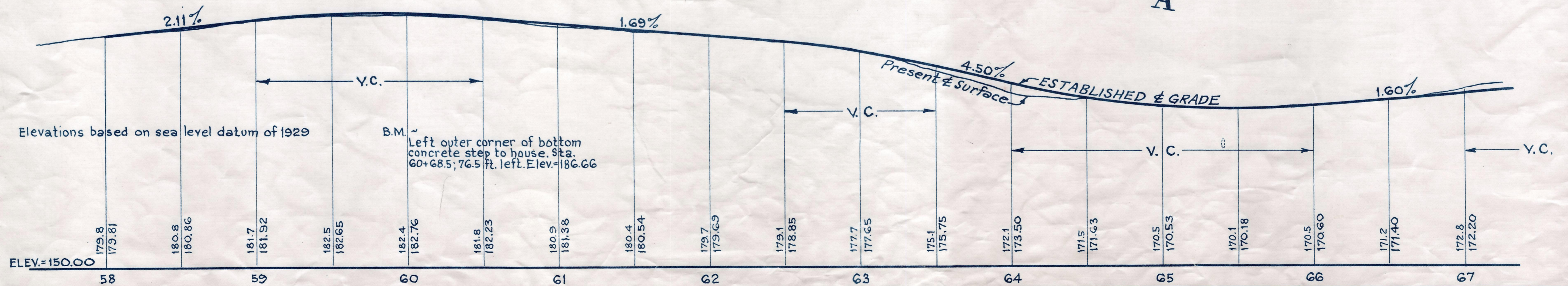
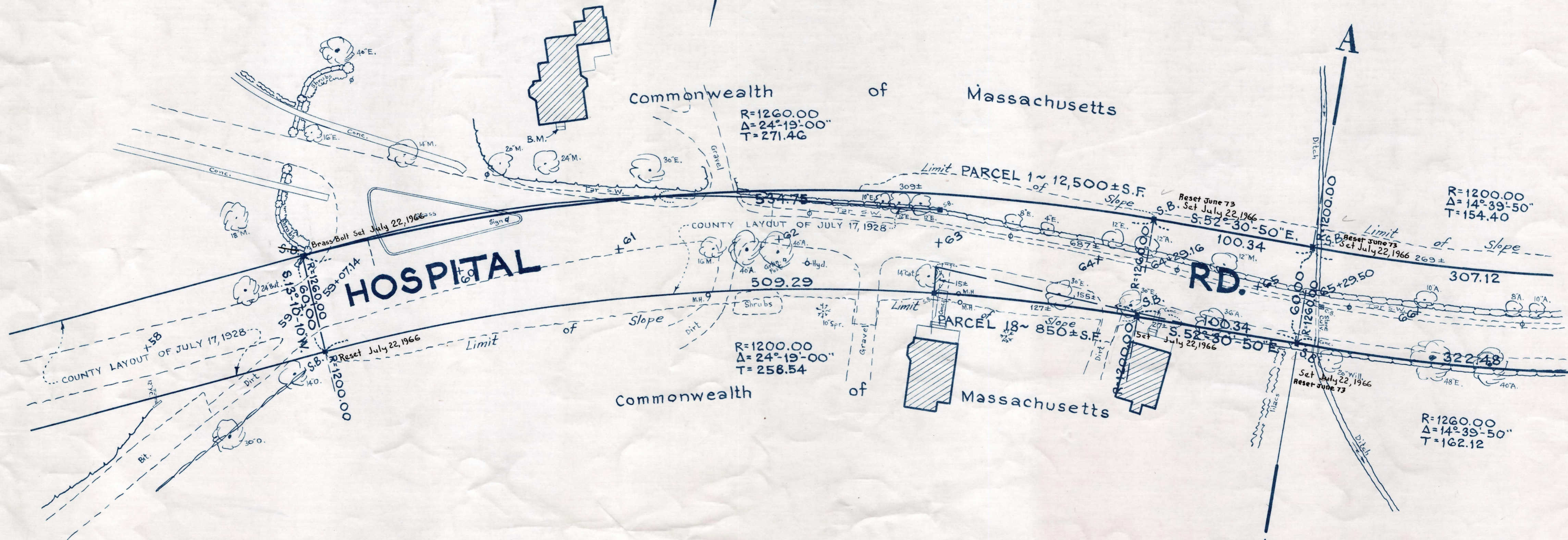
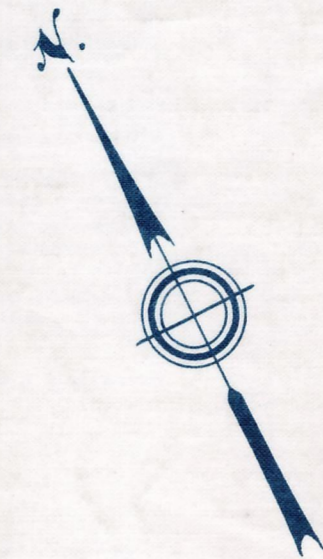
Plan and Profile showing the Relocation and Widening of a portion of **HOSPITAL ROAD, MEDFIELD**

between
THE ENTRANCE TO THE MEDFIELD STATE HOSPITAL AND HARDING ST.
as made by the Norfolk County Commissioners
by Return dated March 17, 1964

Horizontal Scale: 1 inch = 40 feet.
Vertical Scale: 1 inch = 8 feet.

Wallace S. Carson, County Engineer.

Cussell J. Bates CHAIRMAN.



REC. IN REGISTRY 4151-360 4-2-1964 509-1
PL. BK. NO. 215 NO. 542-544 INCL. 5-15-63
216 331-333
Date of Entry ~ April 14, 1964