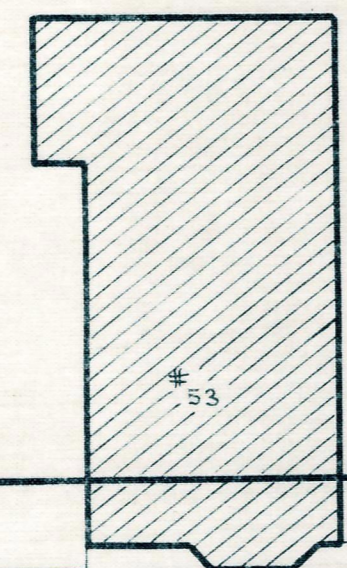


B



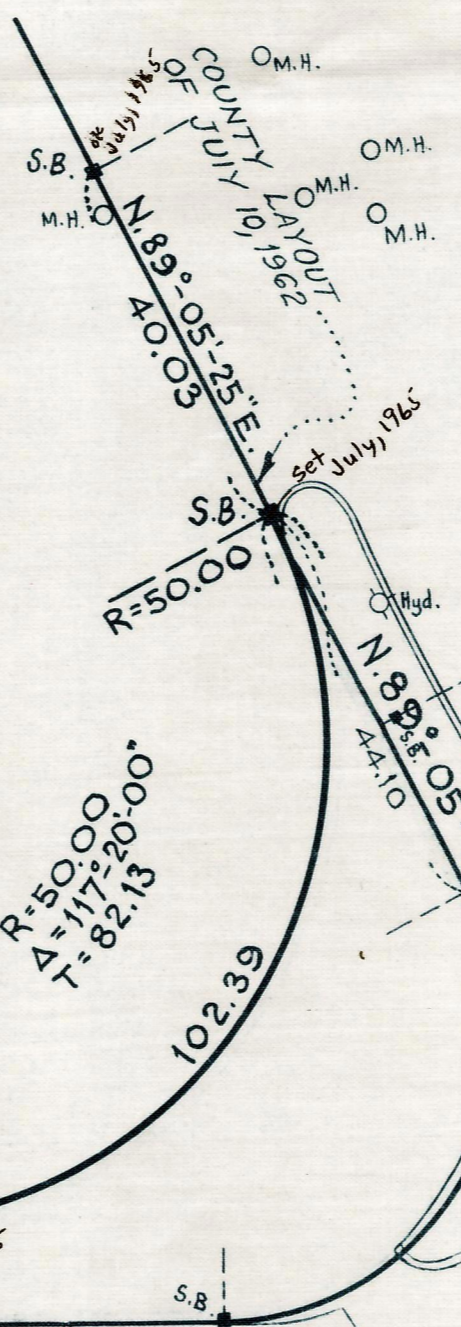
Brookline Redevelopment Authority



12,586 S.F.

N. 26°-25'-25" E.

416.48



WASHINGTON

POND

50.00

N. 26°-25'-25" E.

AVE.

524.45

Town of Brookline (Riverdale)

ST.

B

0.63%

ESTABLISHED & GRADE
Present & Surface

0.83%

2.80%

WASHINGTON ST.

