

Plan and Profile showing the Relocation and Widening of a portion of **POND AVENUE, BROOKLINE**

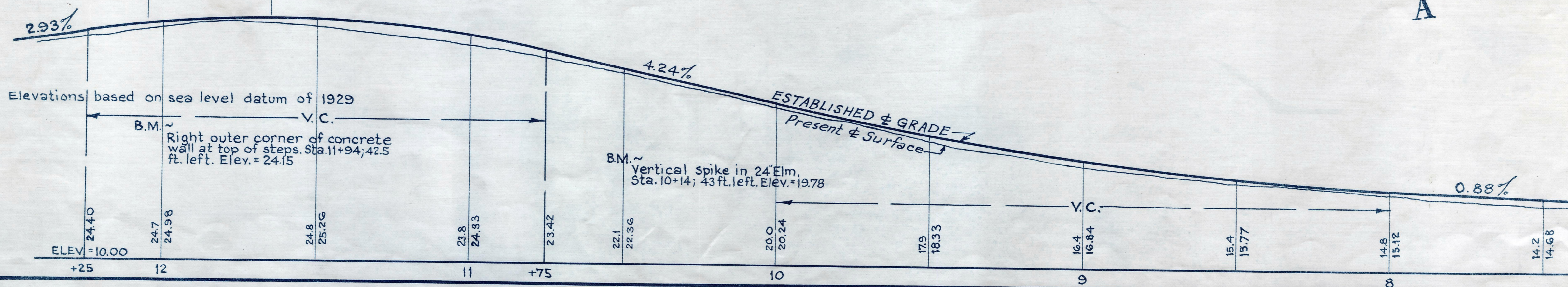
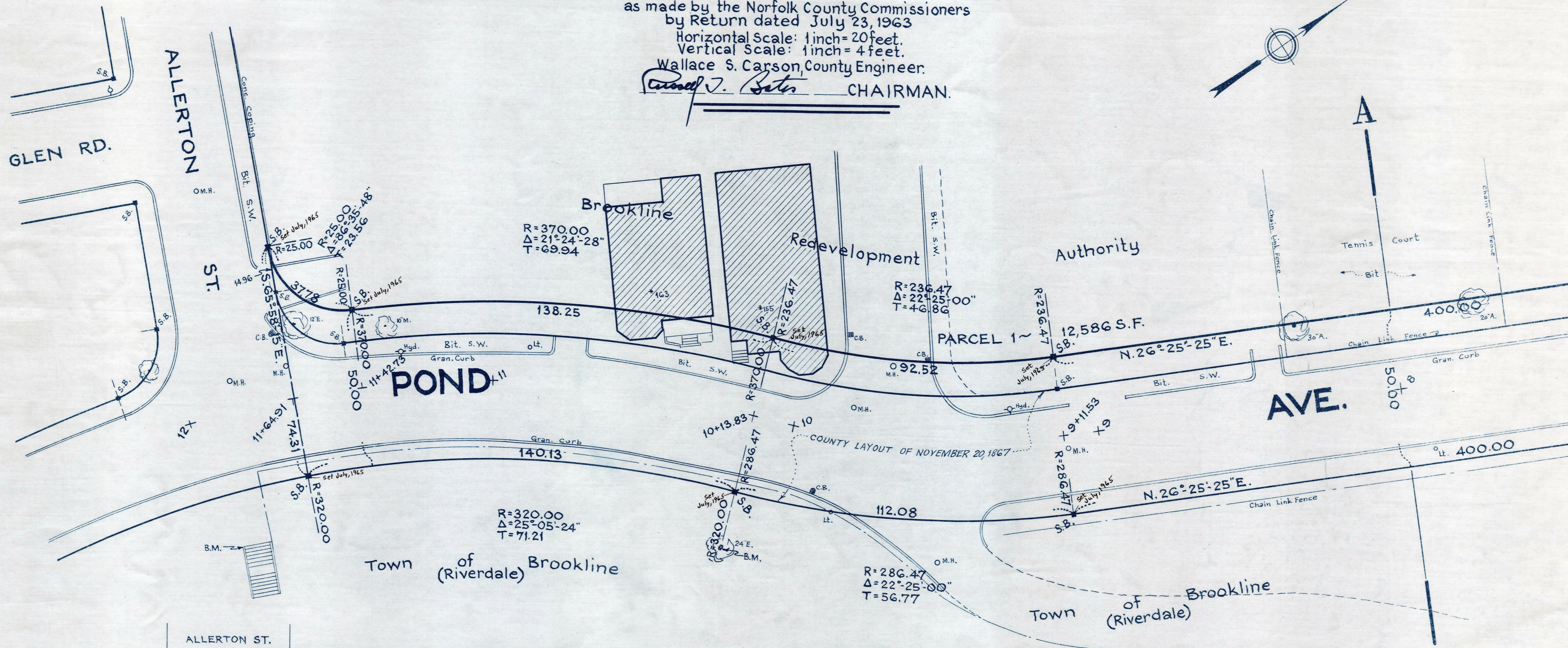
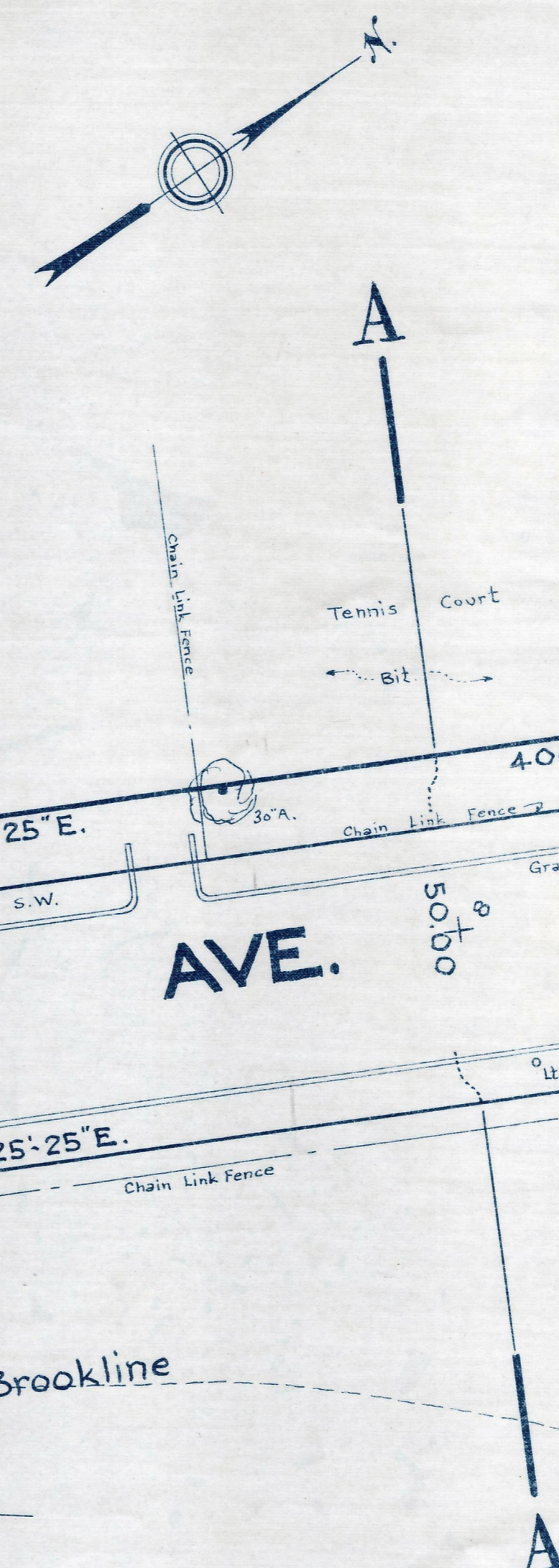
between
ALLERTON STREET AND WASHINGTON STREET

as made by the Norfolk County Commissioners
by Return dated July 23, 1963

Horizontal Scale: 1 inch = 20 feet.
Vertical Scale: 1 inch = 4 feet.

Wallace S. Carson, County Engineer.

Edward J. Bates CHAIRMAN.



Date of Entry June 1, 1965.

REC. IN REGISTRY 4095 - 501 ~ 8-14-63
PL. BK. 215 NO. 878 - 880 INCL.

505-1