

Plan and Profile
showing the Relocation and Widening
of a portion of
GEORGE STREET, PLAINVILLE

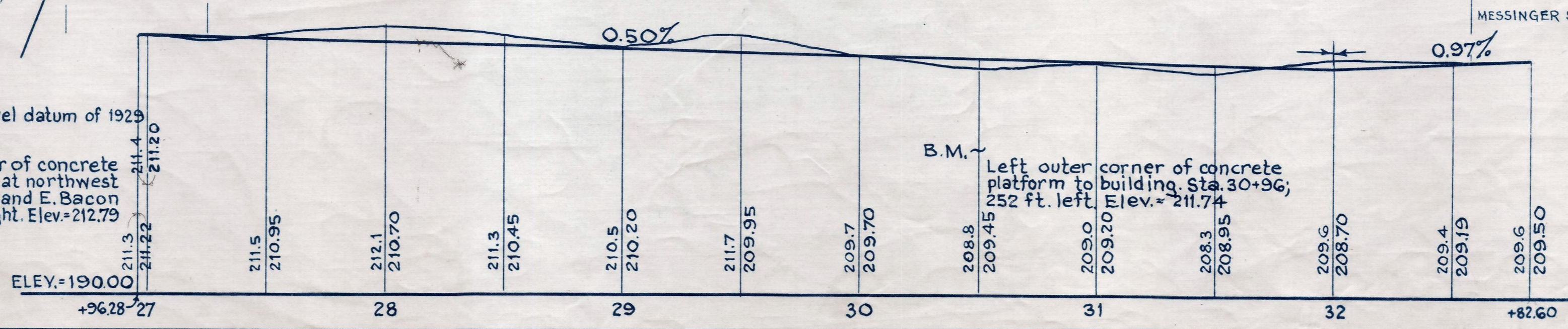
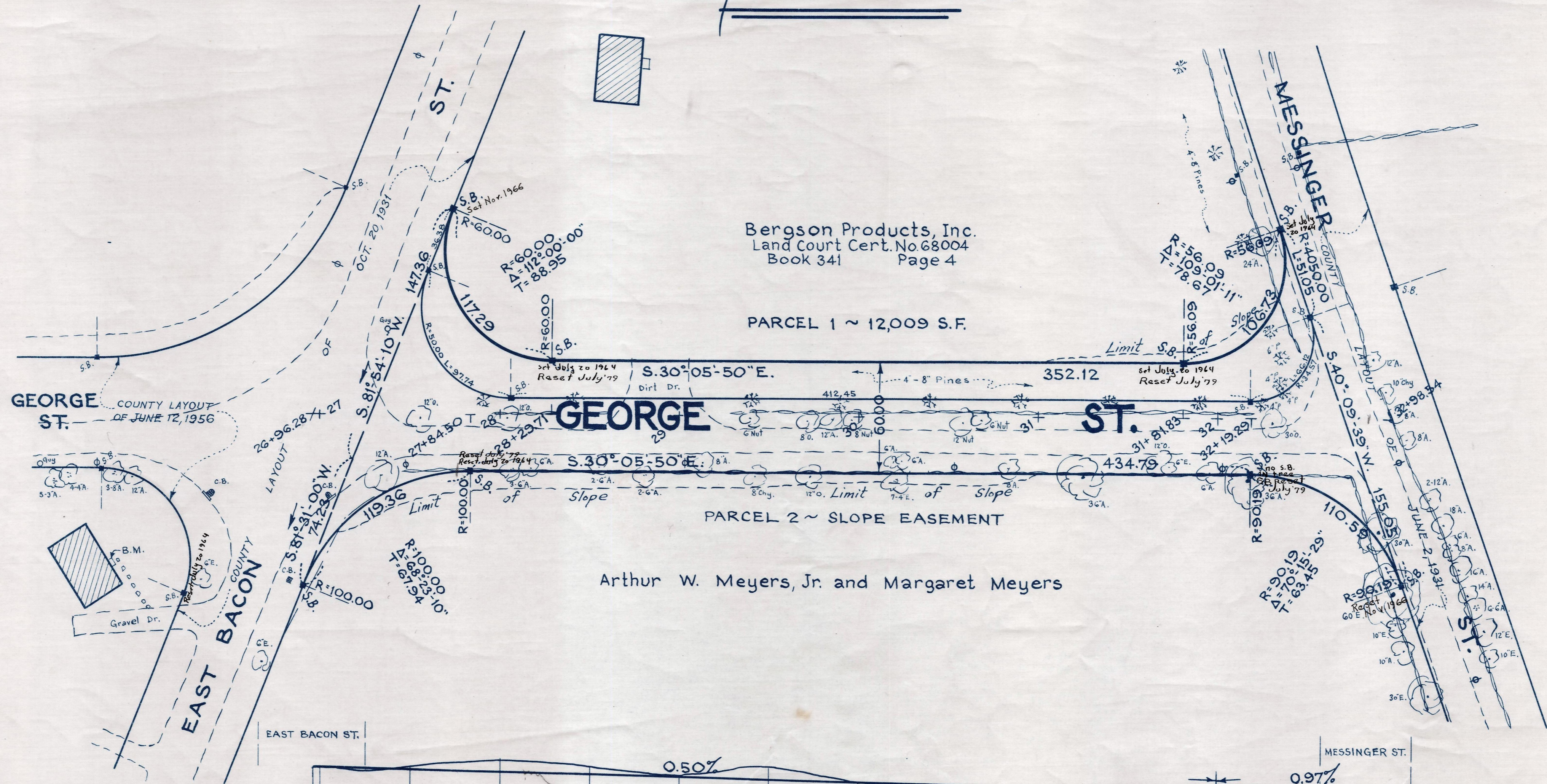
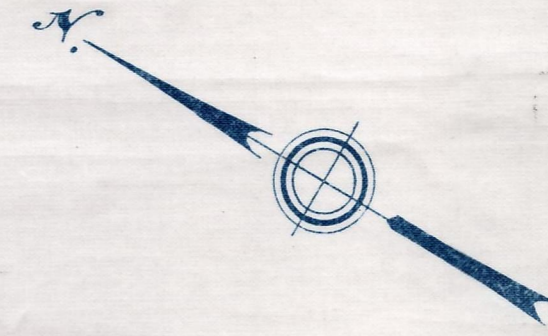
between
EAST BACON ST. AND MESSINGER ST.

as made by the Norfolk County Commissioners
by Return dated March 5, 1963

Horizontal Scale: 1 inch = 40 feet.
Vertical Scale: 1 inch = 8 feet.

Wallace S. Carson, County Engineer.

Russell J. Bates CHAIRMAN.



Elevations based on sea level datum of 1929
B.M. ~
Right outer corner of concrete platform to house at northwest corner of George St. and E. Bacon St. Sta. 25+83; 79 ft. right. Elev. = 212.79

B.M. ~
Left outer corner of concrete platform to building. Sta. 30+96; 252 ft. left. Elev. = 211.74